

Data Path : Z:\pestpcbsrv\HPCHEM1\FID_C\Data\FC051221AL\
 Data File : FC053678.D
 Signal(s) : FID1A.CH
 Acq On : 13 May 2021 1:16
 Operator : DD\AJ
 Sample : I.BLK
 Misc :
 ALS Vial : 1 Sample Multiplier: 1

Integration File: autoint1.e
 Quant Time: May 13 02:16:31 2021
 Quant Method : Z:\pestpcbsrv\HPCHEM1\FID_C\Method\Alaphatic EPH 050321.M
 Quant Title : GC Extractables
 QLast Update : Tue May 04 11:44:19 2021
 Response via : Initial Calibration
 Integrator: ChemStation 6890 Scale Mode: Large solvent peaks clipped

Volume Inj. : 1 ul
 Signal Phase : Rxi-1ms
 Signal Info : 20M x 0.18mm x 0.18um

Compound	R.T.	Response	Conc Units

System Monitoring Compounds			
Target Compounds			
13) T n-Docosane (C22)	13.680f	92966	0.699 ug/ml
14) T n-Tetracosane (C24)	14.831	128725	0.964 ug/ml
15) T n-Hexacosane (C26)	15.854	148678	1.125 ug/ml
16) T n-Octacosane (C28)	16.805	172793	1.320 ug/ml
17) T n-Tricontane (C30)	17.693	187618	1.438 ug/ml
18) T n-Dotriacontane (C32)	18.527	194529	1.542 ug/ml
19) T n-Tetratriacontane (C34)	19.311	117794	0.967 ug/ml
20) T n-Hexatriacontane (C36)	20.054	576094	4.927 ug/ml

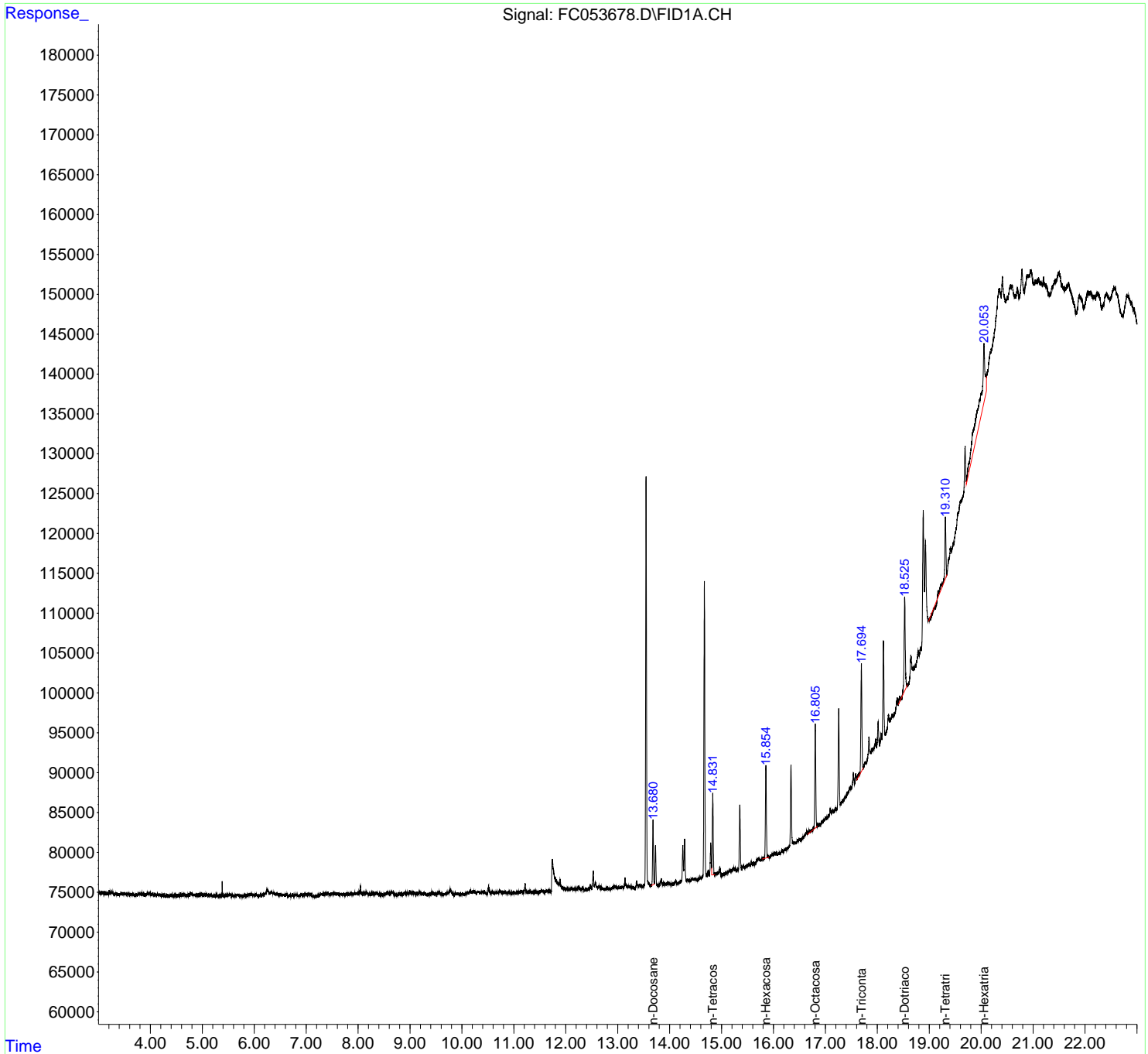
(f)=RT Delta > 1/2 Window

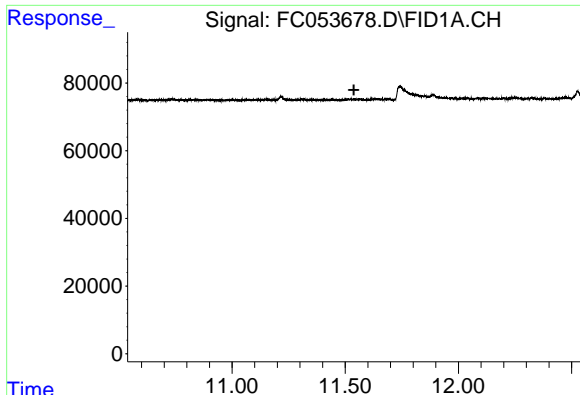
(m)=manual int.

Data Path : Z:\pestpcbsrv\HPCHEM1\FID_C\Data\FC051221AL\
 Data File : FC053678.D
 Signal(s) : FID1A.CH
 Acq On : 13 May 2021 1:16
 Operator : DD\AJ
 Sample : I.BLK
 Misc :
 ALS Vial : 1 Sample Multiplier: 1

Integration File: autoint1.e
 Quant Time: May 13 02:16:31 2021
 Quant Method : Z:\pestpcbsrv\HPCHEM1\FID_C\Method\Alaphatic EPH 050321.M
 Quant Title : GC Extractables
 QLast Update : Tue May 04 11:44:19 2021
 Response via : Initial Calibration
 Integrator: ChemStation 6890 Scale Mode: Large solvent peaks clipped

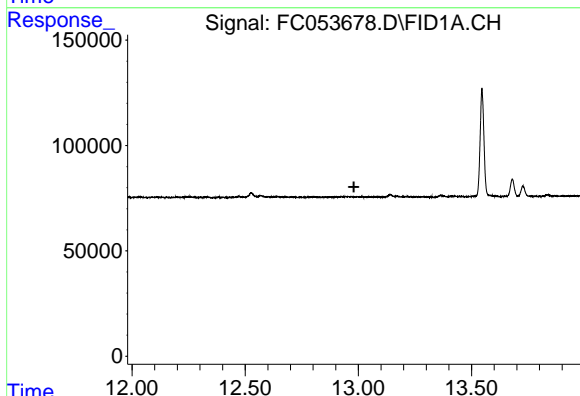
Volume Inj. : 1 ul
 Signal Phase : Rxi-1ms
 Signal Info : 20M x 0.18mm x 0.18um





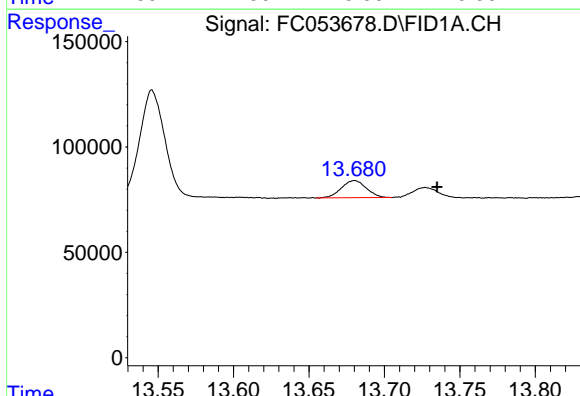
#9 ortho-Terphenyl (SURR)

R.T.: 0.000 min
 Exp R.T. : 11.538 min
 Response: 0
 Conc: N.D.



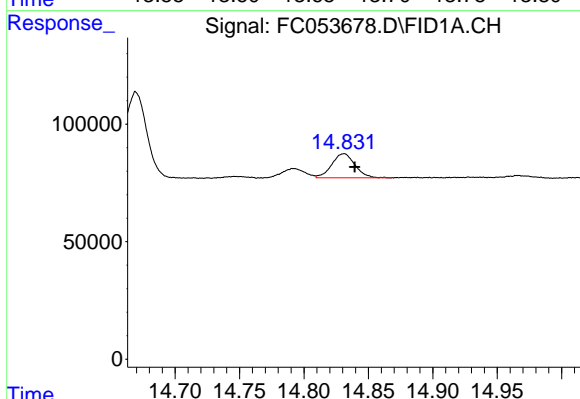
#12 1-chlorooctadecane (SURR)

R.T.: 0.000 min
 Exp R.T. : 12.980 min
 Response: 0
 Conc: N.D.



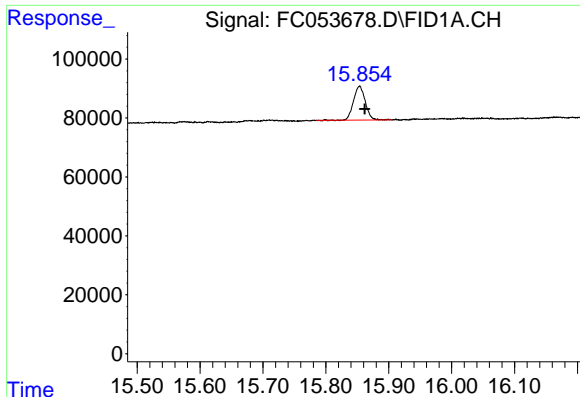
#13 n-Docosane (C22)

R.T.: 13.680 min
 Delta R.T.: -0.055 min
 Response: 92966
 Conc: 0.70 ug/ml



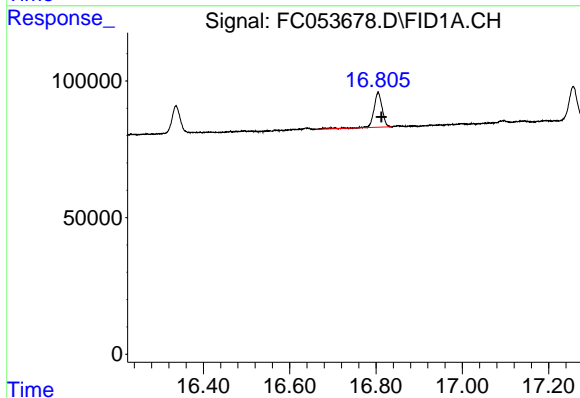
#14 n-Tetracosane (C24)

R.T.: 14.831 min
 Delta R.T.: -0.009 min
 Response: 128725
 Conc: 0.96 ug/ml



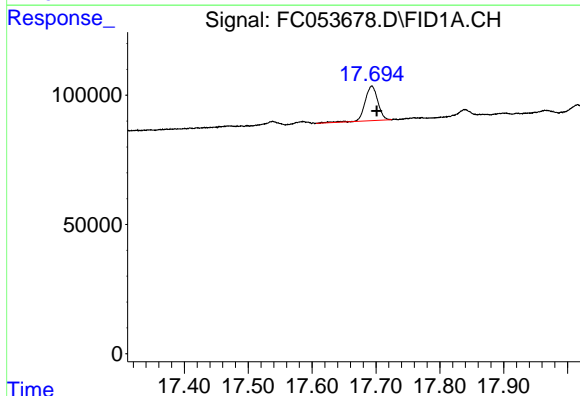
#15 n-Hexacosane (C26)

R.T.: 15.854 min
Delta R.T.: -0.008 min
Response: 148678
Conc: 1.12 ug/ml



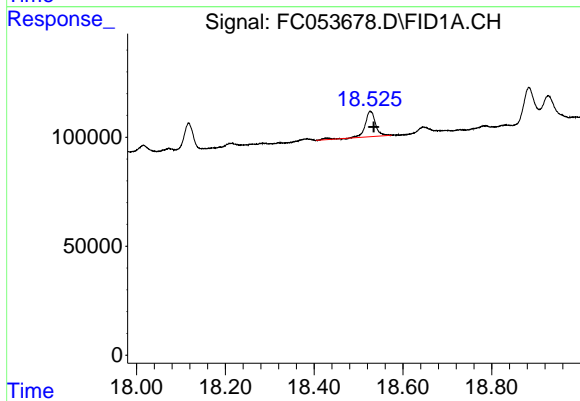
#16 n-Octacosane (C28)

R.T.: 16.805 min
Delta R.T.: -0.007 min
Response: 172793
Conc: 1.32 ug/ml



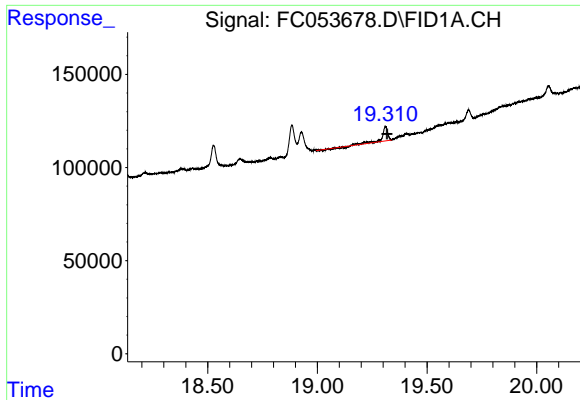
#17 n-Tricontane (C30)

R.T.: 17.693 min
Delta R.T.: -0.008 min
Response: 187618
Conc: 1.44 ug/ml



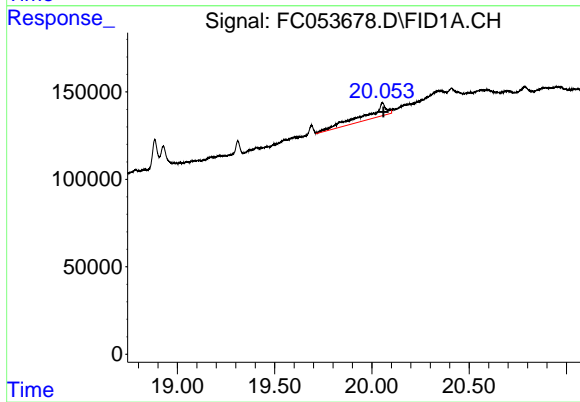
#18 n-Dotriacontane (C32)

R.T.: 18.527 min
Delta R.T.: -0.008 min
Response: 194529
Conc: 1.54 ug/ml



#19 n-Tetratriacontane (C34)

R.T.: 19.311 min
Delta R.T.: -0.007 min
Response: 117794
Conc: 0.97 ug/ml



#20 n-Hexatriacontane (C36)

R.T.: 20.054 min
Delta R.T.: -0.005 min
Response: 576094
Conc: 4.93 ug/ml