

Data Path : Z:\pestpcbsrv\HPCHEM1\FID_C\Data\FC051420AL\
 Data File : FC047447.D
 Signal(s) : FID1A.CH
 Acq On : 15 May 2020 1:25
 Operator : DD\AJ
 Sample : 20 PPM ALIPHATIC HC STD
 Misc :
 ALS Vial : 2 Sample Multiplier: 1

Instrument :
 FID_C
 ClientSampled :

Integration File: autoint1.e
 Quant Time: May 15 07:22:47 2020
 Quant Method : Z:\pestpcbsrv\HPCHEM1\FID_C\Method\Alaphatic EPH 050820.M
 Quant Title : GC Extractables
 QLast Update : Fri May 08 16:49:27 2020
 Response via : Initial Calibration
 Integrator: ChemStation 6890 Scale Mode: Large solvent peaks clipped

Volume Inj. : 1 ul
 Signal Phase : Rxi-1ms
 Signal Info : 20M x 0.18mm x 0.18um

Compound	R.T.	Response	Conc Units

System Monitoring Compounds			
9) S ortho-Terphenyl (SURR)	11.744	2489825	20.828 ug/ml
Spiked Amount	50.000	Recovery =	41.66%
12) S 1-chlorooctadecane (S...	13.157	2001064	20.402 ug/ml
Spiked Amount	50.000	Recovery =	40.80%
Target Compounds			
1) T n-Nonane (C9)	3.549	2302615	22.713 ug/ml
2) T n-Decane (C10)	4.613	2364216	23.136 ug/ml
3) T A~Naphthalene (C11.7)	6.210	2341580	22.487 ug/ml
4) T n-Dodecane (C12)	6.613	2420184	22.913 ug/ml
5) T A~2-methylnaphthalene...	7.258	2353128	22.408 ug/ml
6) T n-Tetradecane (C14)	8.392	2400670	22.696 ug/ml
7) T n-Hexadecane (C16)	9.980	2328849	22.010 ug/ml
8) T n-Octadecane (C18)	11.411	2402874	21.459 ug/ml
10) T n-Eicosane (C20)	12.711	2373874	20.862 ug/ml
11) T n-Heneicosane (C21)	13.319	2343318	20.612 ug/ml
13) T n-Docosane (C22)	13.900	2326030	20.469 ug/ml
14) T n-Tetracosane (C24)	14.996	2253900	19.920 ug/ml
15) T n-Hexacosane (C26)	16.012	2191603	19.567 ug/ml
16) T n-Octacosane (C28)	16.955	2150881	19.284 ug/ml
17) T n-Tricontane (C30)	17.839	2097664	19.401 ug/ml
18) T n-Dotriacontane (C32)	18.665	1938681	19.659 ug/ml
19) T n-Tetratriacontane (C34)	19.444	1822749	19.872 ug/ml
20) T n-Hexatriacontane (C36)	20.178	1768723	20.395 ug/ml
21) T n-Octatriacontane (C38)	20.932	1699713	21.065 ug/ml
22) T n-Tetracontane (C40)	21.880	1784974	21.950 ug/ml

(f)=RT Delta > 1/2 Window

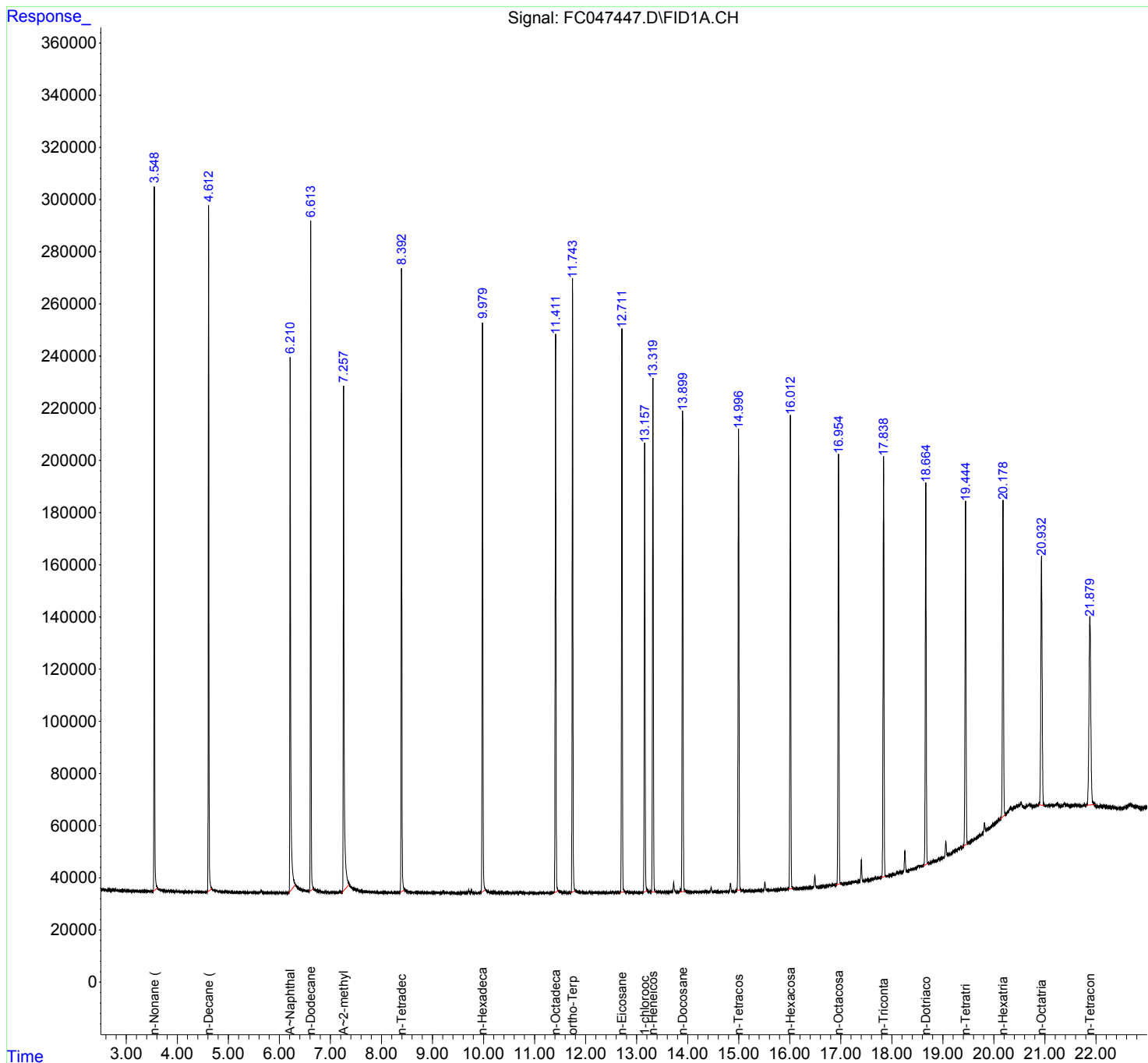
(m)=manual int.

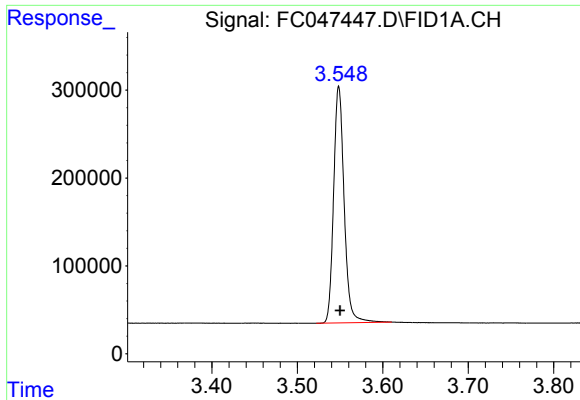
Data Path : Z:\pestpcbsrv\HPCHEM1\FID_C\Data\FC051420AL\
 Data File : FC047447.D
 Signal(s) : FID1A.CH
 Acq On : 15 May 2020 1:25
 Operator : DD\AJ
 Sample : 20 PPM ALIPHATIC HC STD
 Misc :
 ALS Vial : 2 Sample Multiplier: 1

Instrument :
 FID_C
 ClientSampled :

Integration File: autoint1.e
 Quant Time: May 15 07:22:47 2020
 Quant Method : Z:\pestpcbsrv\HPCHEM1\FID_C\Method\Aliphatic EPH 050820.M
 Quant Title : GC Extractables
 QLast Update : Fri May 08 16:49:27 2020
 Response via : Initial Calibration
 Integrator: ChemStation 6890 Scale Mode: Large solvent peaks clipped

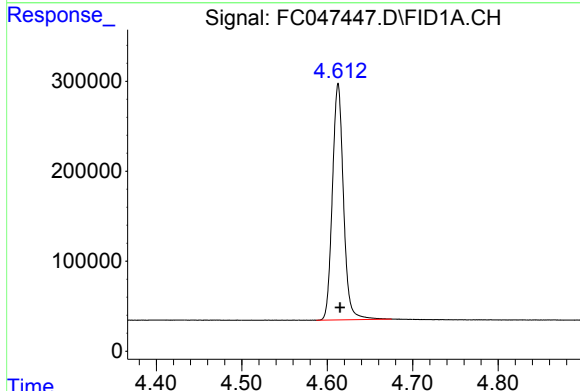
Volume Inj. : 1 ul
 Signal Phase : Rxi-1ms
 Signal Info : 20M x 0.18mm x 0.18um



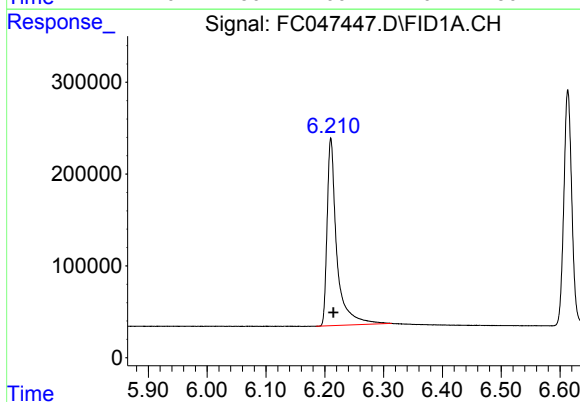


#1 n-Nonane (C9)
 R.T.: 3.549 min
 Delta R.T.: -0.001 min
 Response: 2302615
 Conc: 22.71 ug/ml

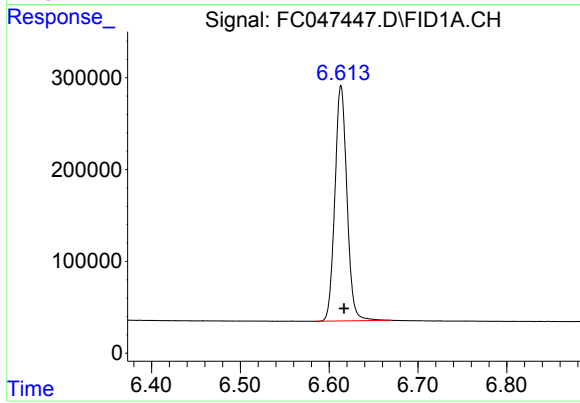
Instrument :
 FID_C
 ClientSampled :



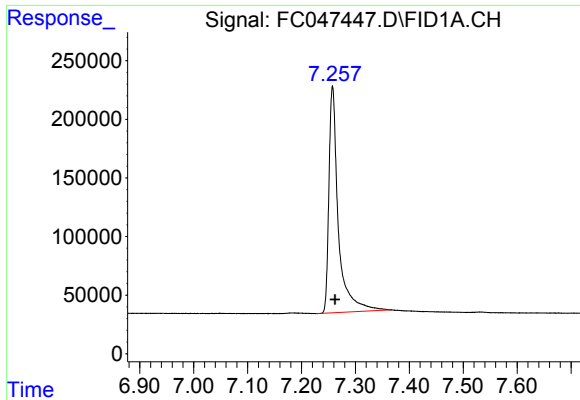
#2 n-Decane (C10)
 R.T.: 4.613 min
 Delta R.T.: -0.002 min
 Response: 2364216
 Conc: 23.14 ug/ml



#3 A~Naphthalene (C11.7)
 R.T.: 6.210 min
 Delta R.T.: -0.004 min
 Response: 2341580
 Conc: 22.49 ug/ml



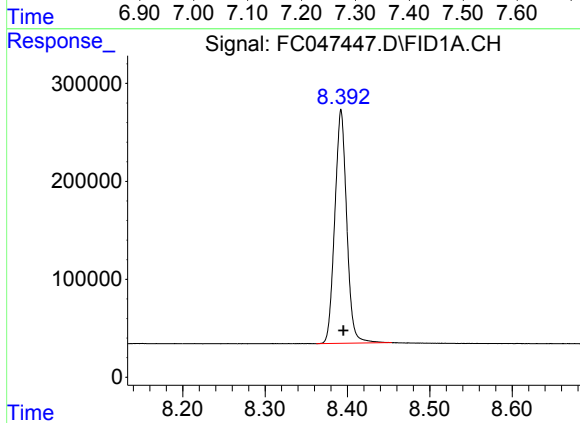
#4 n-Dodecane (C12)
 R.T.: 6.613 min
 Delta R.T.: -0.003 min
 Response: 2420184
 Conc: 22.91 ug/ml



#5 A~2-methylnaphthalene (C12.89)

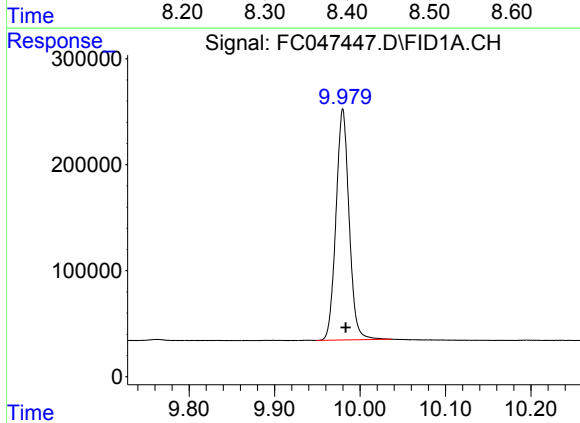
R.T.: 7.258 min
 Delta R.T.: -0.005 min
 Response: 2353128
 Conc: 22.41 ug/ml

Instrument :
 FID_C
 ClientSampleId :



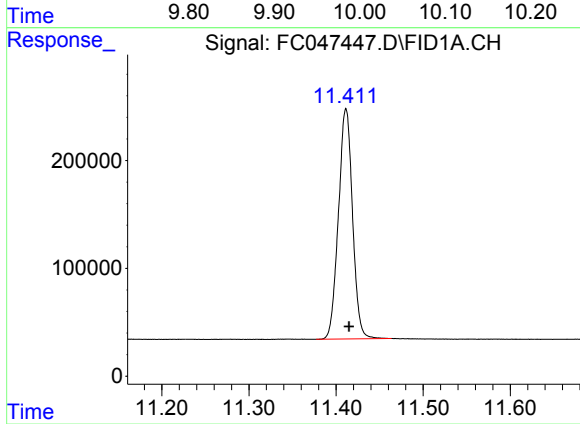
#6 n-Tetradecane (C14)

R.T.: 8.392 min
 Delta R.T.: -0.003 min
 Response: 2400670
 Conc: 22.70 ug/ml



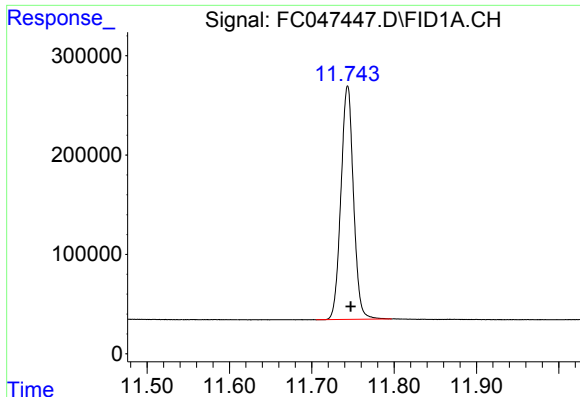
#7 n-Hexadecane (C16)

R.T.: 9.980 min
 Delta R.T.: -0.004 min
 Response: 2328849
 Conc: 22.01 ug/ml



#8 n-Octadecane (C18)

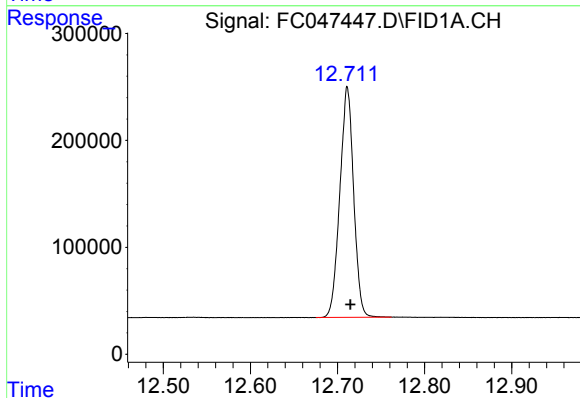
R.T.: 11.411 min
 Delta R.T.: -0.004 min
 Response: 2402874
 Conc: 21.46 ug/ml



#9 ortho-Terphenyl (SURR)

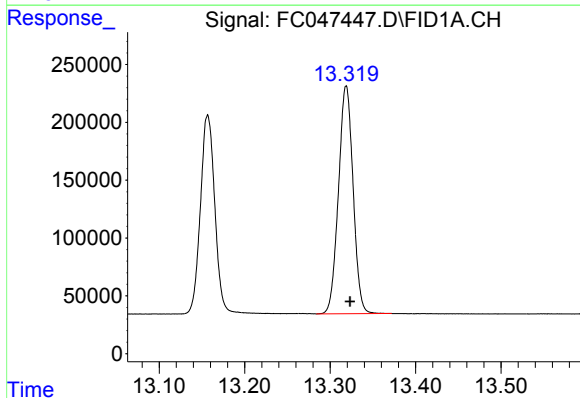
R.T.: 11.744 min
 Delta R.T.: -0.004 min
 Response: 2489825
 Conc: 20.83 ug/ml

Instrument :
 FID_C
 ClientSampled :



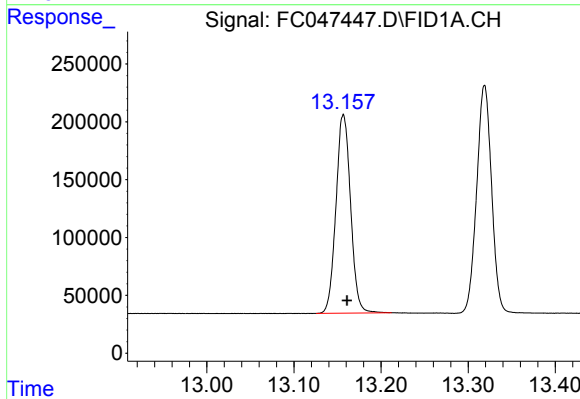
#10 n-Eicosane (C20)

R.T.: 12.711 min
 Delta R.T.: -0.004 min
 Response: 2373874
 Conc: 20.86 ug/ml



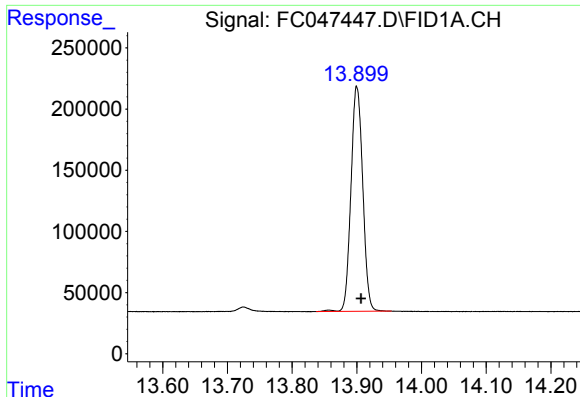
#11 n-Heneicosane (C21)

R.T.: 13.319 min
 Delta R.T.: -0.005 min
 Response: 2343318
 Conc: 20.61 ug/ml



#12 1-chlorooctadecane (SURR)

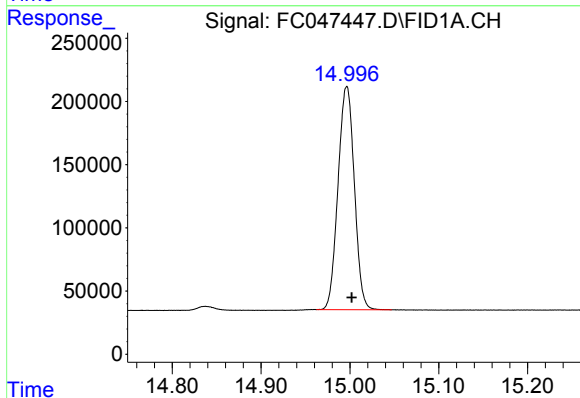
R.T.: 13.157 min
 Delta R.T.: -0.004 min
 Response: 2001064
 Conc: 20.40 ug/ml



#13 n-Docosane (C22)

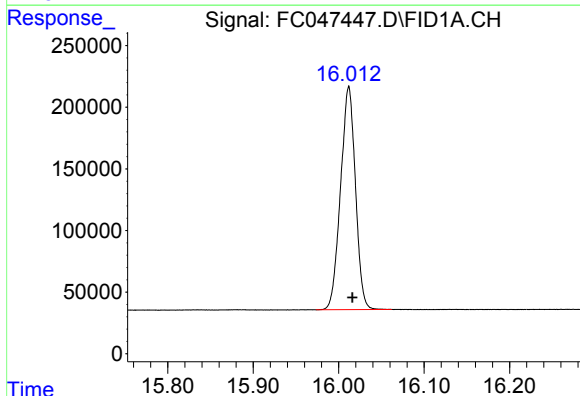
R.T.: 13.900 min
 Delta R.T.: -0.006 min
 Response: 2326030
 Conc: 20.47 ug/ml

Instrument :
 FID_C
 ClientSampled :



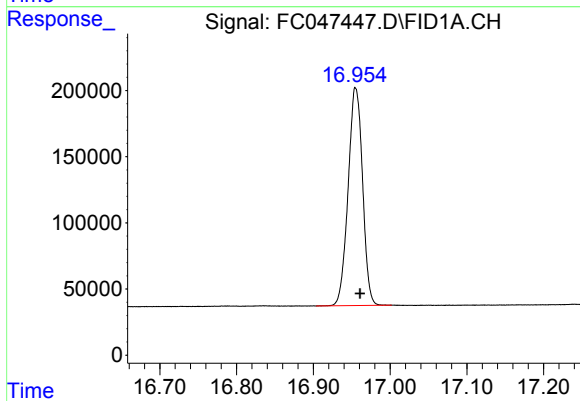
#14 n-Tetracosane (C24)

R.T.: 14.996 min
 Delta R.T.: -0.006 min
 Response: 2253900
 Conc: 19.92 ug/ml



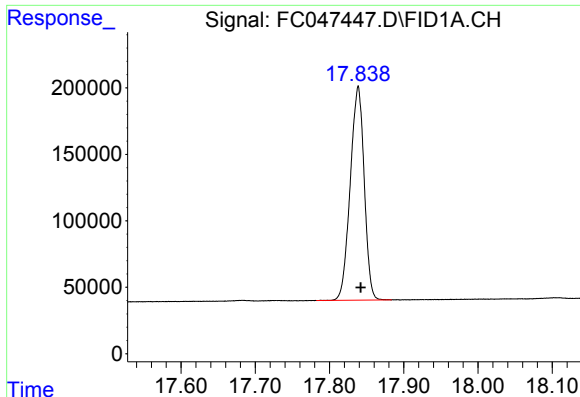
#15 n-Hexacosane (C26)

R.T.: 16.012 min
 Delta R.T.: -0.004 min
 Response: 2191603
 Conc: 19.57 ug/ml



#16 n-Octacosane (C28)

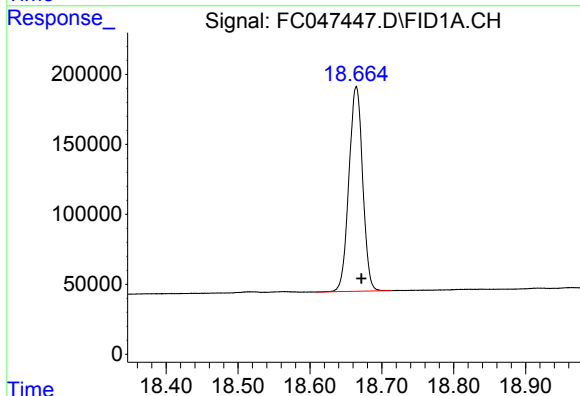
R.T.: 16.955 min
 Delta R.T.: -0.006 min
 Response: 2150881
 Conc: 19.28 ug/ml



#17 n-Tricontane (C30)

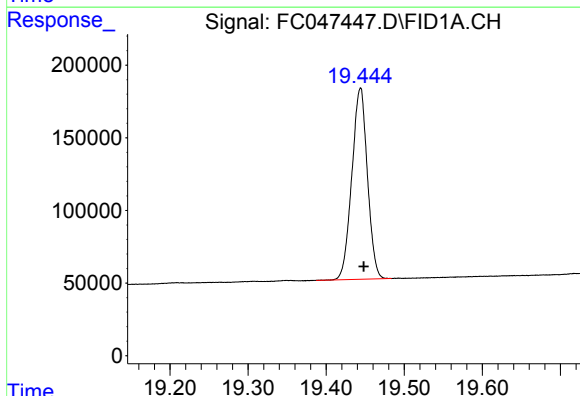
R.T.: 17.839 min
Delta R.T.: -0.003 min
Response: 2097664
Conc: 19.40 ug/ml

Instrument :
FID_C
ClientSampleId :



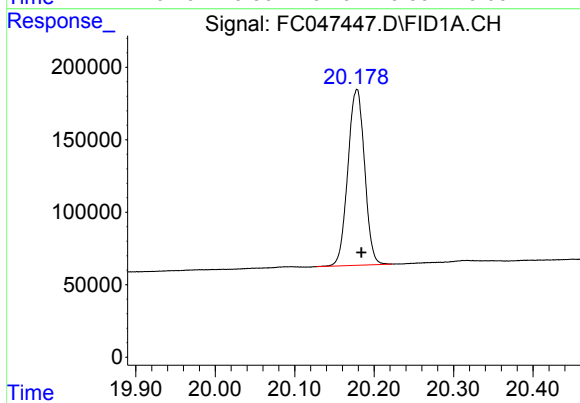
#18 n-Dotriacontane (C32)

R.T.: 18.665 min
Delta R.T.: -0.007 min
Response: 1938681
Conc: 19.66 ug/ml



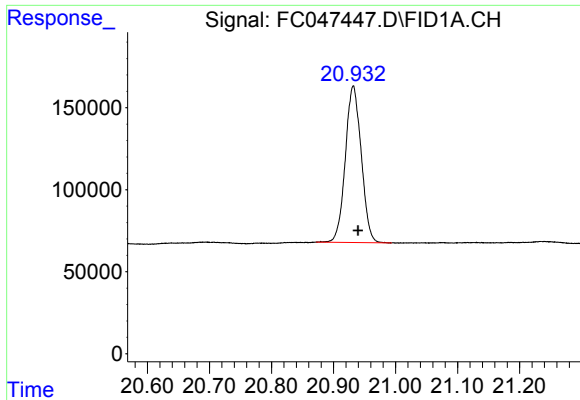
#19 n-Tetratriacontane (C34)

R.T.: 19.444 min
Delta R.T.: -0.004 min
Response: 1822749
Conc: 19.87 ug/ml



#20 n-Hexatriacontane (C36)

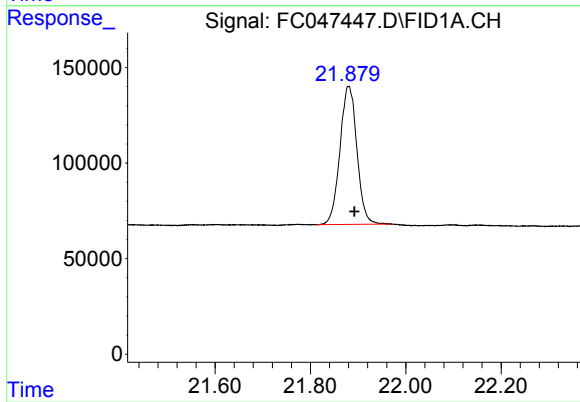
R.T.: 20.178 min
Delta R.T.: -0.006 min
Response: 1768723
Conc: 20.39 ug/ml



#21 n-Octatriacontane (C38)

R.T.: 20.932 min
Delta R.T.: -0.008 min
Response: 1699713
Conc: 21.07 ug/ml

Instrument :
FID_C
ClientSampleId :



#22 n-Tetracontane (C40)

R.T.: 21.880 min
Delta R.T.: -0.012 min
Response: 1784974
Conc: 21.95 ug/ml