

Data Path : P:\HPCHEM1\FID C\Data\FC051518AL\
 Data File : FC034012.D
 Signal(s) : FID1A.CH
 Acq On : 16 May 2018 2:01
 Operator : UA/AJ
 Sample : J2899-01
 Misc :
 ALS Vial : 18 Sample Multiplier: 1

Instrument :
 FID_C
 ClientSampleId :

Integration File: autoint1.e
 Quant Time: May 16 05:42:02 2018
 Quant Method : \\74.0.250.170\pestpcbsrv\HPCHEM1\FID_C\Method\Alaphatic EPH 042418.M
 Quant Title : GC Extractables
 QLast Update : Tue Apr 24 20:41:39 2018
 Response via : Initial Calibration
 Integrator: ChemStation 6890 Scale Mode: Large solvent peaks clipped

Volume Inj. : 1 ul
 Signal Phase : Rxi-lms
 Signal Info : 20M x 0.18mm x 0.18um

Compound	R.T.	Response	Conc Units

System Monitoring Compounds			
12) S 1-chlorooctadecane (S...	12.924	1503755	12.804 ug/ml
Spiked Amount 50.000		Recovery =	25.61%
Target Compounds			
19) T n-Tetratriacontane (C34)	19.101	269834	2.497 ug/ml
20) T n-Hexatriacontane (C36)	19.865	152787	1.526 ug/ml

(f)=RT Delta > 1/2 Window

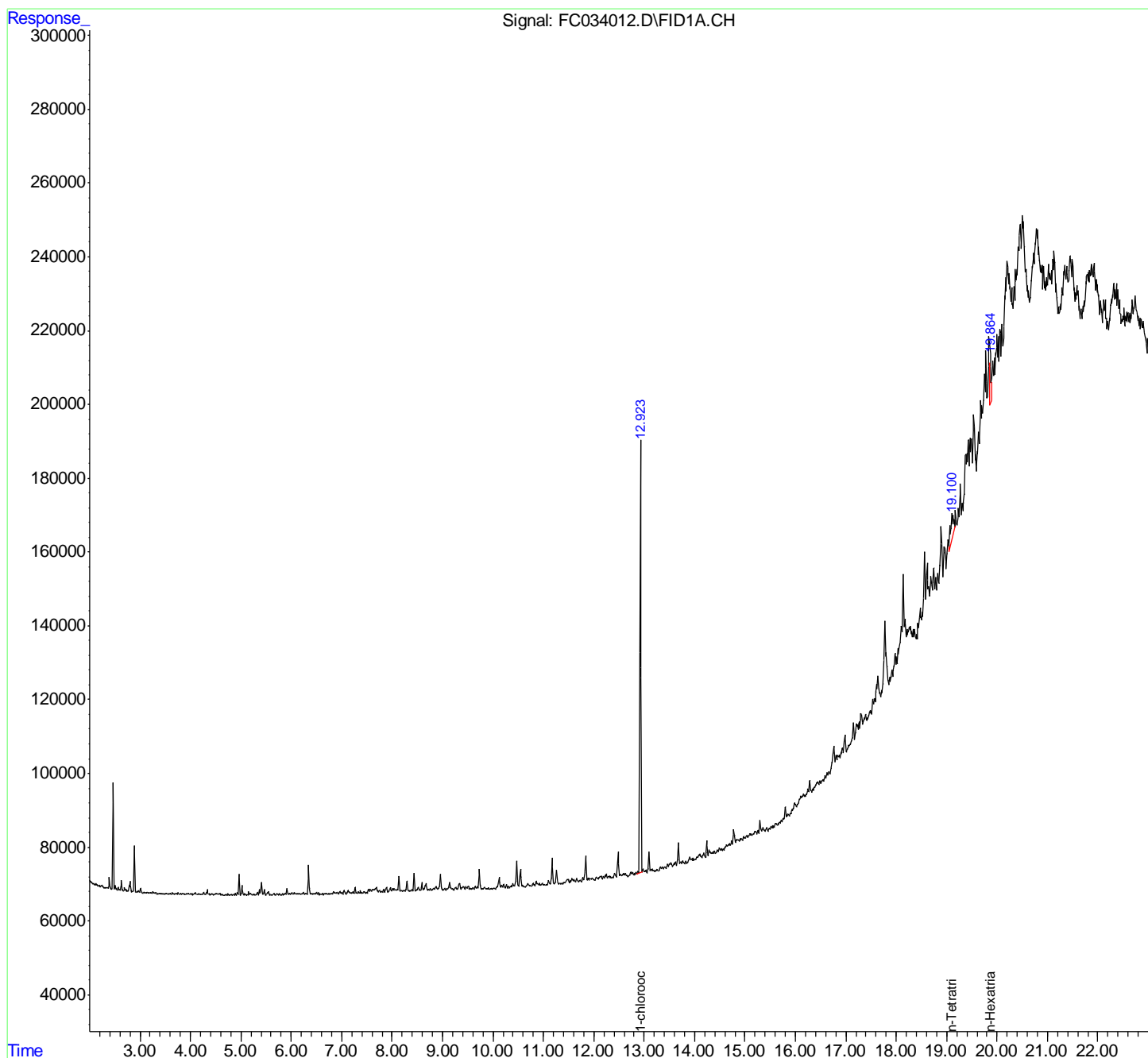
(m)=manual int.

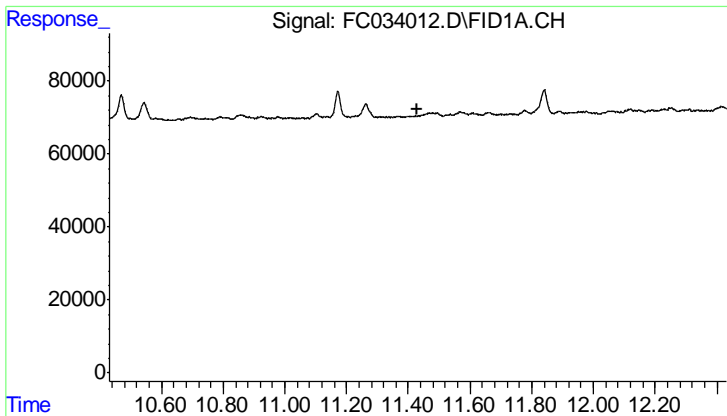
Data Path : P:\HPCHEM1\FID C\Data\FC051518AL\
 Data File : FC034012.D
 Signal(s) : FID1A.CH
 Acq On : 16 May 2018 2:01
 Operator : UA/AJ
 Sample : J2899-01
 Misc :
 ALS Vial : 18 Sample Multiplier: 1

Instrument :
 FID_C
 ClientSampled :

Integration File: autoint1.e
 Quant Time: May 16 05:42:02 2018
 Quant Method : \\74.0.250.170\pestpcbsrv\HPCHEM1\FID_C\Method\Alaphatic EPH 042418.M
 Quant Title : GC Extractables
 QLast Update : Tue Apr 24 20:41:39 2018
 Response via : Initial Calibration
 Integrator: ChemStation 6890 Scale Mode: Large solvent peaks clipped

Volume Inj. : 1 ul
 Signal Phase : Rxi-lms
 Signal Info : 20M x 0.18mm x 0.18um

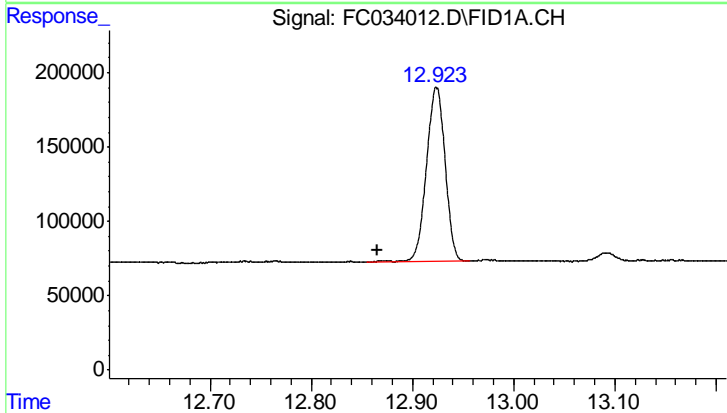




#9 ortho-Terphenyl (SURR)

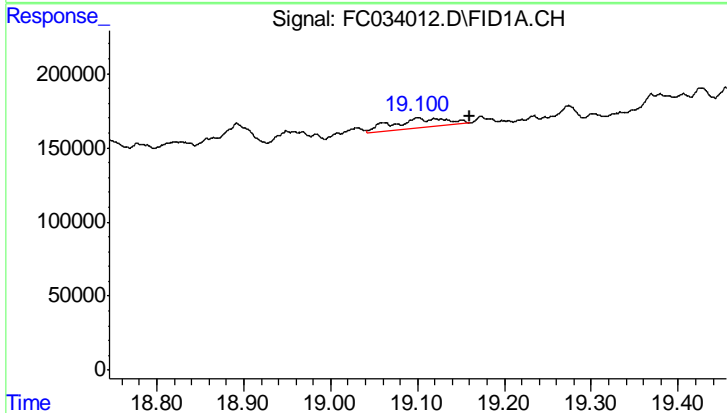
R.T.: 0.000 min
 Exp R.T.: 11.431 min
 Response: 0
 Conc: N.D.

Instrument :
 FID_C
 ClientSampled :



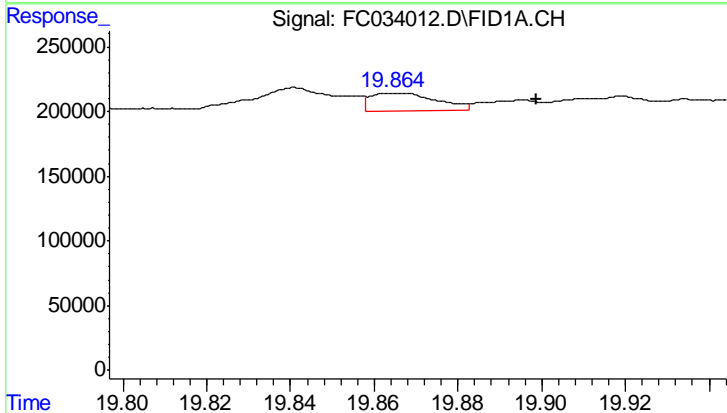
#12 1-chlorooctadecane (SURR)

R.T.: 12.924 min
 Delta R.T.: 0.059 min
 Response: 1503755
 Conc: 12.80 ug/ml



#19 n-Tetratriacontane (C34)

R.T.: 19.101 min
 Delta R.T.: -0.060 min
 Response: 269834
 Conc: 2.50 ug/ml



#20 n-Hexatriacontane (C36)

R.T.: 19.865 min
 Delta R.T.: -0.033 min
 Response: 152787
 Conc: 1.53 ug/ml