

Data Path : Z:\pestpcbsrv\HPCHEM1\FID_C\Data\FC051520AL\
 Data File : FC047457.D
 Signal(s) : FID1A.CH
 Acq On : 15 May 2020 9:30
 Operator : DD\AJ
 Sample : 20 PPM ALIPHATIC HC STD
 Misc :
 ALS Vial : 2 Sample Multiplier: 1

Instrument :
 FID_C
 ClientSampleId :
 20 PPM ALIPHATIC HC STD

Integration File: autoint1.e
 Quant Time: May 16 05:04:19 2020
 Quant Method : Z:\pestpcbsrv\HPCHEM1\FID_C\Method\Alaphatic EPH 050820.M
 Quant Title : GC Extractables
 QLast Update : Fri May 08 16:49:27 2020
 Response via : Initial Calibration
 Integrator: ChemStation 6890 Scale Mode: Large solvent peaks clipped

Volume Inj. : 1 ul
 Signal Phase : Rxi-1ms
 Signal Info : 20M x 0.18mm x 0.18um

Compound	R.T.	Response	Conc Units

System Monitoring Compounds			
9) S ortho-Terphenyl (SURR)	11.742	2107681	17.631 ug/ml
Spiked Amount	50.000	Recovery	= 35.26%
12) S 1-chlorooctadecane (S...	13.156	1686658	17.196 ug/ml
Spiked Amount	50.000	Recovery	= 34.39%
Target Compounds			
1) T n-Nonane (C9)	3.548	1958174	19.316 ug/ml
2) T n-Decane (C10)	4.612	1984213	19.417 ug/ml
3) T A~Naphthalene (C11.7)	6.211	1939050	18.622 ug/ml
4) T n-Dodecane (C12)	6.613	2044193	19.353 ug/ml
5) T A~2-methylnaphthalene...	7.258	1931002	18.388 ug/ml
6) T n-Tetradecane (C14)	8.391	2022045	19.117 ug/ml
7) T n-Hexadecane (C16)	9.979	1962402	18.547 ug/ml
8) T n-Octadecane (C18)	11.410	2029161	18.121 ug/ml
10) T n-Eicosane (C20)	12.710	2000469	17.581 ug/ml
11) T n-Heneicosane (C21)	13.317	1982131	17.435 ug/ml
13) T n-Docosane (C22)	13.899	1948003	17.142 ug/ml
14) T n-Tetracosane (C24)	14.995	1887650	16.683 ug/ml
15) T n-Hexacosane (C26)	16.009	1819555	16.245 ug/ml
16) T n-Octacosane (C28)	16.953	1785602	16.009 ug/ml
17) T n-Tricontane (C30)	17.835	1741093	16.103 ug/ml
18) T n-Dotriacontane (C32)	18.662	1613023	16.357 ug/ml
19) T n-Tetratriacontane (C34)	19.441	1545551	16.850 ug/ml
20) T n-Hexatriacontane (C36)	20.176	1501050	17.308 ug/ml
21) T n-Octatriacontane (C38)	20.928	1442328	17.876 ug/ml
22) T n-Tetracontane (C40)	21.875	1491280	18.338 ug/ml

(f)=RT Delta > 1/2 Window

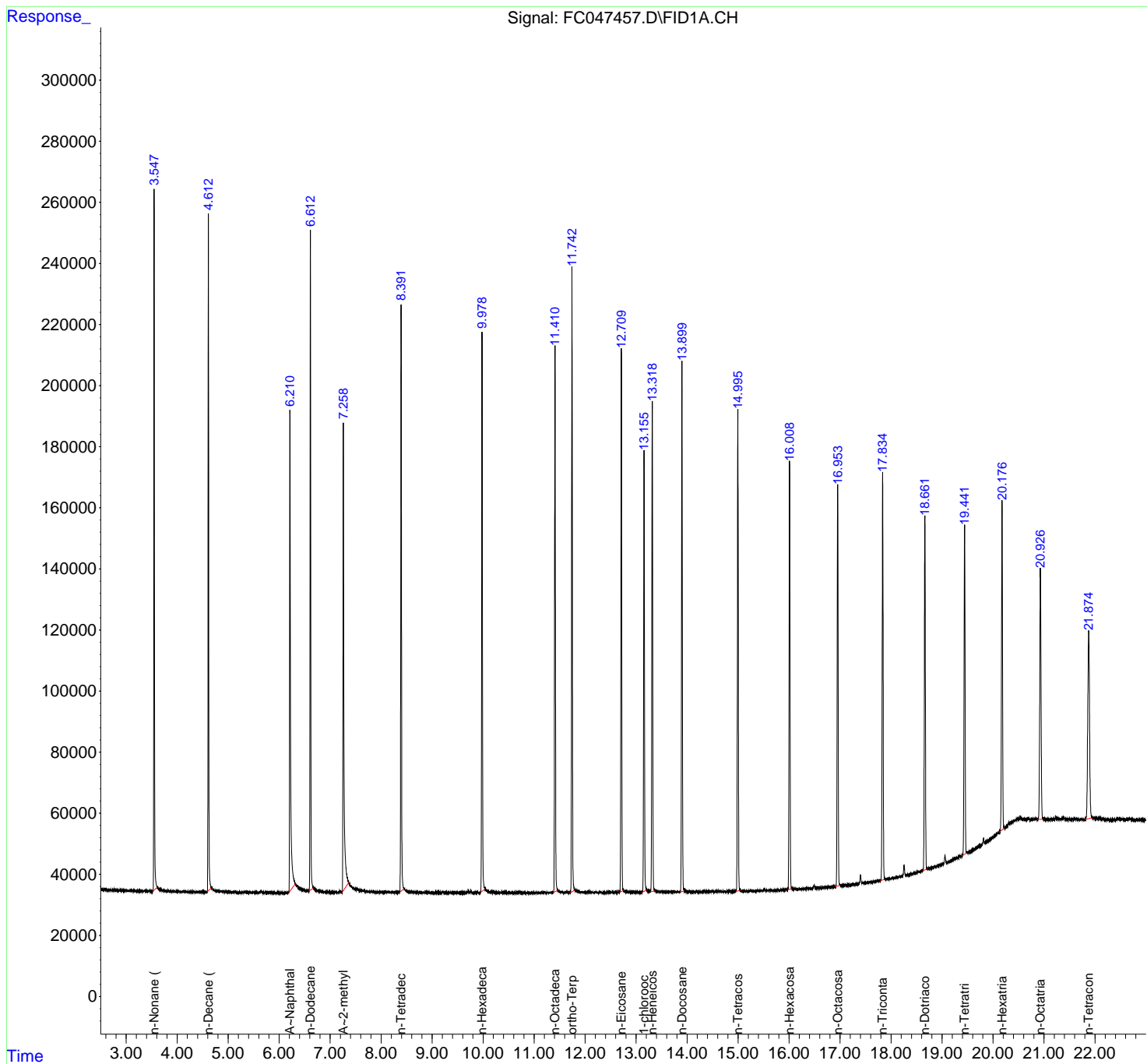
(m)=manual int.

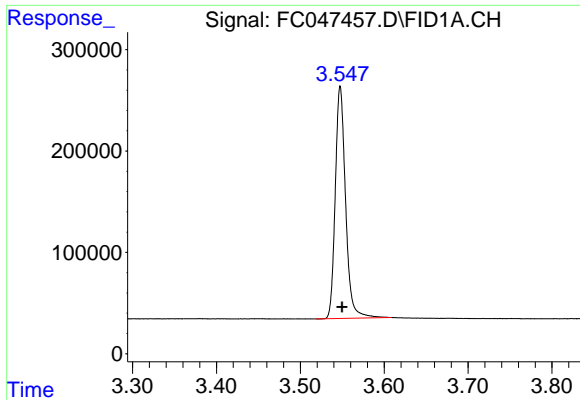
Data Path : Z:\pestpcbsrv\HPCHEM1\FID_C\Data\FC051520AL\
 Data File : FC047457.D
 Signal(s) : FID1A.CH
 Acq On : 15 May 2020 9:30
 Operator : DD\AJ
 Sample : 20 PPM ALIPHATIC HC STD
 Misc :
 ALS Vial : 2 Sample Multiplier: 1

Instrument :
 FID_C
 ClientSampled :
 20 PPM ALIPHATIC HC STD

Integration File: autoint1.e
 Quant Time: May 16 05:04:19 2020
 Quant Method : Z:\pestpcbsrv\HPCHEM1\FID_C\Method\Aliphatic EPH 050820.M
 Quant Title : GC Extractables
 QLast Update : Fri May 08 16:49:27 2020
 Response via : Initial Calibration
 Integrator: ChemStation 6890 Scale Mode: Large solvent peaks clipped

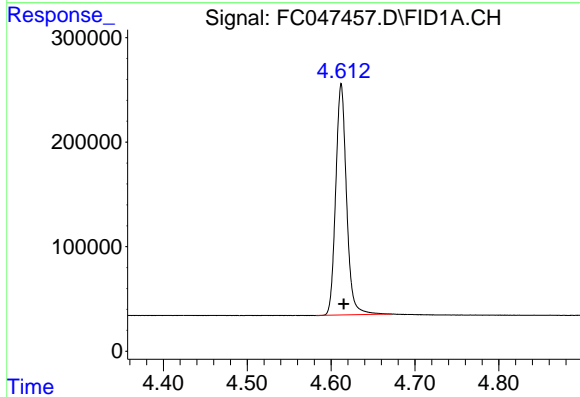
Volume Inj. : 1 ul
 Signal Phase : Rxi-1ms
 Signal Info : 20M x 0.18mm x 0.18um



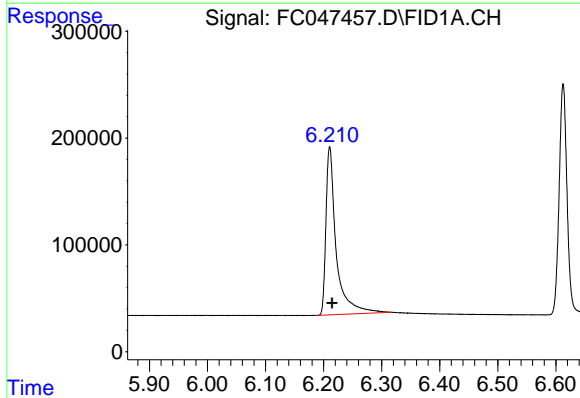


#1 n-Nonane (C9)
 R.T.: 3.548 min
 Delta R.T.: -0.002 min
 Response: 1958174
 Conc: 19.32 ug/ml

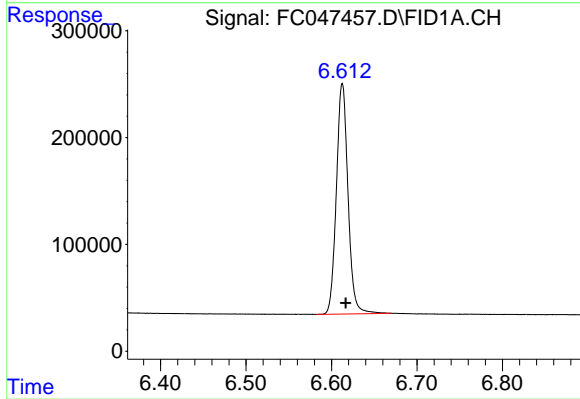
Instrument :
 FID_C
 ClientSampleId :
 20 PPM ALIPHATIC HC STD



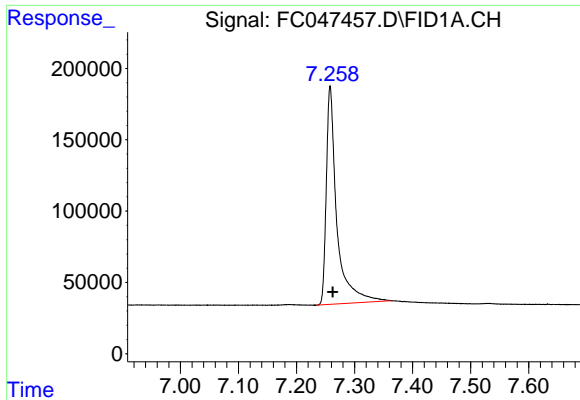
#2 n-Decane (C10)
 R.T.: 4.612 min
 Delta R.T.: -0.003 min
 Response: 1984213
 Conc: 19.42 ug/ml



#3 A~Naphthalene (C11.7)
 R.T.: 6.211 min
 Delta R.T.: -0.004 min
 Response: 1939050
 Conc: 18.62 ug/ml



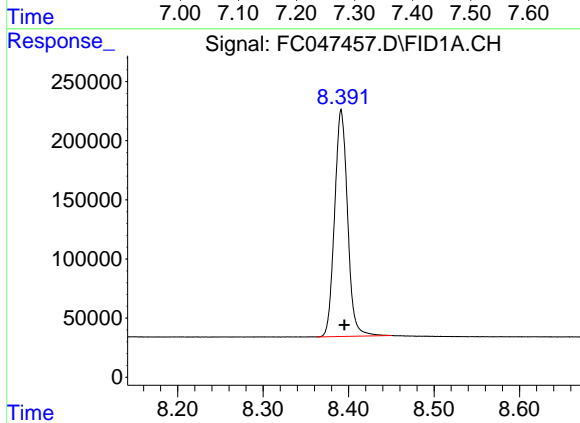
#4 n-Dodecane (C12)
 R.T.: 6.613 min
 Delta R.T.: -0.004 min
 Response: 2044193
 Conc: 19.35 ug/ml



#5 A~2-methylnaphthalene (C12.89)

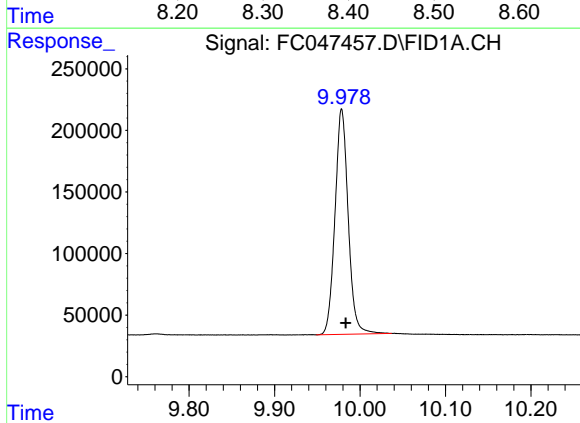
R.T.: 7.258 min
 Delta R.T.: -0.004 min
 Response: 1931002
 Conc: 18.39 ug/ml

Instrument :
 FID_C
 ClientSampleId :
 20 PPM ALIPHATIC HC STD



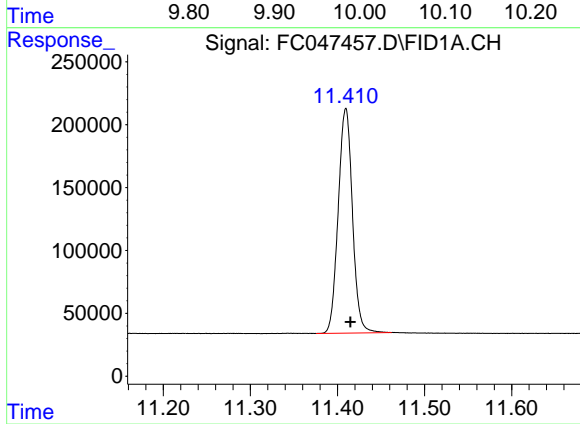
#6 n-Tetradecane (C14)

R.T.: 8.391 min
 Delta R.T.: -0.004 min
 Response: 2022045
 Conc: 19.12 ug/ml



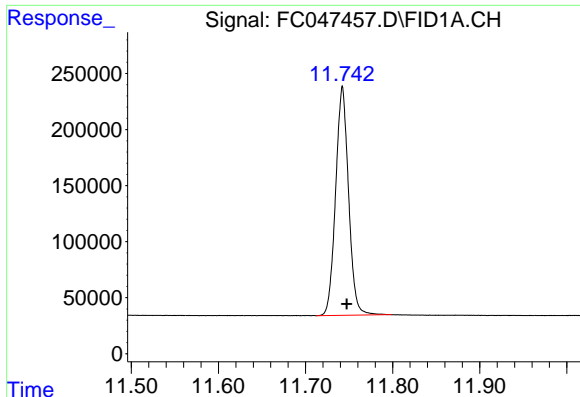
#7 n-Hexadecane (C16)

R.T.: 9.979 min
 Delta R.T.: -0.005 min
 Response: 1962402
 Conc: 18.55 ug/ml



#8 n-Octadecane (C18)

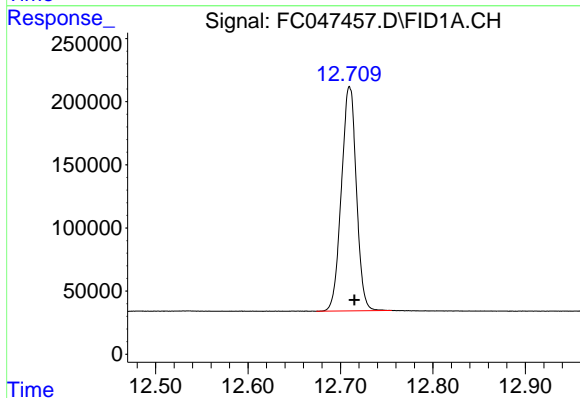
R.T.: 11.410 min
 Delta R.T.: -0.005 min
 Response: 2029161
 Conc: 18.12 ug/ml



#9 ortho-Terphenyl (SURR)

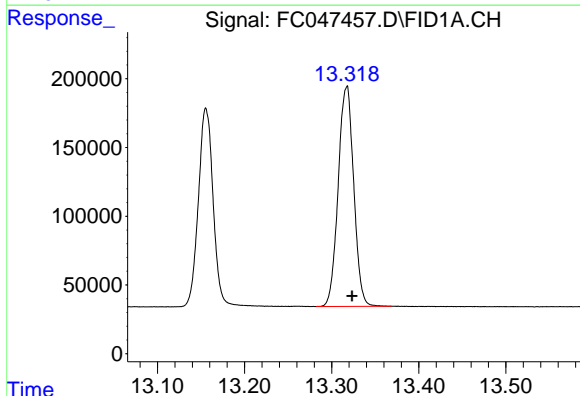
R.T.: 11.742 min
 Delta R.T.: -0.005 min
 Response: 2107681
 Conc: 17.63 ug/ml

Instrument :
 FID_C
 ClientSampleId :
 20 PPM ALIPHATIC HC STD



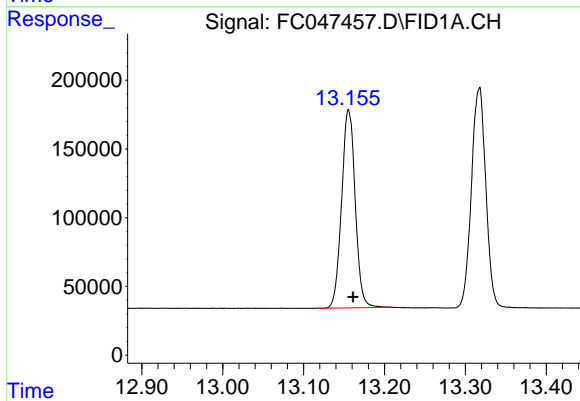
#10 n-Eicosane (C20)

R.T.: 12.710 min
 Delta R.T.: -0.005 min
 Response: 2000469
 Conc: 17.58 ug/ml



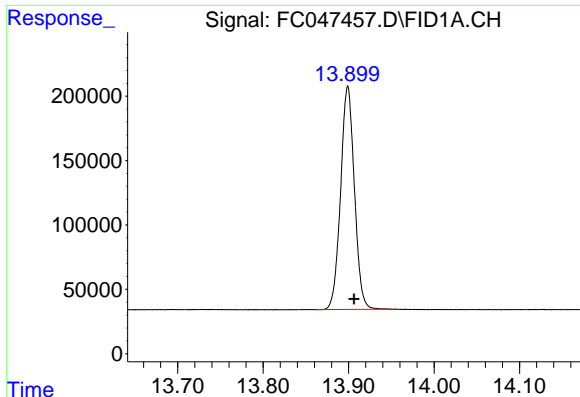
#11 n-Heneicosane (C21)

R.T.: 13.317 min
 Delta R.T.: -0.006 min
 Response: 1982131
 Conc: 17.43 ug/ml



#12 1-chlorooctadecane (SURR)

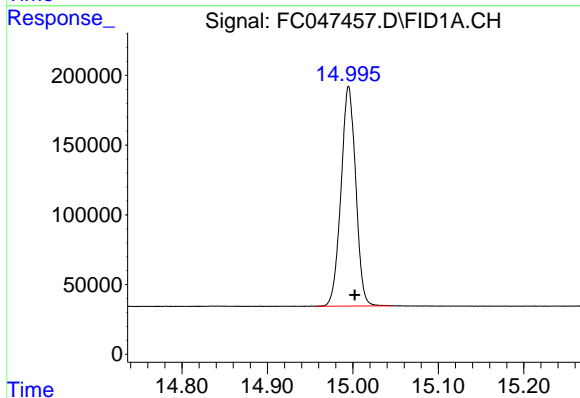
R.T.: 13.156 min
 Delta R.T.: -0.005 min
 Response: 1686658
 Conc: 17.20 ug/ml



#13 n-Docosane (C22)

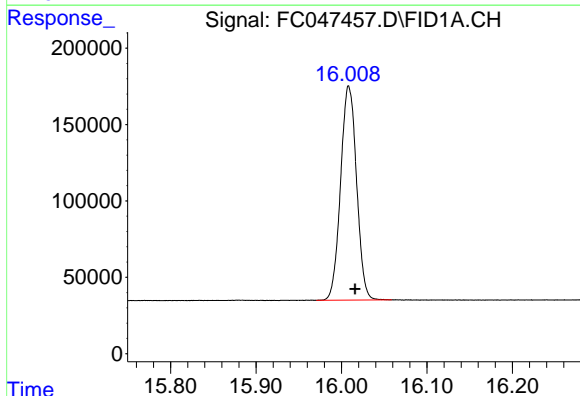
R.T.: 13.899 min
Delta R.T.: -0.007 min
Response: 1948003
Conc: 17.14 ug/ml

Instrument :
FID_C
ClientSampleId :
20 PPM ALIPHATIC HC STD



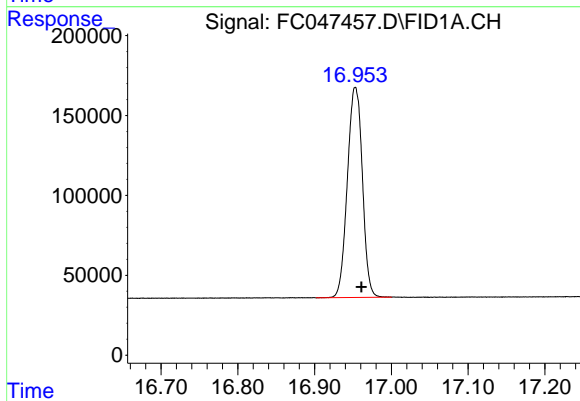
#14 n-Tetracosane (C24)

R.T.: 14.995 min
Delta R.T.: -0.007 min
Response: 1887650
Conc: 16.68 ug/ml



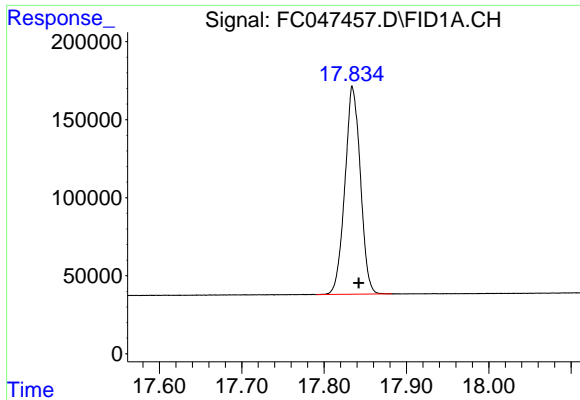
#15 n-Hexacosane (C26)

R.T.: 16.009 min
Delta R.T.: -0.007 min
Response: 1819555
Conc: 16.25 ug/ml



#16 n-Octacosane (C28)

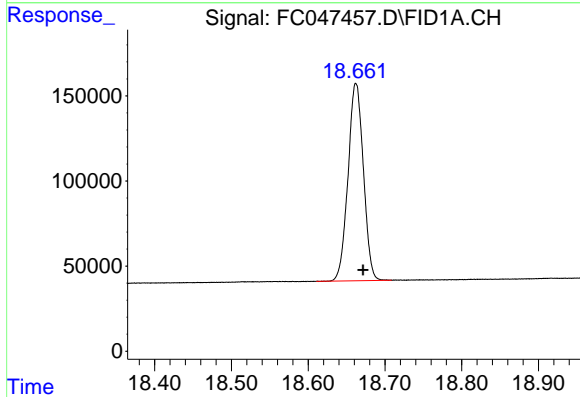
R.T.: 16.953 min
Delta R.T.: -0.008 min
Response: 1785602
Conc: 16.01 ug/ml



#17 n-Tricontane (C30)

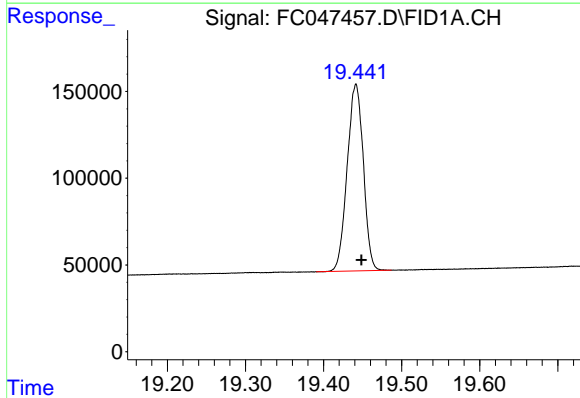
R.T.: 17.835 min
Delta R.T.: -0.008 min
Response: 1741093
Conc: 16.10 ug/ml

Instrument :
FID_C
ClientSampleId :
20 PPM ALIPHATIC HC STD



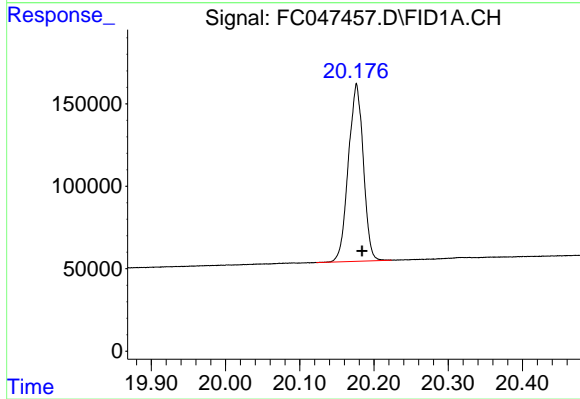
#18 n-Dotriacontane (C32)

R.T.: 18.662 min
Delta R.T.: -0.009 min
Response: 1613023
Conc: 16.36 ug/ml



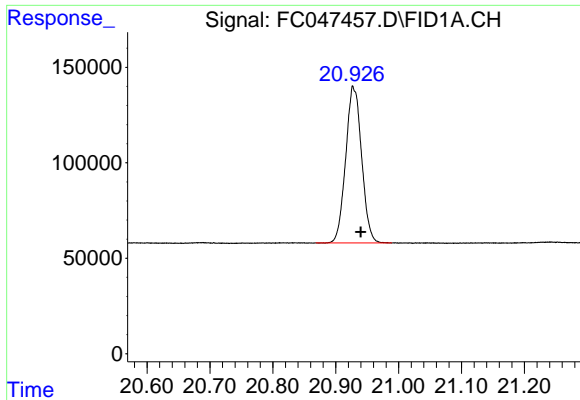
#19 n-Tetratriacontane (C34)

R.T.: 19.441 min
Delta R.T.: -0.007 min
Response: 1545551
Conc: 16.85 ug/ml



#20 n-Hexatriacontane (C36)

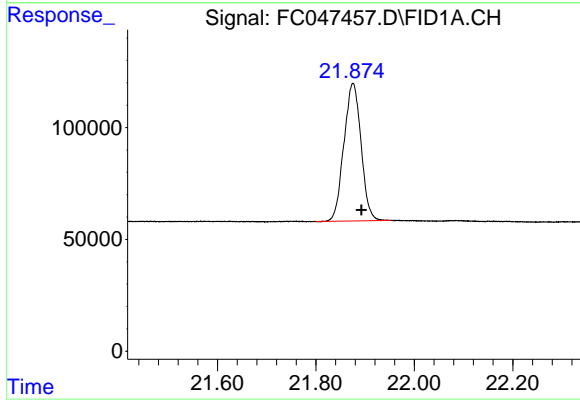
R.T.: 20.176 min
Delta R.T.: -0.008 min
Response: 1501050
Conc: 17.31 ug/ml



#21 n-Octatriacontane (C38)

R.T.: 20.928 min
Delta R.T.: -0.012 min
Response: 1442328
Conc: 17.88 ug/ml

Instrument :
FID_C
ClientSampleId :
20 PPM ALIPHATIC HC STD



#22 n-Tetracontane (C40)

R.T.: 21.875 min
Delta R.T.: -0.017 min
Response: 1491280
Conc: 18.34 ug/ml