

Data Path : Z:\pestpcbsrv\HPCHEM1\FID_C\Data\FC051723AL\
 Data File : FC063619.D
 Signal(s) : FID1A.ch
 Acq On : 18 May 2023 01:49
 Operator : YP/AJ
 Sample : 02781-01
 Misc :
 ALS Vial : 12 Sample Multiplier: 1

Instrument :
 FID_C
ClientSampleId :
 MGP-WASTE-WASTER-5/12/23

Integration File: sample.E
 Quant Time: May 18 03:44:53 2023
 Quant Method : Z:\pestpcbsrv\HPCHEM1\FID_C\Method\Aliphatic EPH 050523.M
 Quant Title : GC Extractables
 QLast Update : Fri May 05 18:15:25 2023
 Response via : Initial Calibration
 Integrator: ChemStation

Volume Inj. : 1 ul
 Signal Phase : Rxi-1ms
 Signal Info : 20M x 0.18mm x 0.18um

Compound	R.T.	Response	Conc Units

System Monitoring Compounds			
12) S 1-chlorooctadecane (S...	12.962	4175917	31.890 ug/ml
Spiked Amount	50.000	Recovery	= 63.78%

Target Compounds

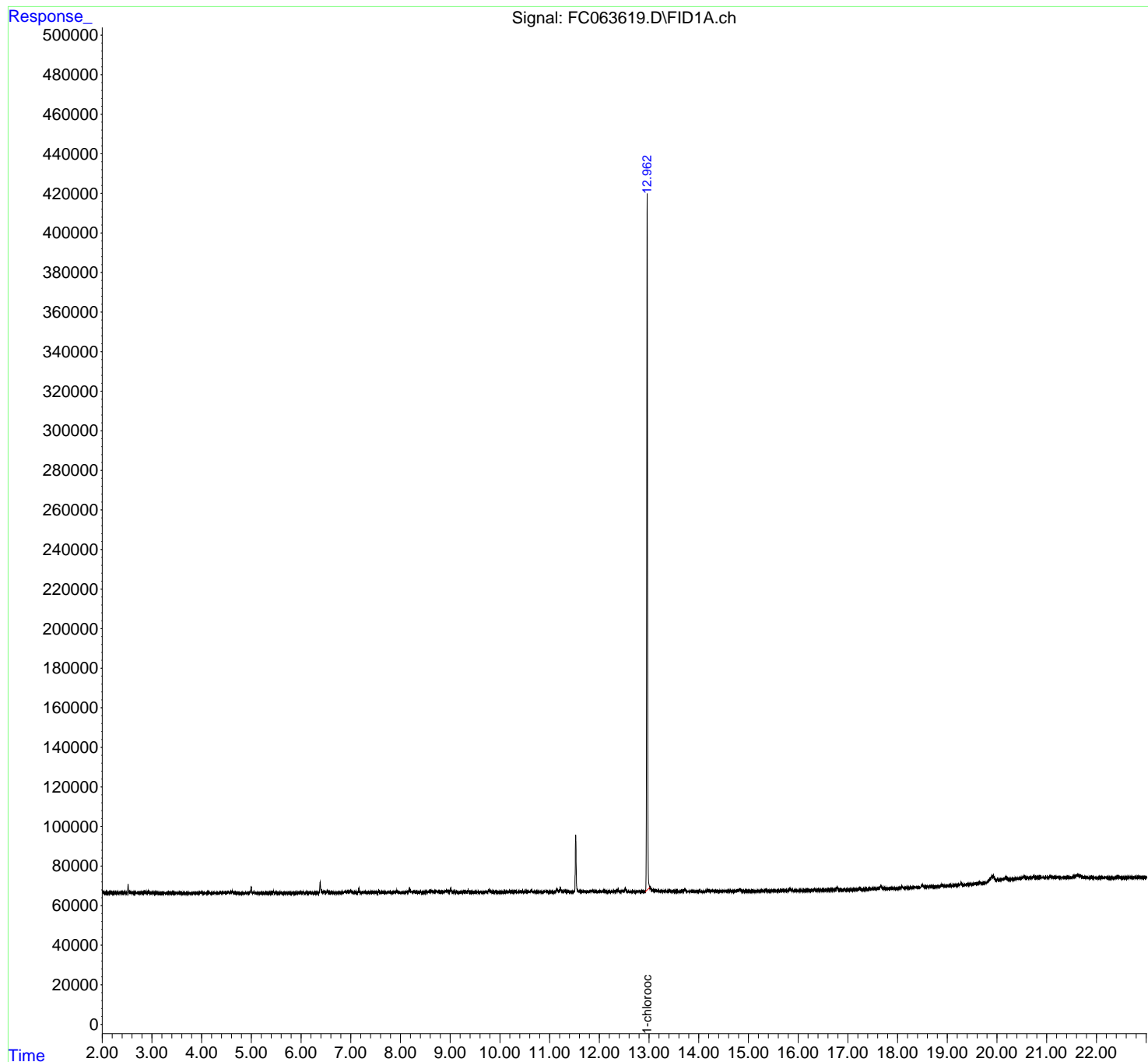
(f)=RT Delta > 1/2 Window (m)=manual int.

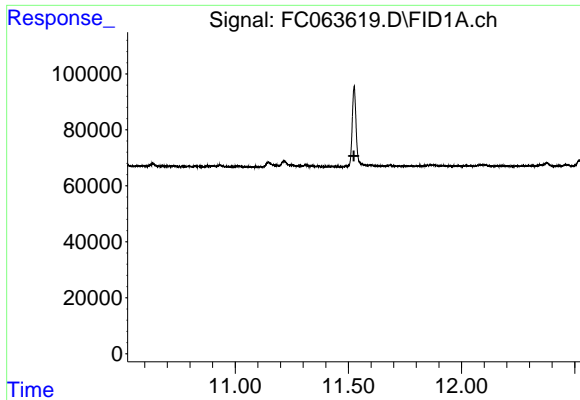
Data Path : Z:\pestpcbsrv\HPCHEM1\FID_C\Data\FC051723AL\
Data File : FC063619.D
Signal(s) : FID1A.ch
Acq On : 18 May 2023 01:49
Operator : YP/AJ
Sample : 02781-01
Misc :
ALS Vial : 12 Sample Multiplier: 1

Instrument :
FID_C
ClientSampleId :
MGP-WASTE-WASTER-5/12/23

Integration File: sample.E
Quant Time: May 18 03:44:53 2023
Quant Method : Z:\pestpcbsrv\HPCHEM1\FID_C\Method\Aliphatic EPH 050523.M
Quant Title : GC Extractables
QLast Update : Fri May 05 18:15:25 2023
Response via : Initial Calibration
Integrator: ChemStation

Volume Inj. : 1 ul
Signal Phase : Rxi-1ms
Signal Info : 20M x 0.18mm x 0.18um

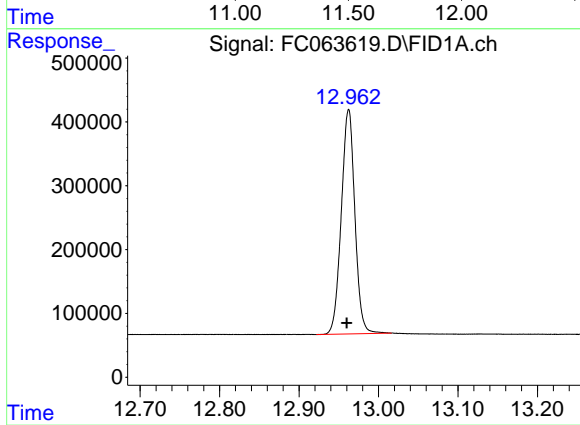




#9 ortho-Terphenyl (SURR)

R.T.: 0.000 min
 Exp R.T.: 11.524 min
 Response: 0
 Conc: N.D.

Instrument : FID_C
 ClientSampleId : MGP-WASTE-WASTER-5/12/23



#12 1-chlorooctadecane (SURR)

R.T.: 12.962 min
 Delta R.T.: 0.002 min
 Response: 4175917
 Conc: 31.89 ug/ml