

Data Path : Z:\pestpcbsrv\HPCHEM1\FID_C\Data\FC051724AL\
 Data File : FC066427.D
 Signal(s) : FID1A.ch
 Acq On : 18 May 2024 01:26
 Operator : YP/AJ
 Sample : 20 PPM ALIPHATIC HC STD
 Misc :
 ALS Vial : 100 Sample Multiplier: 1

Instrument :
 FID_C
ClientSampleId :
 20 PPM ALIPHATIC HC STD

Integration File: autoint1.e
 Quant Time: May 18 02:21:07 2024
 Quant Method : Z:\pestpcbsrv\HPCHEM1\FID_C\Method\Aliphatic EPH 050124.M
 Quant Title : GC Extractables
 QLast Update : Thu May 02 09:03:15 2024
 Response via : Initial Calibration
 Integrator: ChemStation

Volume Inj. : 1 ul
 Signal Phase : Rxi-1ms
 Signal Info : 20M x 0.18mm x 0.18um

Compound	R.T.	Response	Conc Units

System Monitoring Compounds			
9) S ortho-Terphenyl (SURR)	11.555	3396281	20.542 ug/ml
Spiked Amount	50.000	Recovery	= 41.08%
12) S 1-chlorooctadecane (S...	12.995	2535720	20.673 ug/ml
Spiked Amount	50.000	Recovery	= 41.35%
Target Compounds			
1) T n-Nonane (C9)	3.313	3080486	20.396 ug/ml
2) T n-Decane (C10)	4.380	3138053	20.406 ug/ml
3) T A~Naphthalene (C11.7)	5.962	3463524	20.386 ug/ml
4) T n-Dodecane (C12)	6.401	3133690	20.391 ug/ml
5) T A~2-methylnaphthalene...	7.020	3343618	20.288 ug/ml
6) T n-Tetradecane (C14)	8.197	3075464	20.322 ug/ml
7) T n-Hexadecane (C16)	9.798	3147800	20.586 ug/ml
8) T n-Octadecane (C18)	11.241	3150253	20.754 ug/ml
10) T n-Eicosane (C20)	12.551	3004807	20.888 ug/ml
11) T n-Heneicosane (C21)	13.163	2942458	20.933 ug/ml
13) T n-Docosane (C22)	13.750	2919516	20.853 ug/ml
14) T n-Tetracosane (C24)	14.853	2879609	20.455 ug/ml
15) T n-Hexacosane (C26)	15.874	2806441	20.517 ug/ml
16) T n-Octacosane (C28)	16.824	2739858	20.459 ug/ml
17) T n-Tricontane (C30)	17.711	2759865	20.479 ug/ml
18) T n-Dotriacontane (C32)	18.543	2693133	20.916 ug/ml
19) T n-Tetratriacontane (C34)	19.327	2575704	21.770 ug/ml
20) T n-Hexatriacontane (C36)	20.067	2460759	21.408 ug/ml
21) T n-Octatriacontane (C38)	20.801	2415966	22.446 ug/ml
22) T n-Tetracontane (C40)	21.711	2352248	21.936 ug/ml

(f)=RT Delta > 1/2 Window

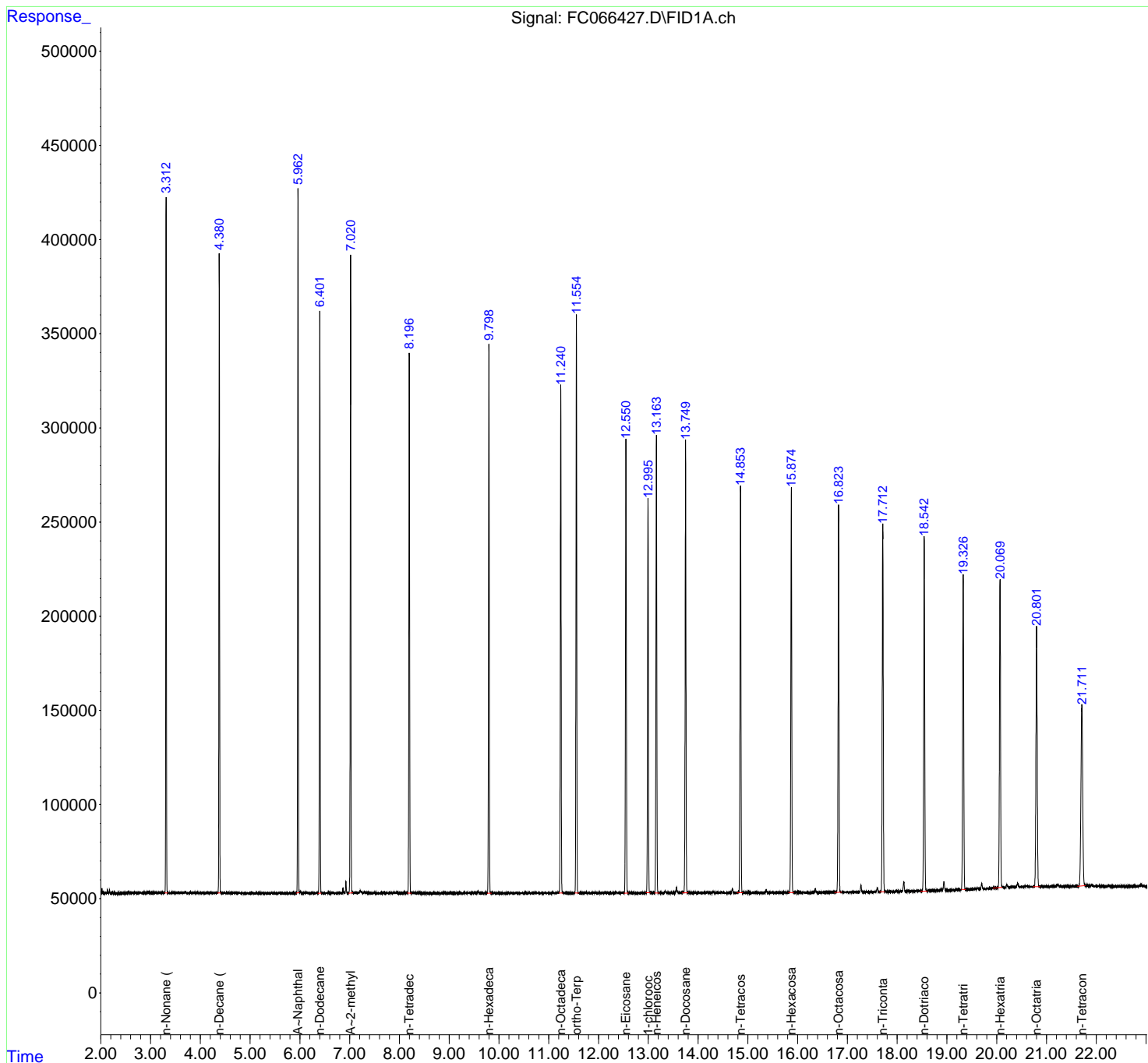
(m)=manual int.

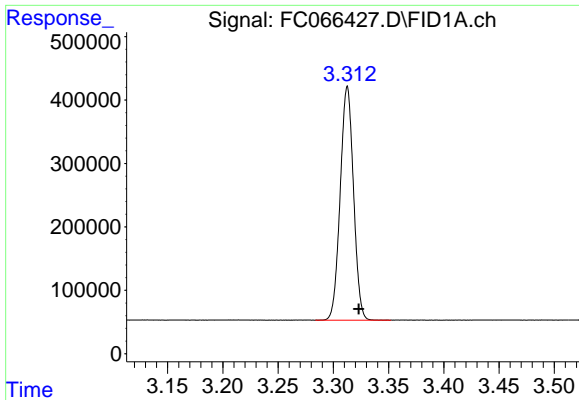
Data Path : Z:\pestpcbsrv\HPCHEM1\FID_C\Data\FC051724AL\
 Data File : FC066427.D
 Signal(s) : FID1A.ch
 Acq On : 18 May 2024 01:26
 Operator : YP/AJ
 Sample : 20 PPM ALIPHATIC HC STD
 Misc :
 ALS Vial : 100 Sample Multiplier: 1

Instrument :
 FID_C
 ClientSampleId :
 20 PPM ALIPHATIC HC STD

Integration File: autoint1.e
 Quant Time: May 18 02:21:07 2024
 Quant Method : Z:\pestpcbsrv\HPCHEM1\FID_C\Method\Aliphatic EPH 050124.M
 Quant Title : GC Extractables
 QLast Update : Thu May 02 09:03:15 2024
 Response via : Initial Calibration
 Integrator: ChemStation

Volume Inj. : 1 ul
 Signal Phase : Rxi-1ms
 Signal Info : 20M x 0.18mm x 0.18um

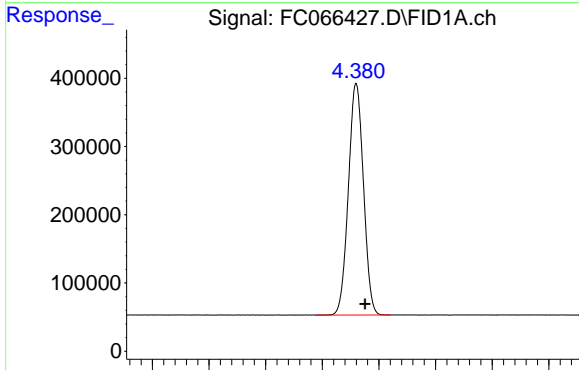




#1 n-Nonane (C9)

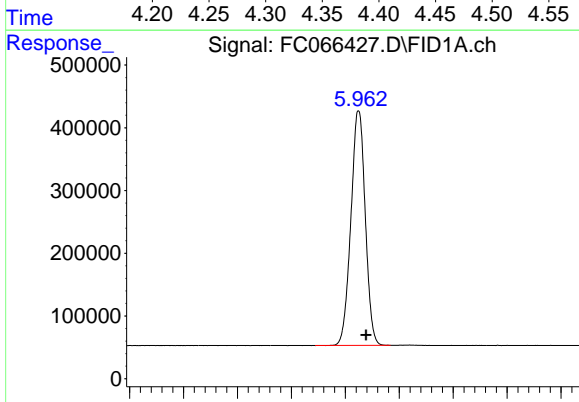
R.T.: 3.313 min
 Delta R.T.: -0.010 min
 Response: 3080486
 Conc: 20.40 ug/ml

Instrument : FID_C
 ClientSampleId : 20 PPM ALIPHATIC HC STD



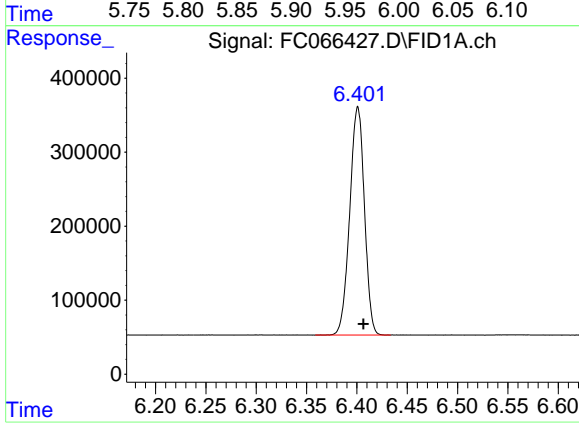
#2 n-Decane (C10)

R.T.: 4.380 min
 Delta R.T.: -0.008 min
 Response: 3138053
 Conc: 20.41 ug/ml



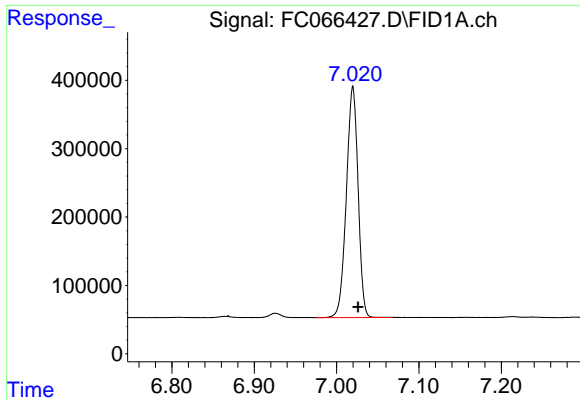
#3 A~Naphthalene (C11.7)

R.T.: 5.962 min
 Delta R.T.: -0.007 min
 Response: 3463524
 Conc: 20.39 ug/ml



#4 n-Dodecane (C12)

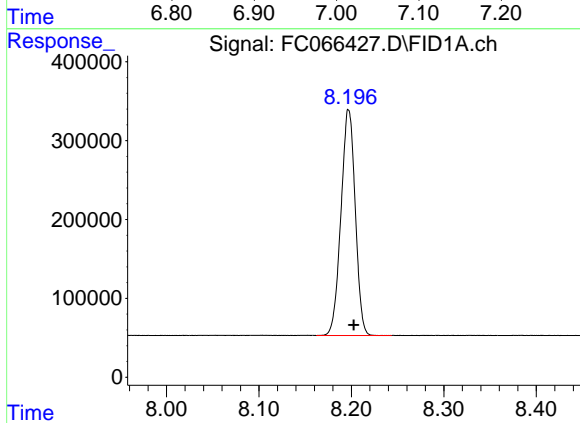
R.T.: 6.401 min
 Delta R.T.: -0.005 min
 Response: 3133690
 Conc: 20.39 ug/ml



#5 A~2-methylnaphthalene (C12.89)

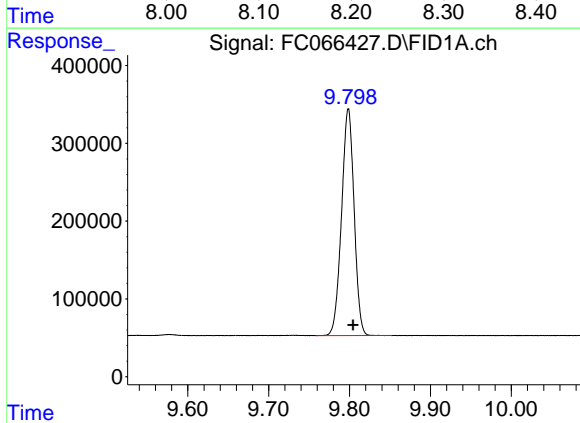
R.T.: 7.020 min
 Delta R.T.: -0.007 min
 Response: 3343618
 Conc: 20.29 ug/ml

Instrument : FID_C
 ClientSampleId : 20 PPM ALIPHATIC HC STD



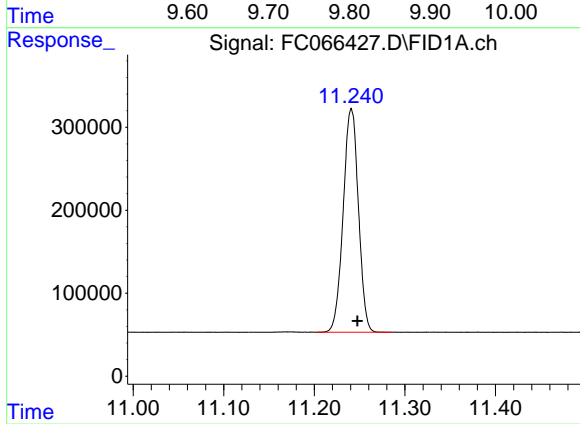
#6 n-Tetradecane (C14)

R.T.: 8.197 min
 Delta R.T.: -0.005 min
 Response: 3075464
 Conc: 20.32 ug/ml



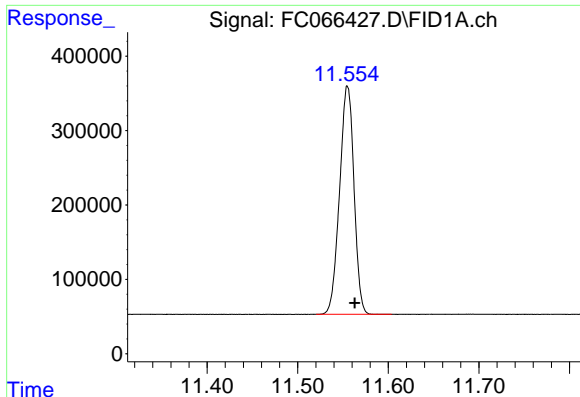
#7 n-Hexadecane (C16)

R.T.: 9.798 min
 Delta R.T.: -0.006 min
 Response: 3147800
 Conc: 20.59 ug/ml



#8 n-Octadecane (C18)

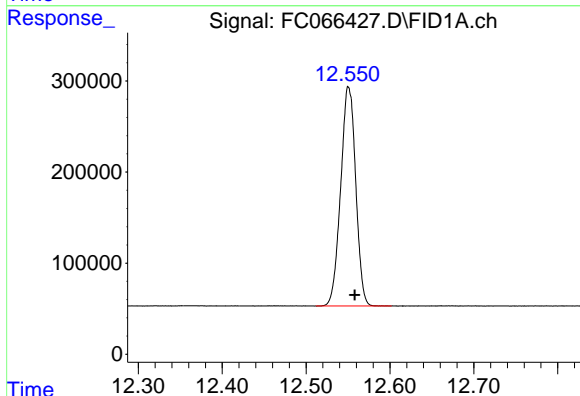
R.T.: 11.241 min
 Delta R.T.: -0.007 min
 Response: 3150253
 Conc: 20.75 ug/ml



#9 ortho-Terphenyl (SURR)

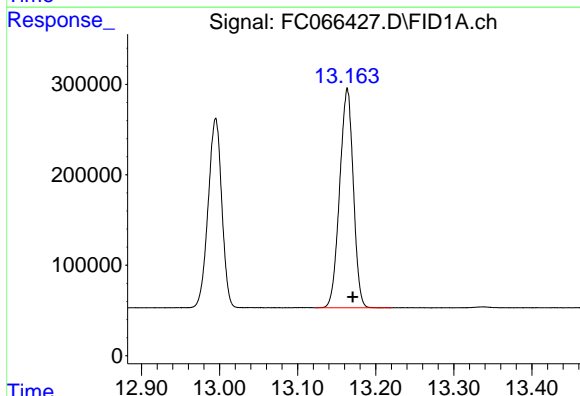
R.T.: 11.555 min
 Delta R.T.: -0.008 min
 Response: 3396281
 Conc: 20.54 ug/ml

Instrument :
 FID_C
 ClientSampleId :
 20 PPM ALIPHATIC HC STD



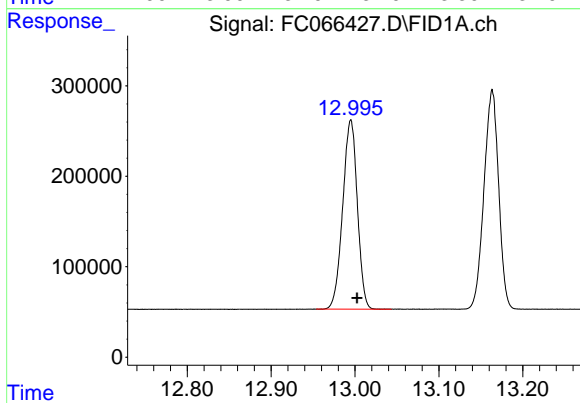
#10 n-Eicosane (C20)

R.T.: 12.551 min
 Delta R.T.: -0.007 min
 Response: 3004807
 Conc: 20.89 ug/ml



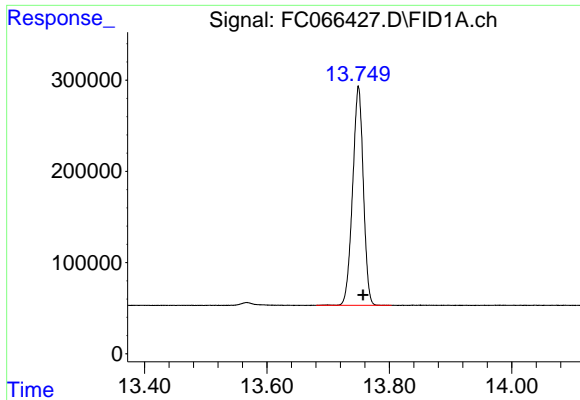
#11 n-Heneicosane (C21)

R.T.: 13.163 min
 Delta R.T.: -0.007 min
 Response: 2942458
 Conc: 20.93 ug/ml



#12 1-chlorooctadecane (SURR)

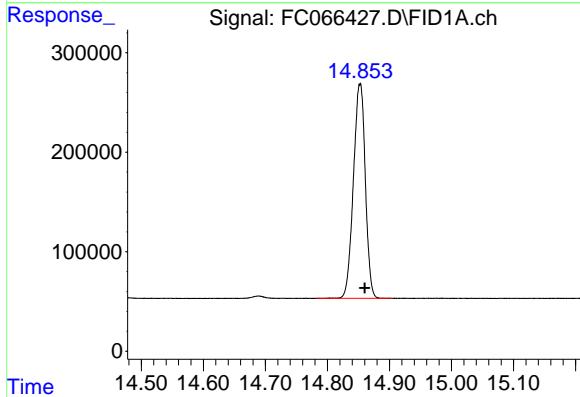
R.T.: 12.995 min
 Delta R.T.: -0.007 min
 Response: 2535720
 Conc: 20.67 ug/ml



#13 n-Docosane (C22)

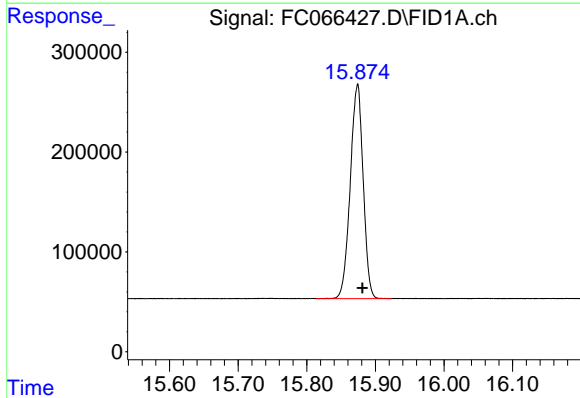
R.T.: 13.750 min
 Delta R.T.: -0.007 min
 Response: 2919516
 Conc: 20.85 ug/ml

Instrument : FID_C
 ClientSampleId : 20 PPM ALIPHATIC HC STD



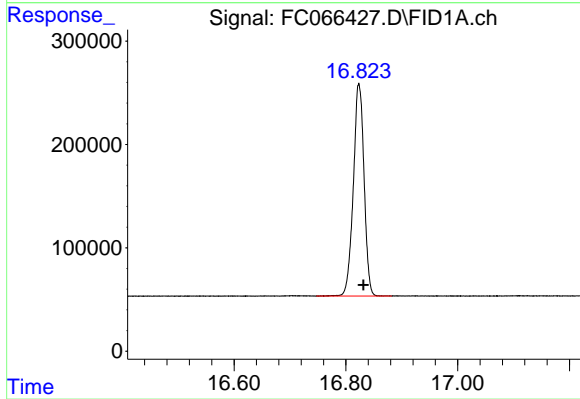
#14 n-Tetracosane (C24)

R.T.: 14.853 min
 Delta R.T.: -0.008 min
 Response: 2879609
 Conc: 20.45 ug/ml



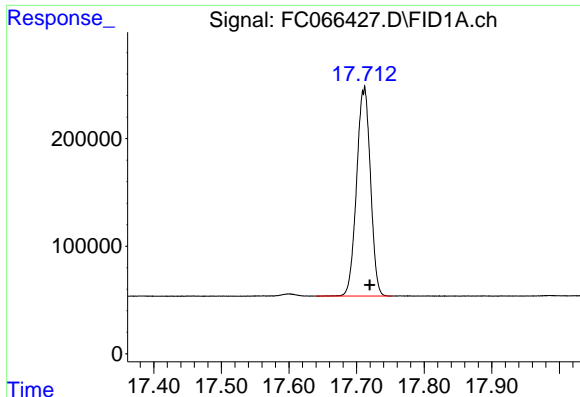
#15 n-Hexacosane (C26)

R.T.: 15.874 min
 Delta R.T.: -0.007 min
 Response: 2806441
 Conc: 20.52 ug/ml



#16 n-Octacosane (C28)

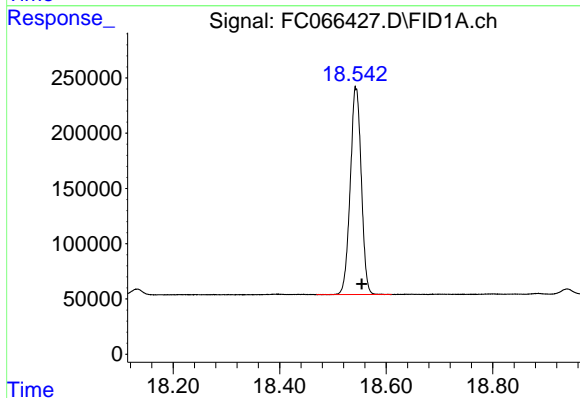
R.T.: 16.824 min
 Delta R.T.: -0.008 min
 Response: 2739858
 Conc: 20.46 ug/ml



#17 n-Tricontane (C30)

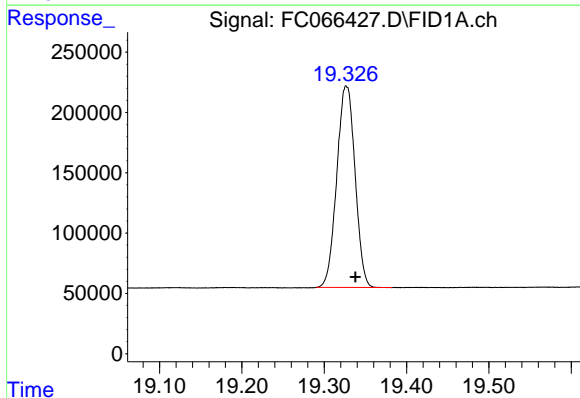
R.T.: 17.711 min
Delta R.T.: -0.009 min
Response: 2759865
Conc: 20.48 ug/ml

Instrument :
FID_C
ClientSampleId :
20 PPM ALIPHATIC HC STD



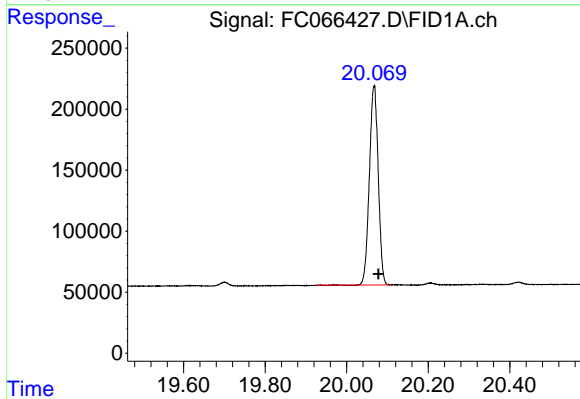
#18 n-Dotriacontane (C32)

R.T.: 18.543 min
Delta R.T.: -0.011 min
Response: 2693133
Conc: 20.92 ug/ml



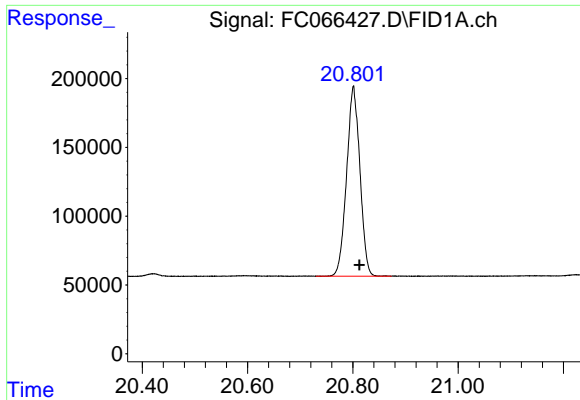
#19 n-Tetratriacontane (C34)

R.T.: 19.327 min
Delta R.T.: -0.011 min
Response: 2575704
Conc: 21.77 ug/ml



#20 n-Hexatriacontane (C36)

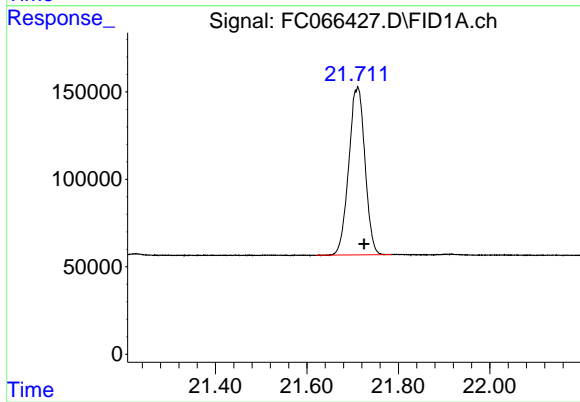
R.T.: 20.067 min
Delta R.T.: -0.011 min
Response: 2460759
Conc: 21.41 ug/ml



#21 n-Octatriacontane (C38)

R.T.: 20.801 min
Delta R.T.: -0.012 min
Response: 2415966
Conc: 22.45 ug/ml

Instrument :
FID_C
ClientSampleId :
20 PPM ALIPHATIC HC STD



#22 n-Tetracontane (C40)

R.T.: 21.711 min
Delta R.T.: -0.015 min
Response: 2352248
Conc: 21.94 ug/ml