

Data Path : Z:\pestpcbsrv\HPCHEM1\FID_C\Data\FC051819AL\
 Data File : FC041317.D
 Signal(s) : FID1A.CH
 Acq On : 19 May 2019 2:06
 Operator : EI\AJ
 Sample : K2922-01
 Misc :
 ALS Vial : 14 Sample Multiplier: 1

Integration File: autoint1.e
 Quant Time: May 20 00:49:22 2019
 Quant Method : Z:\pestpcbsrv\HPCHEM1\FID_C\Method\Alaphatic EPH 051519.M
 Quant Title : GC Extractables
 QLast Update : Wed May 15 16:14:00 2019
 Response via : Initial Calibration
 Integrator: ChemStation 6890 Scale Mode: Large solvent peaks clipped

Volume Inj. : 1 ul
 Signal Phase : Rxi-1ms
 Signal Info : 20M x 0.18mm x 0.18um

Compound	R.T.	Response	Conc Units

System Monitoring Compounds			
9) S ortho-Terphenyl (SURR)	11.701	3858291	38.240 ug/ml
Spiked Amount	50.000	Recovery	= 76.48%
12) S 1-chlorooctadecane (S...	13.126	3039667	38.285 ug/ml
Spiked Amount	50.000	Recovery	= 76.57%
Target Compounds			
6) T n-Tetradecane (C14)	8.408f	320745	3.578 ug/ml
16) T n-Octacosane (C28)	16.937	125963	1.376 ug/ml
17) T n-Tricontane (C30)	17.821	172232	1.917 ug/ml
18) T n-Dotriacontane (C32)	18.648	176037	2.104 ug/ml

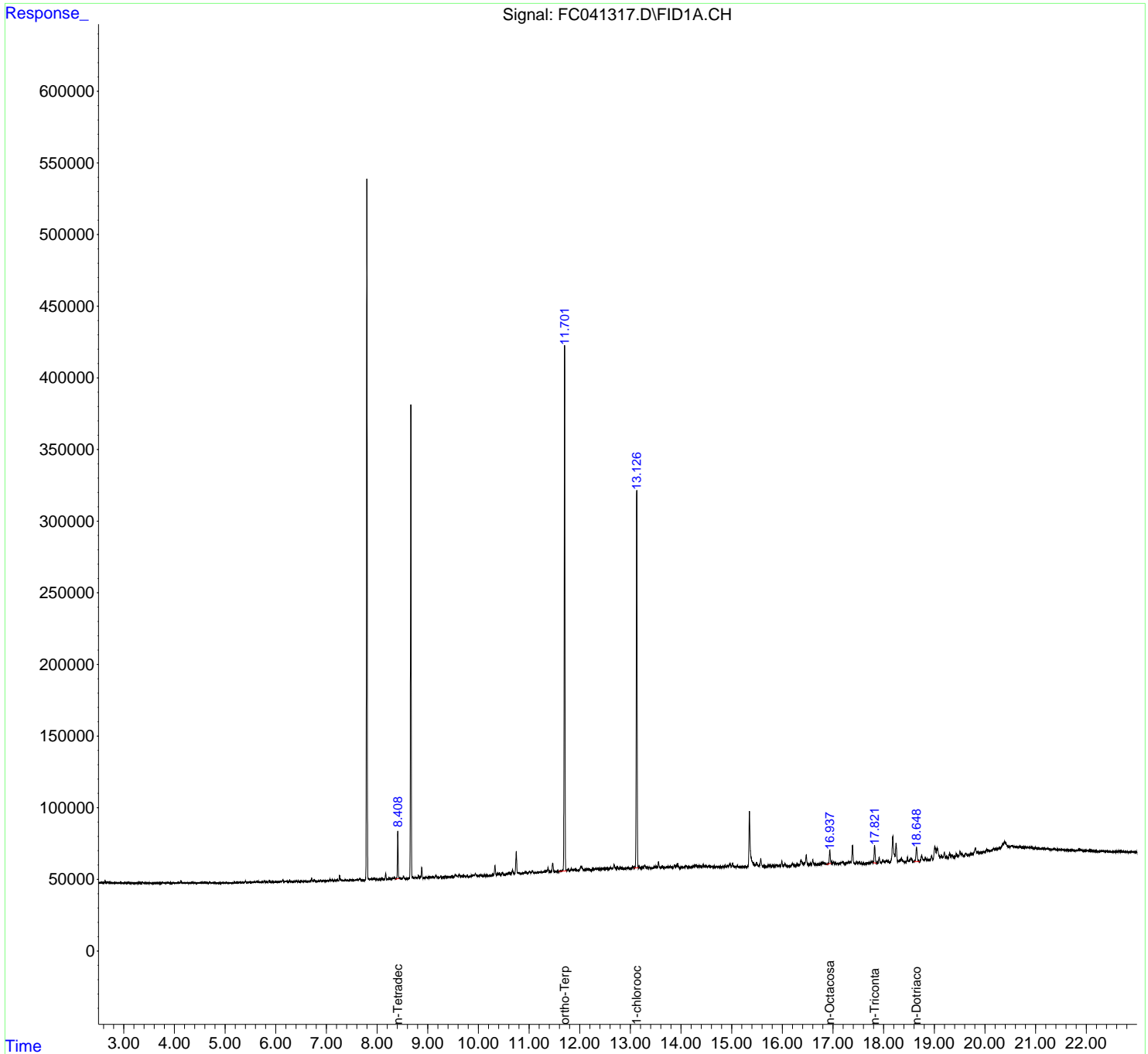
(f)=RT Delta > 1/2 Window

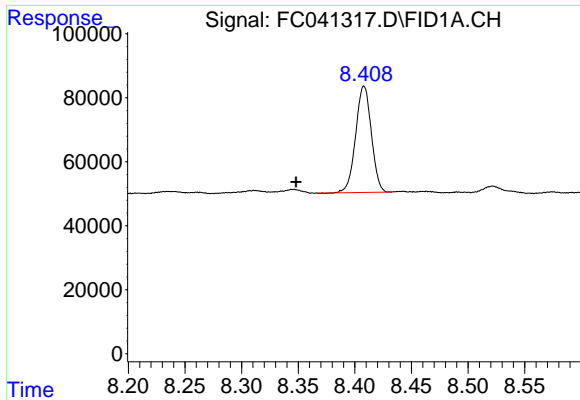
(m)=manual int.

Data Path : Z:\pestpcbsrv\HPCHEM1\FID_C\Data\FC051819AL\
Data File : FC041317.D
Signal(s) : FID1A.CH
Acq On : 19 May 2019 2:06
Operator : EI\AJ
Sample : K2922-01
Misc :
ALS Vial : 14 Sample Multiplier: 1

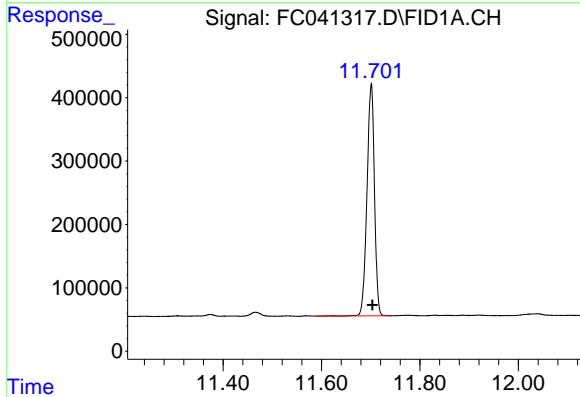
Integration File: autoint1.e
Quant Time: May 20 00:49:22 2019
Quant Method : Z:\pestpcbsrv\HPCHEM1\FID_C\Method\Alaphatic EPH 051519.M
Quant Title : GC Extractables
QLast Update : Wed May 15 16:14:00 2019
Response via : Initial Calibration
Integrator: ChemStation 6890 Scale Mode: Large solvent peaks clipped

Volume Inj. : 1 ul
Signal Phase : Rxi-1ms
Signal Info : 20M x 0.18mm x 0.18um

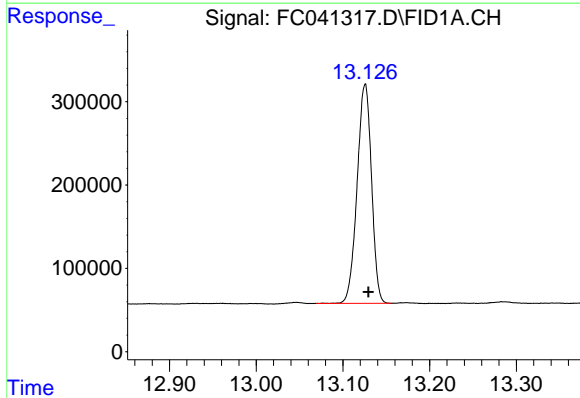




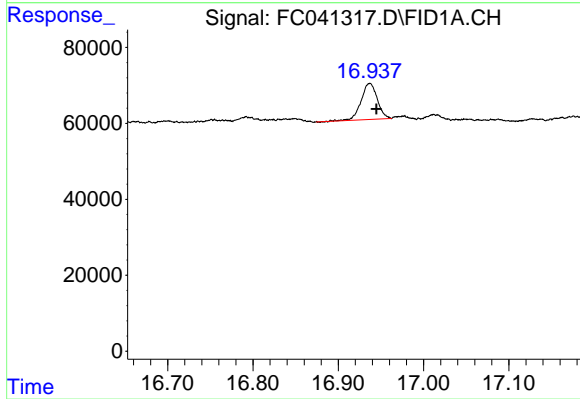
#6 n-Tetradecane (C14)
 R.T.: 8.408 min
 Delta R.T.: 0.060 min
 Response: 320745
 Conc: 3.58 ug/ml



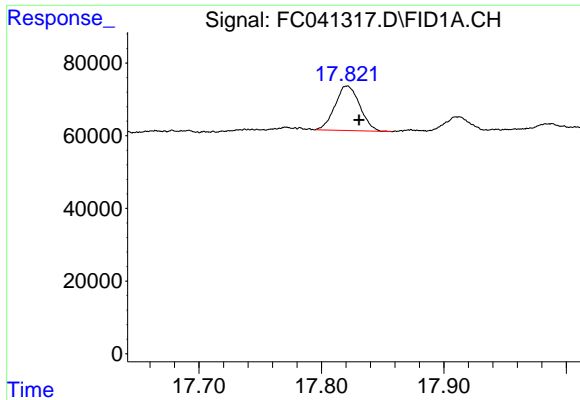
#9 ortho-Terphenyl (SURR)
 R.T.: 11.701 min
 Delta R.T.: -0.002 min
 Response: 3858291
 Conc: 38.24 ug/ml



#12 1-chlorooctadecane (SURR)
 R.T.: 13.126 min
 Delta R.T.: -0.004 min
 Response: 3039667
 Conc: 38.29 ug/ml

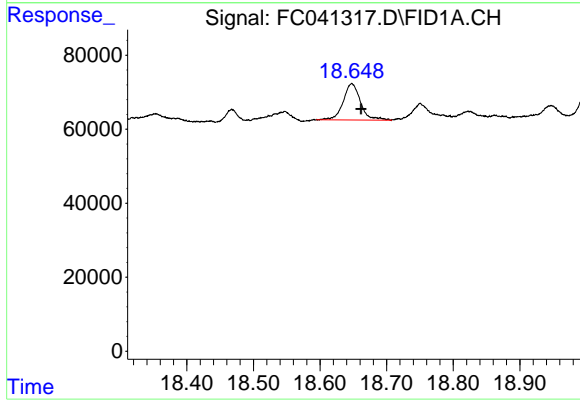


#16 n-Octacosane (C28)
 R.T.: 16.937 min
 Delta R.T.: -0.008 min
 Response: 125963
 Conc: 1.38 ug/ml



#17 n-Tricontane (C30)

R.T.: 17.821 min
Delta R.T.: -0.010 min
Response: 172232
Conc: 1.92 ug/ml



#18 n-Dotriacontane (C32)

R.T.: 18.648 min
Delta R.T.: -0.014 min
Response: 176037
Conc: 2.10 ug/ml