

Data Path : Z:\pestpcbsrv\HPCHEM1\FID_C\Data\FC052120AL\
 Data File : FC047545.D
 Signal(s) : FID1A.CH
 Acq On : 21 May 2020 18:49
 Operator : DD\AJ
 Sample : L2728-01
 Misc :
 ALS Vial : 10 Sample Multiplier: 1

Instrument :
 FID_C
 ClientSampleId :

Integration File: autoint1.e
 Quant Time: May 22 01:59:23 2020
 Quant Method : Z:\pestpcbsrv\HPCHEM1\FID_C\Method\Alaphatic EPH 050820.M
 Quant Title : GC Extractables
 QLast Update : Fri May 08 16:49:27 2020
 Response via : Initial Calibration
 Integrator: ChemStation 6890 Scale Mode: Large solvent peaks clipped

Volume Inj. : 1 ul
 Signal Phase : Rxi-1ms
 Signal Info : 20M x 0.18mm x 0.18um

Compound	R.T.	Response	Conc Units

System Monitoring Compounds			
9) S ortho-Terphenyl (SURR)	11.739	4455851	37.275 ug/ml
Spiked Amount	50.000	Recovery	= 74.55%
12) S 1-chlorooctadecane (S...	13.152	3558359	36.279 ug/ml
Spiked Amount	50.000	Recovery	= 72.56%
Target Compounds			
17) T n-Tricontane (C30)	17.830	91818	0.849 ug/ml

(f)=RT Delta > 1/2 Window

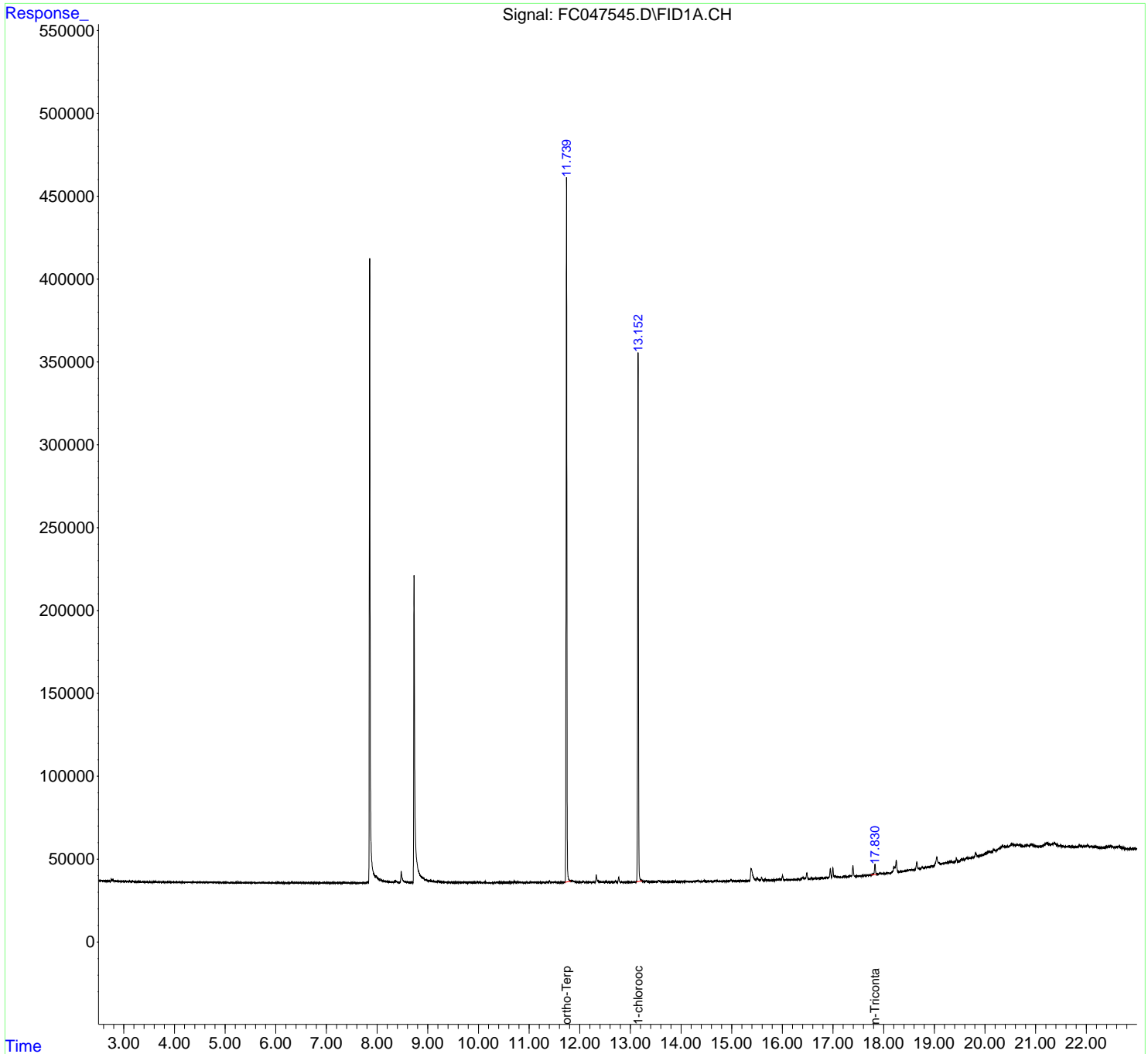
(m)=manual int.

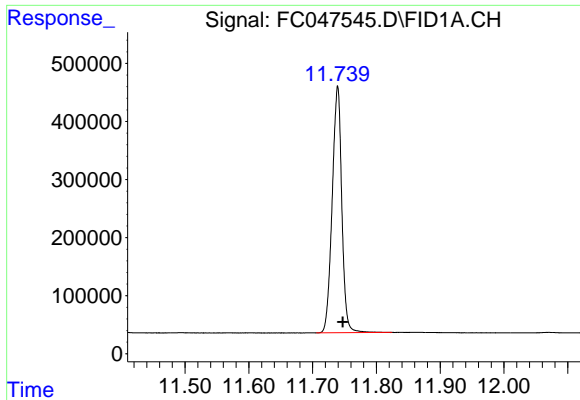
Data Path : Z:\pestpcbsrv\HPCHEM1\FID_C\Data\FC052120AL\
Data File : FC047545.D
Signal(s) : FID1A.CH
Acq On : 21 May 2020 18:49
Operator : DD\AJ
Sample : L2728-01
Misc :
ALS Vial : 10 Sample Multiplier: 1

Instrument :
FID_C
ClientSampled :

Integration File: autoint1.e
Quant Time: May 22 01:59:23 2020
Quant Method : Z:\pestpcbsrv\HPCHEM1\FID_C\Method\Aliphatic EPH 050820.M
Quant Title : GC Extractables
QLast Update : Fri May 08 16:49:27 2020
Response via : Initial Calibration
Integrator: ChemStation 6890 Scale Mode: Large solvent peaks clipped

Volume Inj. : 1 ul
Signal Phase : Rxi-1ms
Signal Info : 20M x 0.18mm x 0.18um

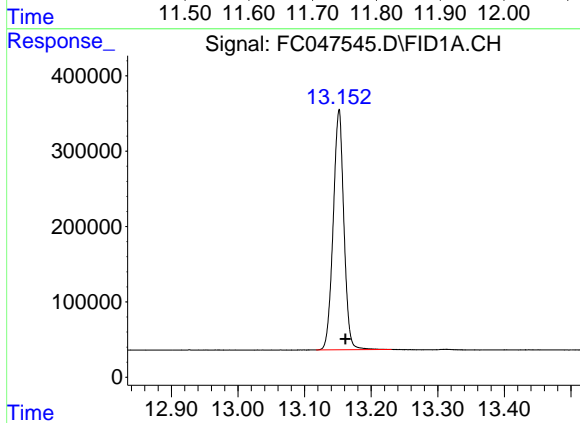




#9 ortho-Terphenyl (SURR)

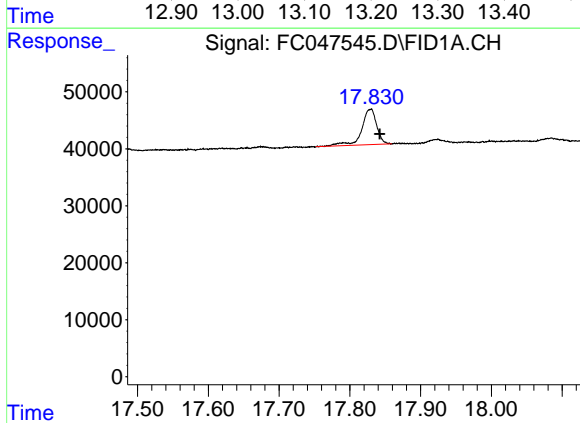
R.T.: 11.739 min
Delta R.T.: -0.008 min
Response: 4455851
Conc: 37.27 ug/ml

Instrument :
FID_C
ClientSampleId :



#12 1-chlorooctadecane (SURR)

R.T.: 13.152 min
Delta R.T.: -0.009 min
Response: 3558359
Conc: 36.28 ug/ml



#17 n-Tricontane (C30)

R.T.: 17.830 min
Delta R.T.: -0.012 min
Response: 91818
Conc: 0.85 ug/ml