

Data Path : Z:\pestpcbsrv\HPCHEM1\FID\_C\Data\FC052125AL\  
 Data File : FC068955.D  
 Signal(s) : FID1A.ch  
 Acq On : 21 May 2025 09:30  
 Operator : YP/AJ  
 Sample : Q2068-03DL 20X  
 Misc :  
 ALS Vial : 11 Sample Multiplier: 1

**Instrument :**  
 FID\_C  
**ClientSampleId :**  
 LAW-25-0074DL

Integration File: autoint1.e  
 Quant Time: May 21 11:28:21 2025  
 Quant Method : Z:\pestpcbsrv\HPCHEM1\FID\_C\Method\Aliphatic EPH 050625.M  
 Quant Title : GC Extractables  
 QLast Update : Wed May 07 08:52:03 2025  
 Response via : Initial Calibration  
 Integrator: ChemStation

Volume Inj. : 1 ul  
 Signal Phase : Rxi-1ms  
 Signal Info : 20M x 0.18mm x 0.18um

Compound	R.T.	Response	Conc Units
----------	------	----------	------------

-----  
 System Monitoring Compounds

Target Compounds  
 -----

(f)=RT Delta > 1/2 Window

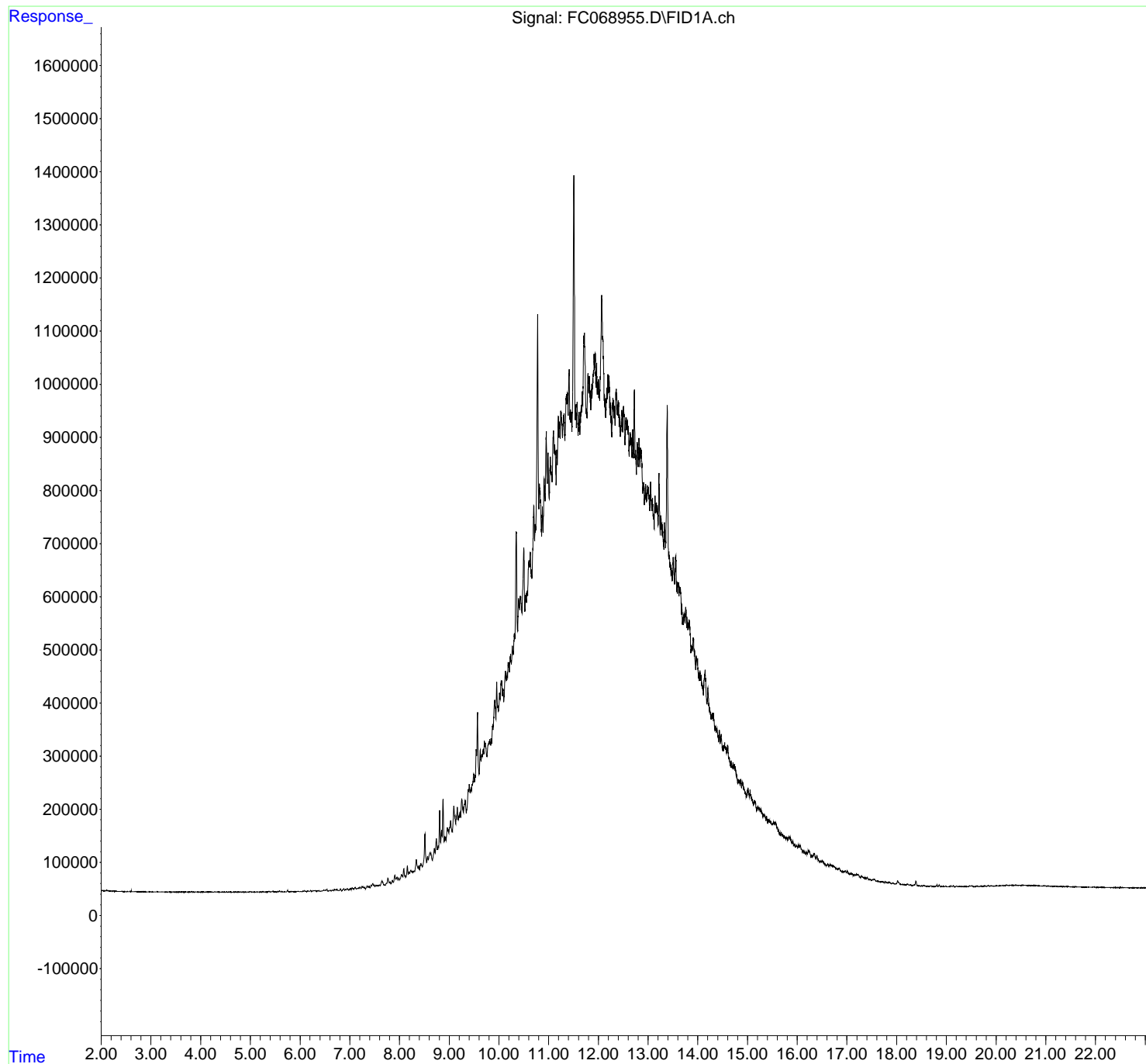
(m)=manual int.

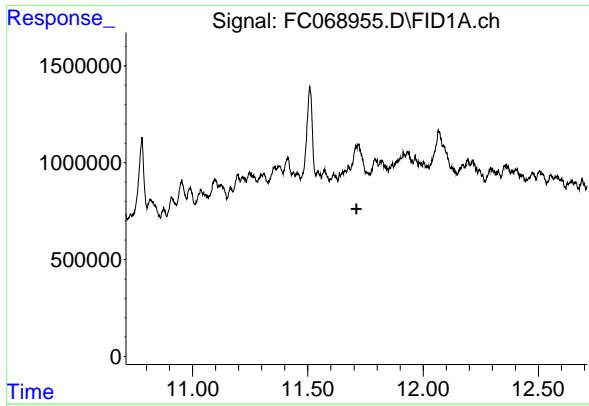
Data Path : Z:\pestpcbsrv\HPCHEM1\FID\_C\Data\FC052125AL\  
Data File : FC068955.D  
Signal(s) : FID1A.ch  
Acq On : 21 May 2025 09:30  
Operator : YP/AJ  
Sample : Q2068-03DL 20X  
Misc :  
ALS Vial : 11 Sample Multiplier: 1

Instrument :  
FID\_C  
ClientSampleId :  
LAW-25-0074DL

Integration File: autoint1.e  
Quant Time: May 21 11:28:21 2025  
Quant Method : Z:\pestpcbsrv\HPCHEM1\FID\_C\Method\Aliphatic EPH 050625.M  
Quant Title : GC Extractables  
QLast Update : Wed May 07 08:52:03 2025  
Response via : Initial Calibration  
Integrator: ChemStation

Volume Inj. : 1 ul  
Signal Phase : Rxi-1ms  
Signal Info : 20M x 0.18mm x 0.18um

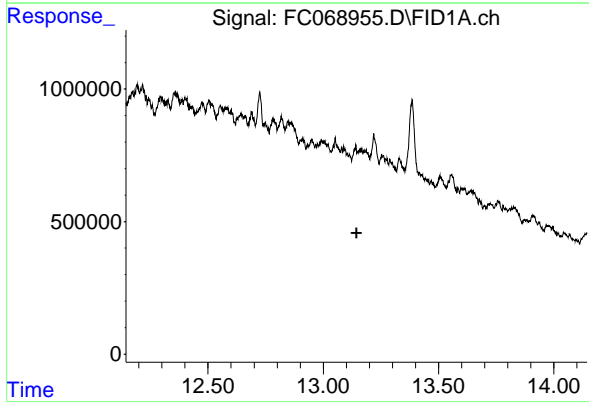




#9 ortho-Terphenyl (SURR)

R.T.: 0.000 min  
Exp R.T. : 11.711 min  
Response: 0  
Conc: N.D.

Instrument :  
FID\_C  
ClientSampleId :  
LAW-25-0074DL



#12 1-chlorooctadecane (SURR)

R.T.: 0.000 min  
Exp R.T. : 13.144 min  
Response: 0  
Conc: N.D.