

Data Path : Z:\pestpcbsrv\HPCHEM1\FID\_C\Data\FC052319A\  
 Data File : FC041434.D  
 Signal(s) : FID1A.CH  
 Acq On : 23 May 2019 14:19  
 Operator : DD\AJ  
 Sample : 20 PPM ALIPHATIC HC STD  
 Misc :  
 ALS Vial : 2 Sample Multiplier: 1

Integration File: autoint1.e  
 Quant Time: May 24 01:49:31 2019  
 Quant Method : Z:\pestpcbsrv\HPCHEM1\FID\_C\Method\Alaphatic EPH 051519.M  
 Quant Title : GC Extractables  
 QLast Update : Wed May 15 16:14:00 2019  
 Response via : Initial Calibration  
 Integrator: ChemStation 6890 Scale Mode: Large solvent peaks clipped

Volume Inj. : 1 ul  
 Signal Phase : Rxi-1ms  
 Signal Info : 20M x 0.18mm x 0.18um

Compound	R.T.	Response	Conc Units
-----			
System Monitoring Compounds			
9) S ortho-Terphenyl (SURR)	11.704	1979100	19.615 ug/ml
Spiked Amount	50.000	Recovery	= 39.23%
12) S 1-chlorooctadecane (S...	13.128	1564043	19.699 ug/ml
Spiked Amount	50.000	Recovery	= 39.40%
Target Compounds			
1) T n-Nonane (C9)	3.480	1664749	19.397 ug/ml
2) T n-Decane (C10)	4.551	1709808	19.618 ug/ml
3) T A~Naphthalene (C11.7)	6.141	2001915	19.488 ug/ml
4) T n-Dodecane (C12)	6.563	1733550	19.663 ug/ml
5) T A~2-methylnaphthalene...	7.193	2017552	19.509 ug/ml
6) T n-Tetradecane (C14)	8.350	1764438	19.682 ug/ml
7) T n-Hexadecane (C16)	9.943	1775035	19.675 ug/ml
8) T n-Octadecane (C18)	11.379	1783132	19.736 ug/ml
10) T n-Eicosane (C20)	12.684	1805949	19.842 ug/ml
11) T n-Heneicosane (C21)	13.294	1793968	19.799 ug/ml
13) T n-Docosane (C22)	13.879	1811754	20.000 ug/ml
14) T n-Tetracosane (C24)	14.978	1831246	20.140 ug/ml
15) T n-Hexacosane (C26)	15.996	1879987	20.714 ug/ml
16) T n-Octacosane (C28)	16.944	1923087	21.004 ug/ml
17) T n-Tricontane (C30)	17.828	1917015	21.337 ug/ml
18) T n-Dotriacontane (C32)	18.659	1786761	21.353 ug/ml
19) T n-Tetratriacontane (C34)	19.440	1507473	21.087 ug/ml
20) T n-Hexatriacontane (C36)	20.179	1330350	20.878 ug/ml
21) T n-Octatriacontane (C38)	20.930	1227407	20.340 ug/ml
22) T n-Tetracontane (C40)	21.875	1120418	19.043 ug/ml
-----			

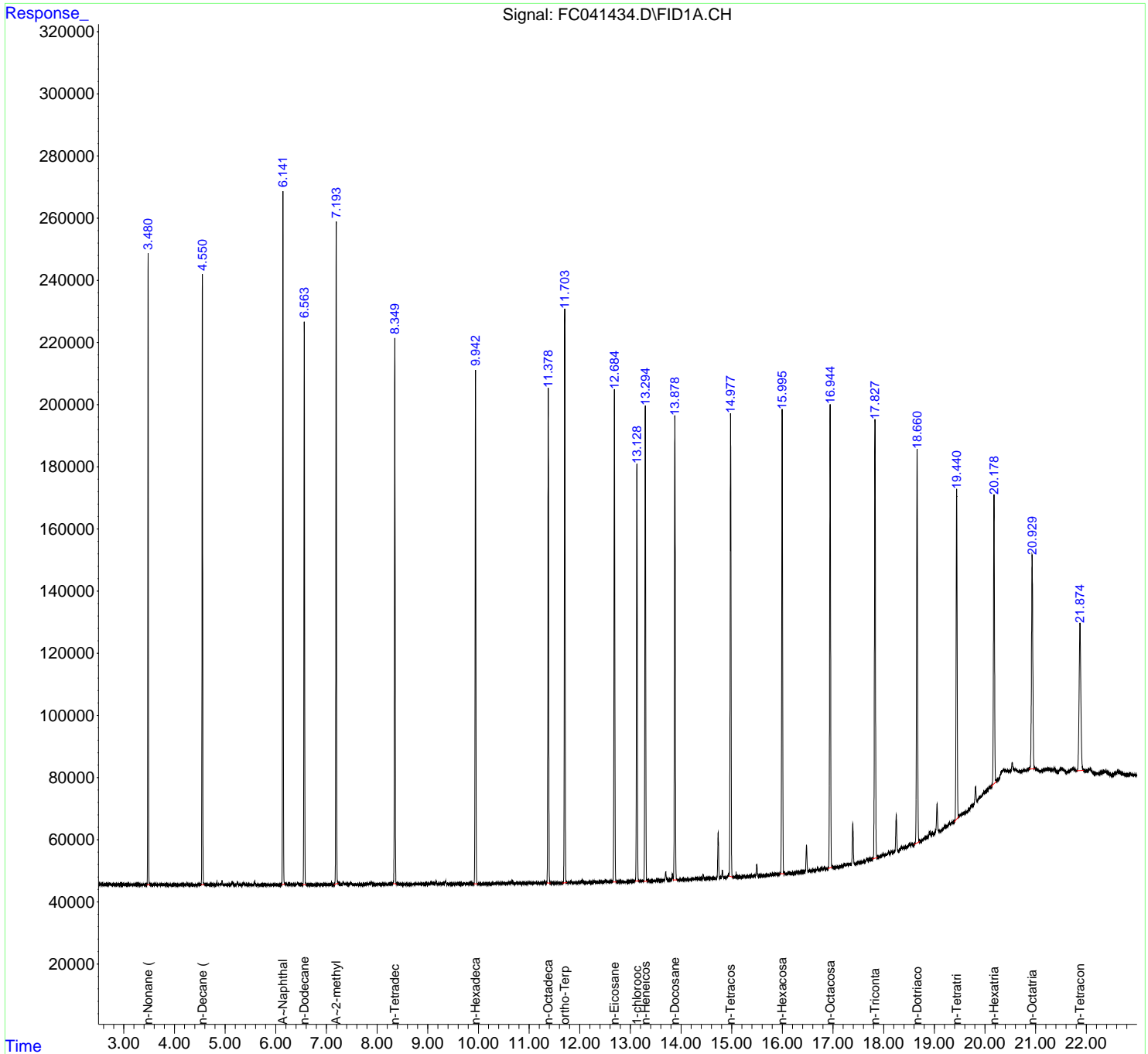
(f)=RT Delta > 1/2 Window

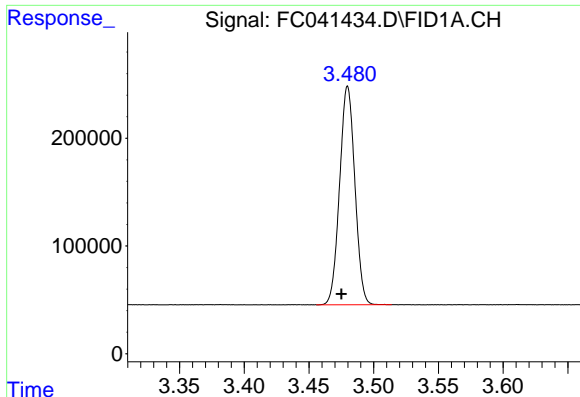
(m)=manual int.

Data Path : Z:\pestpcbsrv\HPCHEM1\FID\_C\Data\FC052319AL\  
 Data File : FC041434.D  
 Signal(s) : FID1A.CH  
 Acq On : 23 May 2019 14:19  
 Operator : DD\AJ  
 Sample : 20 PPM ALIPHATIC HC STD  
 Misc :  
 ALS Vial : 2 Sample Multiplier: 1

Integration File: autoint1.e  
 Quant Time: May 24 01:49:31 2019  
 Quant Method : Z:\pestpcbsrv\HPCHEM1\FID\_C\Method\Aliphatic EPH 051519.M  
 Quant Title : GC Extractables  
 QLast Update : Wed May 15 16:14:00 2019  
 Response via : Initial Calibration  
 Integrator: ChemStation 6890 Scale Mode: Large solvent peaks clipped

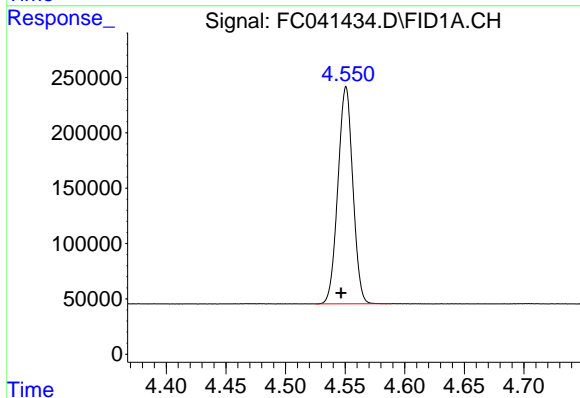
Volume Inj. : 1 ul  
 Signal Phase : Rxi-1ms  
 Signal Info : 20M x 0.18mm x 0.18um





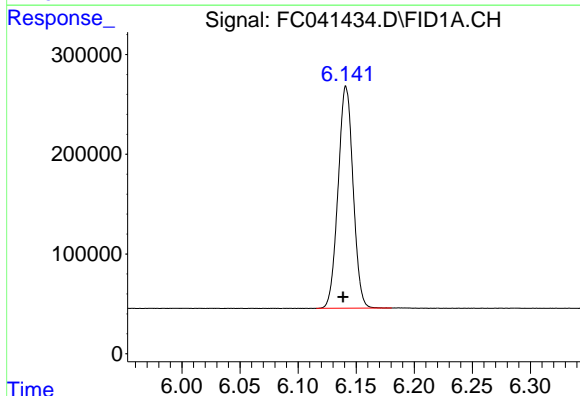
#1 n-Nonane (C9)

R.T.: 3.480 min  
Delta R.T.: 0.005 min  
Response: 1664749  
Conc: 19.40 ug/ml



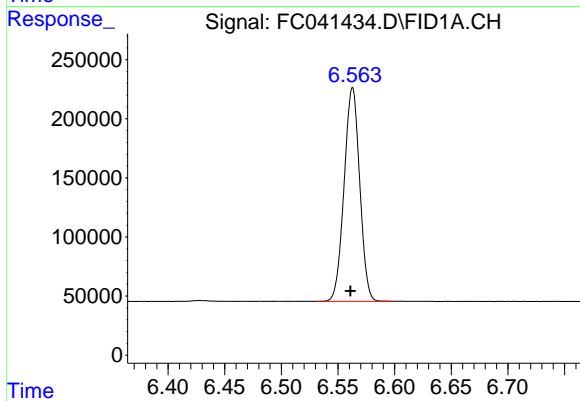
#2 n-Decane (C10)

R.T.: 4.551 min  
Delta R.T.: 0.004 min  
Response: 1709808  
Conc: 19.62 ug/ml



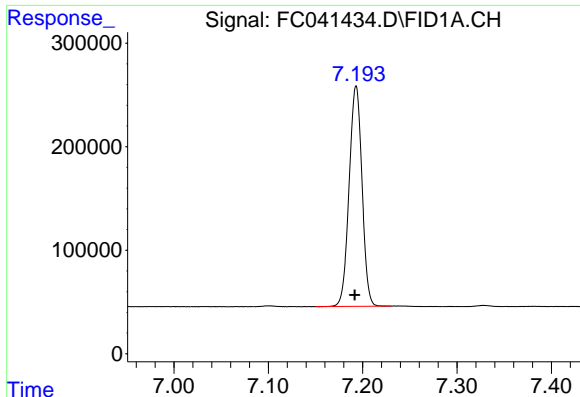
#3 A~Naphthalene (C11.7)

R.T.: 6.141 min  
Delta R.T.: 0.003 min  
Response: 2001915  
Conc: 19.49 ug/ml



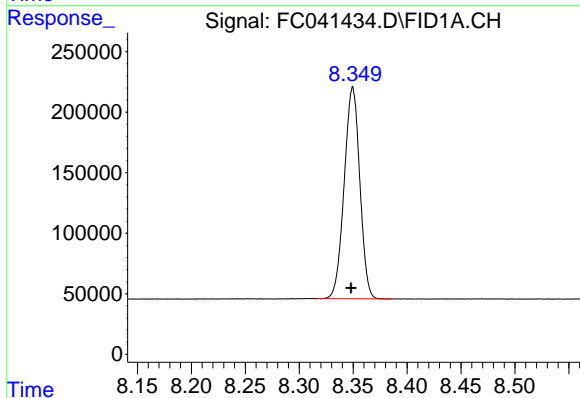
#4 n-Dodecane (C12)

R.T.: 6.563 min  
Delta R.T.: 0.002 min  
Response: 1733550  
Conc: 19.66 ug/ml



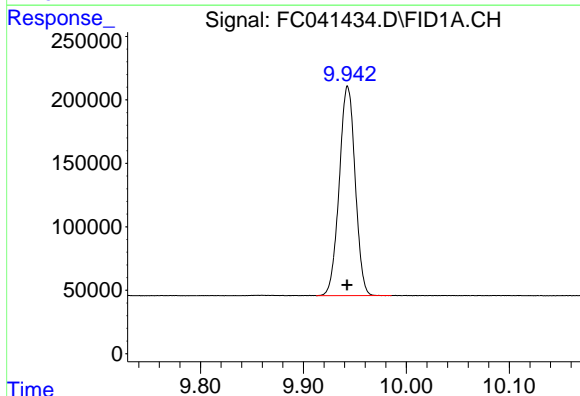
#5 A~2-methylnaphthalene (C12.89)

R.T.: 7.193 min  
Delta R.T.: 0.001 min  
Response: 2017552  
Conc: 19.51 ug/ml



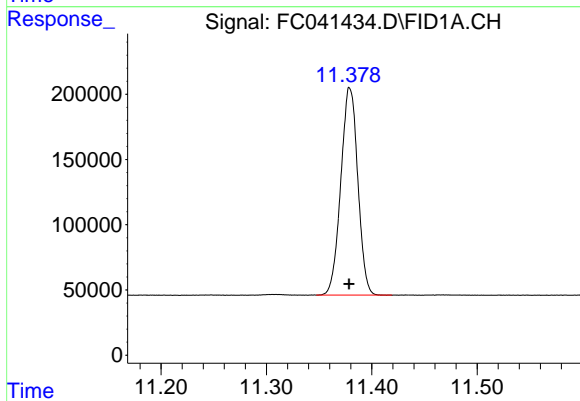
#6 n-Tetradecane (C14)

R.T.: 8.350 min  
Delta R.T.: 0.002 min  
Response: 1764438  
Conc: 19.68 ug/ml



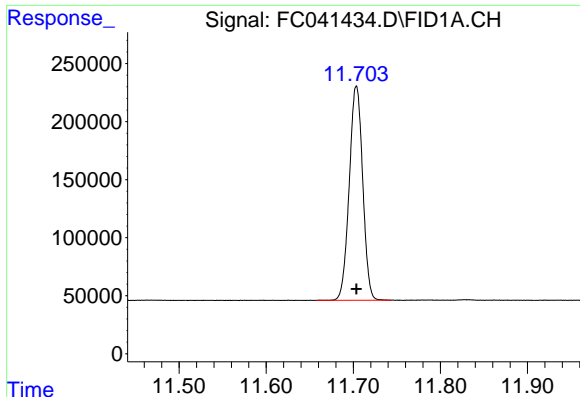
#7 n-Hexadecane (C16)

R.T.: 9.943 min  
Delta R.T.: 0.000 min  
Response: 1775035  
Conc: 19.68 ug/ml



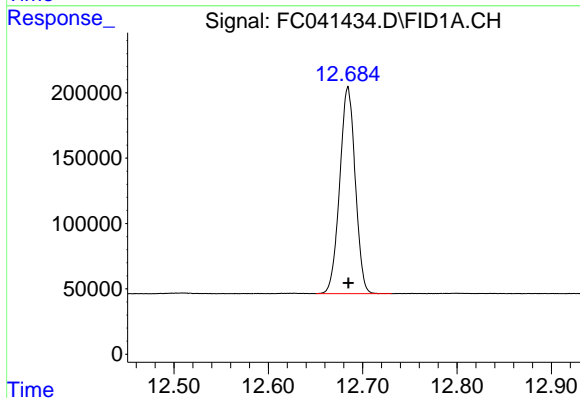
#8 n-Octadecane (C18)

R.T.: 11.379 min  
Delta R.T.: 0.000 min  
Response: 1783132  
Conc: 19.74 ug/ml



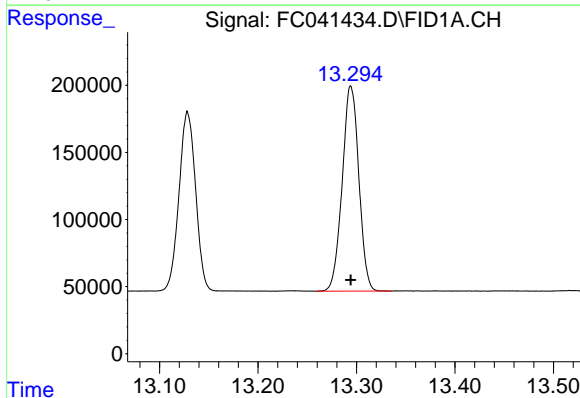
#9 ortho-Terphenyl (SURR)

R.T.: 11.704 min  
 Delta R.T.: 0.000 min  
 Response: 1979100  
 Conc: 19.62 ug/ml



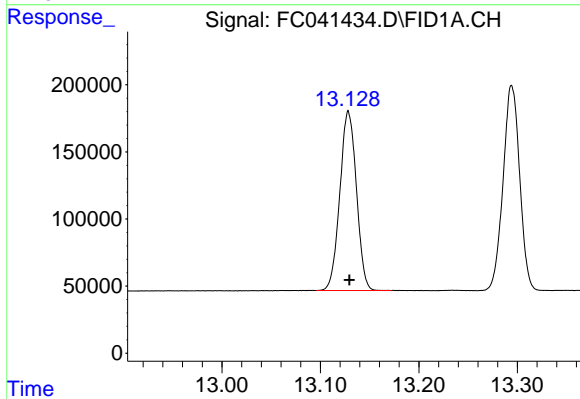
#10 n-Eicosane (C20)

R.T.: 12.684 min  
 Delta R.T.: 0.000 min  
 Response: 1805949  
 Conc: 19.84 ug/ml



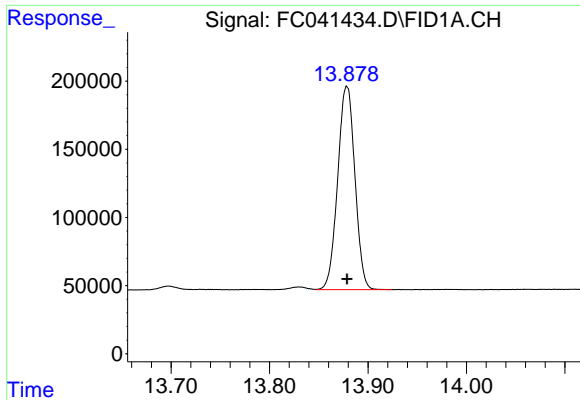
#11 n-Heneicosane (C21)

R.T.: 13.294 min  
 Delta R.T.: 0.000 min  
 Response: 1793968  
 Conc: 19.80 ug/ml



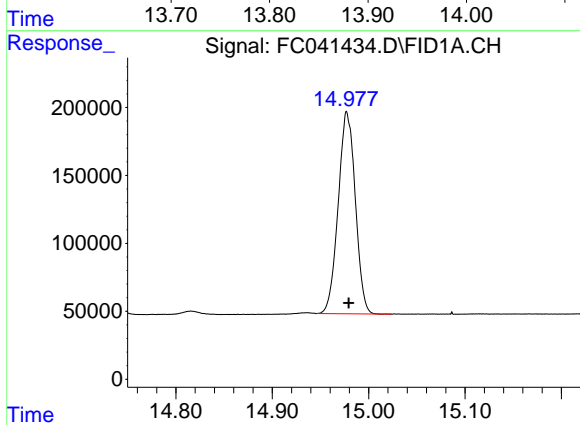
#12 1-chlorooctadecane (SURR)

R.T.: 13.128 min  
 Delta R.T.: -0.001 min  
 Response: 1564043  
 Conc: 19.70 ug/ml



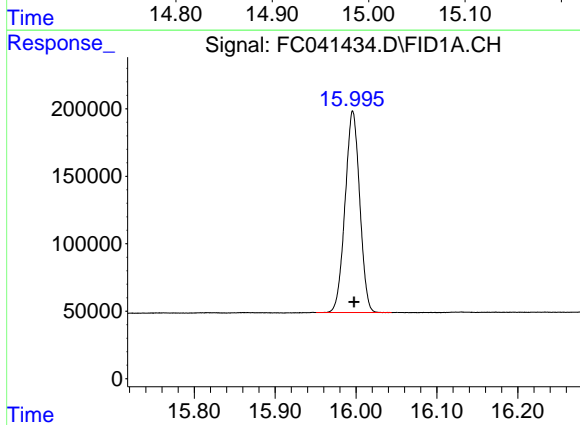
#13 n-Docosane (C22)

R.T.: 13.879 min  
Delta R.T.: 0.000 min  
Response: 1811754  
Conc: 20.00 ug/ml



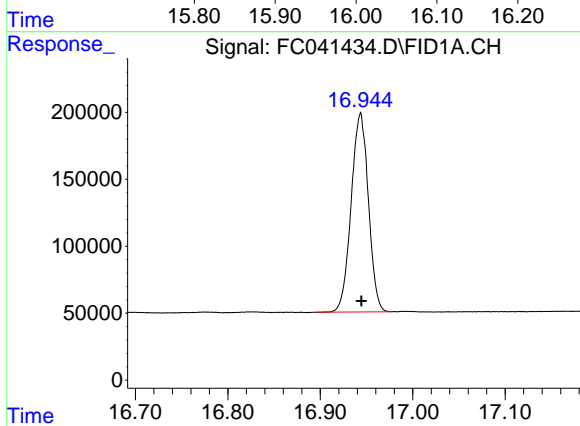
#14 n-Tetracosane (C24)

R.T.: 14.978 min  
Delta R.T.: -0.002 min  
Response: 1831246  
Conc: 20.14 ug/ml



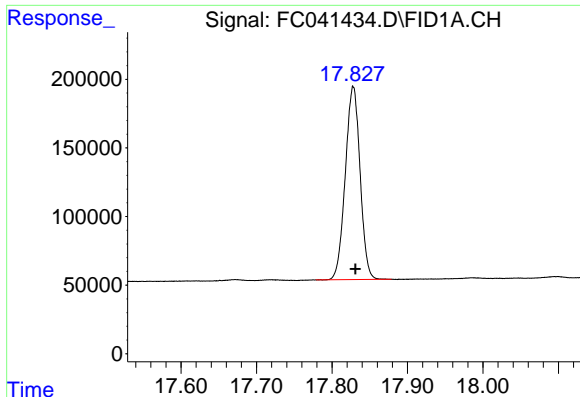
#15 n-Hexacosane (C26)

R.T.: 15.996 min  
Delta R.T.: -0.002 min  
Response: 1879987  
Conc: 20.71 ug/ml



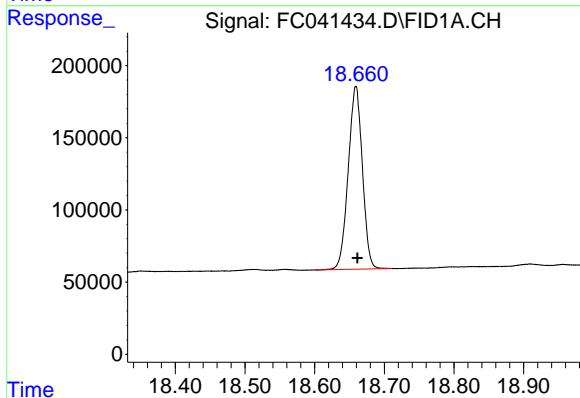
#16 n-Octacosane (C28)

R.T.: 16.944 min  
Delta R.T.: -0.001 min  
Response: 1923087  
Conc: 21.00 ug/ml



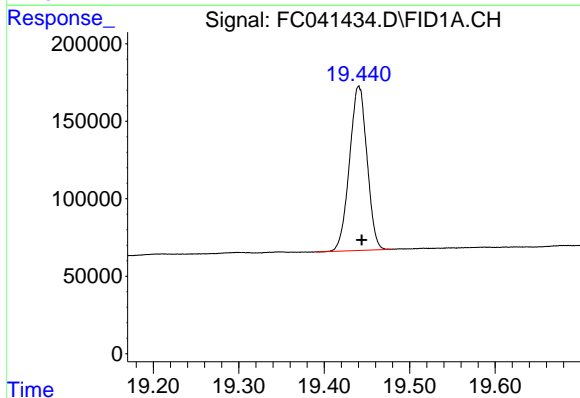
#17 n-Tricontane (C30)

R.T.: 17.828 min  
Delta R.T.: -0.003 min  
Response: 1917015  
Conc: 21.34 ug/ml



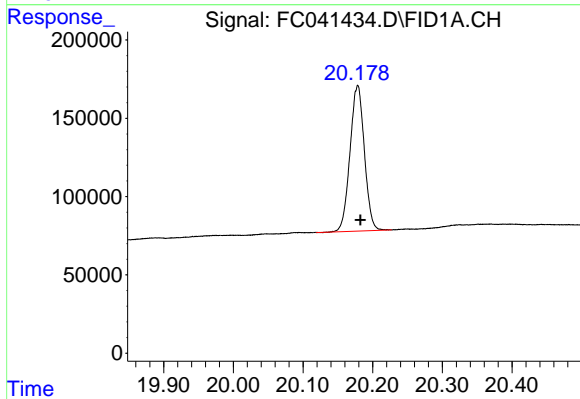
#18 n-Dotriacontane (C32)

R.T.: 18.659 min  
Delta R.T.: -0.002 min  
Response: 1786761  
Conc: 21.35 ug/ml



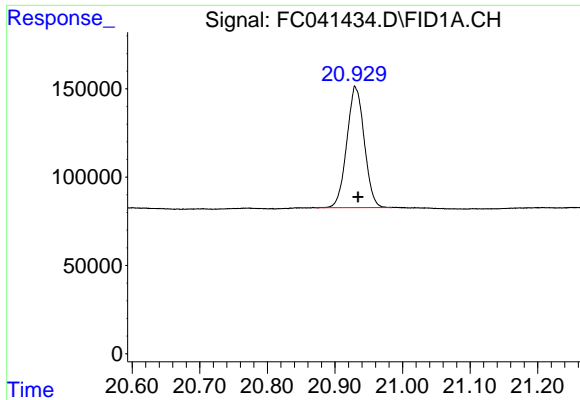
#19 n-Tetratriacontane (C34)

R.T.: 19.440 min  
Delta R.T.: -0.003 min  
Response: 1507473  
Conc: 21.09 ug/ml



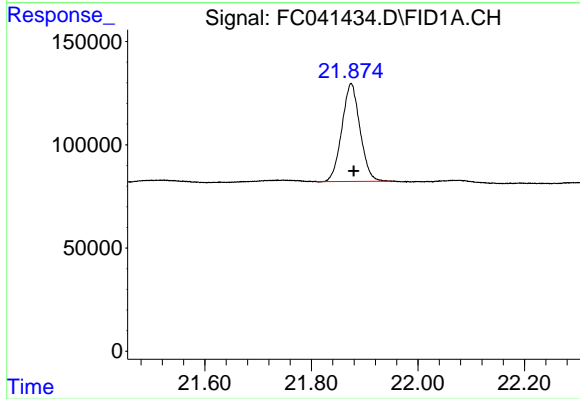
#20 n-Hexatriacontane (C36)

R.T.: 20.179 min  
Delta R.T.: -0.004 min  
Response: 1330350  
Conc: 20.88 ug/ml



#21 n-Octatriacontane (C38)

R.T.: 20.930 min  
Delta R.T.: -0.004 min  
Response: 1227407  
Conc: 20.34 ug/ml



#22 n-Tetracontane (C40)

R.T.: 21.875 min  
Delta R.T.: -0.005 min  
Response: 1120418  
Conc: 19.04 ug/ml