

Data Path : Z:\pestpcbsrv\HPCHEM1\FID\_C\Data\FC052419AL\  
 Data File : FC041486.D  
 Signal(s) : FID1A.CH  
 Acq On : 25 May 2019 00:20  
 Operator : DD\AJ  
 Sample : K2643-09  
 Misc :  
 ALS Vial : 18 Sample Multiplier: 1

Integration File: autoint1.e  
 Quant Time: May 25 00:57:37 2019  
 Quant Method : Z:\pestpcbsrv\HPCHEM1\FID\_C\Method\Alaphatic EPH 051519.M  
 Quant Title : GC Extractables  
 QLast Update : Wed May 15 16:14:00 2019  
 Response via : Initial Calibration  
 Integrator: ChemStation 6890 Scale Mode: Large solvent peaks clipped

Volume Inj. : 1 ul  
 Signal Phase : Rxi-1ms  
 Signal Info : 20M x 0.18mm x 0.18um

Compound	R.T.	Response	Conc Units
-----			
System Monitoring Compounds			
9) S ortho-Terphenyl (SURR)	11.706	3822781	37.888 ug/ml
Spiked Amount	50.000	Recovery	= 75.78%
12) S 1-chlorooctadecane (S...	13.131	2954696	37.215 ug/ml
Spiked Amount	50.000	Recovery	= 74.43%
Target Compounds			
14) T n-Tetracosane (C24)	14.968	285122	3.136 ug/ml
16) T n-Octacosane (C28)	16.946	268549	2.933 ug/ml
17) T n-Tricontane (C30)	17.832	533525	5.938 ug/ml
18) T n-Dotriacontane (C32)	18.664	461361	5.514 ug/ml
19) T n-Tetratriacontane (C34)	19.447	272373	3.810 ug/ml
20) T n-Hexatriacontane (C36)	20.183	243950	3.828 ug/ml
-----			

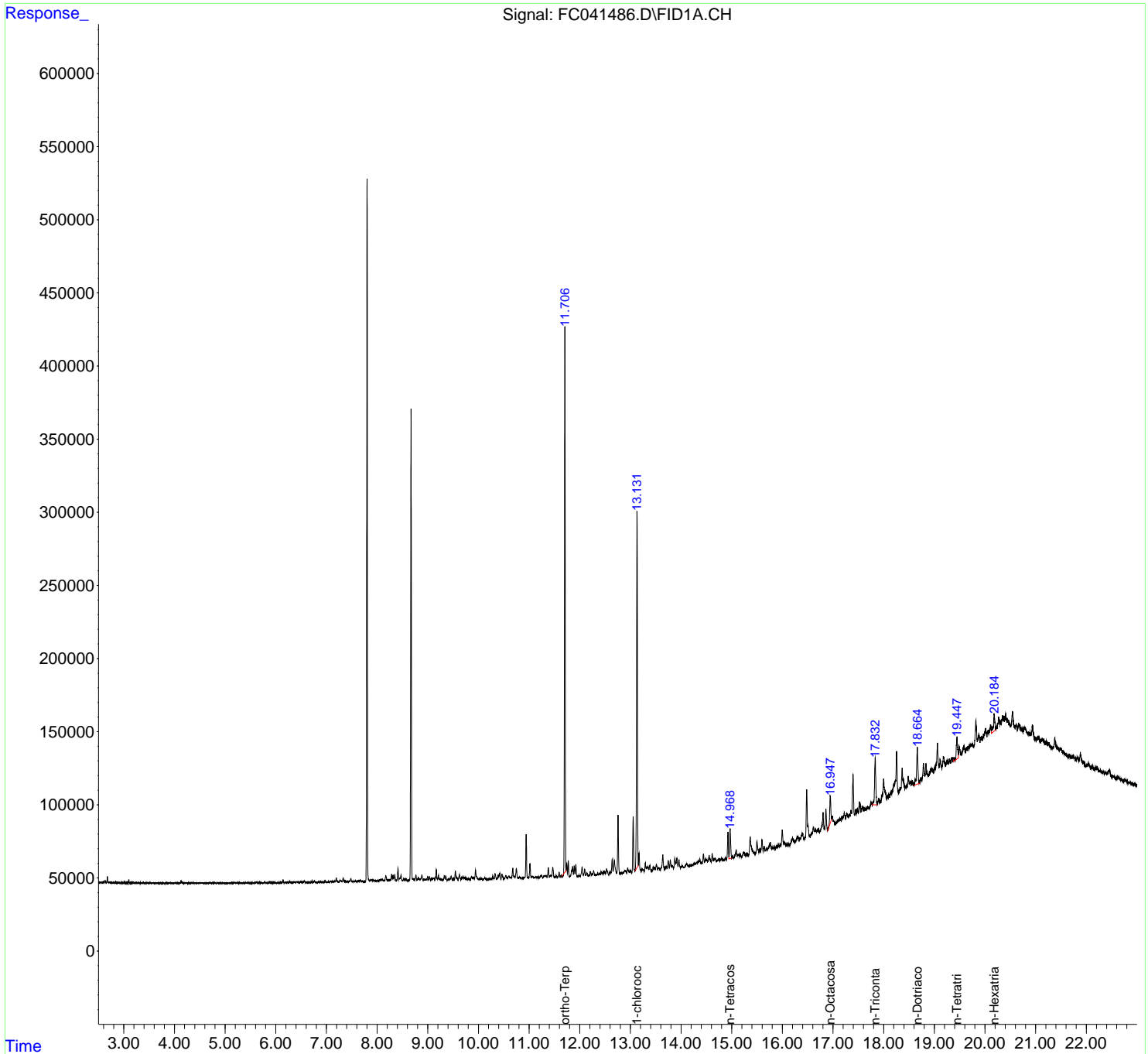
(f)=RT Delta > 1/2 Window

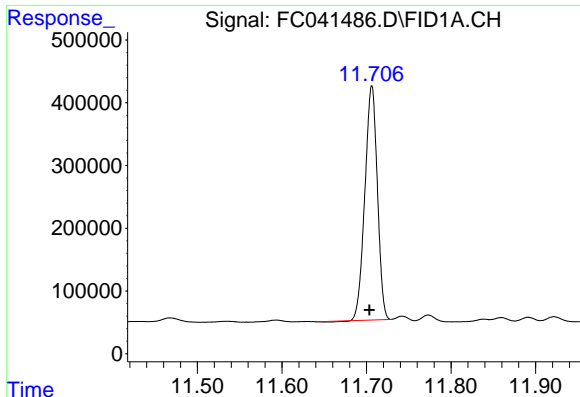
(m)=manual int.

Data Path : Z:\pestpcbsrv\HPCHEM1\FID\_C\Data\FC052419AL\  
 Data File : FC041486.D  
 Signal(s) : FID1A.CH  
 Acq On : 25 May 2019 00:20  
 Operator : DD\AJ  
 Sample : K2643-09  
 Misc :  
 ALS Vial : 18 Sample Multiplier: 1

Integration File: autoint1.e  
 Quant Time: May 25 00:57:37 2019  
 Quant Method : Z:\pestpcbsrv\HPCHEM1\FID\_C\Method\Alaphatic EPH 051519.M  
 Quant Title : GC Extractables  
 QLast Update : Wed May 15 16:14:00 2019  
 Response via : Initial Calibration  
 Integrator: ChemStation 6890 Scale Mode: Large solvent peaks clipped

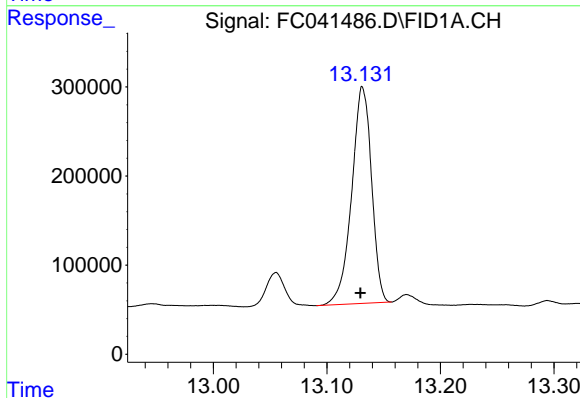
Volume Inj. : 1 ul  
 Signal Phase : Rxi-1ms  
 Signal Info : 20M x 0.18mm x 0.18um





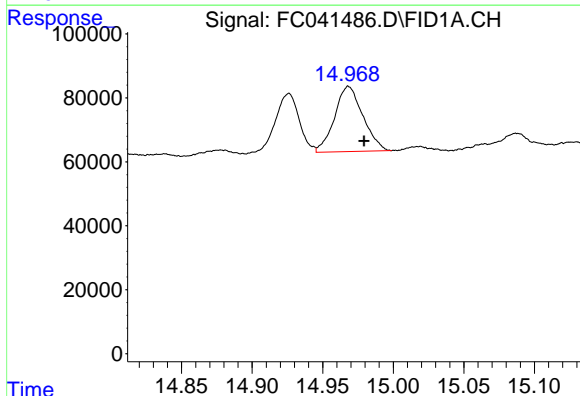
#9 ortho-Terphenyl (SURR)

R.T.: 11.706 min  
 Delta R.T.: 0.003 min  
 Response: 3822781  
 Conc: 37.89 ug/ml



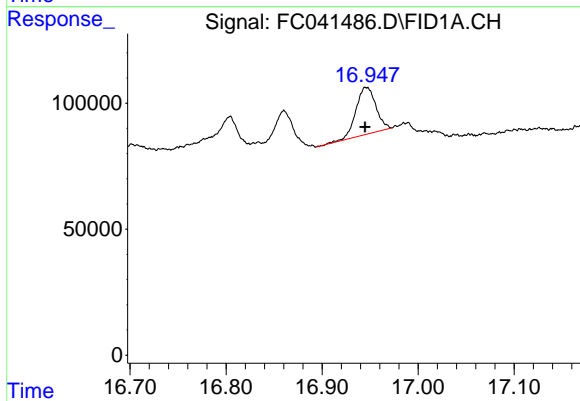
#12 1-chlorooctadecane (SURR)

R.T.: 13.131 min  
 Delta R.T.: 0.002 min  
 Response: 2954696  
 Conc: 37.21 ug/ml



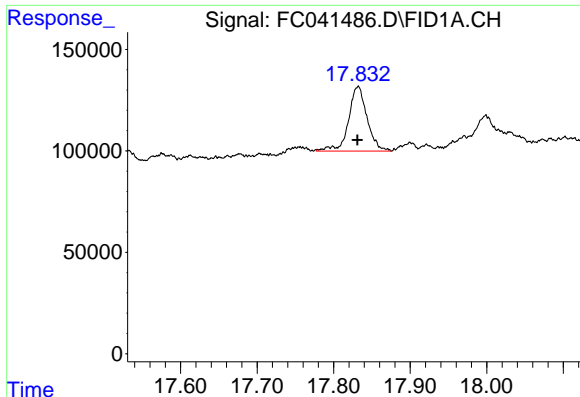
#14 n-Tetracosane (C24)

R.T.: 14.968 min  
 Delta R.T.: -0.011 min  
 Response: 285122  
 Conc: 3.14 ug/ml



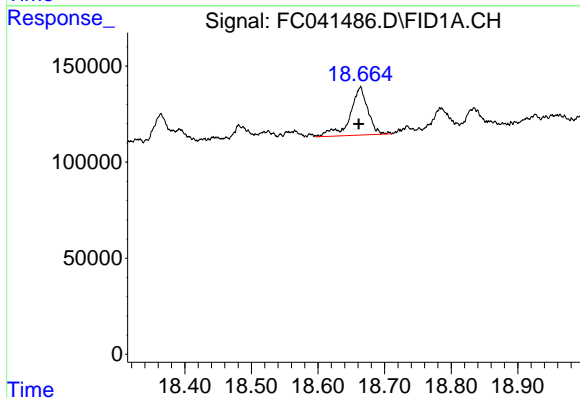
#16 n-Octacosane (C28)

R.T.: 16.946 min  
 Delta R.T.: 0.001 min  
 Response: 268549  
 Conc: 2.93 ug/ml



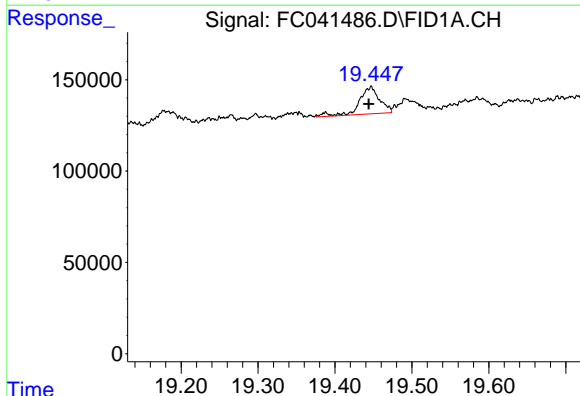
#17 n-Tricontane (C30)

R.T.: 17.832 min  
 Delta R.T.: 0.001 min  
 Response: 533525  
 Conc: 5.94 ug/ml



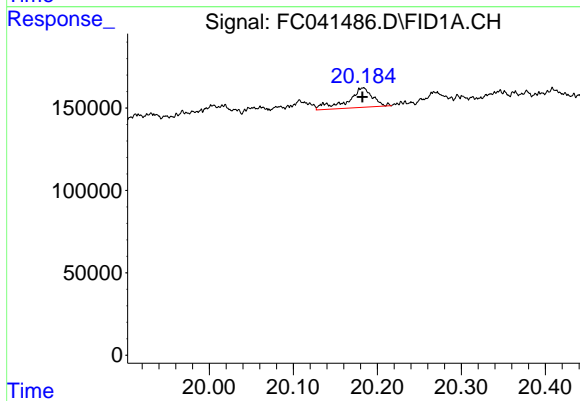
#18 n-Dotriacontane (C32)

R.T.: 18.664 min  
 Delta R.T.: 0.002 min  
 Response: 461361  
 Conc: 5.51 ug/ml



#19 n-Tetratriacontane (C34)

R.T.: 19.447 min  
 Delta R.T.: 0.003 min  
 Response: 272373  
 Conc: 3.81 ug/ml



#20 n-Hexatriacontane (C36)

R.T.: 20.183 min  
 Delta R.T.: 0.000 min  
 Response: 243950  
 Conc: 3.83 ug/ml