

Data Path : Z:\pestpcbsrv\HPCHEM1\FID_C\Data\FC052920AL\
Data File : FC047662.D
Signal(s) : FID1A.CH
Acq On : 30 May 2020 5:16
Operator : DD\AJ
Sample : L2790-05
Misc :
ALS Vial : 25 Sample Multiplier: 1

Integration File: autoint1.e
Quant Time: May 30 07:16:30 2020
Quant Method : Z:\pestpcbsrv\HPCHEM1\FID_C\Method\Alaphatic EPH 050820.M
Quant Title : GC Extractables
QLast Update : Fri May 08 16:49:27 2020
Response via : Initial Calibration
Integrator: ChemStation 6890 Scale Mode: Large solvent peaks clipped

Volume Inj. : 1 ul
Signal Phase : Rxi-1ms
Signal Info : 20M x 0.18mm x 0.18um

Compound	R.T.	Response	Conc Units

System Monitoring Compounds			
12) S 1-chlorooctadecane (S...	13.152	1551617	15.820 ug/ml
Spiked Amount	50.000	Recovery	= 31.64%

Target Compounds

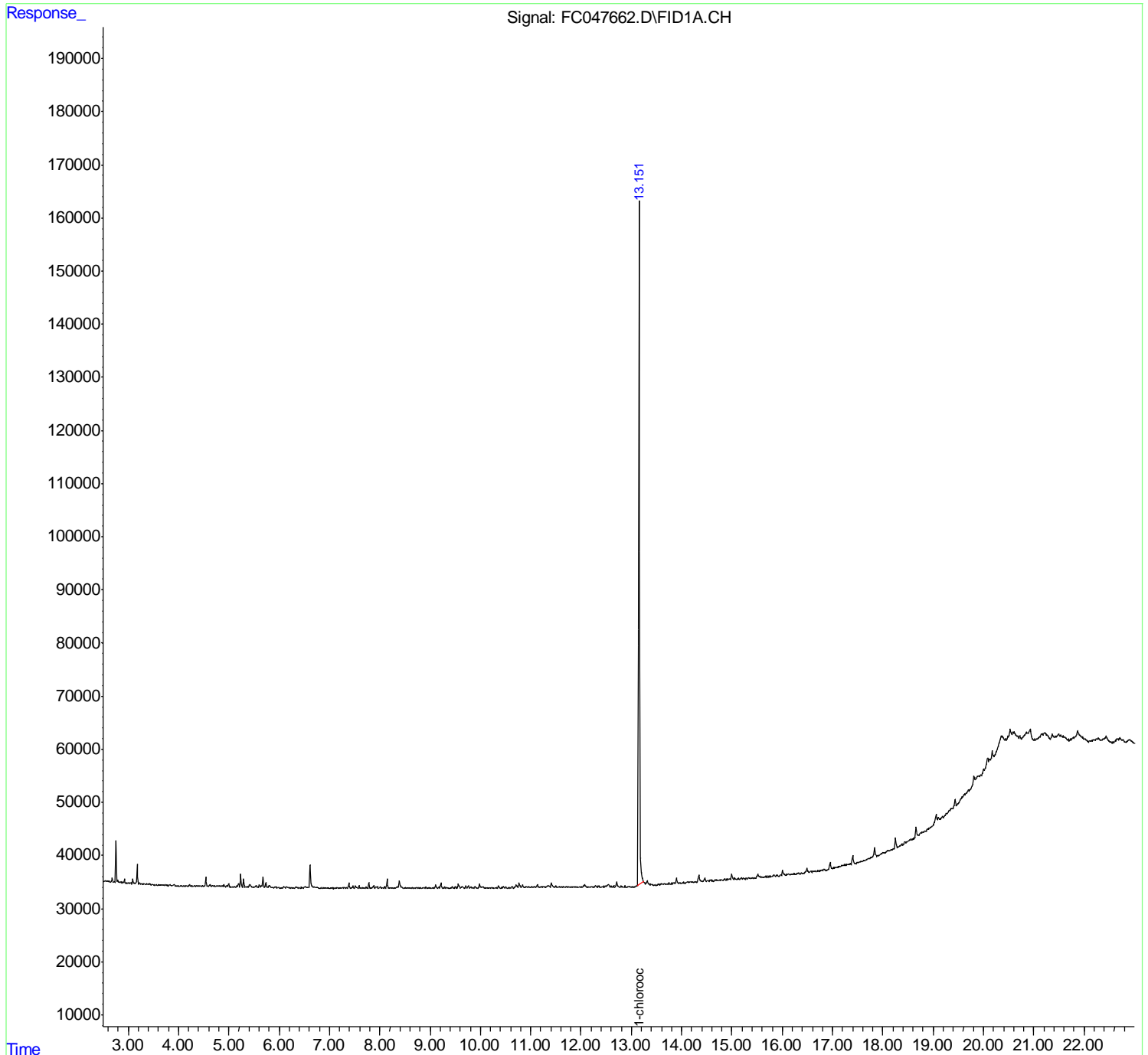
(f)=RT Delta > 1/2 Window

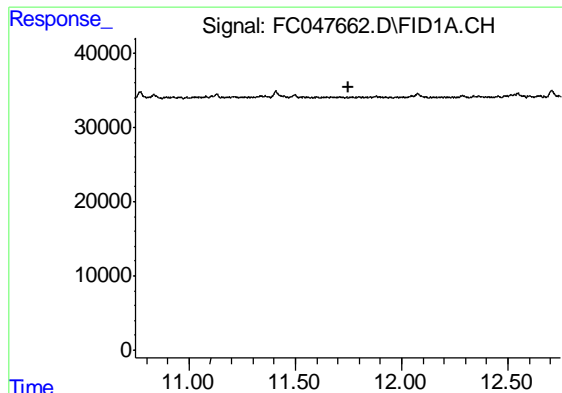
(m)=manual int.

Data Path : Z:\pestpcbsrv\HPCHEM1\FID_C\Data\FC052920AL\
Data File : FC047662.D
Signal(s) : FID1A.CH
Acq On : 30 May 2020 5:16
Operator : DD\AJ
Sample : L2790-05
Misc :
ALS Vial : 25 Sample Multiplier: 1

Integration File: autoint1.e
Quant Time: May 30 07:16:30 2020
Quant Method : Z:\pestpcbsrv\HPCHEM1\FID_C\Method\Alaphatic EPH 050820.M
Quant Title : GC Extractables
QLast Update : Fri May 08 16:49:27 2020
Response via : Initial Calibration
Integrator: ChemStation 6890 Scale Mode: Large solvent peaks clipped

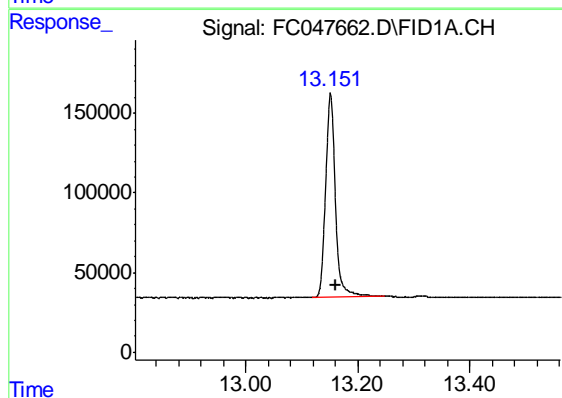
Volume Inj. : 1 ul
Signal Phase : Rxi-1ms
Signal Info : 20M x 0.18mm x 0.18um





#9 ortho-Terphenyl (SURR)

R.T.: 0.000 min
Exp R.T. : 11.748 min
Response: 0
Conc: N.D.



#12 1-chlorooctadecane (SURR)

R.T.: 13.152 min
Delta R.T.: -0.010 min
Response: 1551617
Conc: 15.82 ug/ml