

Data Path : Z:\pestpcbsrv\HPCHEM1\FID\_C\Data\FC060221AL\  
 Data File : FC053957.D  
 Signal(s) : FID1A.CH  
 Acq On : 02 Jun 2021 13:27  
 Operator : DD\AJ  
 Sample : M2565-01  
 Misc :  
 ALS Vial : 3 Sample Multiplier: 1

Integration File: autoint1.e  
 Quant Time: Jun 03 02:55:25 2021  
 Quant Method : Z:\pestpcbsrv\HPCHEM1\FID\_C\Method\Alaphatic EPH 052721.M  
 Quant Title : GC Extractables  
 QLast Update : Fri May 28 09:04:47 2021  
 Response via : Initial Calibration  
 Integrator: ChemStation 6890 Scale Mode: Large solvent peaks clipped

Volume Inj. : 1 ul  
 Signal Phase : Rxi-1ms  
 Signal Info : 20M x 0.18mm x 0.18um

Compound	R.T.	Response	Conc Units
-----			
System Monitoring Compounds			
9) S ortho-Terphenyl (SURR)	11.351	5493443	39.345 ug/ml
Spiked Amount	50.000	Recovery	= 78.69%
12) S 1-chlorooctadecane (S...	12.797	4473647	39.901 ug/ml
Spiked Amount	50.000	Recovery	= 79.80%

Target Compounds

-----

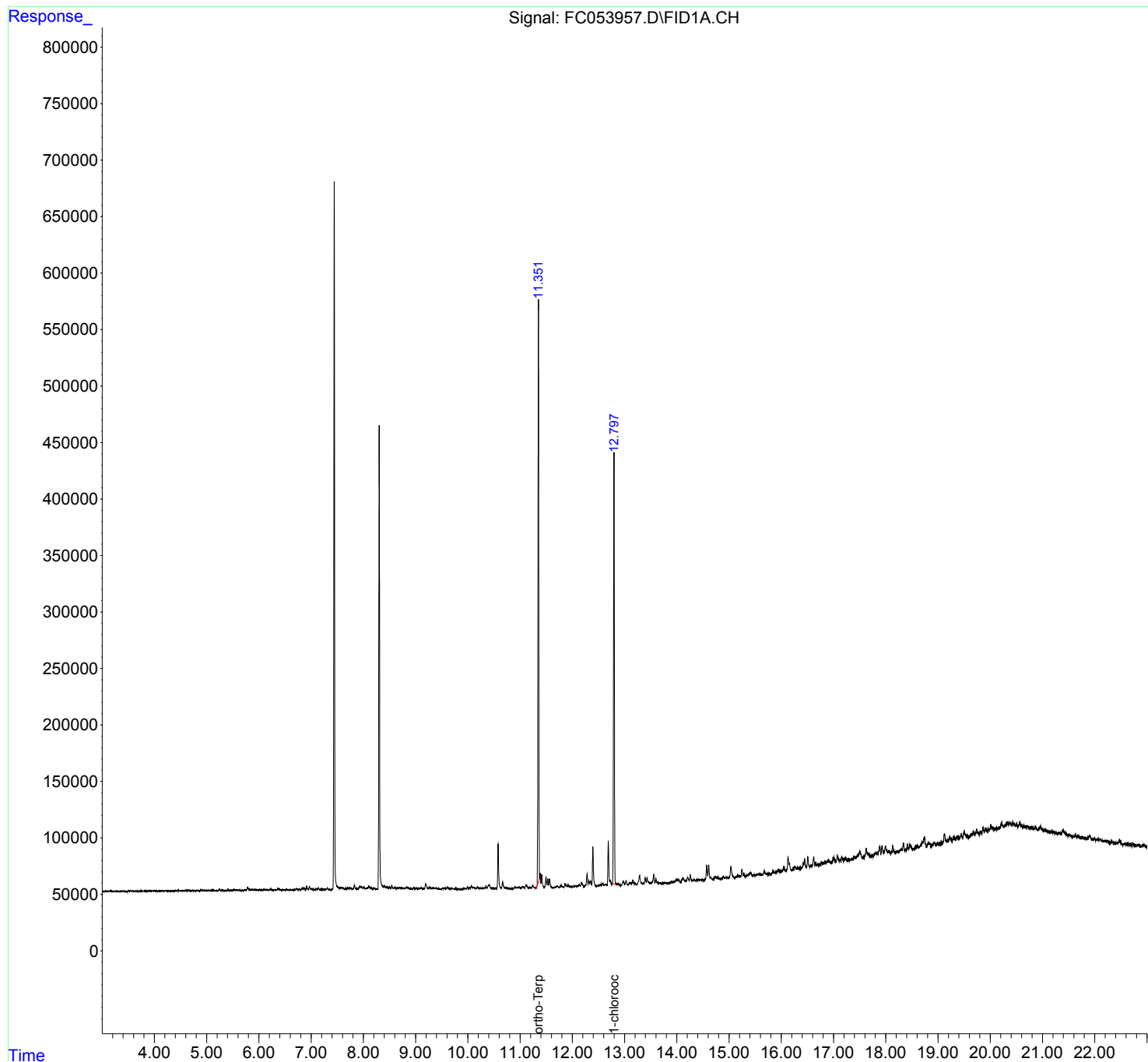
(f)=RT Delta > 1/2 Window

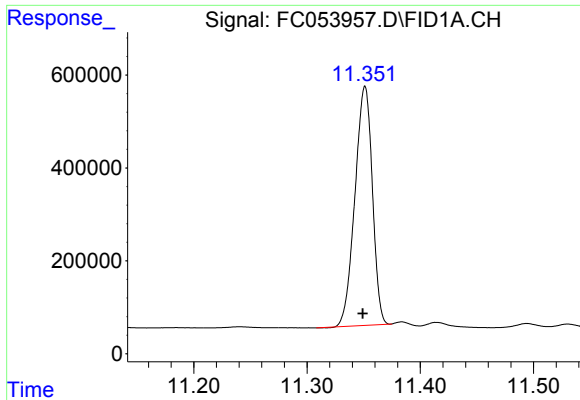
(m)=manual int.

Data Path : Z:\pestpcbsrv\HPCHEM1\FID\_C\Data\FC060221AL\  
Data File : FC053957.D  
Signal(s) : FID1A.CH  
Acq On : 02 Jun 2021 13:27  
Operator : DD\AJ  
Sample : M2565-01  
Misc :  
ALS Vial : 3 Sample Multiplier: 1

Integration File: autoint1.e  
Quant Time: Jun 03 02:55:25 2021  
Quant Method : Z:\pestpcbsrv\HPCHEM1\FID\_C\Method\Alaphatic EPH 052721.M  
Quant Title : GC Extractables  
QLast Update : Fri May 28 09:04:47 2021  
Response via : Initial Calibration  
Integrator: ChemStation 6890 Scale Mode: Large solvent peaks clipped

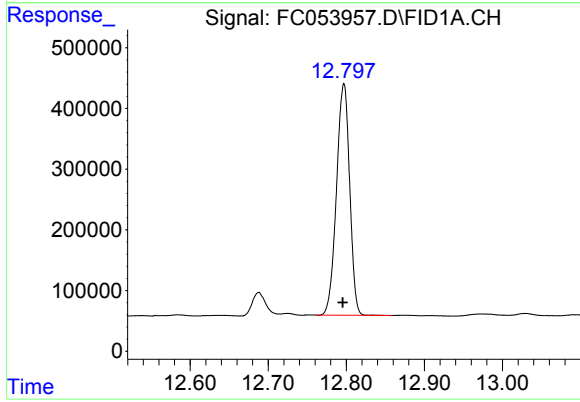
Volume Inj. : 1 ul  
Signal Phase : Rxi-1ms  
Signal Info : 20M x 0.18mm x 0.18um





#9 ortho-Terphenyl (SURR)

R.T.: 11.351 min  
Delta R.T.: 0.002 min  
Response: 5493443  
Conc: 39.34 ug/ml



#12 1-chlorooctadecane (SURR)

R.T.: 12.797 min  
Delta R.T.: 0.001 min  
Response: 4473647  
Conc: 39.90 ug/ml