

Data Path : Z:\pestpcbsrv\HPCHEM1\FID_C\Data\FC060222AL\
 Data File : FC060063.D
 Signal(s) : FID1A.CH
 Acq On : 02 Jun 2022 20:27
 Operator : UA/NP
 Sample : N3084-11DL 50X
 Misc :
 ALS Vial : 16 Sample Multiplier: 1

Instrument :
 FID_C
 ClientSampleId :
 D-17-4-SW-SB-25(9.5-10)DL

Integration File: sample.E
 Quant Time: Jun 03 01:27:05 2022
 Quant Method : Z:\pestpcbsrv\HPCHEM1\FID_C\Method\Aliphatic EPH 052722.M
 Quant Title : GC Extractables
 QLast Update : Sat May 28 08:22:04 2022
 Response via : Initial Calibration
 Integrator: ChemStation 6890 Scale Mode: Large solvent peaks clipped

Volume Inj. : 1 ul
 Signal Phase : Rxi-1ms
 Signal Info : 20M x 0.18mm x 0.18um

Compound	R.T.	Response	Conc Units

System Monitoring Compounds			
Target Compounds			

(f)=RT Delta > 1/2 Window

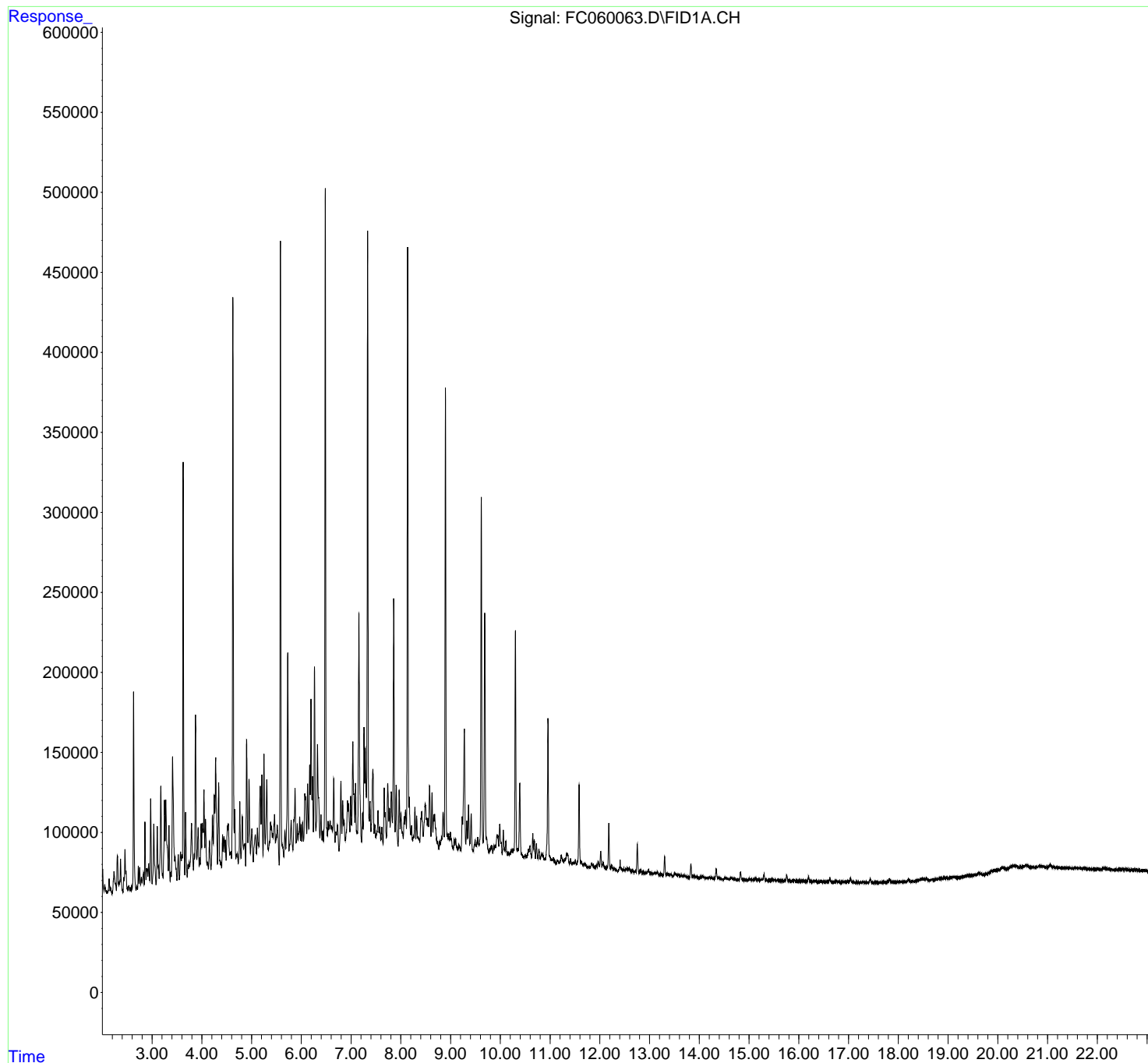
(m)=manual int.

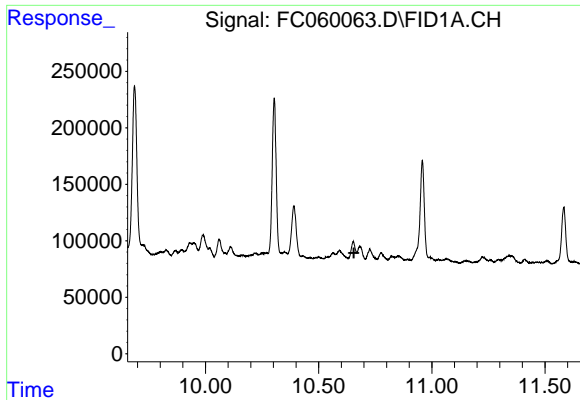
Data Path : Z:\pestpcbsrv\HPCHEM1\FID_C\Data\FC060222AL\
Data File : FC060063.D
Signal(s) : FID1A.CH
Acq On : 02 Jun 2022 20:27
Operator : UA/NP
Sample : N3084-11DL 50X
Misc :
ALS Vial : 16 Sample Multiplier: 1

Instrument :
FID_C
ClientSampleId :
D-17-4-SW-SB-25(9.5-10)DL

Integration File: sample.E
Quant Time: Jun 03 01:27:05 2022
Quant Method : Z:\pestpcbsrv\HPCHEM1\FID_C\Method\Aliphatic EPH 052722.M
Quant Title : GC Extractables
QLast Update : Sat May 28 08:22:04 2022
Response via : Initial Calibration
Integrator: ChemStation 6890 Scale Mode: Large solvent peaks clipped

Volume Inj. : 1 ul
Signal Phase : Rxi-1ms
Signal Info : 20M x 0.18mm x 0.18um

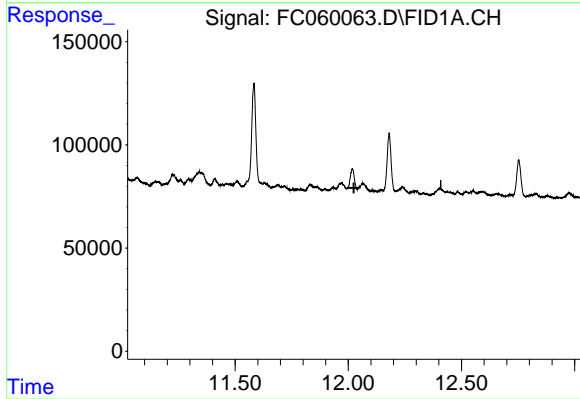




#9 ortho-Terphenyl (SURRE)

R.T.: 0.000 min
Exp R.T. : 10.656 min
Response: 0
Conc: N.D.

Instrument : FID_C
ClientSampleId : D-17-4-SW-SB-25(9.5-10)DL



#12 1-chlorooctadecane (SURRE)

R.T.: 0.000 min
Exp R.T. : 12.025 min
Response: 0
Conc: N.D.