

Data Path : Z:\pestpcbsrv\HPCHEM1\FID_C\Data\FC060319AL\
 Data File : FC041591.D
 Signal(s) : FID1A.CH
 Acq On : 03 Jun 2019 13:56
 Operator : DD\AJ
 Sample : K2641-13
 Misc :
 ALS Vial : 5 Sample Multiplier: 1

Integration File: autoint1.e
 Quant Time: Jun 04 04:20:30 2019
 Quant Method : Z:\pestpcbsrv\HPCHEM1\FID_C\Method\Alaphatic EPH 051519.M
 Quant Title : GC Extractables
 QLast Update : Wed May 15 16:14:00 2019
 Response via : Initial Calibration
 Integrator: ChemStation 6890 Scale Mode: Large solvent peaks clipped

Volume Inj. : 1 ul
 Signal Phase : Rxi-1ms
 Signal Info : 20M x 0.18mm x 0.18um

Compound	R.T.	Response	Conc Units

System Monitoring Compounds			
9) S ortho-Terphenyl (SURR)	11.706	2591672	25.686 ug/ml
Spiked Amount	50.000	Recovery	= 51.37%
12) S 1-chlorooctadecane (S...	13.132	2048383	25.800 ug/ml
Spiked Amount	50.000	Recovery	= 51.60%

Target Compounds

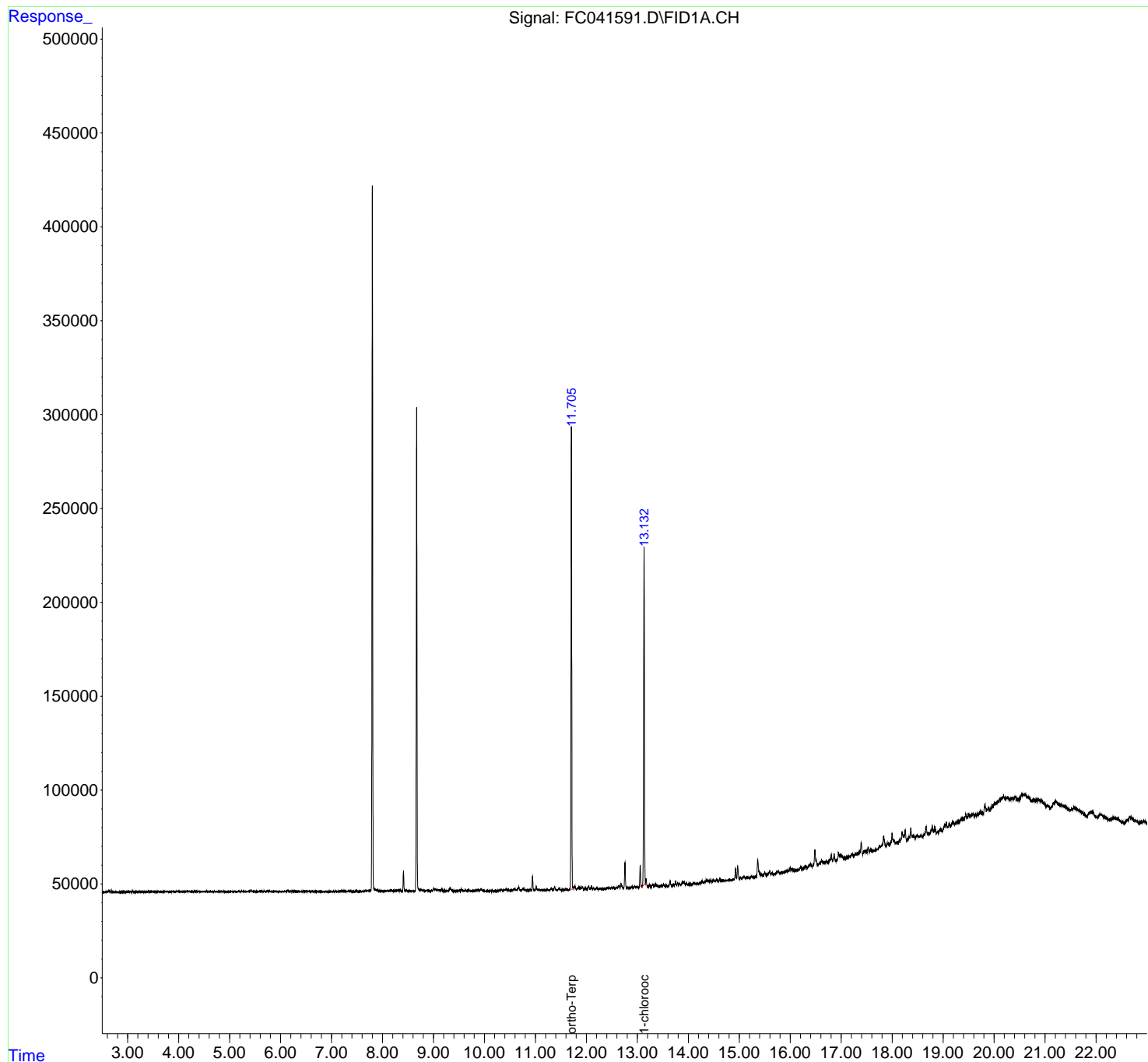
(f)=RT Delta > 1/2 Window

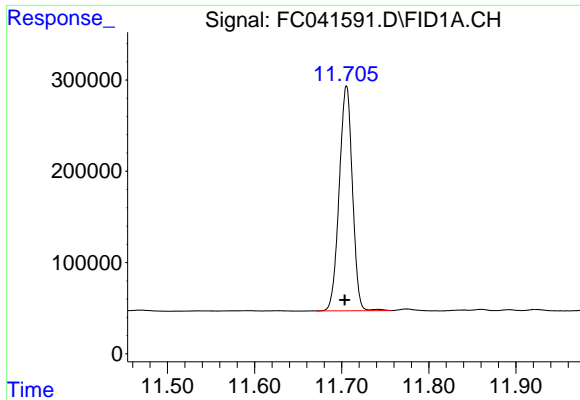
(m)=manual int.

Data Path : Z:\pestpcbsrv\HPCHEM1\FID_C\Data\FC060319AL\
Data File : FC041591.D
Signal(s) : FID1A.CH
Acq On : 03 Jun 2019 13:56
Operator : DD\AJ
Sample : K2641-13
Misc :
ALS Vial : 5 Sample Multiplier: 1

Integration File: autoint1.e
Quant Time: Jun 04 04:20:30 2019
Quant Method : Z:\pestpcbsrv\HPCHEM1\FID_C\Method\Alaphatic EPH 051519.M
Quant Title : GC Extractables
QLast Update : Wed May 15 16:14:00 2019
Response via : Initial Calibration
Integrator: ChemStation 6890 Scale Mode: Large solvent peaks clipped

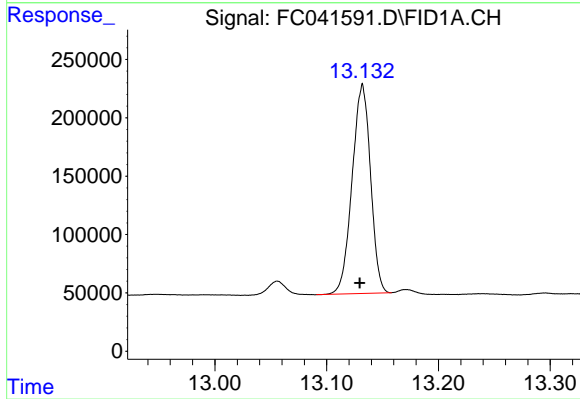
Volume Inj. : 1 ul
Signal Phase : Rxi-1ms
Signal Info : 20M x 0.18mm x 0.18um





#9 ortho-Terphenyl (SURR)

R.T.: 11.706 min
Delta R.T.: 0.002 min
Response: 2591672
Conc: 25.69 ug/ml



#12 1-chlorooctadecane (SURR)

R.T.: 13.132 min
Delta R.T.: 0.002 min
Response: 2048383
Conc: 25.80 ug/ml