

Data Path : Z:\pestpcbsrv\HPCHEM1\FID\_C\Data\FC060420AL\  
 Data File : FC047724.D  
 Signal(s) : FID1A.CH  
 Acq On : 04 Jun 2020 17:21  
 Operator : DD\AJ  
 Sample : L2871-02  
 Misc :  
 ALS Vial : 16 Sample Multiplier: 1

Instrument :  
 FID\_C  
 ClientSampleId :  
 WARREN-TP-A

Integration File: autoint1.e  
 Quant Time: Jun 05 05:33:02 2020  
 Quant Method : Z:\pestpcbsrv\HPCHEM1\FID\_C\Method\Alaphatic EPH 050820.M  
 Quant Title : GC Extractables  
 QLast Update : Fri May 08 16:49:27 2020  
 Response via : Initial Calibration  
 Integrator: ChemStation 6890 Scale Mode: Large solvent peaks clipped

Volume Inj. : 1 ul  
 Signal Phase : Rxi-1ms  
 Signal Info : 20M x 0.18mm x 0.18um

Compound	R.T.	Response	Conc Units
System Monitoring Compounds			
9) S ortho-Terphenyl (SURR)	11.737	4276110	35.771 ug/ml
Spiked Amount	50.000	Recovery =	71.54%
12) S 1-chlorooctadecane (S...	13.150	3500061	35.685 ug/ml
Spiked Amount	50.000	Recovery =	71.37%

Target Compounds

(f)=RT Delta > 1/2 Window

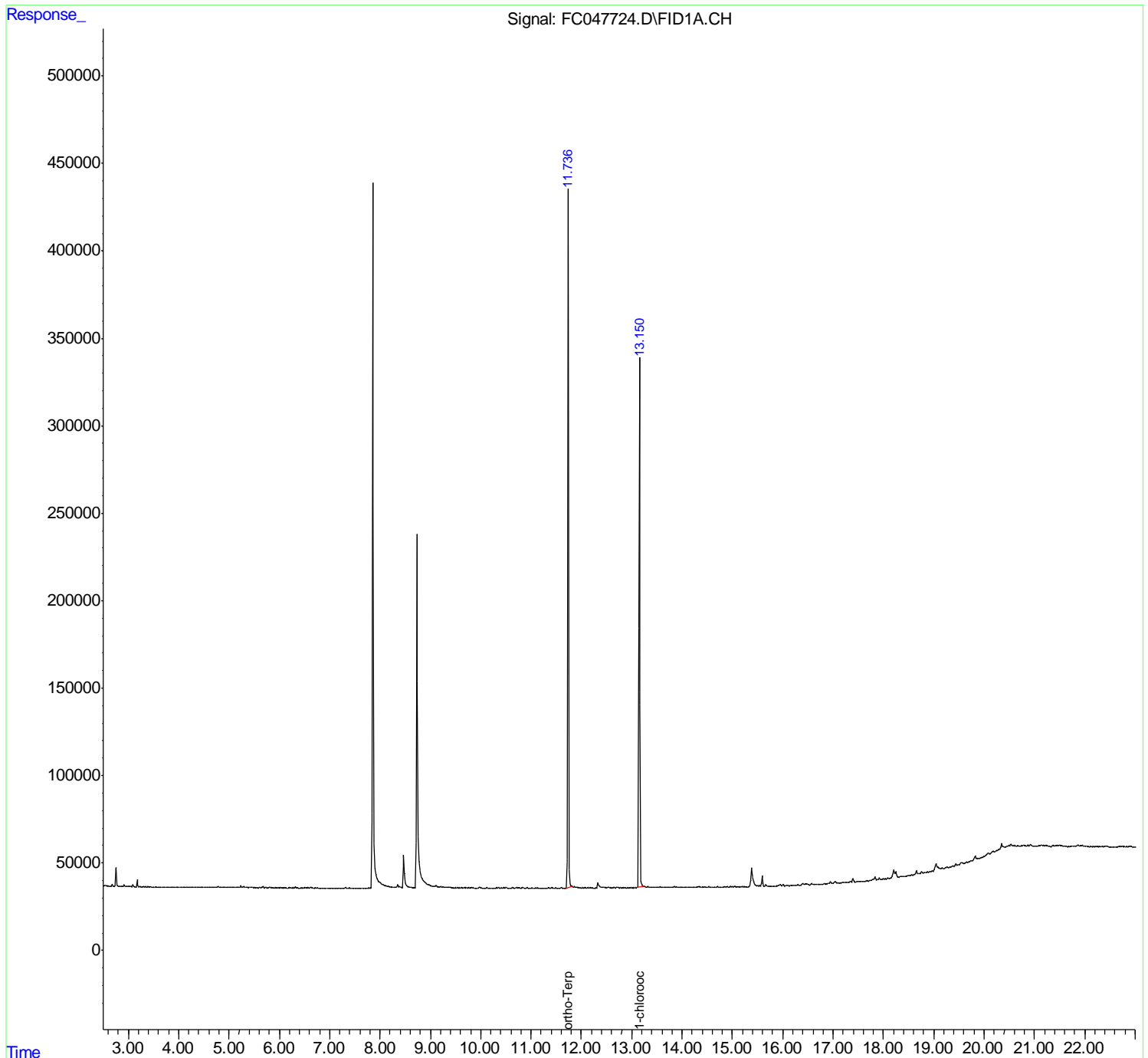
(m)=manual int.

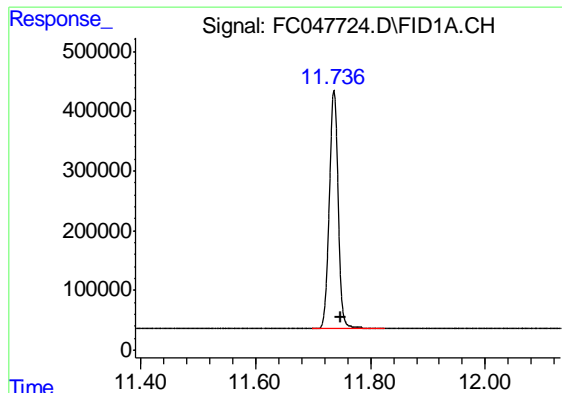
Data Path : Z:\pestpcbsrv\HPCHEM1\FID\_C\Data\FC060420AL\  
Data File : FC047724.D  
Signal(s) : FID1A.CH  
Acq On : 04 Jun 2020 17:21  
Operator : DD\AJ  
Sample : L2871-02  
Misc :  
ALS Vial : 16 Sample Multiplier: 1

Instrument :  
FID\_C  
ClientSampleId :  
WARREN-TP-A

Integration File: autoint1.e  
Quant Time: Jun 05 05:33:02 2020  
Quant Method : Z:\pestpcbsrv\HPCHEM1\FID\_C\Method\Alaphatic EPH 050820.M  
Quant Title : GC Extractables  
QLast Update : Fri May 08 16:49:27 2020  
Response via : Initial Calibration  
Integrator: ChemStation 6890 Scale Mode: Large solvent peaks clipped

Volume Inj. : 1 ul  
Signal Phase : Rxi-1ms  
Signal Info : 20M x 0.18mm x 0.18um

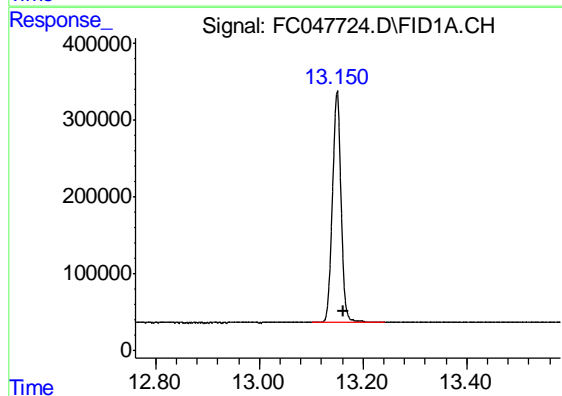




#9 ortho-Terphenyl (SURR)

R.T.: 11.737 min  
Delta R.T.: -0.011 min  
Response: 4276110  
Conc: 35.77 ug/ml

Instrument :  
FID\_C  
ClientSampleId :  
WARREN-TP-A



#12 1-chlorooctadecane (SURR)

R.T.: 13.150 min  
Delta R.T.: -0.011 min  
Response: 3500061  
Conc: 35.68 ug/ml