

Data Path : Z:\pestpcbsrv\HPCHEM1\FID_C\Data\FC060421AL\
 Data File : FC054005.D
 Signal(s) : FID1A.CH
 Acq On : 04 Jun 2021 21:49
 Operator : DD\AJ
 Sample : M2580-05
 Misc :
 ALS Vial : 11 Sample Multiplier: 1

Instrument :
 FID_C
 ClientSampleId :
 18-B2(2-4)

Integration File: autoint1.e
 Quant Time: Jun 05 01:20:31 2021
 Quant Method : Z:\pestpcbsrv\HPCHEM1\FID_C\Method\Alaphatic EPH 052721.M
 Quant Title : GC Extractables
 QLast Update : Fri May 28 09:04:47 2021
 Response via : Initial Calibration
 Integrator: ChemStation 6890 Scale Mode: Large solvent peaks clipped

Volume Inj. : 1 ul
 Signal Phase : Rxi-1ms
 Signal Info : 20M x 0.18mm x 0.18um

Compound	R.T.	Response	Conc Units
System Monitoring Compounds			
9) S ortho-Terphenyl (SURR)	11.369	3754707	26.892 ug/ml
Spiked Amount	50.000	Recovery	= 53.78%
12) S 1-chlorooctadecane (S...	12.815	3041169	27.125 ug/ml
Spiked Amount	50.000	Recovery	= 54.25%

Target Compounds

(f)=RT Delta > 1/2 Window

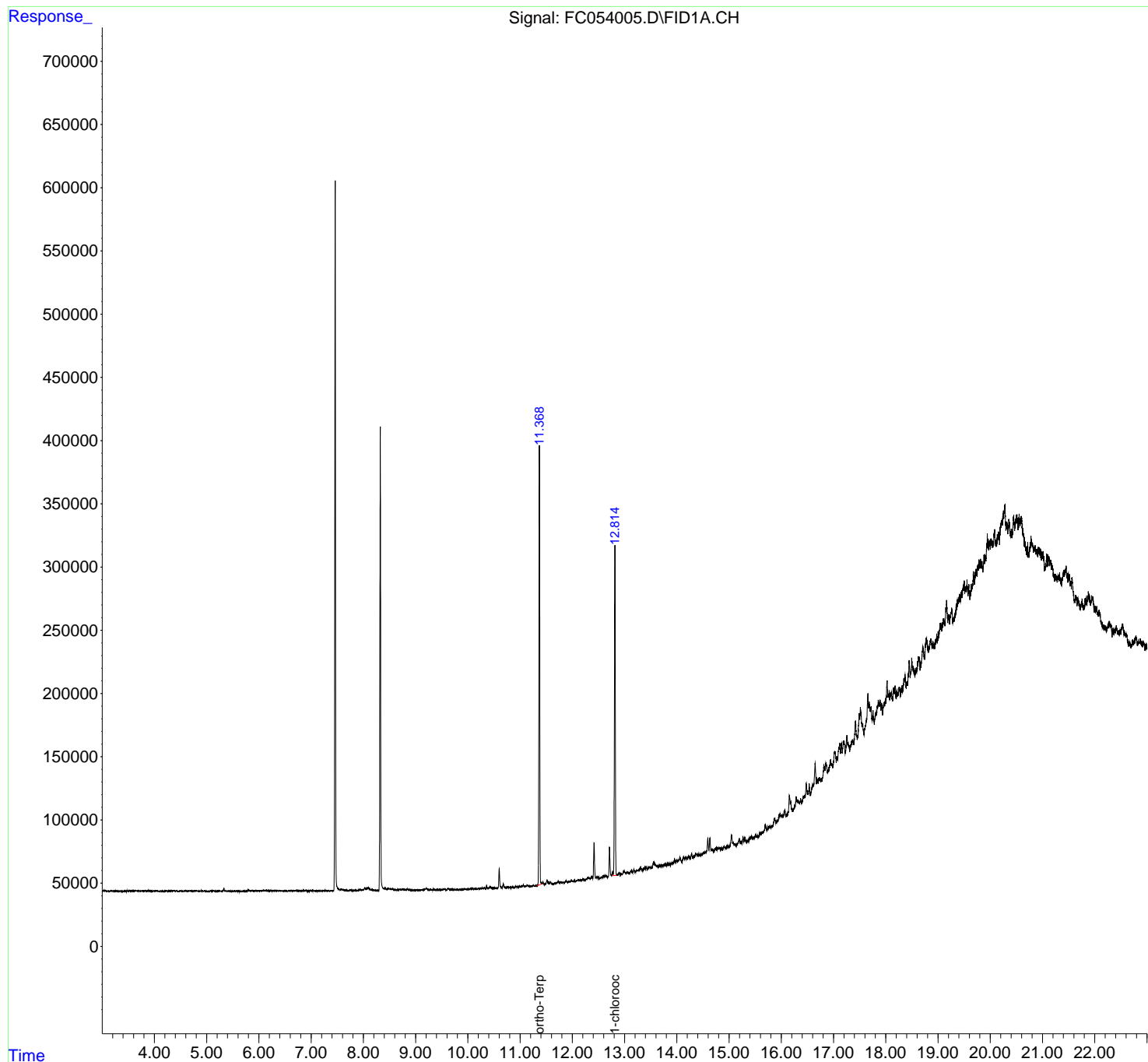
(m)=manual int.

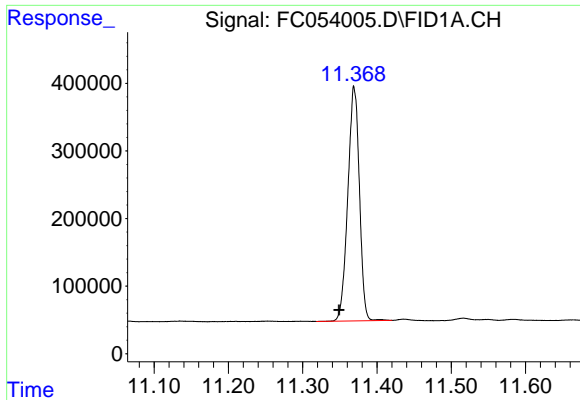
Data Path : Z:\pestpcbsrv\HPCHEM1\FID_C\Data\FC060421AL\
Data File : FC054005.D
Signal(s) : FID1A.CH
Acq On : 04 Jun 2021 21:49
Operator : DD\AJ
Sample : M2580-05
Misc :
ALS Vial : 11 Sample Multiplier: 1

Instrument :
FID_C
ClientSampleId :
18-B2(2-4)

Integration File: autoint1.e
Quant Time: Jun 05 01:20:31 2021
Quant Method : Z:\pestpcbsrv\HPCHEM1\FID_C\Method\Aliphatic EPH 052721.M
Quant Title : GC Extractables
QLast Update : Fri May 28 09:04:47 2021
Response via : Initial Calibration
Integrator: ChemStation 6890 Scale Mode: Large solvent peaks clipped

Volume Inj. : 1 ul
Signal Phase : Rxi-1ms
Signal Info : 20M x 0.18mm x 0.18um

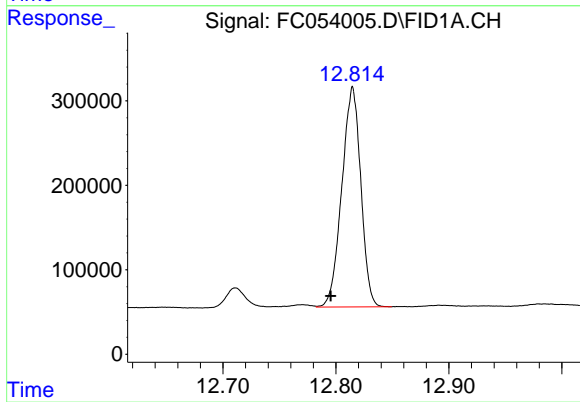




#9 ortho-Terphenyl (SURR)

R.T.: 11.369 min
Delta R.T.: 0.020 min
Response: 3754707
Conc: 26.89 ug/ml

Instrument :
FID_C
ClientSampleId :
18-B2(2-4)



#12 1-chlorooctadecane (SURR)

R.T.: 12.815 min
Delta R.T.: 0.019 min
Response: 3041169
Conc: 27.12 ug/ml