

Data Path : Z:\pestpcbsrv\HPCHEM1\FID_C\Data\FC060523AL\
 Data File : FC063725.D
 Signal(s) : FID1A.ch
 Acq On : 05 Jun 2023 09:14
 Operator : YP/AJ
 Sample : 20 PPM ALIPHATIC HC STD
 Misc :
 ALS Vial : 2 Sample Multiplier: 1

Instrument :
 FID_C
 ClientSampleId :
 20 PPM ALIPHATIC HC STD

Integration File: autoint1.e
 Quant Time: Jun 06 02:32:58 2023
 Quant Method : Z:\pestpcbsrv\HPCHEM1\FID_C\Method\Aliphatic EPH 052723.M
 Quant Title : GC Extractables
 QLast Update : Sat May 27 06:12:33 2023
 Response via : Initial Calibration
 Integrator: ChemStation

Volume Inj. : 1 ul
 Signal Phase : Rxi-1ms
 Signal Info : 20M x 0.18mm x 0.18um

Compound	R.T.	Response	Conc Units

System Monitoring Compounds			
9) S ortho-Terphenyl (SURR)	11.533	3786688	20.751 ug/ml
Spiked Amount	50.000	Recovery =	41.50%
12) S 1-chlorooctadecane (S...	12.967	2636574	20.635 ug/ml
Spiked Amount	50.000	Recovery =	41.27%
Target Compounds			
1) T n-Nonane (C9)	3.312	3444912	21.614 ug/ml
2) T n-Decane (C10)	4.375	3496217	21.628 ug/ml
3) T A~Naphthalene (C11.7)	5.958	3750855	21.591 ug/ml
4) T n-Dodecane (C12)	6.390	3444216	21.064 ug/ml
5) T A~2-methylnaphthalene...	7.014	3532061	21.560 ug/ml
6) T n-Tetradecane (C14)	8.182	3318346	21.100 ug/ml
7) T n-Hexadecane (C16)	9.779	3359642	21.111 ug/ml
8) T n-Octadecane (C18)	11.220	3277342	20.713 ug/ml
10) T n-Eicosane (C20)	12.523	3078329	20.815 ug/ml
11) T n-Heneicosane (C21)	13.134	3001778	20.854 ug/ml
13) T n-Docosane (C22)	13.719	2970183	21.084 ug/ml
14) T n-Tetracosane (C24)	14.818	2905944	21.177 ug/ml
15) T n-Hexacosane (C26)	15.835	2826762	21.319 ug/ml
16) T n-Octacosane (C28)	16.783	2760216	21.738 ug/ml
17) T n-Tricontane (C30)	17.666	2825550	22.115 ug/ml
18) T n-Dotriacontane (C32)	18.496	2773257	22.287 ug/ml
19) T n-Tetratriacontane (C34)	19.277	2715025	22.020 ug/ml
20) T n-Hexatriacontane (C36)	20.014	2617828	21.811 ug/ml
21) T n-Octatriacontane (C38)	20.738	2652867	21.973 ug/ml
22) T n-Tetracontane (C40)	21.628	2572080	21.227 ug/ml

(f)=RT Delta > 1/2 Window

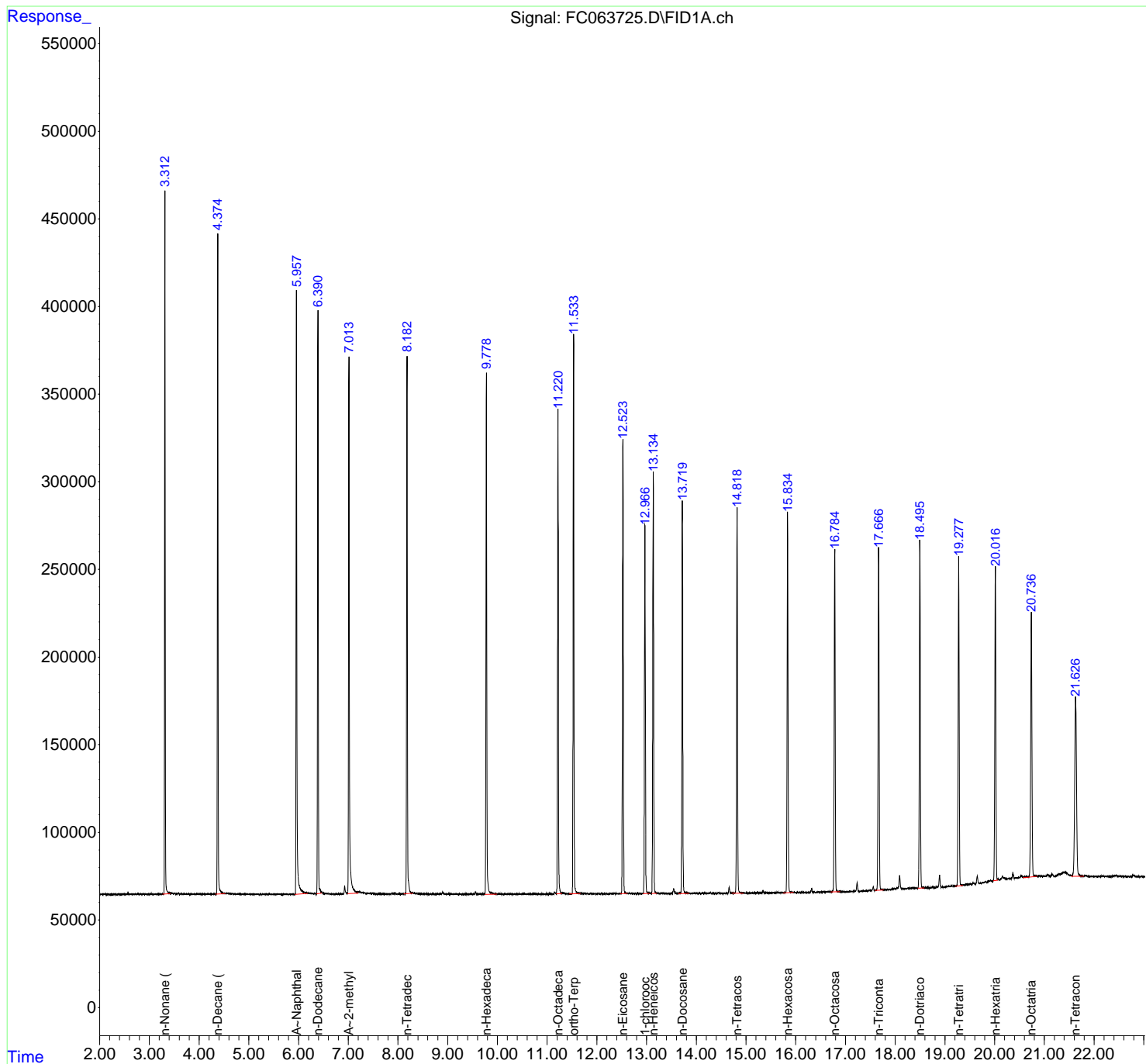
(m)=manual int.

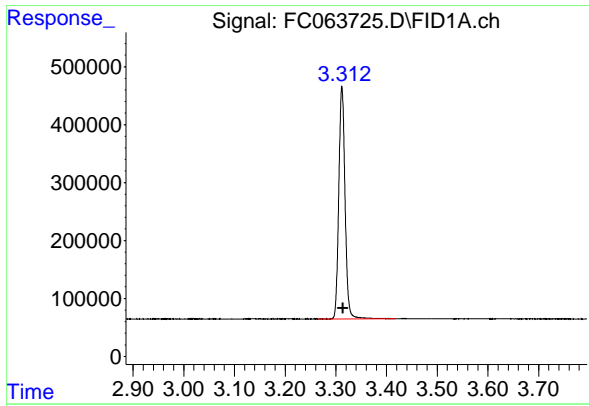
Data Path : Z:\pestpcbsrv\HPCHEM1\FID_C\Data\FC060523AL\
 Data File : FC063725.D
 Signal(s) : FID1A.ch
 Acq On : 05 Jun 2023 09:14
 Operator : YP/AJ
 Sample : 20 PPM ALIPHATIC HC STD
 Misc :
 ALS Vial : 2 Sample Multiplier: 1

Instrument :
 FID_C
 ClientSampleId :
 20 PPM ALIPHATIC HC STD

Integration File: autoint1.e
 Quant Time: Jun 06 02:32:58 2023
 Quant Method : Z:\pestpcbsrv\HPCHEM1\FID_C\Method\Aliphatic EPH 052723.M
 Quant Title : GC Extractables
 QLast Update : Sat May 27 06:12:33 2023
 Response via : Initial Calibration
 Integrator: ChemStation

Volume Inj. : 1 ul
 Signal Phase : Rxi-1ms
 Signal Info : 20M x 0.18mm x 0.18um

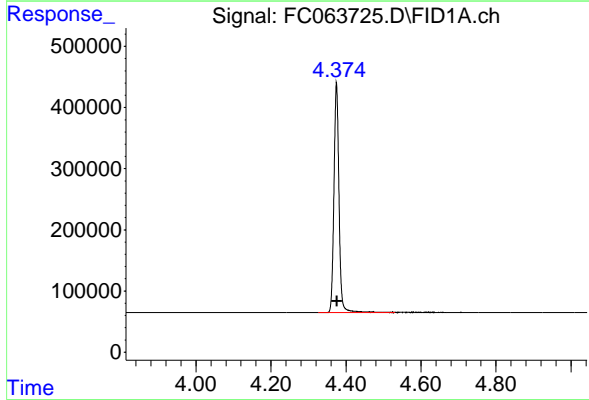




#1 n-Nonane (C9)

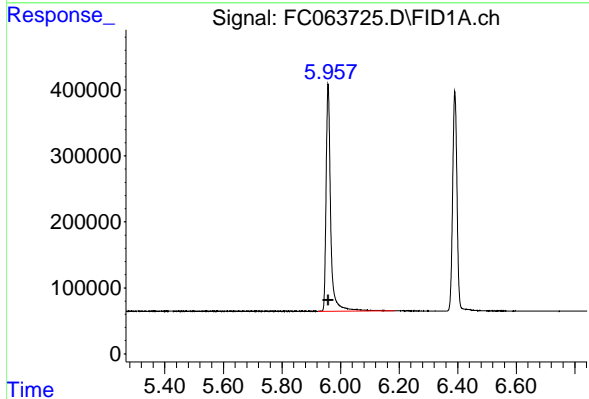
R.T.: 3.312 min
 Delta R.T.: -0.002 min
 Response: 3444912
 Conc: 21.61 ug/ml

Instrument :
 FID_C
 ClientSampleId :
 20 PPM ALIPHATIC HC STD



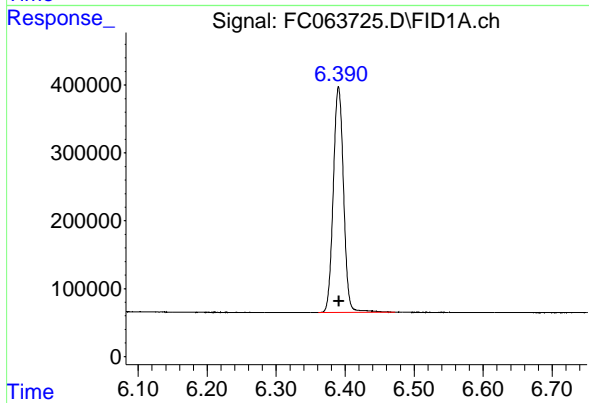
#2 n-Decane (C10)

R.T.: 4.375 min
 Delta R.T.: -0.002 min
 Response: 3496217
 Conc: 21.63 ug/ml



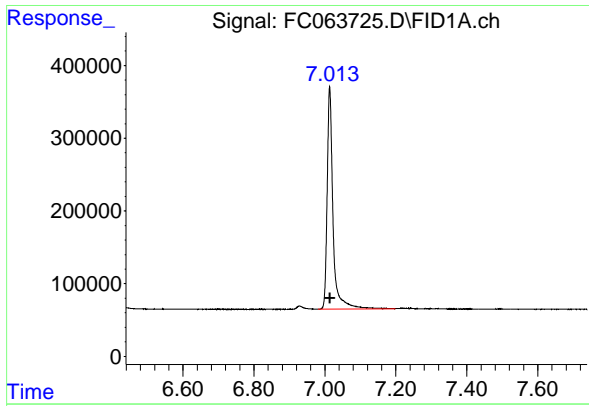
#3 A~Naphthalene (C11.7)

R.T.: 5.958 min
 Delta R.T.: 0.000 min
 Response: 3750855
 Conc: 21.59 ug/ml



#4 n-Dodecane (C12)

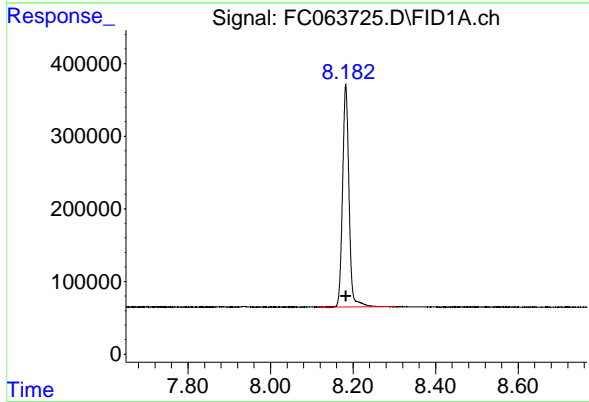
R.T.: 6.390 min
 Delta R.T.: 0.000 min
 Response: 3444216
 Conc: 21.06 ug/ml



#5 A~2-methylnaphthalene (C12.89)

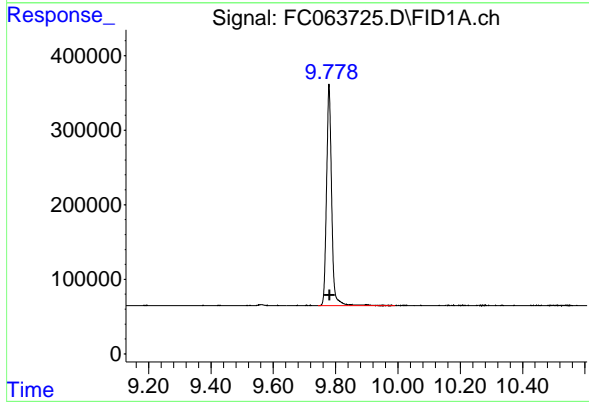
R.T.: 7.014 min
Delta R.T.: 0.000 min
Response: 3532061
Conc: 21.56 ug/ml

Instrument : FID_C
ClientSampleId : 20 PPM ALIPHATIC HC STD



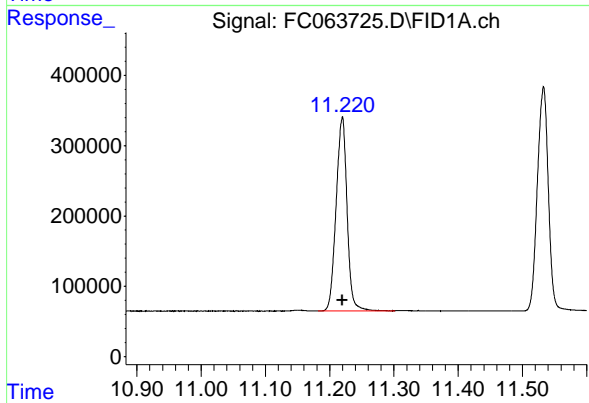
#6 n-Tetradecane (C14)

R.T.: 8.182 min
Delta R.T.: 0.000 min
Response: 3318346
Conc: 21.10 ug/ml



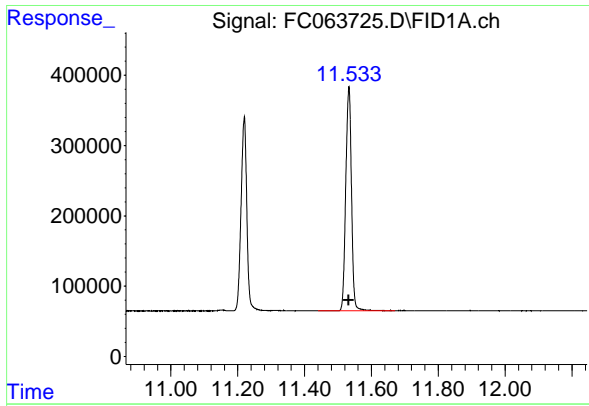
#7 n-Hexadecane (C16)

R.T.: 9.779 min
Delta R.T.: -0.002 min
Response: 3359642
Conc: 21.11 ug/ml



#8 n-Octadecane (C18)

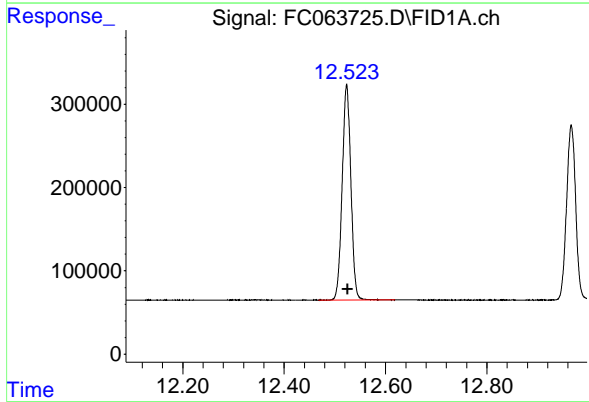
R.T.: 11.220 min
Delta R.T.: 0.000 min
Response: 3277342
Conc: 20.71 ug/ml



#9 ortho-Terphenyl (SURR)

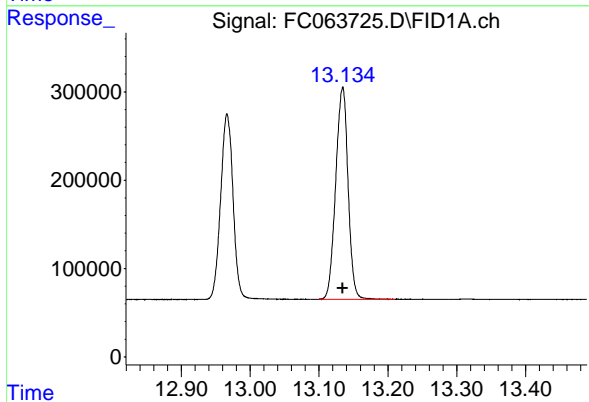
R.T.: 11.533 min
 Delta R.T.: 0.000 min
 Response: 3786688
 Conc: 20.75 ug/ml

Instrument : FID_C
 ClientSampleId : 20 PPM ALIPHATIC HC STD



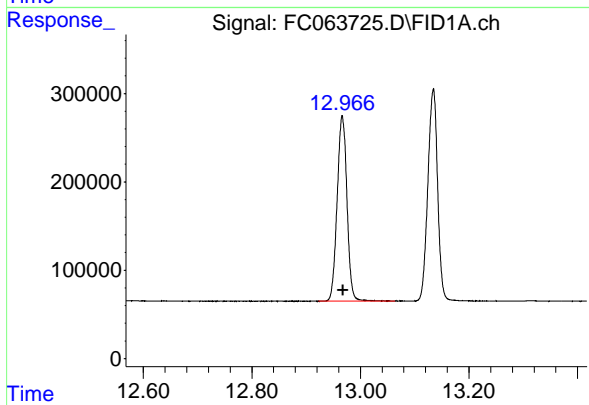
#10 n-Eicosane (C20)

R.T.: 12.523 min
 Delta R.T.: -0.002 min
 Response: 3078329
 Conc: 20.81 ug/ml



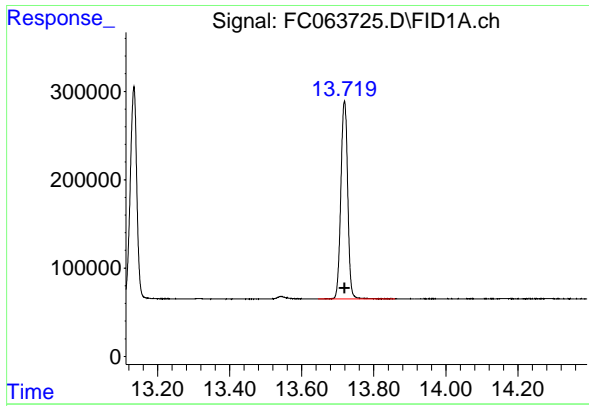
#11 n-Heneicosane (C21)

R.T.: 13.134 min
 Delta R.T.: 0.000 min
 Response: 3001778
 Conc: 20.85 ug/ml



#12 1-chlorooctadecane (SURR)

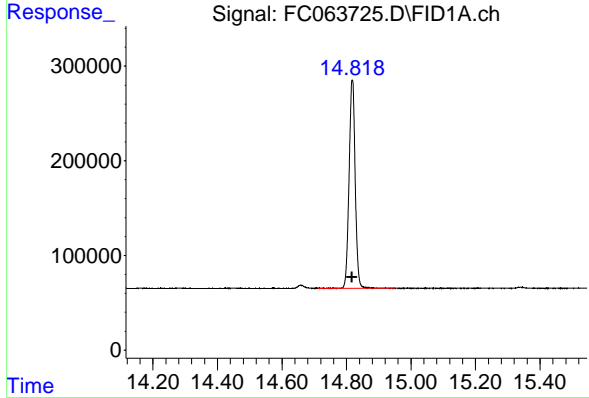
R.T.: 12.967 min
 Delta R.T.: -0.001 min
 Response: 2636574
 Conc: 20.63 ug/ml



#13 n-Docosane (C22)

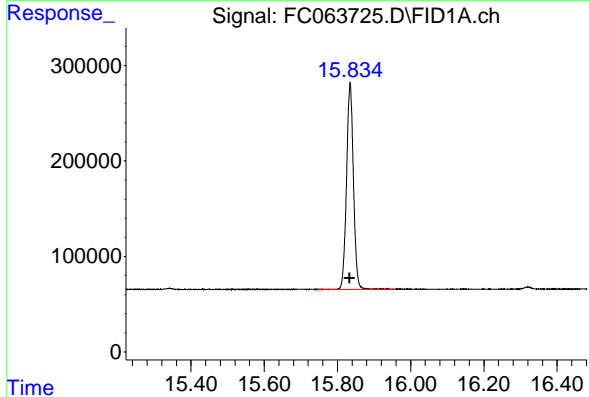
R.T.: 13.719 min
 Delta R.T.: 0.000 min
 Response: 2970183
 Conc: 21.08 ug/ml

Instrument : FID_C
 ClientSampleId : 20 PPM ALIPHATIC HC STD



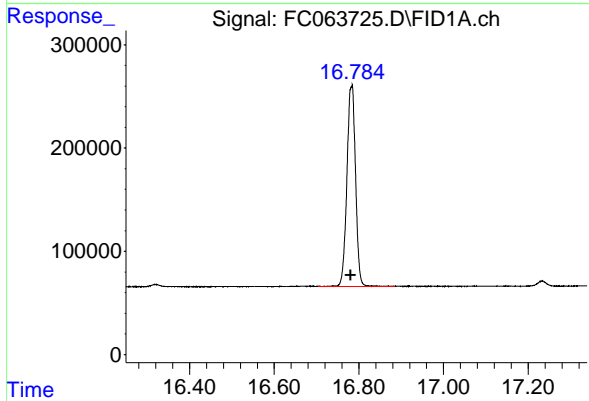
#14 n-Tetracosane (C24)

R.T.: 14.818 min
 Delta R.T.: 0.000 min
 Response: 2905944
 Conc: 21.18 ug/ml



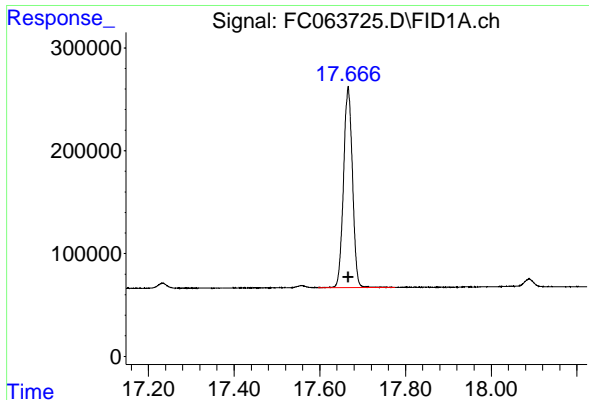
#15 n-Hexacosane (C26)

R.T.: 15.835 min
 Delta R.T.: 0.000 min
 Response: 2826762
 Conc: 21.32 ug/ml



#16 n-Octacosane (C28)

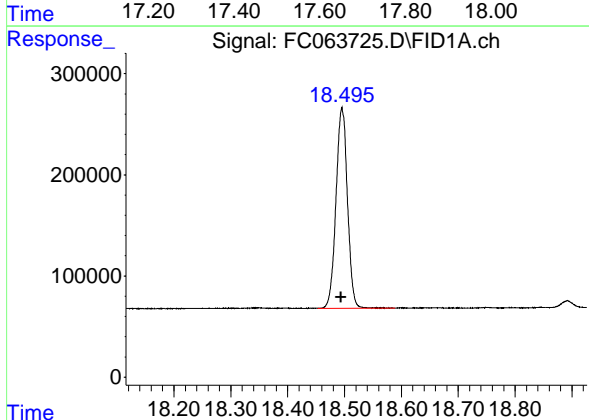
R.T.: 16.783 min
 Delta R.T.: 0.002 min
 Response: 2760216
 Conc: 21.74 ug/ml



#17 n-Tricontane (C30)

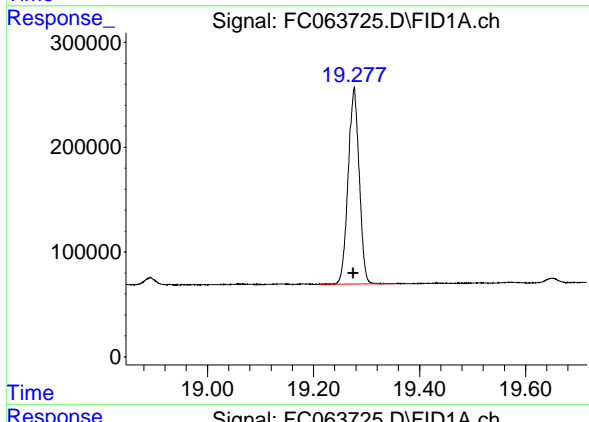
R.T.: 17.666 min
Delta R.T.: 0.000 min
Response: 2825550
Conc: 22.12 ug/ml

Instrument : FID_C
ClientSampleId : 20 PPM ALIPHATIC HC STD



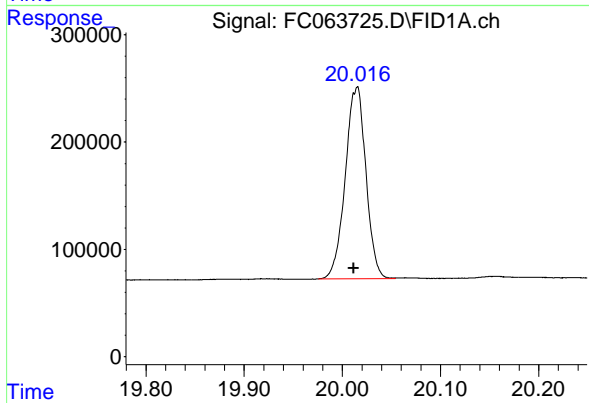
#18 n-Dotriacontane (C32)

R.T.: 18.496 min
Delta R.T.: 0.002 min
Response: 2773257
Conc: 22.29 ug/ml



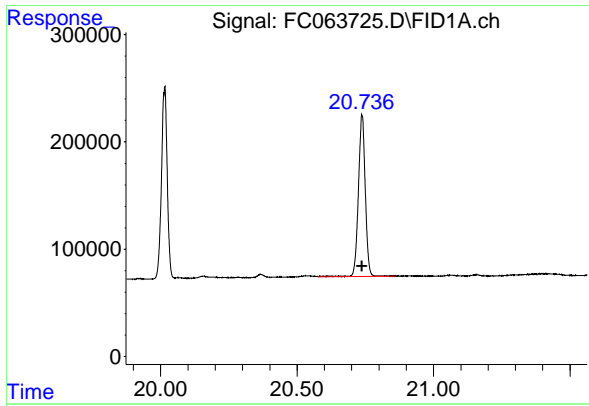
#19 n-Tetraatriacontane (C34)

R.T.: 19.277 min
Delta R.T.: 0.002 min
Response: 2715025
Conc: 22.02 ug/ml



#20 n-Hexatriacontane (C36)

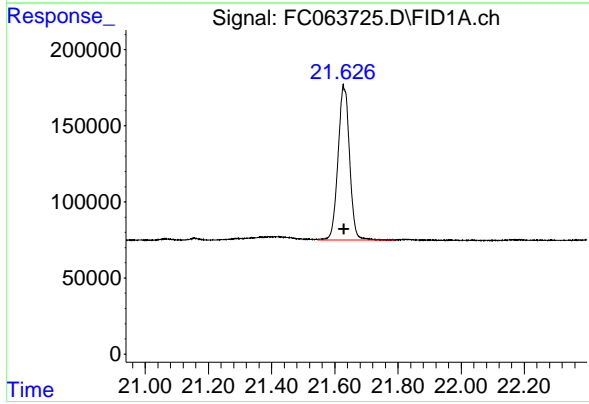
R.T.: 20.014 min
Delta R.T.: 0.003 min
Response: 2617828
Conc: 21.81 ug/ml



#21 n-Octatriacontane (C38)

R.T.: 20.738 min
Delta R.T.: 0.000 min
Response: 2652867
Conc: 21.97 ug/ml

Instrument :
FID_C
ClientSampleId :
20 PPM ALIPHATIC HC STD



#22 n-Tetracontane (C40)

R.T.: 21.628 min
Delta R.T.: 0.000 min
Response: 2572080
Conc: 21.23 ug/ml