

Data Path : Z:\pestpcbsrv\HPCHEM1\FID\_C\Data\FC060523AL\  
 Data File : FC063741.D  
 Signal(s) : FID1A.ch  
 Acq On : 05 Jun 2023 19:37  
 Operator : YP/AJ  
 Sample : 03010-01  
 Misc :  
 ALS Vial : 24 Sample Multiplier: 1

**Instrument :**  
 FID\_C  
**ClientSampleId :**  
 CONC-WC-1

**Manual Integrations**  
**APPROVED**  
 Reviewed By :Yogesh Patel 06/06/2023  
 Supervised By :Ankita Jodhani 06/06/2023

Integration File: autoint1.e  
 Quant Time: Jun 06 02:35:28 2023  
 Quant Method : Z:\pestpcbsrv\HPCHEM1\FID\_C\Method\Aliphatic EPH 052723.M  
 Quant Title : GC Extractables  
 QLast Update : Sat May 27 06:12:33 2023  
 Response via : Initial Calibration  
 Integrator: ChemStation

Volume Inj. : 1 ul  
 Signal Phase : Rxi-1ms  
 Signal Info : 20M x 0.18mm x 0.18um

Compound	R.T.	Response	Conc Units
-----			
System Monitoring Compounds			
12) S 1-chlorooctadecane (S...	12.979	4532619	35.474 ug/mlm
Spiked Amount	50.000	Recovery =	70.95%

Target Compounds

(f)=RT Delta > 1/2 Window

(m)=manual int.

Data Path : Z:\pestpcbsrv\HPCHEM1\FID\_C\Data\FC060523AL\  
Data File : FC063741.D  
Signal(s) : FID1A.ch  
Acq On : 05 Jun 2023 19:37  
Operator : YP/AJ  
Sample : 03010-01  
Misc :  
ALS Vial : 24 Sample Multiplier: 1

**Instrument :**

FID\_C

**ClientSampleId :**

CONC-WC-1

**Manual Integrations**

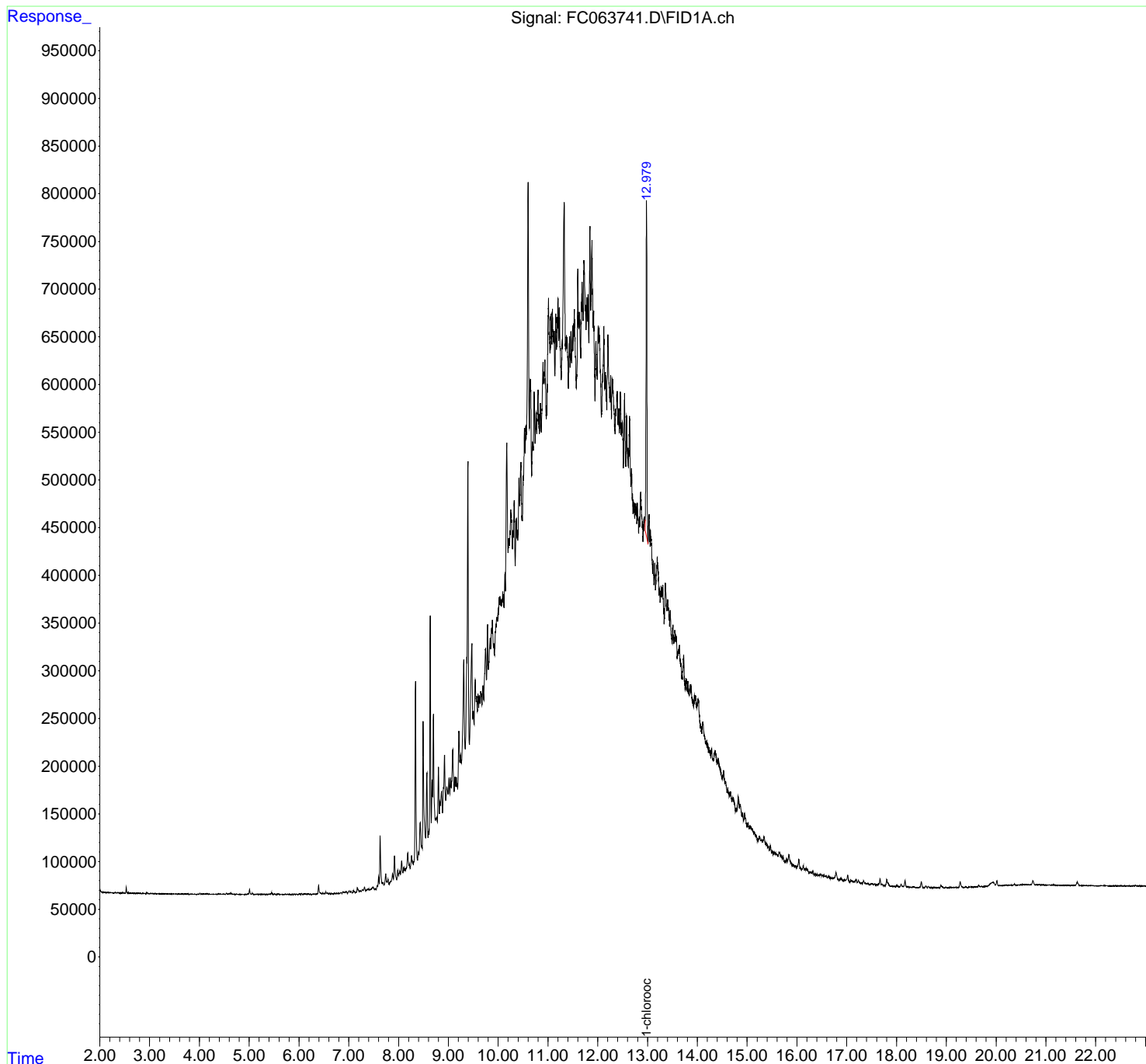
**APPROVED**

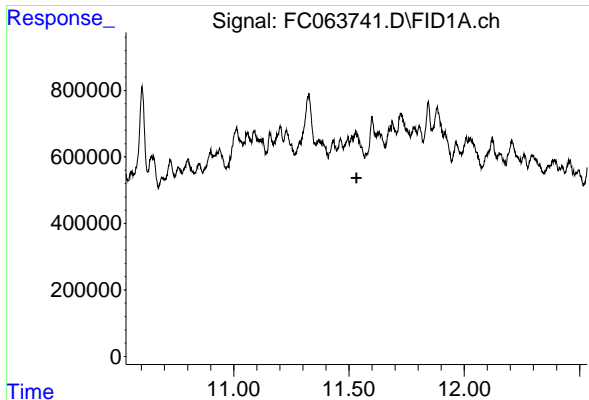
Reviewed By :Yogesh Patel 06/06/2023

Supervised By :Ankita Jodhani 06/06/2023

Integration File: autoint1.e  
Quant Time: Jun 06 02:35:28 2023  
Quant Method : Z:\pestpcbsrv\HPCHEM1\FID\_C\Method\Aliphatic EPH 052723.M  
Quant Title : GC Extractables  
QLast Update : Sat May 27 06:12:33 2023  
Response via : Initial Calibration  
Integrator: ChemStation

Volume Inj. : 1 ul  
Signal Phase : Rxi-1ms  
Signal Info : 20M x 0.18mm x 0.18um





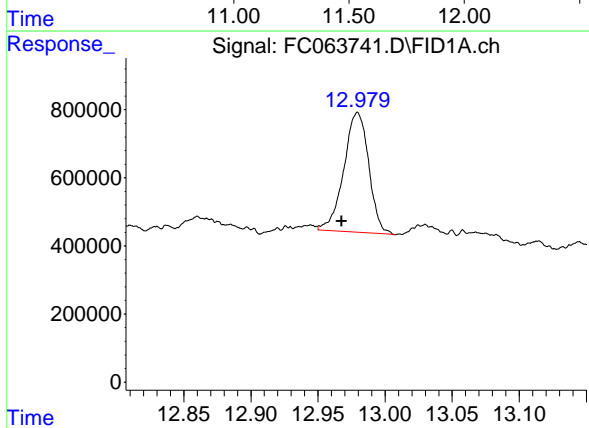
#9 ortho-Terphenyl (SURR)

R.T.: 0.000 min  
 Exp R.T.: 11.533 min  
 Response: 0  
 Conc: N.D.

Instrument : FID\_C  
 ClientSampleId : CONC-WC-1

Manual Integrations  
 APPROVED

Reviewed By :Yogesh Patel 06/06/2023  
 Supervised By :Ankita Jodhani 06/06/2023



#12 1-chlorooctadecane (SURR)

R.T.: 12.979 min  
 Delta R.T.: 0.012 min  
 Response: 4532619  
 Conc: 35.47 ug/ml m