

Data Path : Z:\pestpcbsrv\HPCHEM1\FID\_C\Data\FC060525AL\  
 Data File : FC069099.D  
 Signal(s) : FID1A.ch  
 Acq On : 06 Jun 2025 02:36  
 Operator : YP/AJ  
 Sample : PB168301BS  
 Misc :  
 ALS Vial : 29 Sample Multiplier: 1

**Instrument :**  
 FID\_C  
**ClientSampleId :**  
 PB168301BS

**Manual Integrations**  
**APPROVED**  
 Reviewed By :Yogesh Patel

Integration File: autoint1.e  
 Quant Time: Jun 06 04:14:30 2025  
 Quant Method : Z:\pestpcbsrv\HPCHEM1\FID\_C\Method\Aliphatic EPH 052425.M  
 Quant Title : GC Extractables  
 QLast Update : Tue May 27 01:48:55 2025  
 Response via : Initial Calibration  
 Integrator: ChemStation

06/06/2025  
 Supervised By :mohammad ahmed

Volume Inj. : 1 ul  
 Signal Phase : Rxi-1ms  
 Signal Info : 20M x 0.18mm x 0.18um

Compound	R.T.	Response	Conc Units
-----06/09/2025			
System Monitoring Compounds			
9) S ortho-Terphenyl (SURR)	11.680	6253286	50.698 ug/ml
Spiked Amount	50.000	Recovery	= 101.40%
12) S 1-chlorooctadecane (S...	13.115	4826710	53.801 ug/ml
Spiked Amount	50.000	Recovery	= 107.60%
Target Compounds			
1) T n-Nonane (C9)	3.414	5827268	54.910 ug/ml
2) T n-Decane (C10)	4.484	6188789	58.436 ug/mlm
3) T A~Naphthalene (C11.7)	6.075	7184352	62.129 ug/ml
4) T n-Dodecane (C12)	6.507	6174456	58.736 ug/ml
5) T A~2-methylnaphthalene...	7.135	6530609	57.604 ug/ml
6) T n-Tetradecane (C14)	8.308	5826768	56.845 ug/ml
7) T n-Hexadecane (C16)	9.911	5656470	55.747 ug/ml
8) T n-Octadecane (C18)	11.357	5421253	54.243 ug/ml
10) T n-Eicosane (C20)	12.670	5536536	56.844 ug/ml
11) T n-Heneicosane (C21)	13.283	5296777	55.030 ug/ml
13) T n-Docosane (C22)	13.870	5244434	55.049 ug/ml
14) T n-Tetracosane (C24)	14.968	11237332	119.352 ug/ml
15) T n-Hexacosane (C26)	16.000	5164138	55.623 ug/ml
16) T n-Octacosane (C28)	16.950	5169587	55.615 ug/ml
17) T n-Tricontane (C30)	17.843	5171747	53.451 ug/ml
18) T n-Dotriacontane (C32)	18.675	5201849	52.492 ug/ml
19) T n-Tetratriacontane (C34)	19.460	5445611	56.502 ug/ml
20) T n-Hexatriacontane (C36)	20.204	5441092	57.317 ug/ml
21) T n-Octatriacontane (C38)	20.974	5695038	62.422 ug/ml
22) T n-Tetracontane (C40)	21.945	5734446	64.991 ug/mlm

(f)=RT Delta > 1/2 Window

(m)=manual int.

Data Path : Z:\pestpcbsrv\HPCHEM1\FID\_C\Data\FC060525AL\  
 Data File : FC069099.D  
 Signal(s) : FID1A.ch  
 Acq On : 06 Jun 2025 02:36  
 Operator : YP/AJ  
 Sample : PB168301BS  
 Misc :  
 ALS Vial : 29 Sample Multiplier: 1

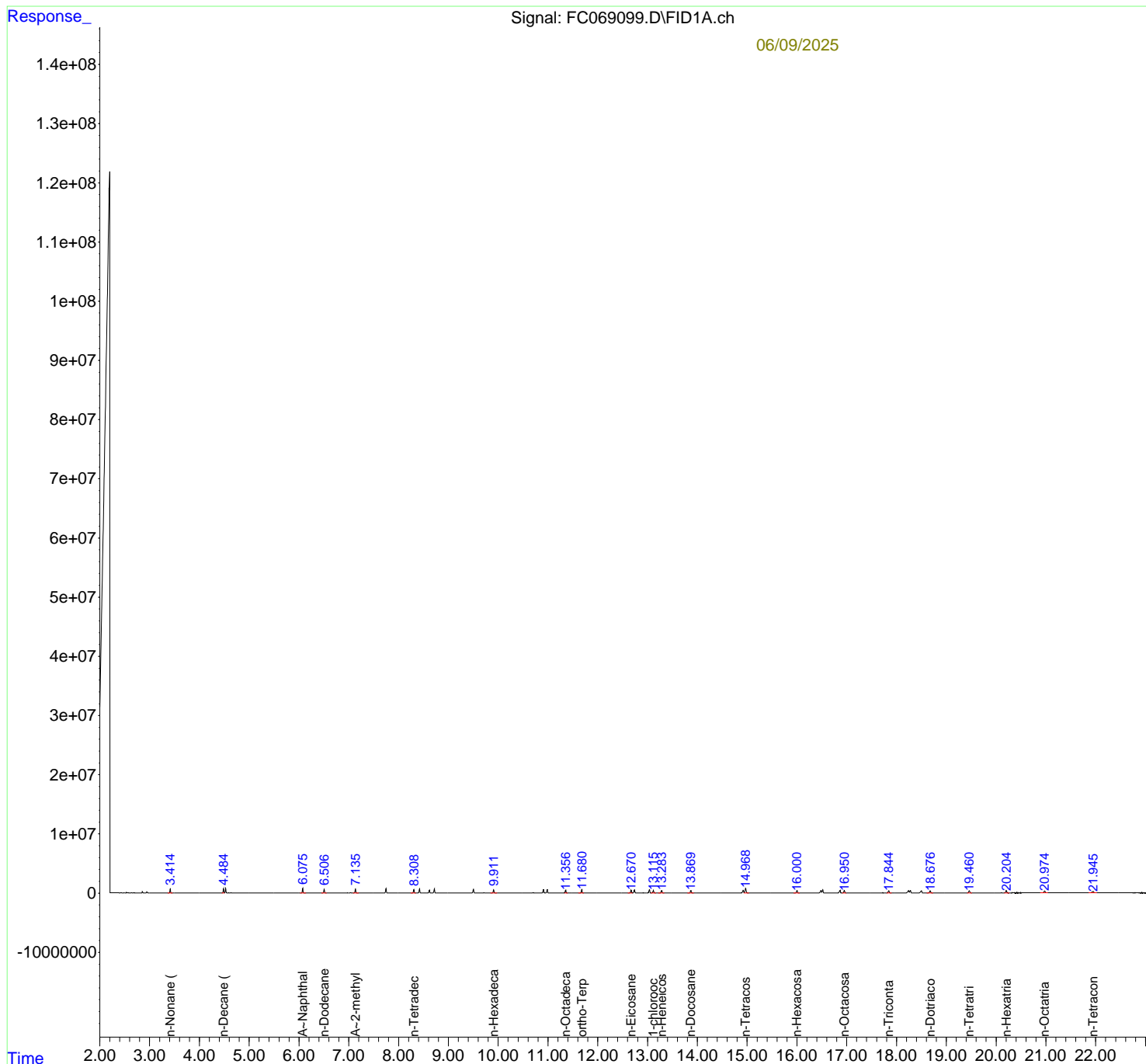
**Instrument :**  
 FID\_C  
**ClientSampleId :**  
 PB168301BS

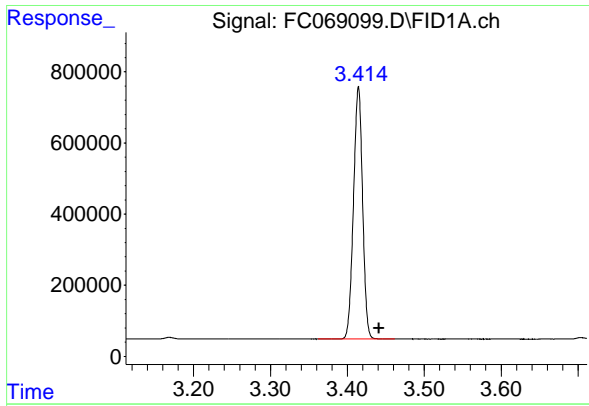
**Manual Integrations**  
**APPROVED**  
 Reviewed By :Yogesh Patel

Integration File: autoint1.e  
 Quant Time: Jun 06 04:14:30 2025  
 Quant Method : Z:\pestpcbsrv\HPCHEM1\FID\_C\Method\Aliphatic EPH 052425.M  
 Quant Title : GC Extractables  
 QLast Update : Tue May 27 01:48:55 2025  
 Response via : Initial Calibration  
 Integrator: ChemStation

06/06/2025  
 Supervised By :mohammad ahmed

Volume Inj. : 1 ul  
 Signal Phase : Rxi-1ms  
 Signal Info : 20M x 0.18mm x 0.18um





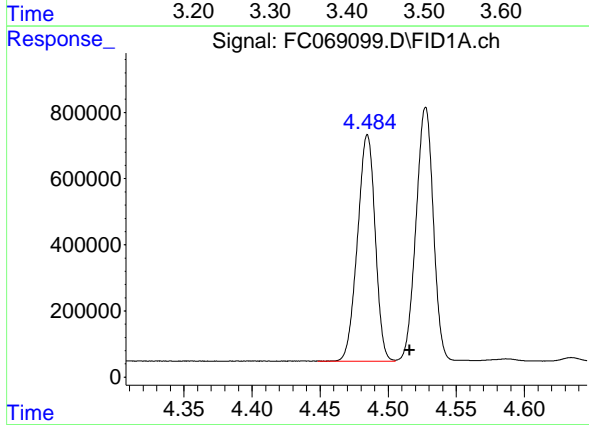
#1 n-Nonane (C9)

R.T.: 3.414 min  
 Delta R.T.: -0.027 min  
 Response: 5827268  
 Conc: 54.91 ug/ml

Instrument : FID\_C  
 Client Sample Id : PB168301BS

Manual Integrations  
 APPROVED

Reviewed By :Yogesh  
 Patel

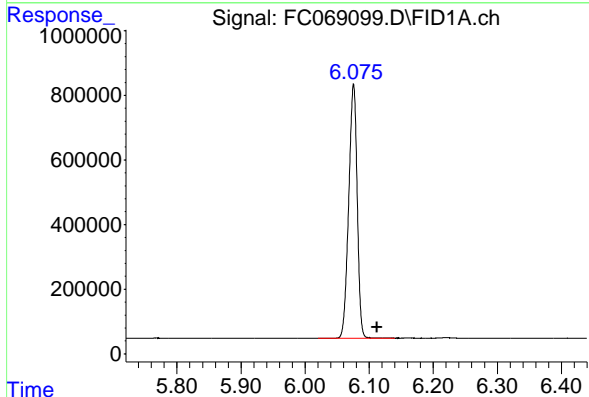


#2 n-Decane (C10)

R.T.: 4.484 min  
 Delta R.T.: -0.031 min  
 Response: 6188789  
 Conc: 58.44 ug/ml m

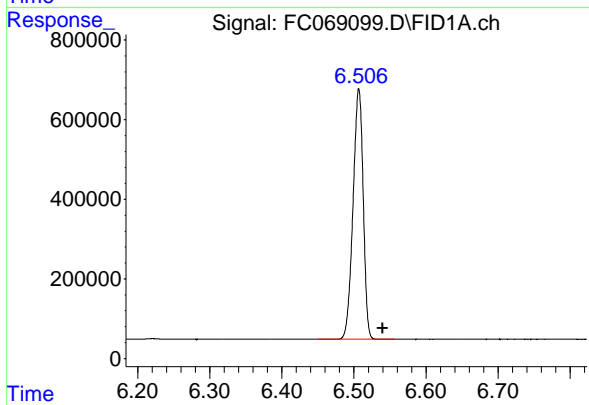
06/06/2025  
 Supervised By :mohammad  
 ahmed

06/09/2025



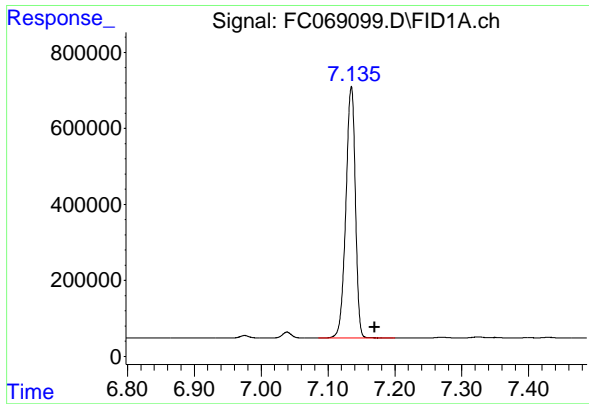
#3 A~Naphthalene (C11.7)

R.T.: 6.075 min  
 Delta R.T.: -0.037 min  
 Response: 7184352  
 Conc: 62.13 ug/ml



#4 n-Dodecane (C12)

R.T.: 6.507 min  
 Delta R.T.: -0.033 min  
 Response: 6174456  
 Conc: 58.74 ug/ml



#5 A~2-methylnaphthalene (C12.89)

R.T.: 7.135 min  
 Delta R.T.: -0.035 min  
 Response: 6530609  
 Conc: 57.60 ug/ml

Instrument :

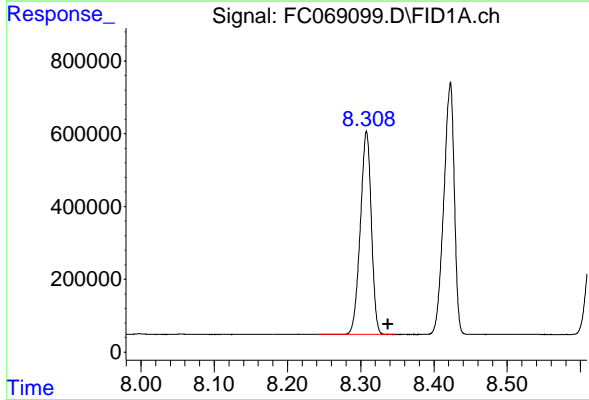
FID\_C

Client Sample Id :

PB168301BS

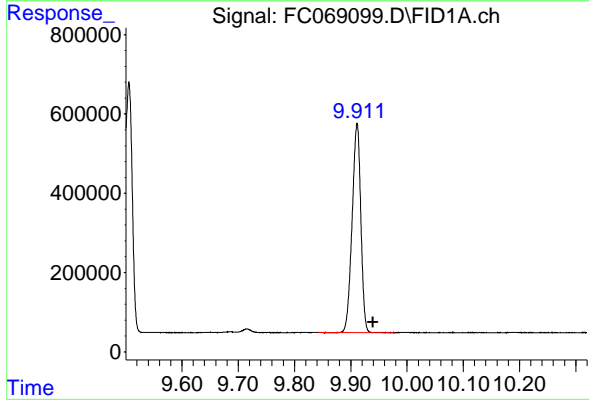
Manual Integrations  
 APPROVED

Reviewed By :Yogesh Patel 06/06/2025  
 Supervised By :mohammad ahmed 06/09/2025



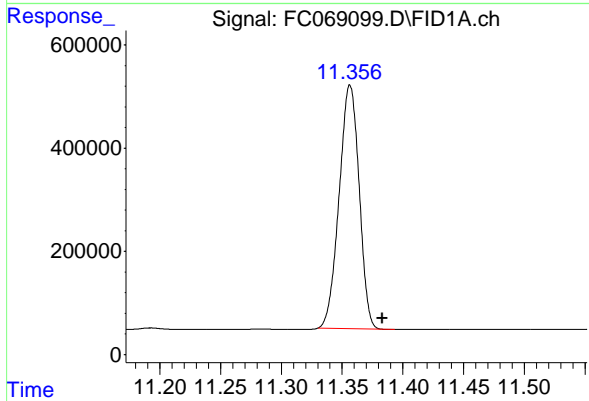
#6 n-Tetradecane (C14)

R.T.: 8.308 min  
 Delta R.T.: -0.029 min  
 Response: 5826768  
 Conc: 56.84 ug/ml



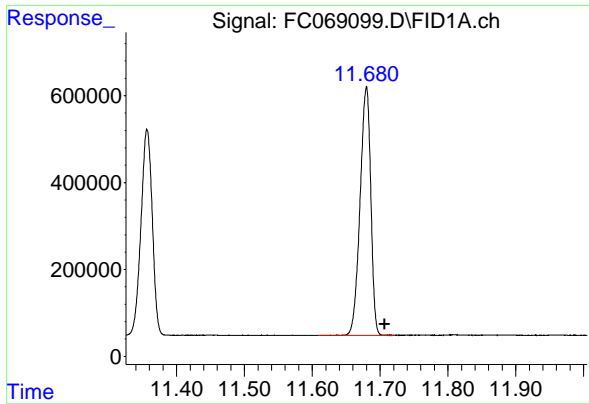
#7 n-Hexadecane (C16)

R.T.: 9.911 min  
 Delta R.T.: -0.029 min  
 Response: 5656470  
 Conc: 55.75 ug/ml



#8 n-Octadecane (C18)

R.T.: 11.357 min  
 Delta R.T.: -0.027 min  
 Response: 5421253  
 Conc: 54.24 ug/ml



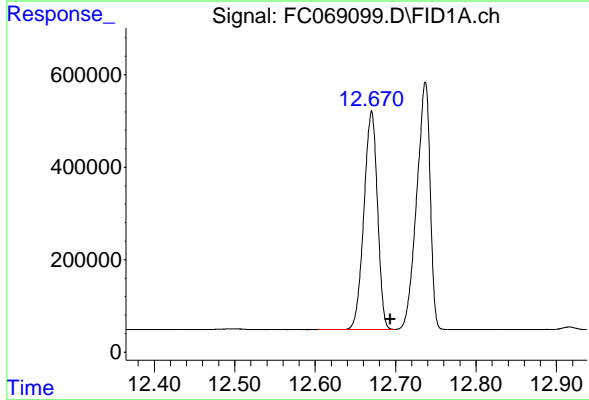
#9 ortho-Terphenyl (SURR)

R.T.: 11.680 min  
 Delta R.T.: -0.027 min  
 Response: 6253286  
 Conc: 50.70 ug/ml

Instrument : FID\_C  
 ClientSampleId : PB168301BS

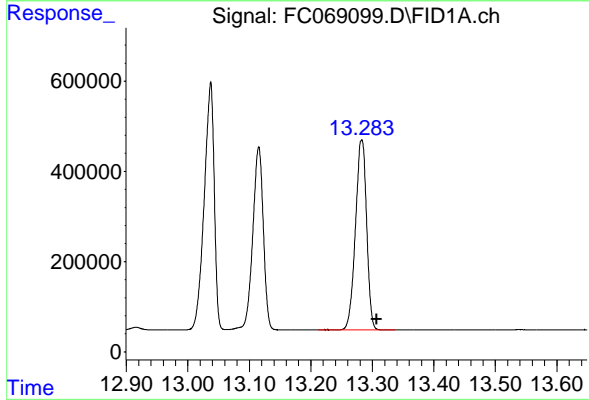
Manual Integrations  
 APPROVED

Reviewed By :Yogesh Patel 06/06/2025  
 Supervised By :mohammad ahmed 06/09/2025



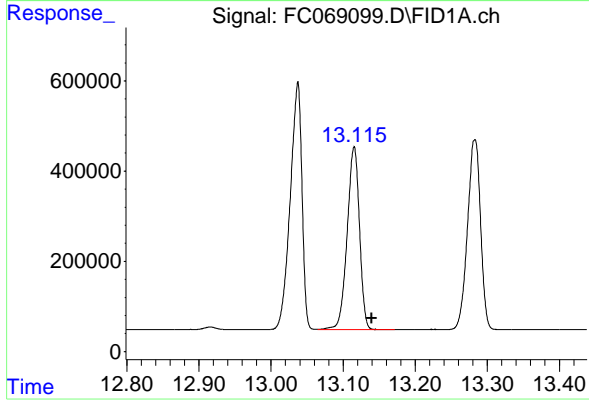
#10 n-Eicosane (C20)

R.T.: 12.670 min  
 Delta R.T.: -0.024 min  
 Response: 5536536  
 Conc: 56.84 ug/ml



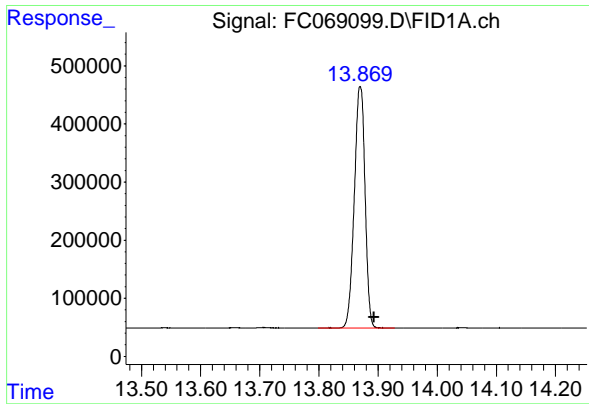
#11 n-Heneicosane (C21)

R.T.: 13.283 min  
 Delta R.T.: -0.024 min  
 Response: 5296777  
 Conc: 55.03 ug/ml



#12 1-chlorooctadecane (SURR)

R.T.: 13.115 min  
 Delta R.T.: -0.024 min  
 Response: 4826710  
 Conc: 53.80 ug/ml



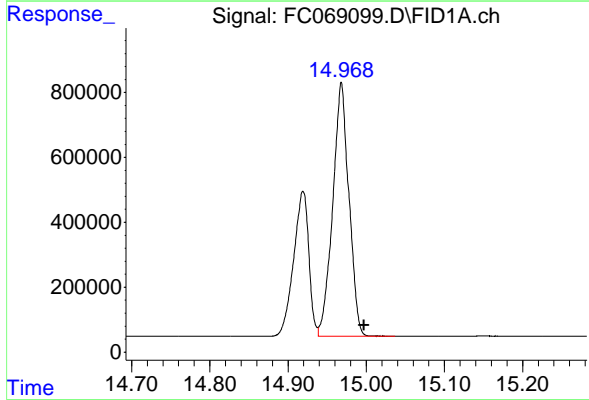
#13 n-Docosane (C22)

R.T.: 13.870 min  
 Delta R.T.: -0.024 min  
 Response: 5244434  
 Conc: 55.05 ug/ml

Instrument :  
 FID\_C  
 ClientSampleId :  
 PB168301BS

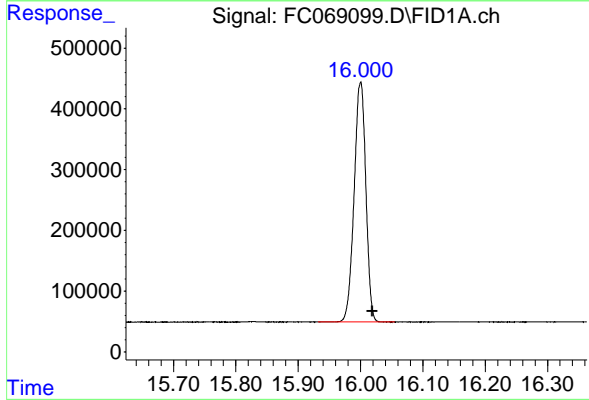
Manual Integrations  
 APPROVED

Reviewed By :Yogesh Patel 06/06/2025  
 Supervised By :mohammad ahmed 06/09/2025



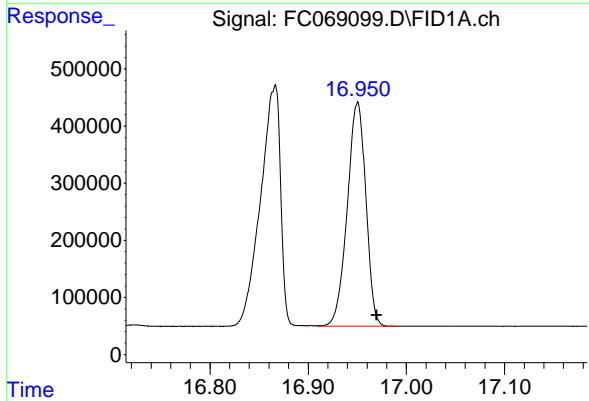
#14 n-Tetracosane (C24)

R.T.: 14.968 min  
 Delta R.T.: -0.029 min  
 Response: 11237332  
 Conc: 119.35 ug/ml



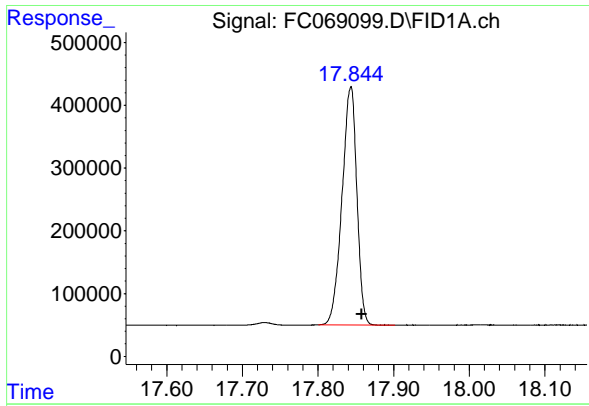
#15 n-Hexacosane (C26)

R.T.: 16.000 min  
 Delta R.T.: -0.019 min  
 Response: 5164138  
 Conc: 55.62 ug/ml



#16 n-Octacosane (C28)

R.T.: 16.950 min  
 Delta R.T.: -0.020 min  
 Response: 5169587  
 Conc: 55.62 ug/ml



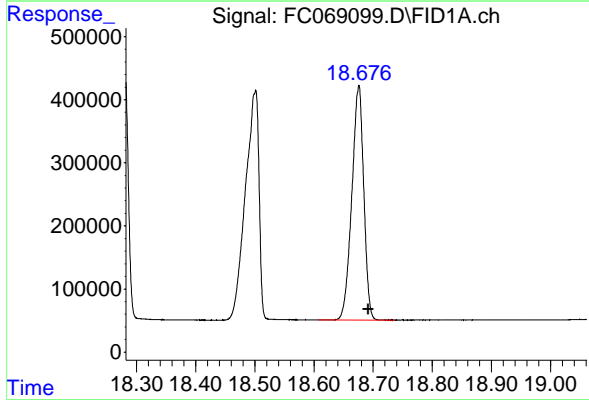
#17 n-Tricontane (C30)

R.T.: 17.843 min  
 Delta R.T.: -0.015 min  
 Response: 5171747  
 Conc: 53.45 ug/ml

Instrument : FID\_C  
 Client Sample Id : PB168301BS

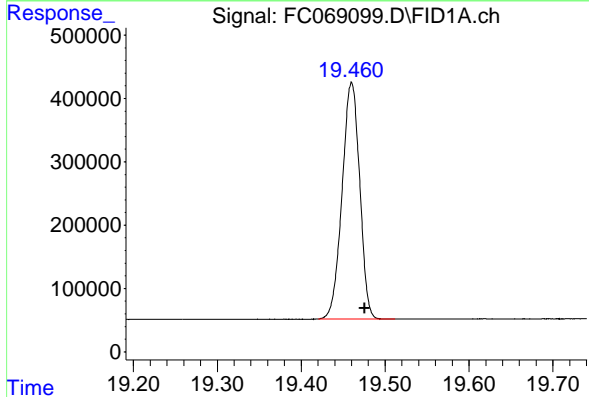
Manual Integrations  
 APPROVED

Reviewed By :Yogesh Patel 06/06/2025  
 Supervised By :mohammad ahmed 06/09/2025



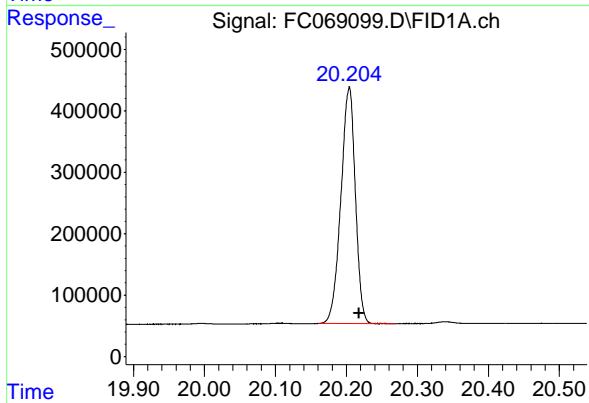
#18 n-Dotriacontane (C32)

R.T.: 18.675 min  
 Delta R.T.: -0.017 min  
 Response: 5201849  
 Conc: 52.49 ug/ml



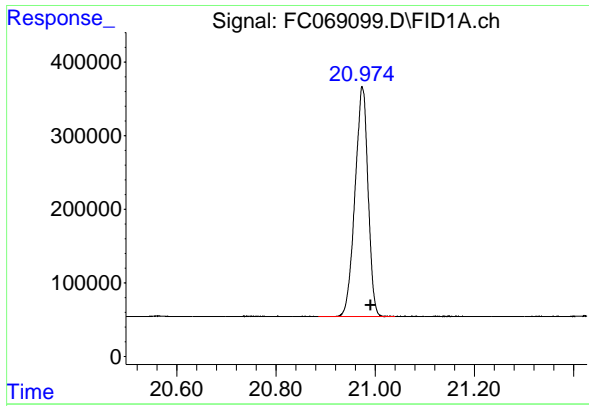
#19 n-Tetracontane (C34)

R.T.: 19.460 min  
 Delta R.T.: -0.016 min  
 Response: 5445611  
 Conc: 56.50 ug/ml



#20 n-Hexatriacontane (C36)

R.T.: 20.204 min  
 Delta R.T.: -0.014 min  
 Response: 5441092  
 Conc: 57.32 ug/ml



#21 n-Octatriacontane (C38)

R.T.: 20.974 min  
 Delta R.T.: -0.016 min  
 Response: 5695038  
 Conc: 62.42 ug/ml

Instrument :

FID\_C

ClientSampleId :

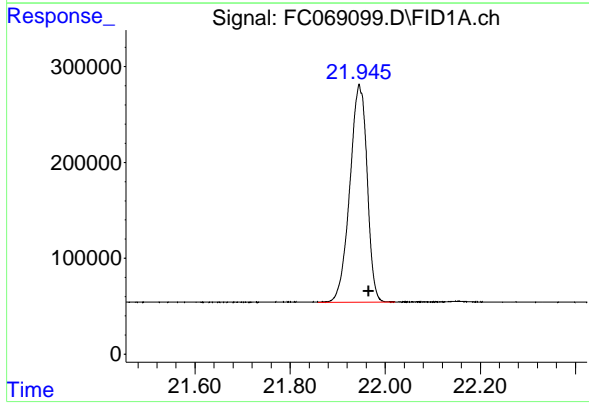
PB168301BS

Manual Integrations

APPROVED

Reviewed By :Yogesh Patel 06/06/2025

Supervised By :mohammad ahmed 06/09/2025



#22 n-Tetracontane (C40)

R.T.: 21.945 min  
 Delta R.T.: -0.020 min  
 Response: 5734446  
 Conc: 64.99 ug/ml m