

Data Path : Z:\pestpcbsrv\HPCHEM1\FID_C\Data\FC060721AL\
 Data File : FC054093.D
 Signal(s) : FID1A.CH
 Acq On : 07 Jun 2021 20:26
 Operator : DD\AJ
 Sample : M2613-02
 Misc :
 ALS Vial : 16 Sample Multiplier: 1

Instrument :
 FID_C
 ClientSampleId :
 18-B12(90-94)

Integration File: autoint1.e
 Quant Time: Jun 08 02:59:05 2021
 Quant Method : Z:\pestpcbsrv\HPCHEM1\FID_C\Method\Alaphatic EPH 052721.M
 Quant Title : GC Extractables
 QLast Update : Fri May 28 09:04:47 2021
 Response via : Initial Calibration
 Integrator: ChemStation 6890 Scale Mode: Large solvent peaks clipped

Volume Inj. : 1 ul
 Signal Phase : Rxi-1ms
 Signal Info : 20M x 0.18mm x 0.18um

Compound	R.T.	Response	Conc Units

System Monitoring Compounds			
9) S ortho-Terphenyl (SURR)	11.359	5607724	40.163 ug/ml
Spiked Amount	50.000	Recovery	= 80.33%
12) S 1-chlorooctadecane (S...	12.804	4225699	37.690 ug/ml
Spiked Amount	50.000	Recovery	= 75.38%

Target Compounds

(f)=RT Delta > 1/2 Window

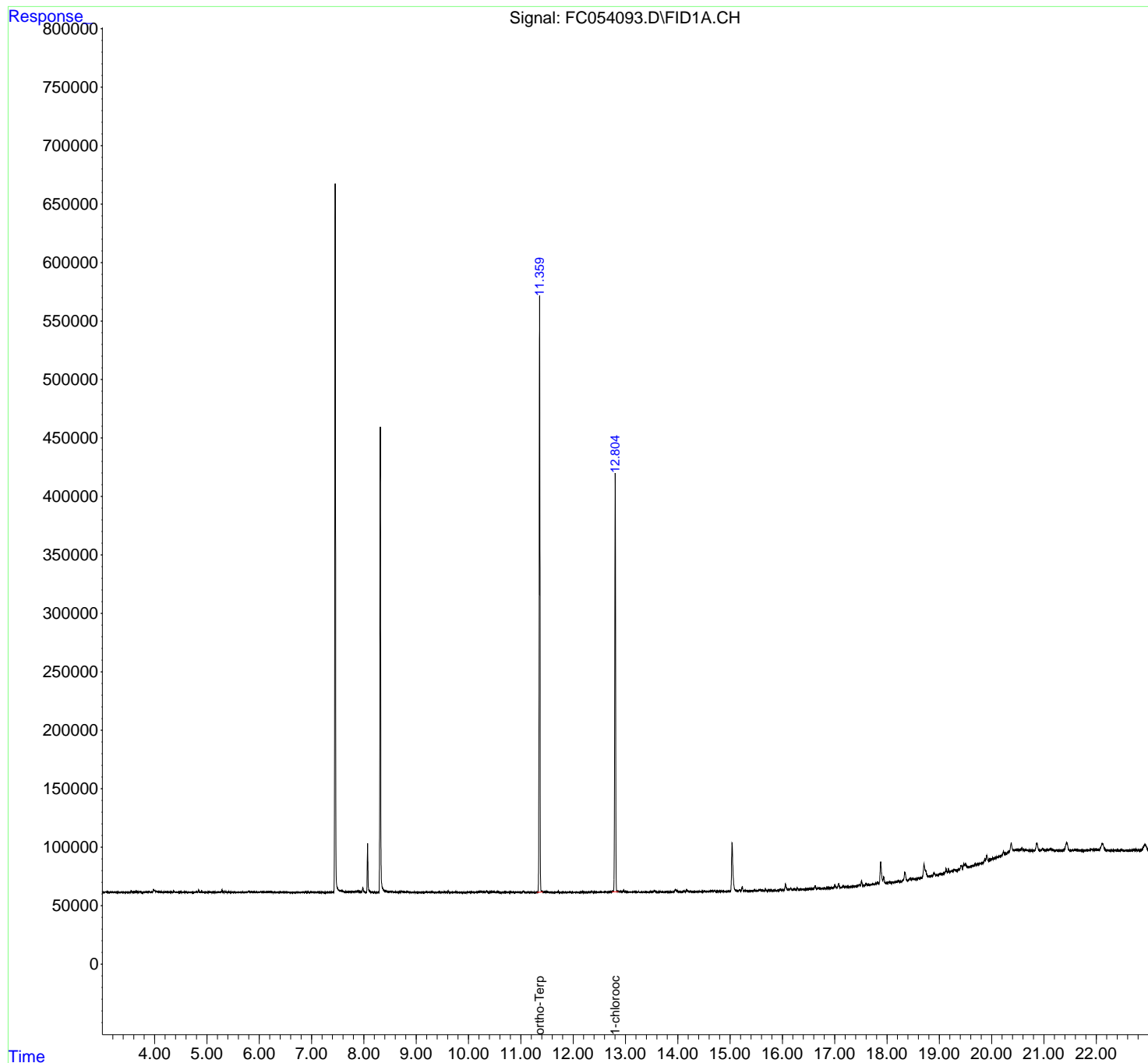
(m)=manual int.

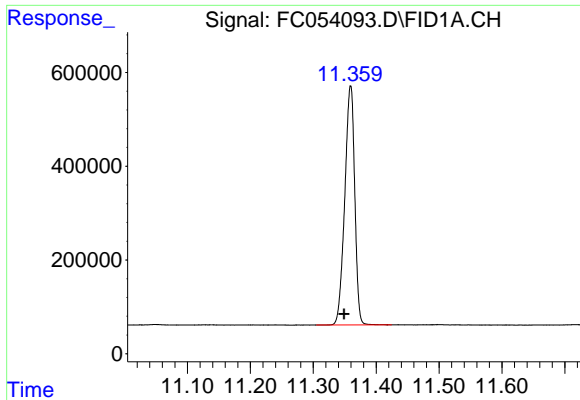
Data Path : Z:\pestpcbsrv\HPCHEM1\FID_C\Data\FC060721AL\
Data File : FC054093.D
Signal(s) : FID1A.CH
Acq On : 07 Jun 2021 20:26
Operator : DD\AJ
Sample : M2613-02
Misc :
ALS Vial : 16 Sample Multiplier: 1

Instrument :
FID_C
ClientSampled :
18-B12(90-94)

Integration File: autoint1.e
Quant Time: Jun 08 02:59:05 2021
Quant Method : Z:\pestpcbsrv\HPCHEM1\FID_C\Method\Alaphatic EPH 052721.M
Quant Title : GC Extractables
QLast Update : Fri May 28 09:04:47 2021
Response via : Initial Calibration
Integrator: ChemStation 6890 Scale Mode: Large solvent peaks clipped

Volume Inj. : 1 ul
Signal Phase : Rxi-1ms
Signal Info : 20M x 0.18mm x 0.18um

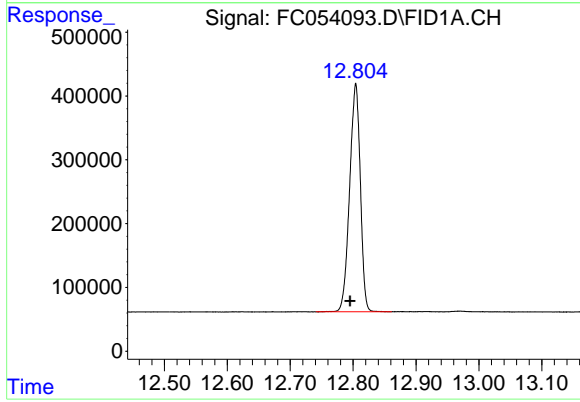




#9 ortho-Terphenyl (SURR)

R.T.: 11.359 min
Delta R.T.: 0.010 min
Response: 5607724
Conc: 40.16 ug/ml

Instrument :
FID_C
ClientSampleId :
18-B12(90-94)



#12 1-chlorooctadecane (SURR)

R.T.: 12.804 min
Delta R.T.: 0.009 min
Response: 4225699
Conc: 37.69 ug/ml