

Data Path : Z:\pestpcbsrv\HPCHEM1\FID_C\Data\FC060821AL\
 Data File : FC054137.D
 Signal(s) : FID1A.CH
 Acq On : 09 Jun 2021 5:49
 Operator : DD\AJ
 Sample : 20 PPM ALIPHATIC HC STD
 Misc :
 ALS Vial : 2 Sample Multiplier: 1

Integration File: autoint1.e
 Quant Time: Jun 09 09:33:23 2021
 Quant Method : Z:\pestpcbsrv\HPCHEM1\FID_C\Method\Alaphatic EPH 052721.M
 Quant Title : GC Extractables
 QLast Update : Fri May 28 09:04:47 2021
 Response via : Initial Calibration
 Integrator: ChemStation 6890 Scale Mode: Large solvent peaks clipped

Volume Inj. : 1 ul
 Signal Phase : Rxi-1ms
 Signal Info : 20M x 0.18mm x 0.18um

Compound	R.T.	Response	Conc Units

System Monitoring Compounds			
9) S ortho-Terphenyl (SURR)	11.358	2808888	20.117 ug/ml
Spiked Amount	50.000	Recovery	= 40.23%
12) S 1-chlorooctadecane (S...	12.802	2162601	19.289 ug/ml
Spiked Amount	50.000	Recovery	= 38.58%
Target Compounds			
1) T n-Nonane (C9)	3.163	2614060	22.126 ug/ml
2) T n-Decane (C10)	4.220	2670487	22.405 ug/ml
3) T A~Naphthalene (C11.7)	5.788	2936812	22.455 ug/ml
4) T n-Dodecane (C12)	6.229	2722389	22.176 ug/ml
5) T A~2-methylnaphthalene...	6.841	2993074	22.421 ug/ml
6) T n-Tetradecane (C14)	8.018	2737522	22.070 ug/ml
7) T n-Hexadecane (C16)	9.615	2670430	21.433 ug/ml
8) T n-Octadecane (C18)	11.053	2728730	20.717 ug/ml
10) T n-Eicosane (C20)	12.361	2667090	19.898 ug/ml
11) T n-Heneicosane (C21)	12.971	2614722	19.495 ug/ml
13) T n-Docosane (C22)	13.557	2584716	19.231 ug/ml
14) T n-Tetracosane (C24)	14.658	2508589	18.683 ug/ml
15) T n-Hexacosane (C26)	15.678	2414672	18.219 ug/ml
16) T n-Octacosane (C28)	16.626	2418070	18.313 ug/ml
17) T n-Tricontane (C30)	17.514	2487014	18.967 ug/ml
18) T n-Dotriacontane (C32)	18.345	2494760	19.339 ug/ml
19) T n-Tetratriacontane (C34)	19.129	2419428	19.832 ug/ml
20) T n-Hexatriacontane (C36)	19.869	2305204	20.418 ug/ml
21) T n-Octatriacontane (C38)	20.573	2161064	21.433 ug/mlm
22) T n-Tetracontane (C40)	21.409	2189938	21.699 ug/ml

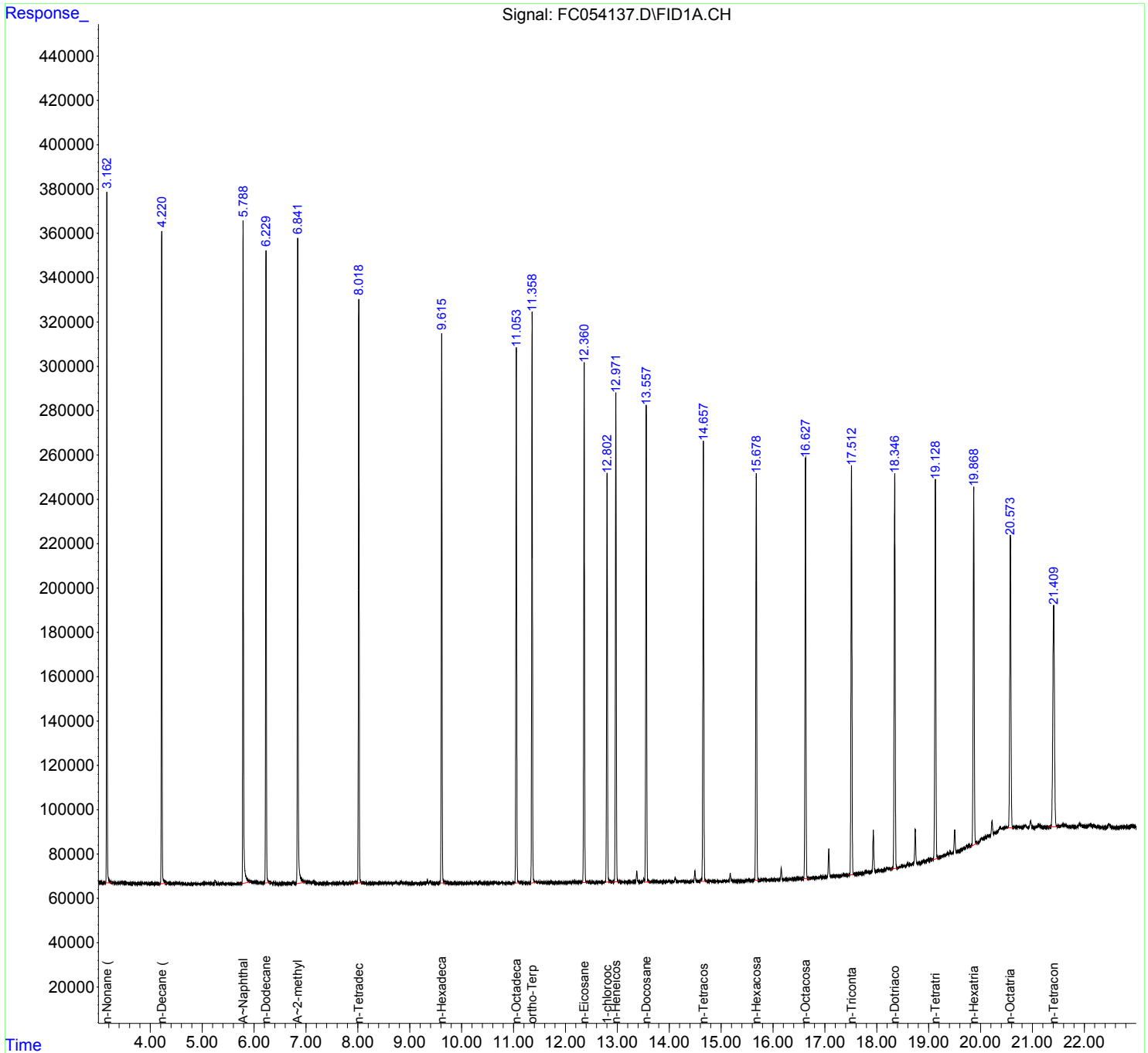
(f)=RT Delta > 1/2 Window

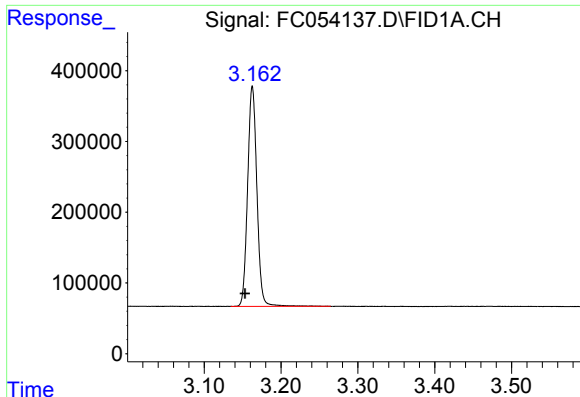
(m)=manual int.

Data Path : Z:\pestpcbsrv\HPCHEM1\FID_C\Data\FC060821AL\
 Data File : FC054137.D
 Signal(s) : FID1A.CH
 Acq On : 09 Jun 2021 5:49
 Operator : DD\AJ
 Sample : 20 PPM ALIPHATIC HC STD
 Misc :
 ALS Vial : 2 Sample Multiplier: 1

Integration File: autoint1.e
 Quant Time: Jun 09 09:33:23 2021
 Quant Method : Z:\pestpcbsrv\HPCHEM1\FID_C\Method\Aliphatic EPH 052721.M
 Quant Title : GC Extractables
 QLast Update : Fri May 28 09:04:47 2021
 Response via : Initial Calibration
 Integrator: ChemStation 6890 Scale Mode: Large solvent peaks clipped

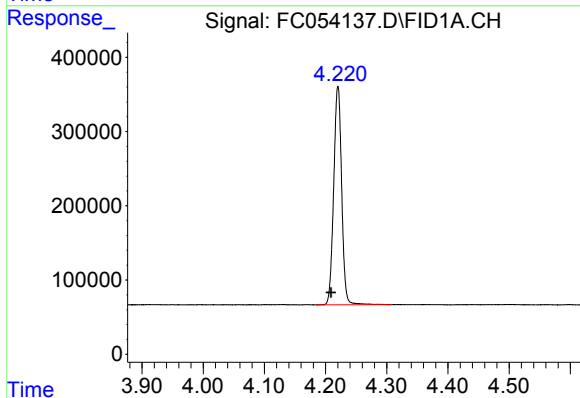
Volume Inj. : 1 ul
 Signal Phase : Rxi-1ms
 Signal Info : 20M x 0.18mm x 0.18um





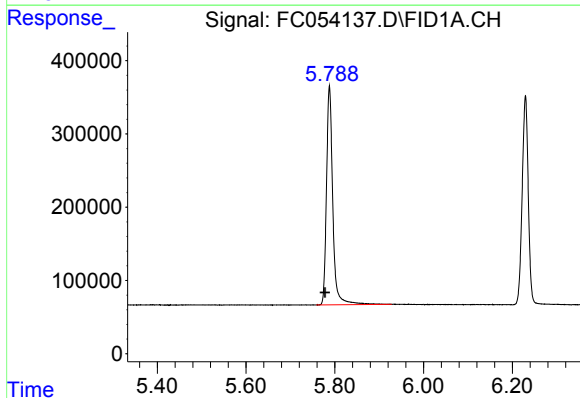
#1 n-Nonane (C9)

R.T.: 3.163 min
Delta R.T.: 0.010 min
Response: 2614060
Conc: 22.13 ug/ml



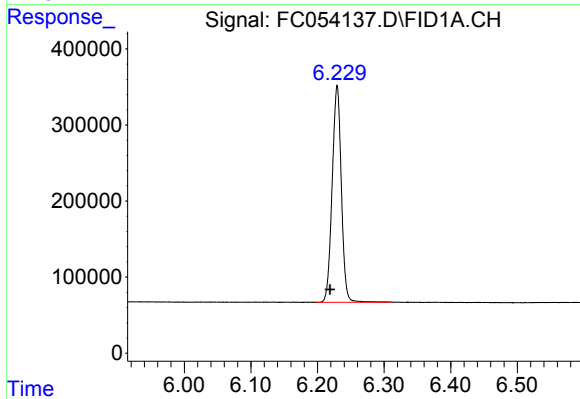
#2 n-Decane (C10)

R.T.: 4.220 min
Delta R.T.: 0.011 min
Response: 2670487
Conc: 22.41 ug/ml



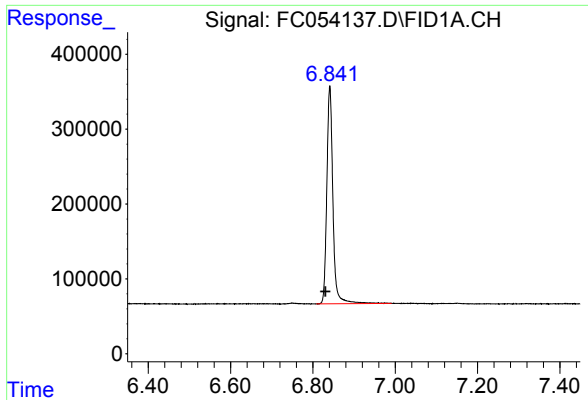
#3 A~Naphthalene (C11.7)

R.T.: 5.788 min
Delta R.T.: 0.010 min
Response: 2936812
Conc: 22.46 ug/ml



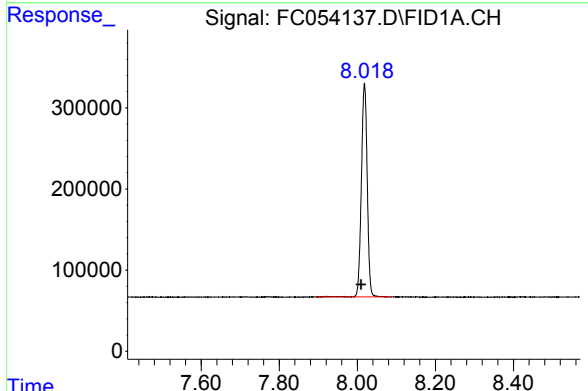
#4 n-Dodecane (C12)

R.T.: 6.229 min
Delta R.T.: 0.010 min
Response: 2722389
Conc: 22.18 ug/ml



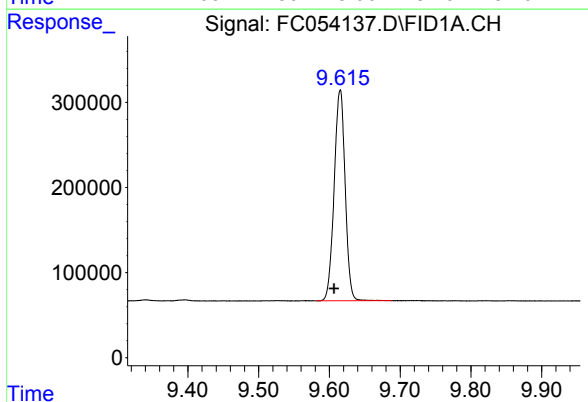
#5 A~2-methylnaphthalene (C12.89)

R.T.: 6.841 min
Delta R.T.: 0.010 min
Response: 2993074
Conc: 22.42 ug/ml



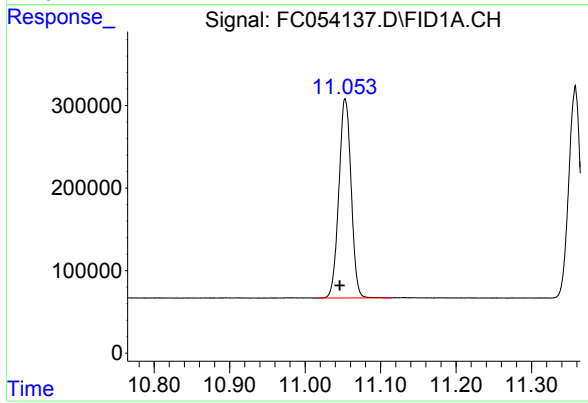
#6 n-Tetradecane (C14)

R.T.: 8.018 min
Delta R.T.: 0.009 min
Response: 2737522
Conc: 22.07 ug/ml



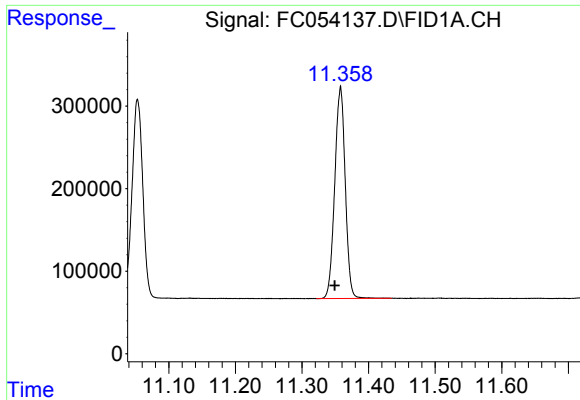
#7 n-Hexadecane (C16)

R.T.: 9.615 min
Delta R.T.: 0.008 min
Response: 2670430
Conc: 21.43 ug/ml



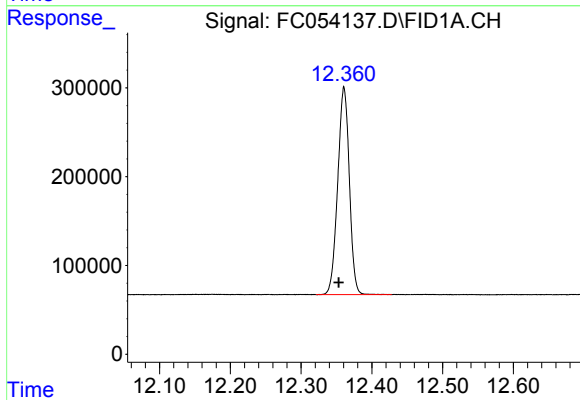
#8 n-Octadecane (C18)

R.T.: 11.053 min
Delta R.T.: 0.007 min
Response: 2728730
Conc: 20.72 ug/ml



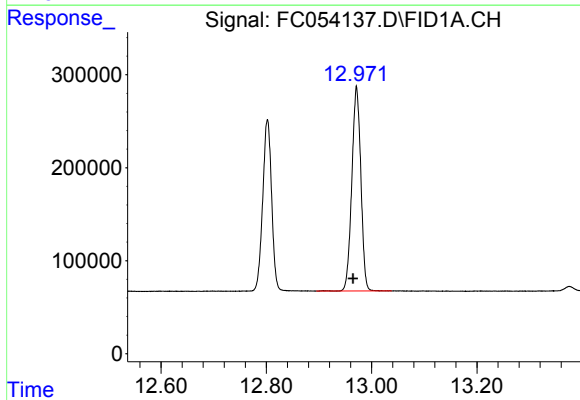
#9 ortho-Terphenyl (SURR)

R.T.: 11.358 min
 Delta R.T.: 0.009 min
 Response: 2808888
 Conc: 20.12 ug/ml



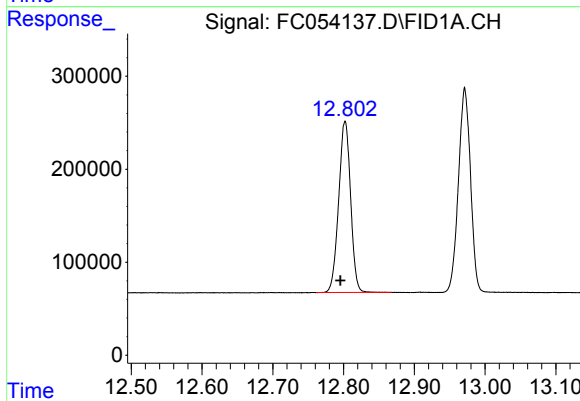
#10 n-Eicosane (C20)

R.T.: 12.361 min
 Delta R.T.: 0.008 min
 Response: 2667090
 Conc: 19.90 ug/ml



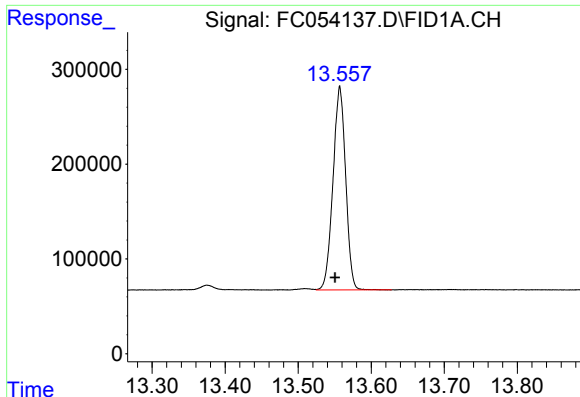
#11 n-Heneicosane (C21)

R.T.: 12.971 min
 Delta R.T.: 0.007 min
 Response: 2614722
 Conc: 19.49 ug/ml



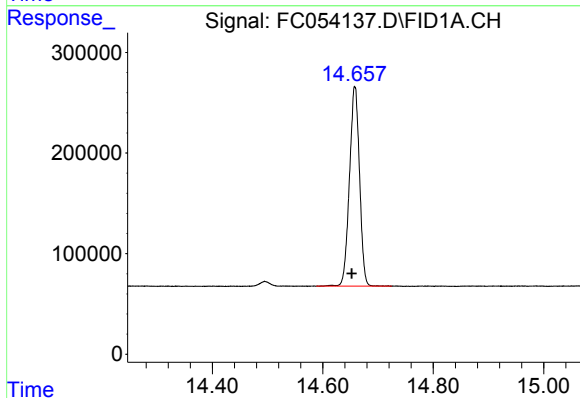
#12 1-chlorooctadecane (SURR)

R.T.: 12.802 min
 Delta R.T.: 0.007 min
 Response: 2162601
 Conc: 19.29 ug/ml



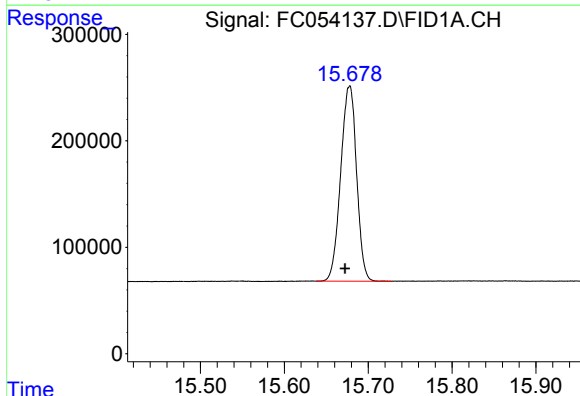
#13 n-Docosane (C22)

R.T.: 13.557 min
Delta R.T.: 0.007 min
Response: 2584716
Conc: 19.23 ug/ml



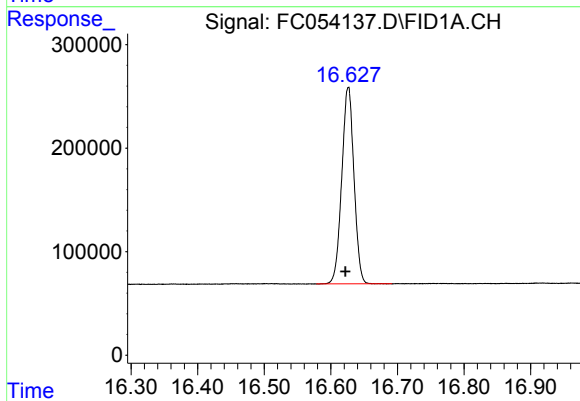
#14 n-Tetracosane (C24)

R.T.: 14.658 min
Delta R.T.: 0.006 min
Response: 2508589
Conc: 18.68 ug/ml



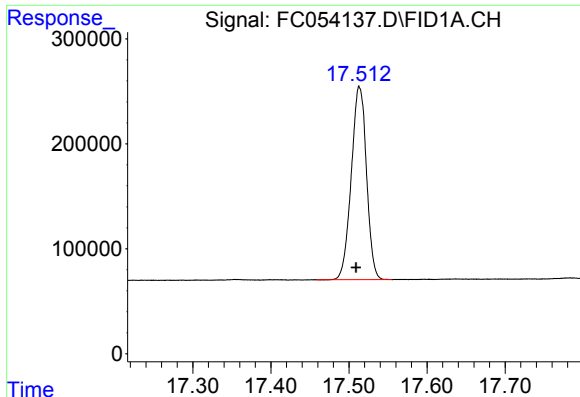
#15 n-Hexacosane (C26)

R.T.: 15.678 min
Delta R.T.: 0.005 min
Response: 2414672
Conc: 18.22 ug/ml



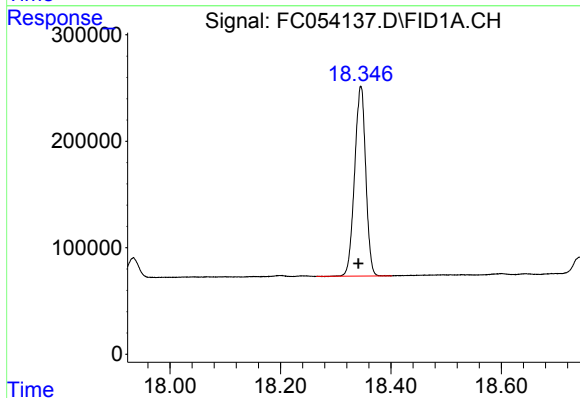
#16 n-Octacosane (C28)

R.T.: 16.626 min
Delta R.T.: 0.004 min
Response: 2418070
Conc: 18.31 ug/ml



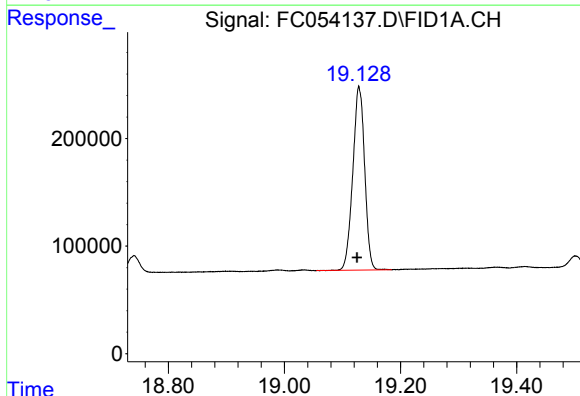
#17 n-Tricontane (C30)

R.T.: 17.514 min
Delta R.T.: 0.005 min
Response: 2487014
Conc: 18.97 ug/ml



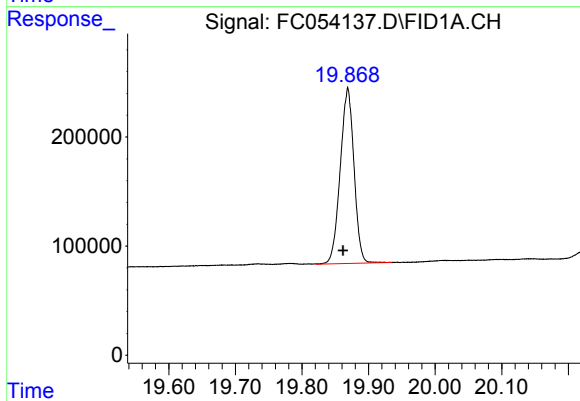
#18 n-Dotriacontane (C32)

R.T.: 18.345 min
Delta R.T.: 0.004 min
Response: 2494760
Conc: 19.34 ug/ml



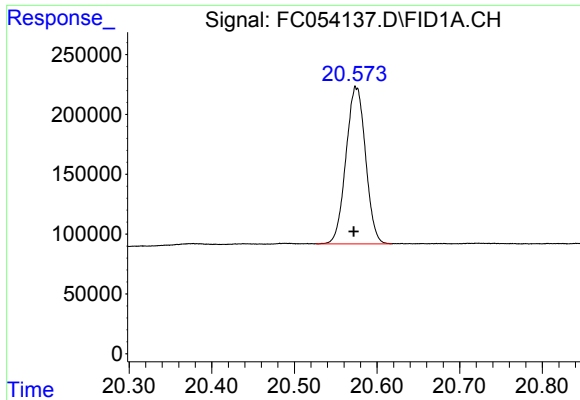
#19 n-Tetratriacontane (C34)

R.T.: 19.129 min
Delta R.T.: 0.003 min
Response: 2419428
Conc: 19.83 ug/ml



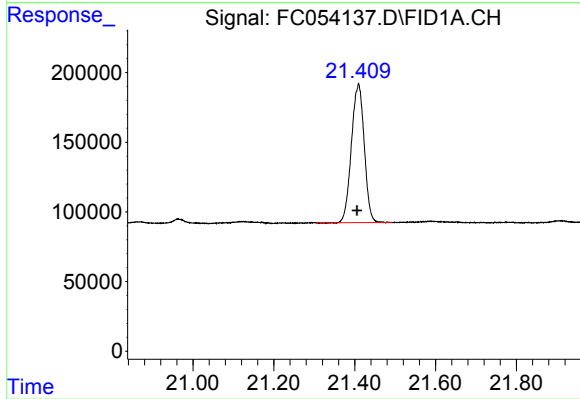
#20 n-Hexatriacontane (C36)

R.T.: 19.869 min
Delta R.T.: 0.007 min
Response: 2305204
Conc: 20.42 ug/ml



#21 n-Octatriacontane (C38)

R.T.: 20.573 min
Delta R.T.: 0.001 min
Response: 2161064
Conc: 21.43 ug/ml m



#22 n-Tetracontane (C40)

R.T.: 21.409 min
Delta R.T.: 0.004 min
Response: 2189938
Conc: 21.70 ug/ml