

Data Path : Z:\pestpcbsrv\HPCHEM1\FID\_C\Data\FC060823AL\  
 Data File : FC063792.D  
 Signal(s) : FID1A.ch  
 Acq On : 08 Jun 2023 18:24  
 Operator : YP/AJ  
 Sample : 03067-06  
 Misc :  
 ALS Vial : 19 Sample Multiplier: 1

Instrument :  
 FID\_C  
 ClientSampleId :

Integration File: autoint1.e  
 Quant Time: Jun 09 01:27:24 2023  
 Quant Method : Z:\pestpcbsrv\HPCHEM1\FID\_C\Method\Aliphatic EPH 052723.M  
 Quant Title : GC Extractables  
 QLast Update : Sat May 27 06:12:33 2023  
 Response via : Initial Calibration  
 Integrator: ChemStation

Volume Inj. : 1 ul  
 Signal Phase : Rxi-1ms  
 Signal Info : 20M x 0.18mm x 0.18um

Compound	R.T.	Response	Conc Units
-----			
System Monitoring Compounds			
9) S ortho-Terphenyl (SURR)	11.538	5774548	31.644 ug/ml
Spiked Amount	50.000	Recovery	= 63.29%
12) S 1-chlorooctadecane (S...	12.972	3799525	29.737 ug/ml
Spiked Amount	50.000	Recovery	= 59.47%
Target Compounds			
3) T A~Naphthalene (C11.7)	5.961	174901	1.007 ug/ml
5) T A~2-methylnaphthalene...	6.949f	302657	1.847 ug/ml
6) T n-Tetradecane (C14)	8.142	113975	0.725 ug/ml
7) T n-Hexadecane (C16)	9.787	208099	1.308 ug/ml
-----			

(f)=RT Delta > 1/2 Window

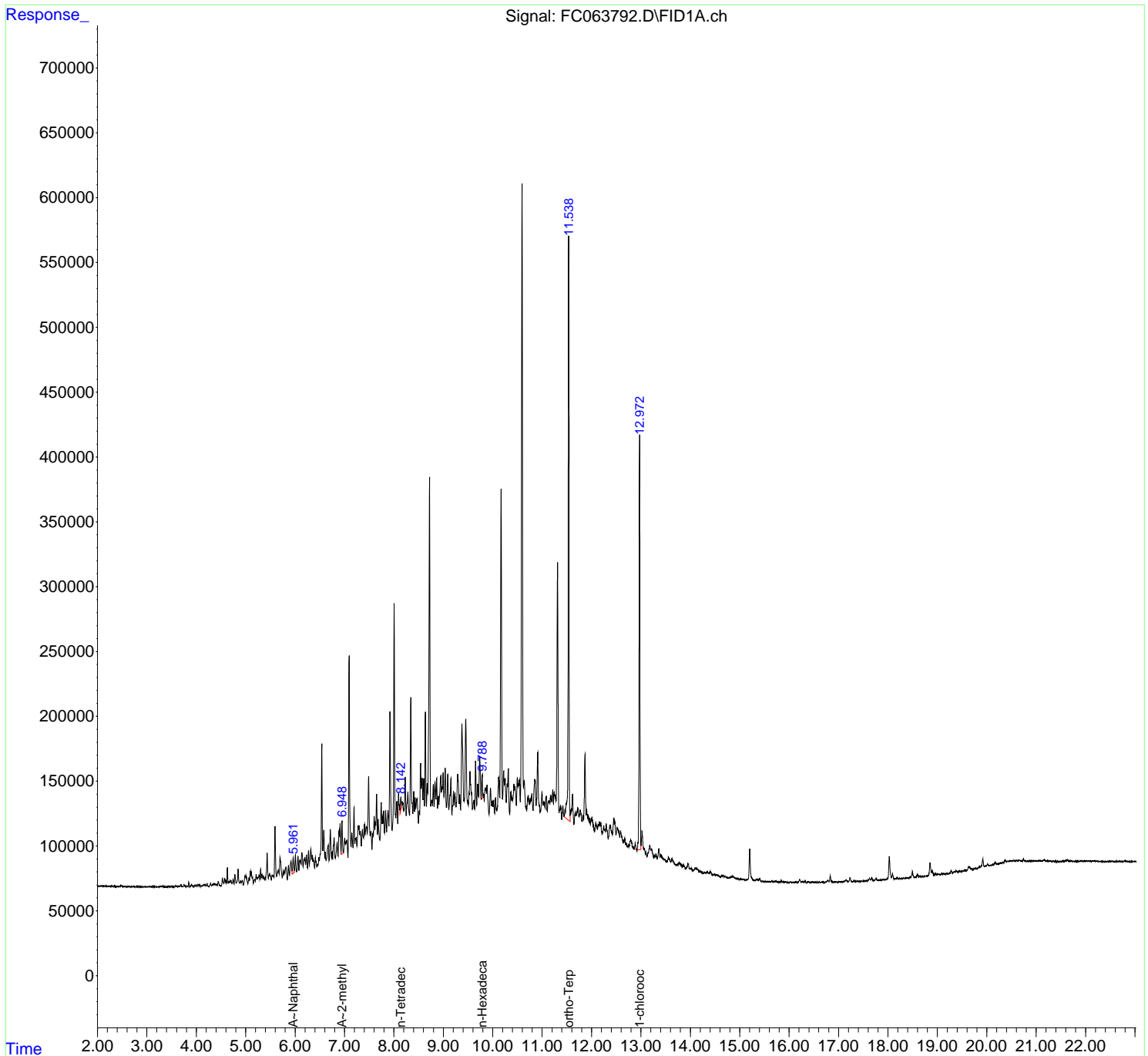
(m)=manual int.

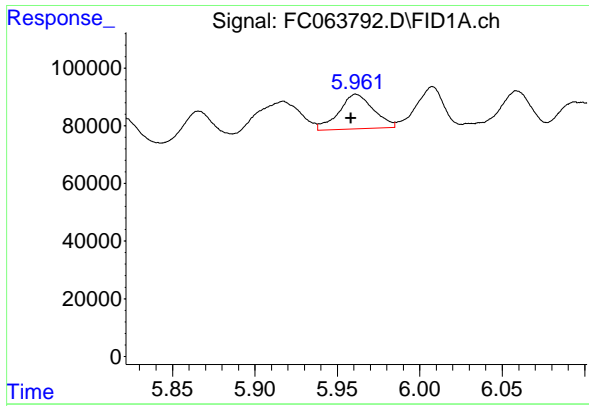
Data Path : Z:\pestpcbsrv\HPCHEM1\FID\_C\Data\FC060823AL\  
 Data File : FC063792.D  
 Signal(s) : FID1A.ch  
 Acq On : 08 Jun 2023 18:24  
 Operator : YP/AJ  
 Sample : 03067-06  
 Misc :  
 ALS Vial : 19 Sample Multiplier: 1

Instrument :  
 FID\_C  
 ClientSampleId :

Integration File: autoint1.e  
 Quant Time: Jun 09 01:27:24 2023  
 Quant Method : Z:\pestpcbsrv\HPCHEM1\FID\_C\Method\Aliphatic EPH 052723.M  
 Quant Title : GC Extractables  
 QLast Update : Sat May 27 06:12:33 2023  
 Response via : Initial Calibration  
 Integrator: ChemStation

Volume Inj. : 1 ul  
 Signal Phase : Rxi-1ms  
 Signal Info : 20M x 0.18mm x 0.18um

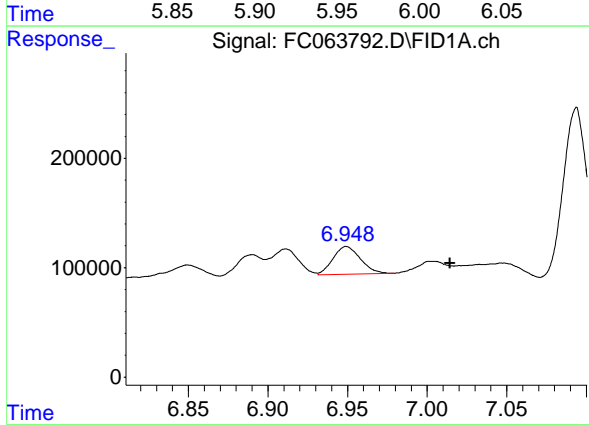




#3 A~Naphthalene (C11.7)

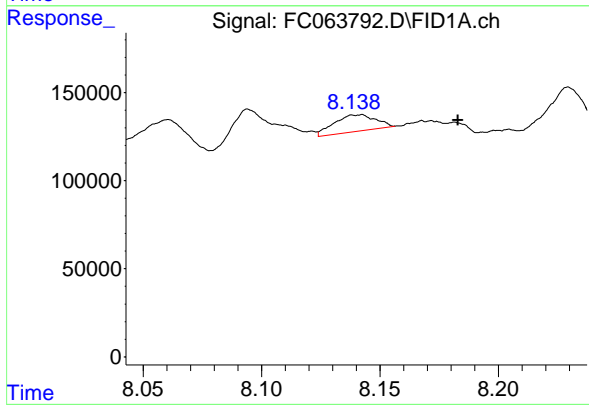
R.T.: 5.961 min  
 Delta R.T.: 0.003 min  
 Response: 174901  
 Conc: 1.01 ug/ml

Instrument : FID\_C  
 ClientSampleId :



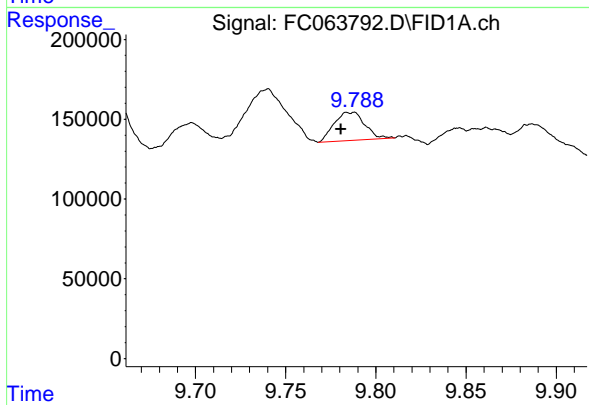
#5 A~2-methylnaphthalene (C12.89)

R.T.: 6.949 min  
 Delta R.T.: -0.065 min  
 Response: 302657  
 Conc: 1.85 ug/ml



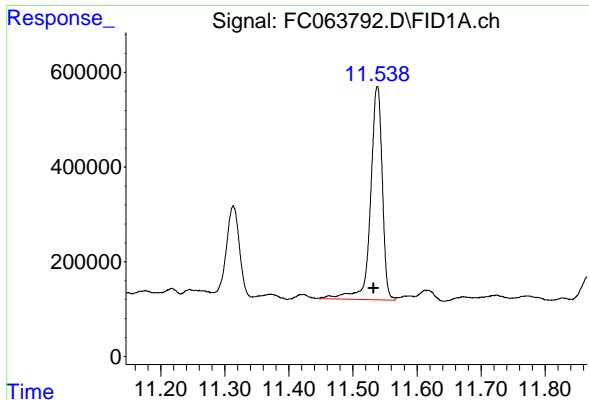
#6 n-Tetradecane (C14)

R.T.: 8.142 min  
 Delta R.T.: -0.041 min  
 Response: 113975  
 Conc: 0.72 ug/ml



#7 n-Hexadecane (C16)

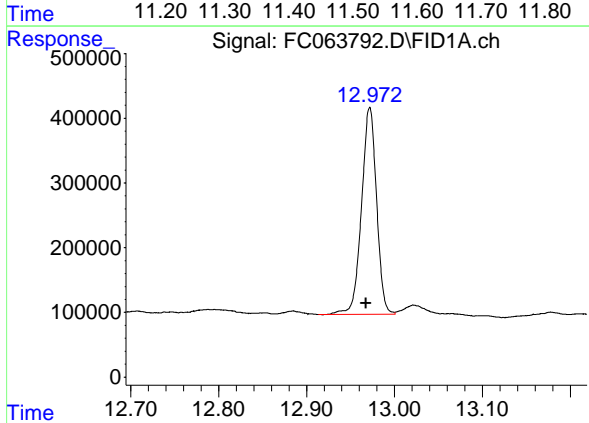
R.T.: 9.787 min  
 Delta R.T.: 0.006 min  
 Response: 208099  
 Conc: 1.31 ug/ml



#9 ortho-Terphenyl (SURR)

R.T.: 11.538 min  
Delta R.T.: 0.005 min  
Response: 5774548  
Conc: 31.64 ug/ml

Instrument :  
FID\_C  
ClientSampleId :



#12 1-chlorooctadecane (SURR)

R.T.: 12.972 min  
Delta R.T.: 0.004 min  
Response: 3799525  
Conc: 29.74 ug/ml