

Data Path : Z:\pestpcbsrv\HPCHEM1\FID_C\Data\FC060823AL\
 Data File : FC063789.D
 Signal(s) : FID1A.ch
 Acq On : 08 Jun 2023 16:26
 Operator : YP/AJ
 Sample : 03067-03
 Misc :
 ALS Vial : 16 Sample Multiplier: 1

Instrument :
 FID_C
ClientSampleId :
 DT-03

Manual Integrations
APPROVED

Reviewed By :Yogesh Patel 06/09/2023
 Supervised By :Ankita Jodhani 06/09/2023

Integration File: autoint1.e
 Quant Time: Jun 09 01:27:08 2023
 Quant Method : Z:\pestpcbsrv\HPCHEM1\FID_C\Method\Aliphatic EPH 052723.M
 Quant Title : GC Extractables
 QLast Update : Sat May 27 06:12:33 2023
 Response via : Initial Calibration
 Integrator: ChemStation

Volume Inj. : 1 ul
 Signal Phase : Rxi-1ms
 Signal Info : 20M x 0.18mm x 0.18um

Compound	R.T.	Response	Conc Units

System Monitoring Compounds			
9) S ortho-Terphenyl (SURR)	11.546	5701189	31.242 ug/mlm
Spiked Amount	50.000	Recovery =	62.48%
12) S 1-chlorooctadecane (S...	12.978	3426332	26.816 ug/mlm
Spiked Amount	50.000	Recovery =	53.63%

Target Compounds

(f)=RT Delta > 1/2 Window

(m)=manual int.

Data Path : Z:\pestpcbsrv\HPCHEM1\FID_C\Data\FC060823AL\
Data File : FC063789.D
Signal(s) : FID1A.ch
Acq On : 08 Jun 2023 16:26
Operator : YP/AJ
Sample : 03067-03
Misc :
ALS Vial : 16 Sample Multiplier: 1

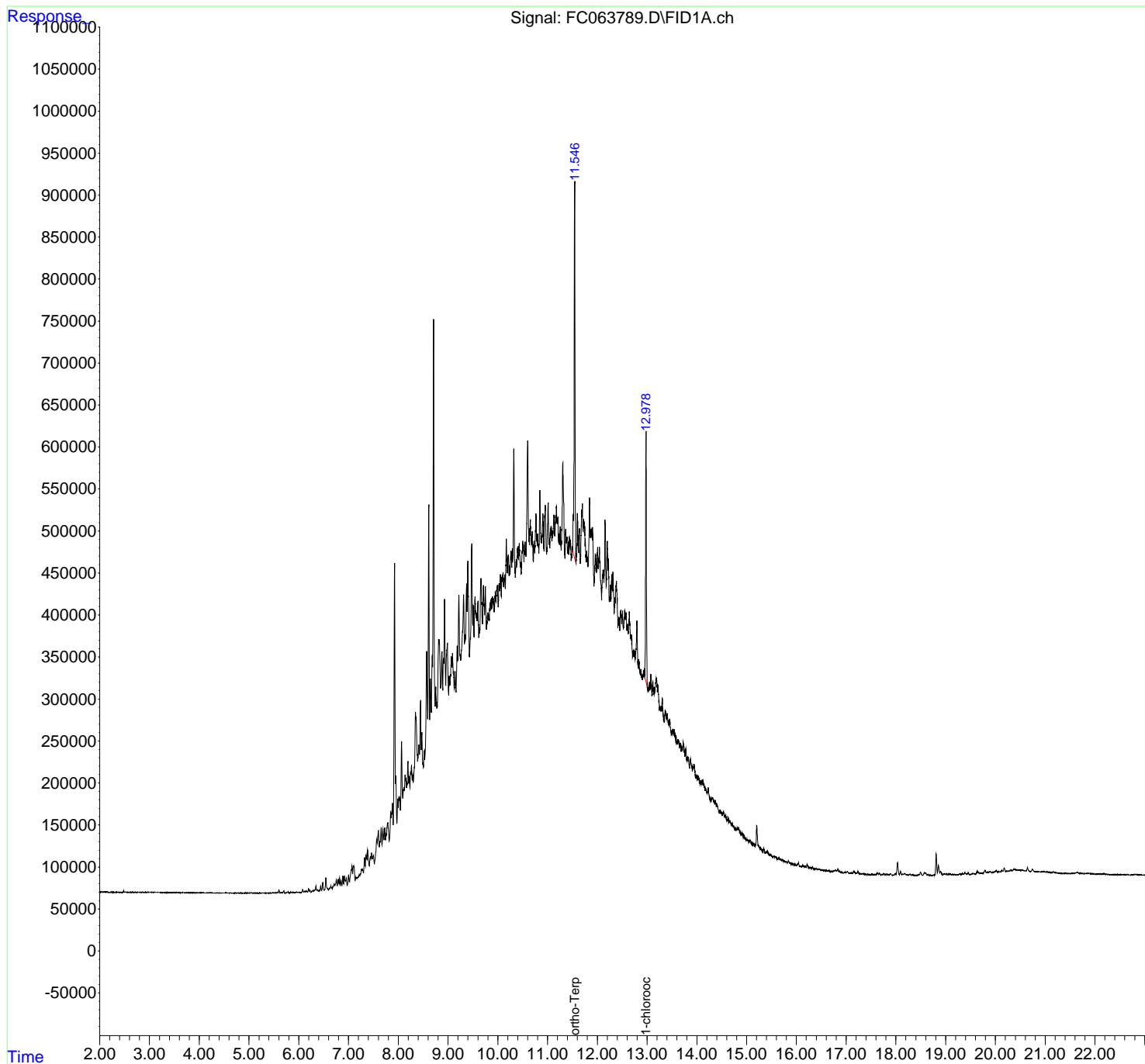
Instrument :
FID_C
ClientSampleId :
DT-03

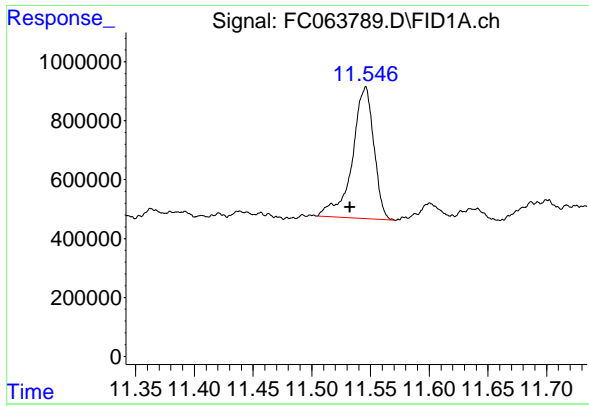
Manual Integrations
APPROVED

Reviewed By :Yogesh Patel 06/09/2023
Supervised By :Ankita Jodhani 06/09/2023

Integration File: autoint1.e
Quant Time: Jun 09 01:27:08 2023
Quant Method : Z:\pestpcbsrv\HPCHEM1\FID_C\Method\Aliphatic EPH 052723.M
Quant Title : GC Extractables
QLast Update : Sat May 27 06:12:33 2023
Response via : Initial Calibration
Integrator: ChemStation

Volume Inj. : 1 ul
Signal Phase : Rxi-1ms
Signal Info : 20M x 0.18mm x 0.18um





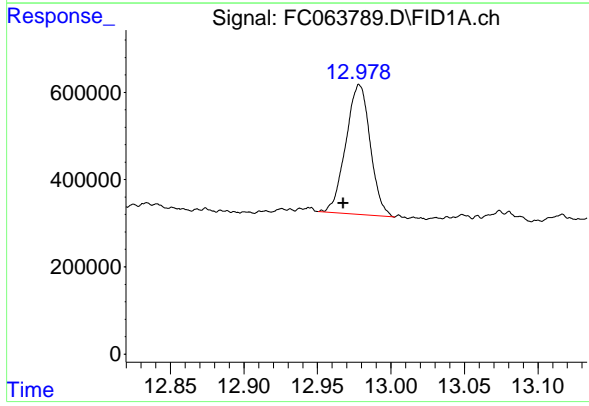
#9 ortho-Terphenyl (SURR)

R.T.: 11.546 min
 Delta R.T.: 0.013 min
 Response: 5701189
 Conc: 31.24 ug/ml

Instrument :
 FID_C
 ClientSampleId :
 DT-03

Manual Integrations
 APPROVED

Reviewed By :Yogesh Patel 06/09/2023
 Supervised By :Ankita Jodhani 06/09/2023



#12 1-chlorooctadecane (SURR)

R.T.: 12.978 min
 Delta R.T.: 0.010 min
 Response: 3426332
 Conc: 26.82 ug/ml m