

Data Path : Z:\pestpcbsrv\HPCHEM1\FID_C\Data\FC060922AL\
 Data File : FC060180.D
 Signal(s) : FID1A.CH
 Acq On : 09 Jun 2022 18:51
 Operator : UA/NP
 Sample : N3234-02
 Misc :
 ALS Vial : 11 Sample Multiplier: 1

Integration File: autoint1.e
 Quant Time: Jun 10 02:11:51 2022
 Quant Method : Z:\pestpcbsrv\HPCHEM1\FID_C\Method\Aliphatic EPH 052722.M
 Quant Title : GC Extractables
 QLast Update : Sat May 28 08:22:04 2022
 Response via : Initial Calibration
 Integrator: ChemStation 6890 Scale Mode: Large solvent peaks clipped

Volume Inj. : 1 ul
 Signal Phase : Rxi-1ms
 Signal Info : 20M x 0.18mm x 0.18um

Compound	R.T.	Response	Conc Units

System Monitoring Compounds			
9) S ortho-Terphenyl (SURR)	10.647	5354324	34.406 ug/ml
Spiked Amount	50.000	Recovery	= 68.81%
12) S 1-chlorooctadecane (S...	12.017	4400641	35.492 ug/ml
Spiked Amount	50.000	Recovery	= 70.98%

Target Compounds

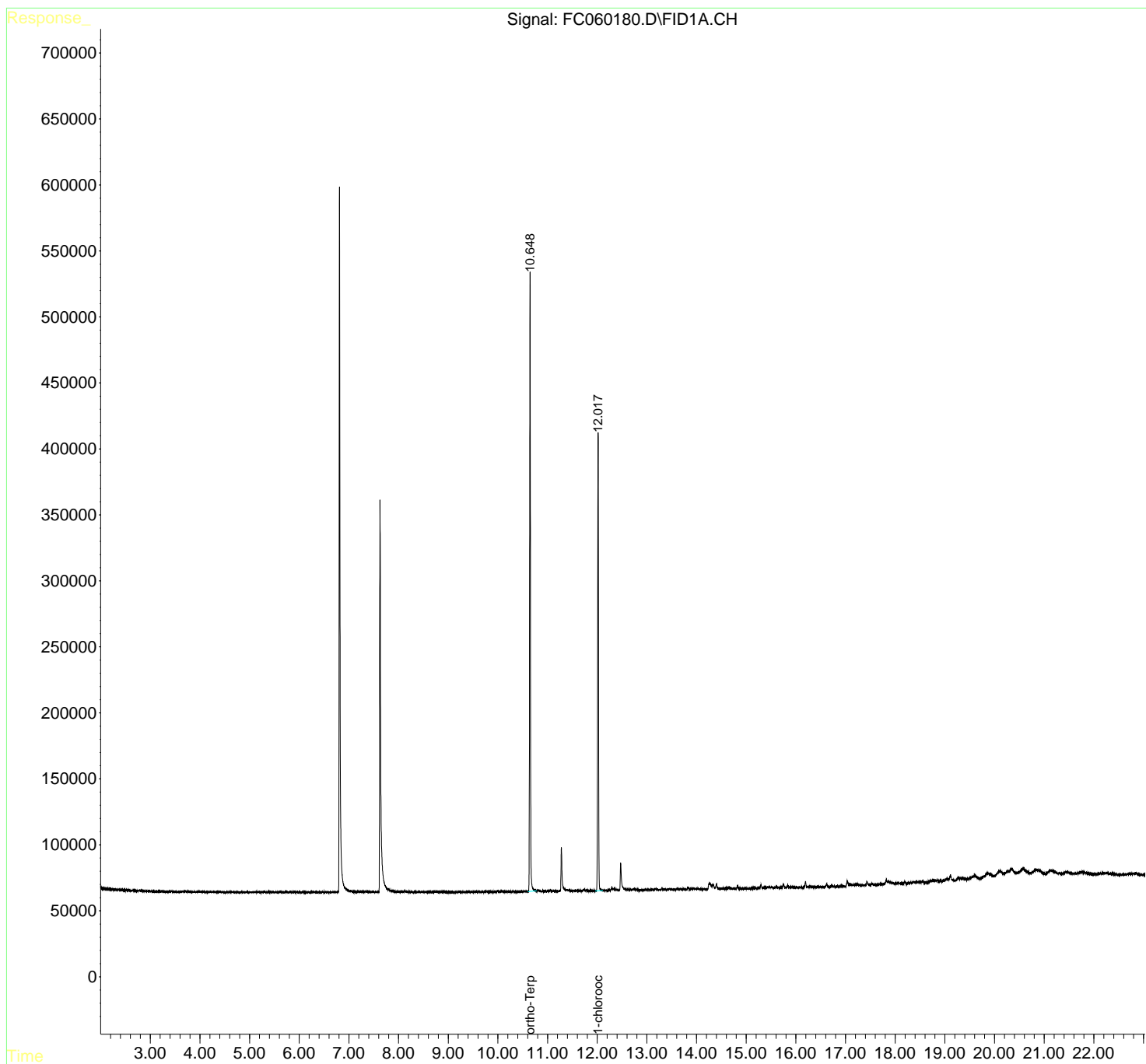
(f)=RT Delta > 1/2 Window

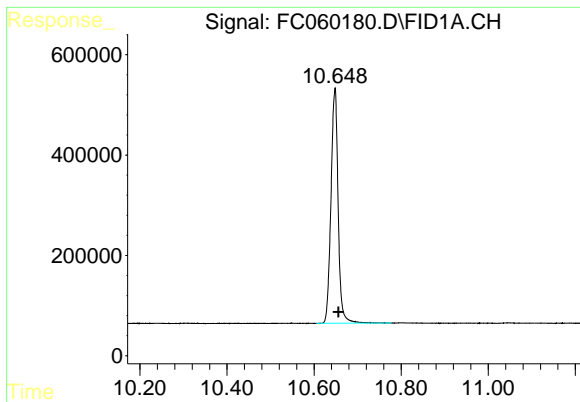
(m)=manual int.

Data Path : Z:\pestpcbsrv\HPCHEM1\FID_C\Data\FC060922AL\
Data File : FC060180.D
Signal(s) : FID1A.CH
Acq On : 09 Jun 2022 18:51
Operator : UA/NP
Sample : N3234-02
Misc :
ALS Vial : 11 Sample Multiplier: 1

Integration File: autoint1.e
Quant Time: Jun 10 02:11:51 2022
Quant Method : Z:\pestpcbsrv\HPCHEM1\FID_C\Method\Aliphatic EPH 052722.M
Quant Title : GC Extractables
QLast Update : Sat May 28 08:22:04 2022
Response via : Initial Calibration
Integrator: ChemStation 6890 Scale Mode: Large solvent peaks clipped

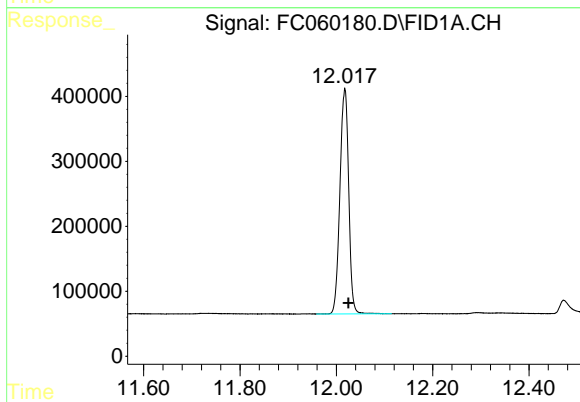
Volume Inj. : 1 ul
Signal Phase : Rxi-1ms
Signal Info : 20M x 0.18mm x 0.18um





#9 ortho-Terphenyl (SURR)

R.T.: 10.647 min
Delta R.T.: -0.008 min
Response: 5354324
Conc: 34.41 ug/ml



#12 1-chlorooctadecane (SURR)

R.T.: 12.017 min
Delta R.T.: -0.008 min
Response: 4400641
Conc: 35.49 ug/ml