

Data Path : Z:\pestpcbsrv\HPCHEM1\FID_C\Data\FC061223AL\
 Data File : FC063824.D
 Signal(s) : FID1A.ch
 Acq On : 12 Jun 2023 22:57
 Operator : YP/AJ
 Sample : 20 PPM ALIPHATIC HC STD
 Misc :
 ALS Vial : 2 Sample Multiplier: 1

Instrument :
 FID_C
ClientSampleId :
 20 PPM ALIPHATIC HC STD

Integration File: autoint1.e
 Quant Time: Jun 13 00:18:36 2023
 Quant Method : Z:\pestpcbsrv\HPCHEM1\FID_C\Method\Aliphatic EPH 052723.M
 Quant Title : GC Extractables
 QLast Update : Sat May 27 06:12:33 2023
 Response via : Initial Calibration
 Integrator: ChemStation

Volume Inj. : 1 ul
 Signal Phase : Rxi-1ms
 Signal Info : 20M x 0.18mm x 0.18um

Compound	R.T.	Response	Conc Units

System Monitoring Compounds			
9) S ortho-Terphenyl (SURR)	11.537	3427425	18.782 ug/ml
Spiked Amount	50.000	Recovery =	37.56%
12) S 1-chlorooctadecane (S...	12.972	2466308	19.302 ug/ml
Spiked Amount	50.000	Recovery =	38.60%
Target Compounds			
1) T n-Nonane (C9)	3.313	3063837	19.223 ug/ml
2) T n-Decane (C10)	4.377	3122303	19.315 ug/ml
3) T A~Naphthalene (C11.7)	5.960	3235376	18.623 ug/ml
4) T n-Dodecane (C12)	6.392	3125871	19.117 ug/ml
5) T A~2-methylnaphthalene...	7.015	3094047	18.887 ug/ml
6) T n-Tetradecane (C14)	8.185	3042876	19.348 ug/ml
7) T n-Hexadecane (C16)	9.783	3095618	19.452 ug/ml
8) T n-Octadecane (C18)	11.222	3060808	19.344 ug/ml
10) T n-Eicosane (C20)	12.529	2876818	19.452 ug/ml
11) T n-Heneicosane (C21)	13.139	2782139	19.328 ug/ml
13) T n-Docosane (C22)	13.723	2746423	19.496 ug/ml
14) T n-Tetracosane (C24)	14.823	2685754	19.573 ug/ml
15) T n-Hexacosane (C26)	15.841	2624081	19.790 ug/ml
16) T n-Octacosane (C28)	16.788	2605136	20.517 ug/ml
17) T n-Tricontane (C30)	17.675	2772731	21.702 ug/ml
18) T n-Dotriacontane (C32)	18.504	2793304	22.448 ug/ml
19) T n-Tetratriacontane (C34)	19.286	2710626	21.984 ug/ml
20) T n-Hexatriacontane (C36)	20.023	2591166	21.589 ug/ml
21) T n-Octatriacontane (C38)	20.749	2503582	20.737 ug/ml
22) T n-Tetracontane (C40)	21.646	2505356	20.676 ug/ml

(f)=RT Delta > 1/2 Window

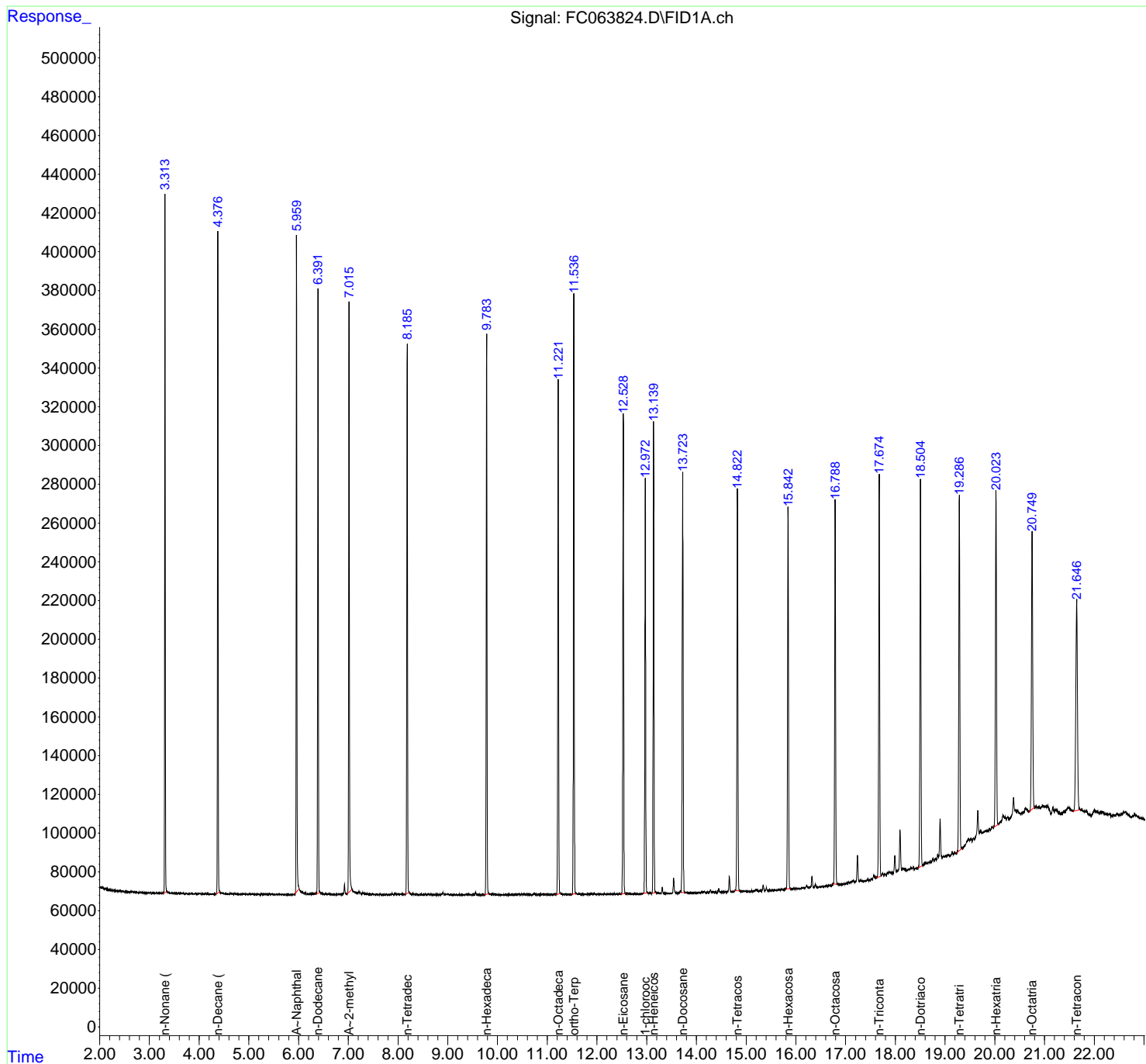
(m)=manual int.

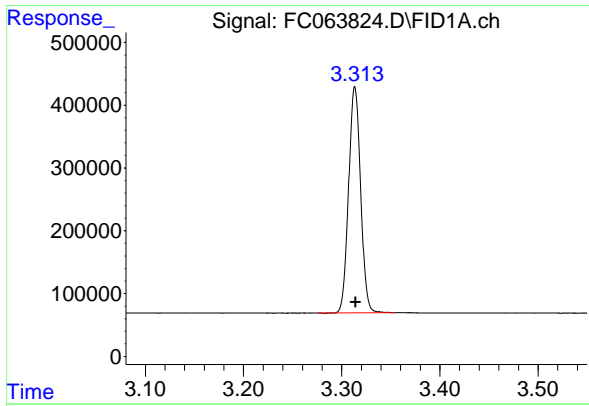
Data Path : Z:\pestpcbsrv\HPCHEM1\FID_C\Data\FC061223AL\
 Data File : FC063824.D
 Signal(s) : FID1A.ch
 Acq On : 12 Jun 2023 22:57
 Operator : YP/AJ
 Sample : 20 PPM ALIPHATIC HC STD
 Misc :
 ALS Vial : 2 Sample Multiplier: 1

Instrument :
 FID_C
 ClientSampleId :
 20 PPM ALIPHATIC HC STD

Integration File: autoint1.e
 Quant Time: Jun 13 00:18:36 2023
 Quant Method : Z:\pestpcbsrv\HPCHEM1\FID_C\Method\Aliphatic EPH 052723.M
 Quant Title : GC Extractables
 QLast Update : Sat May 27 06:12:33 2023
 Response via : Initial Calibration
 Integrator: ChemStation

Volume Inj. : 1 ul
 Signal Phase : Rxi-1ms
 Signal Info : 20M x 0.18mm x 0.18um

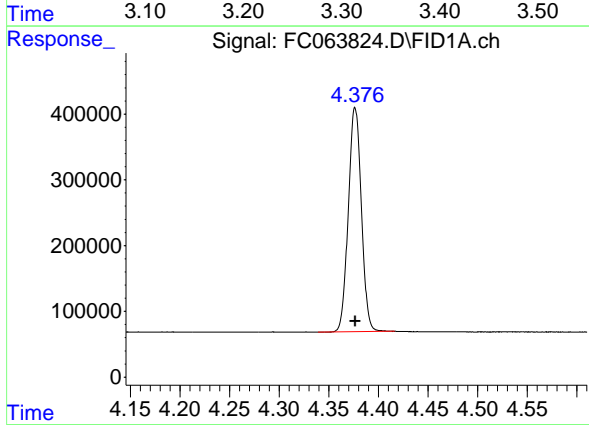




#1 n-Nonane (C9)

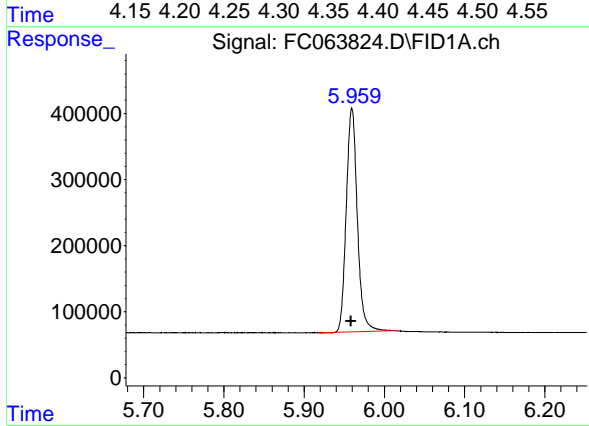
R.T.: 3.313 min
 Delta R.T.: 0.000 min
 Response: 3063837
 Conc: 19.22 ug/ml

Instrument : FID_C
 ClientSampleId : 20 PPM ALIPHATIC HC STD



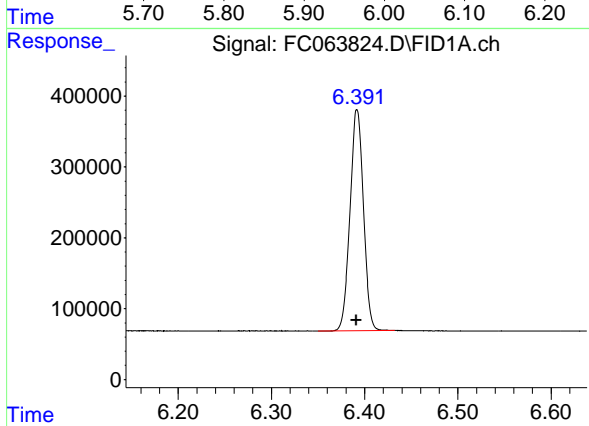
#2 n-Decane (C10)

R.T.: 4.377 min
 Delta R.T.: 0.000 min
 Response: 3122303
 Conc: 19.32 ug/ml



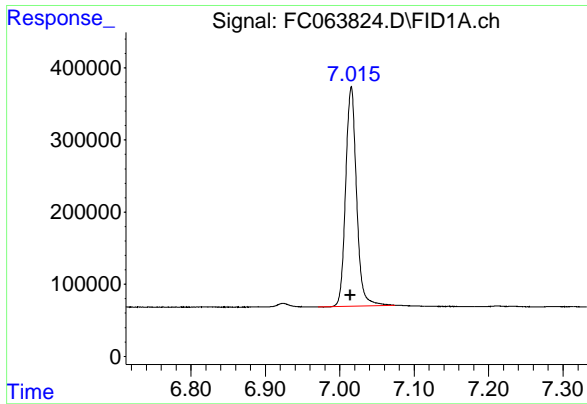
#3 A~Naphthalene (C11.7)

R.T.: 5.960 min
 Delta R.T.: 0.001 min
 Response: 3235376
 Conc: 18.62 ug/ml



#4 n-Dodecane (C12)

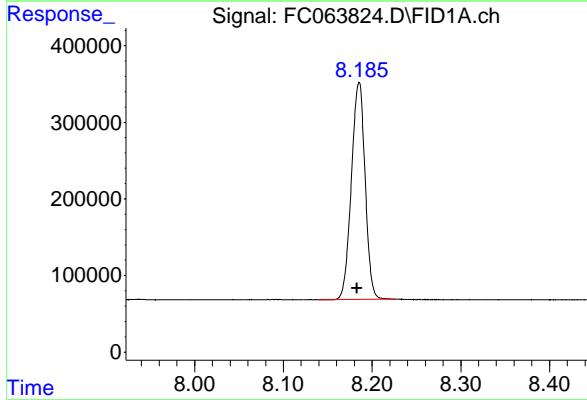
R.T.: 6.392 min
 Delta R.T.: 0.000 min
 Response: 3125871
 Conc: 19.12 ug/ml



#5 A~2-methylnaphthalene (C12.89)

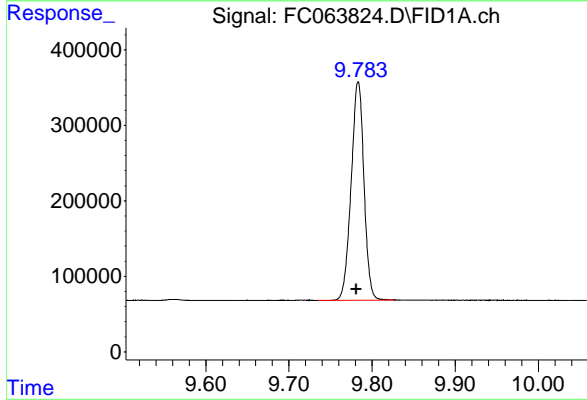
R.T.: 7.015 min
 Delta R.T.: 0.001 min
 Response: 3094047
 Conc: 18.89 ug/ml

Instrument : FID_C
 ClientSampleId : 20 PPM ALIPHATIC HC STD



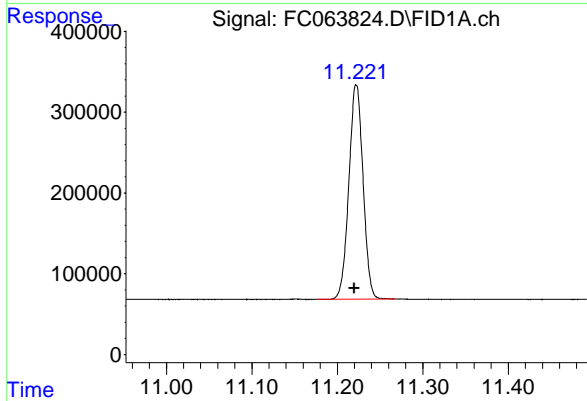
#6 n-Tetradecane (C14)

R.T.: 8.185 min
 Delta R.T.: 0.002 min
 Response: 3042876
 Conc: 19.35 ug/ml



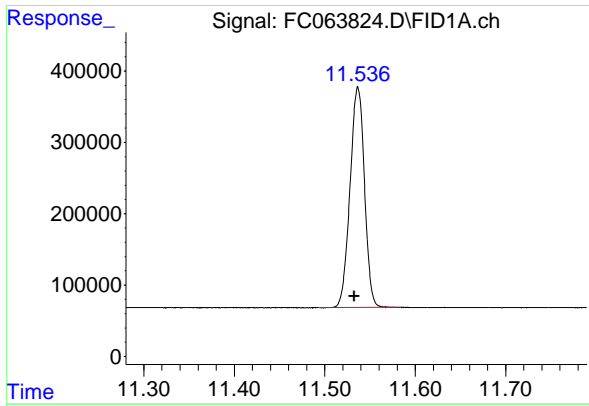
#7 n-Hexadecane (C16)

R.T.: 9.783 min
 Delta R.T.: 0.003 min
 Response: 3095618
 Conc: 19.45 ug/ml



#8 n-Octadecane (C18)

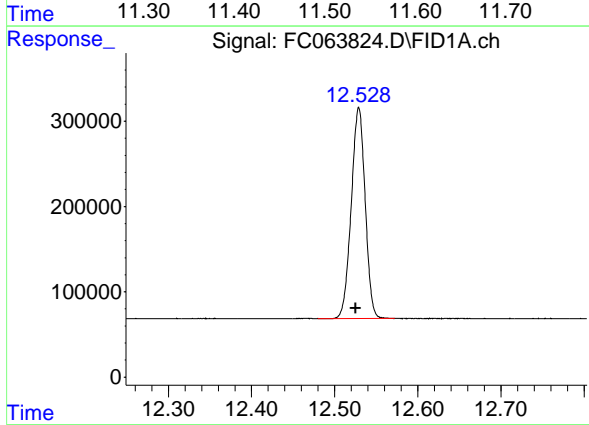
R.T.: 11.222 min
 Delta R.T.: 0.002 min
 Response: 3060808
 Conc: 19.34 ug/ml



#9 ortho-Terphenyl (SURR)

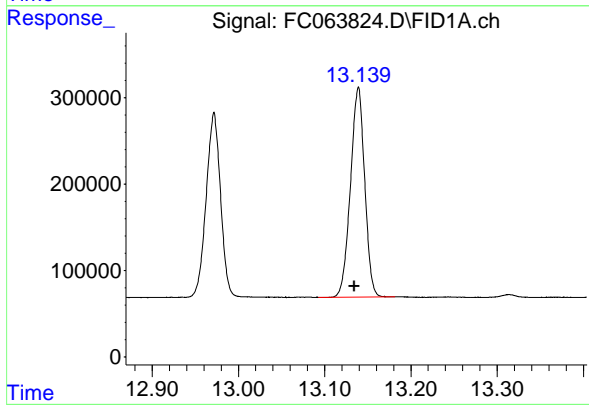
R.T.: 11.537 min
 Delta R.T.: 0.004 min
 Response: 3427425
 Conc: 18.78 ug/ml

Instrument : FID_C
 ClientSampleId : 20 PPM ALIPHATIC HC STD



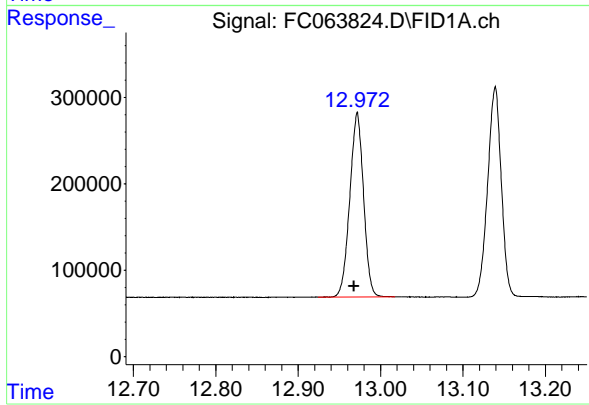
#10 n-Eicosane (C20)

R.T.: 12.529 min
 Delta R.T.: 0.004 min
 Response: 2876818
 Conc: 19.45 ug/ml



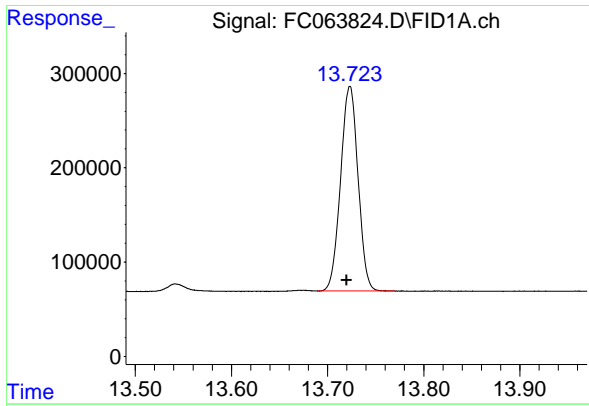
#11 n-Heneicosane (C21)

R.T.: 13.139 min
 Delta R.T.: 0.005 min
 Response: 2782139
 Conc: 19.33 ug/ml



#12 1-chlorooctadecane (SURR)

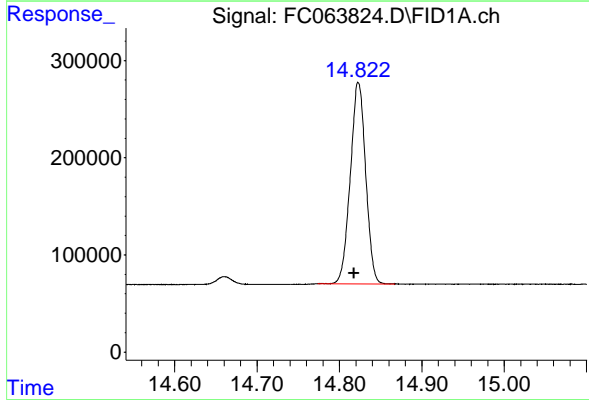
R.T.: 12.972 min
 Delta R.T.: 0.004 min
 Response: 2466308
 Conc: 19.30 ug/ml



#13 n-Docosane (C22)

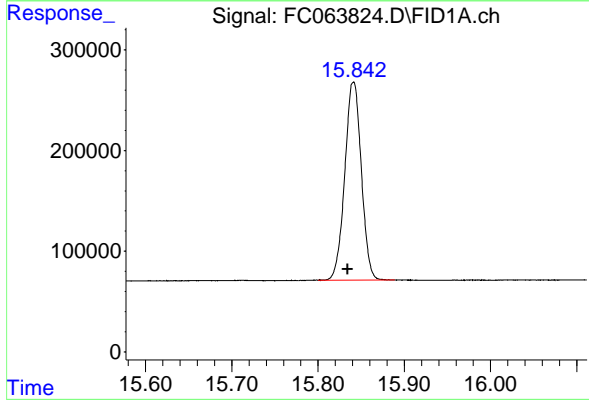
R.T.: 13.723 min
Delta R.T.: 0.004 min
Response: 2746423
Conc: 19.50 ug/ml

Instrument :
FID_C
ClientSampleId :
20 PPM ALIPHATIC HC STD



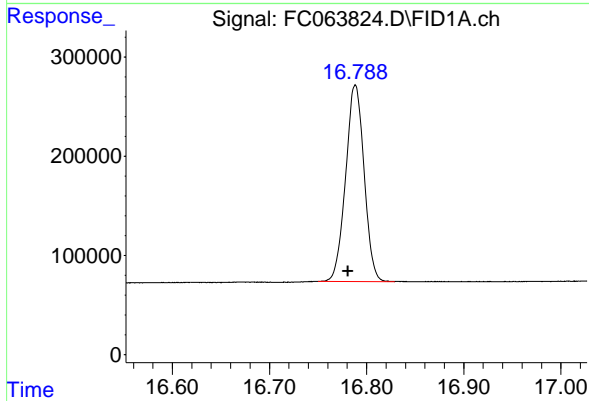
#14 n-Tetracosane (C24)

R.T.: 14.823 min
Delta R.T.: 0.005 min
Response: 2685754
Conc: 19.57 ug/ml



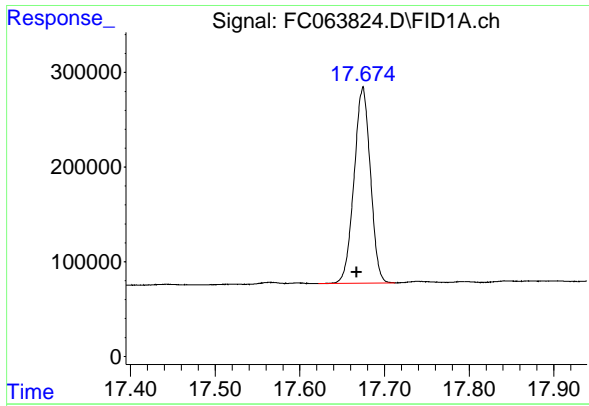
#15 n-Hexacosane (C26)

R.T.: 15.841 min
Delta R.T.: 0.007 min
Response: 2624081
Conc: 19.79 ug/ml



#16 n-Octacosane (C28)

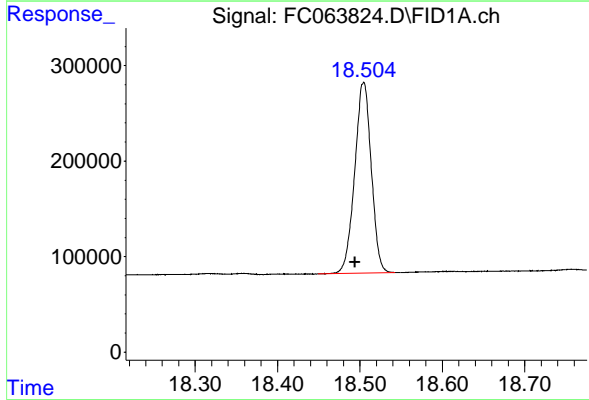
R.T.: 16.788 min
Delta R.T.: 0.008 min
Response: 2605136
Conc: 20.52 ug/ml



#17 n-Tricontane (C30)

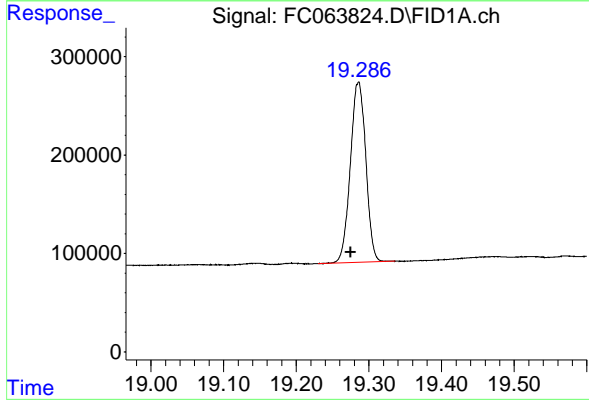
R.T.: 17.675 min
 Delta R.T.: 0.007 min
 Response: 2772731
 Conc: 21.70 ug/ml

Instrument : FID_C
 ClientSampleId : 20 PPM ALIPHATIC HC STD



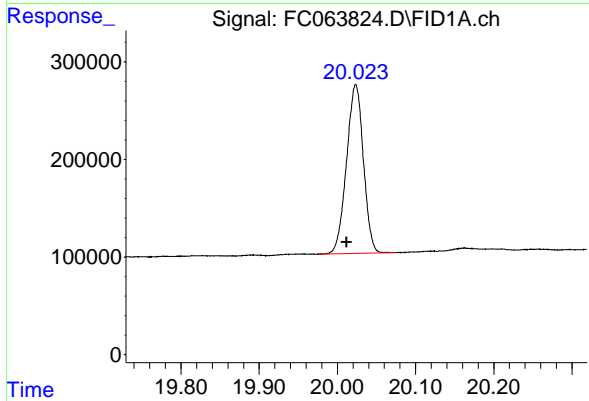
#18 n-Dotriacontane (C32)

R.T.: 18.504 min
 Delta R.T.: 0.010 min
 Response: 2793304
 Conc: 22.45 ug/ml



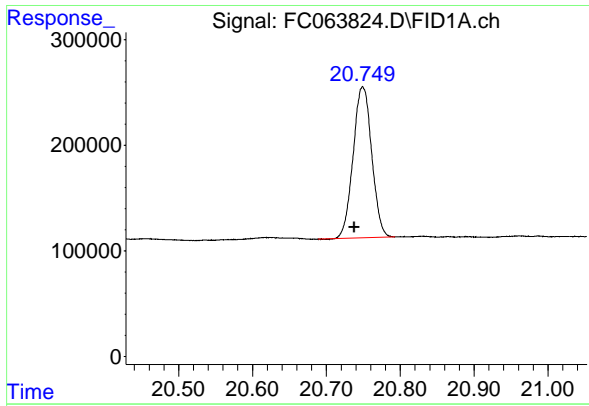
#19 n-Tetraatriacontane (C34)

R.T.: 19.286 min
 Delta R.T.: 0.010 min
 Response: 2710626
 Conc: 21.98 ug/ml



#20 n-Hexatriacontane (C36)

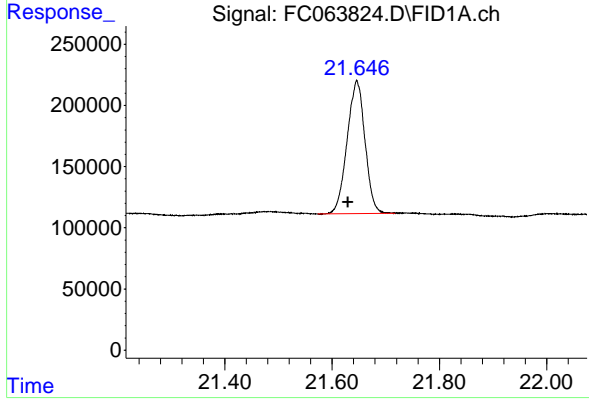
R.T.: 20.023 min
 Delta R.T.: 0.012 min
 Response: 2591166
 Conc: 21.59 ug/ml



#21 n-Octatriacontane (C38)

R.T.: 20.749 min
Delta R.T.: 0.012 min
Response: 2503582
Conc: 20.74 ug/ml

Instrument : FID_C
ClientSampleId : 20 PPM ALIPHATIC HC STD



#22 n-Tetracontane (C40)

R.T.: 21.646 min
Delta R.T.: 0.017 min
Response: 2505356
Conc: 20.68 ug/ml