

Data Path : Z:\pestpcbsrv\HPCHEM1\FID_C\Data\FC061319AL\
 Data File : FC041746.D
 Signal(s) : FID1A.CH
 Acq On : 13 Jun 2019 12:12
 Operator : DD\AJ
 Sample : K3159-03
 Misc :
 ALS Vial : 6 Sample Multiplier: 1

Integration File: autoint1.e
 Quant Time: Jun 14 00:52:02 2019
 Quant Method : Z:\pestpcbsrv\HPCHEM1\FID_C\Method\Alaphatic EPH 061219.M
 Quant Title : GC Extractables
 QLast Update : Thu Jun 13 07:03:58 2019
 Response via : Initial Calibration
 Integrator: ChemStation 6890 Scale Mode: Large solvent peaks clipped

Volume Inj. : 1 ul
 Signal Phase : Rxi-1ms
 Signal Info : 20M x 0.18mm x 0.18um

Compound	R.T.	Response	Conc Units
System Monitoring Compounds			
9) S ortho-Terphenyl (SURR)	11.706	4691167	35.261 ug/ml
Spiked Amount	50.000	Recovery =	70.52%
12) S 1-chlorooctadecane (S...	13.132	3650733	33.224 ug/ml
Spiked Amount	50.000	Recovery =	66.45%

Target Compounds

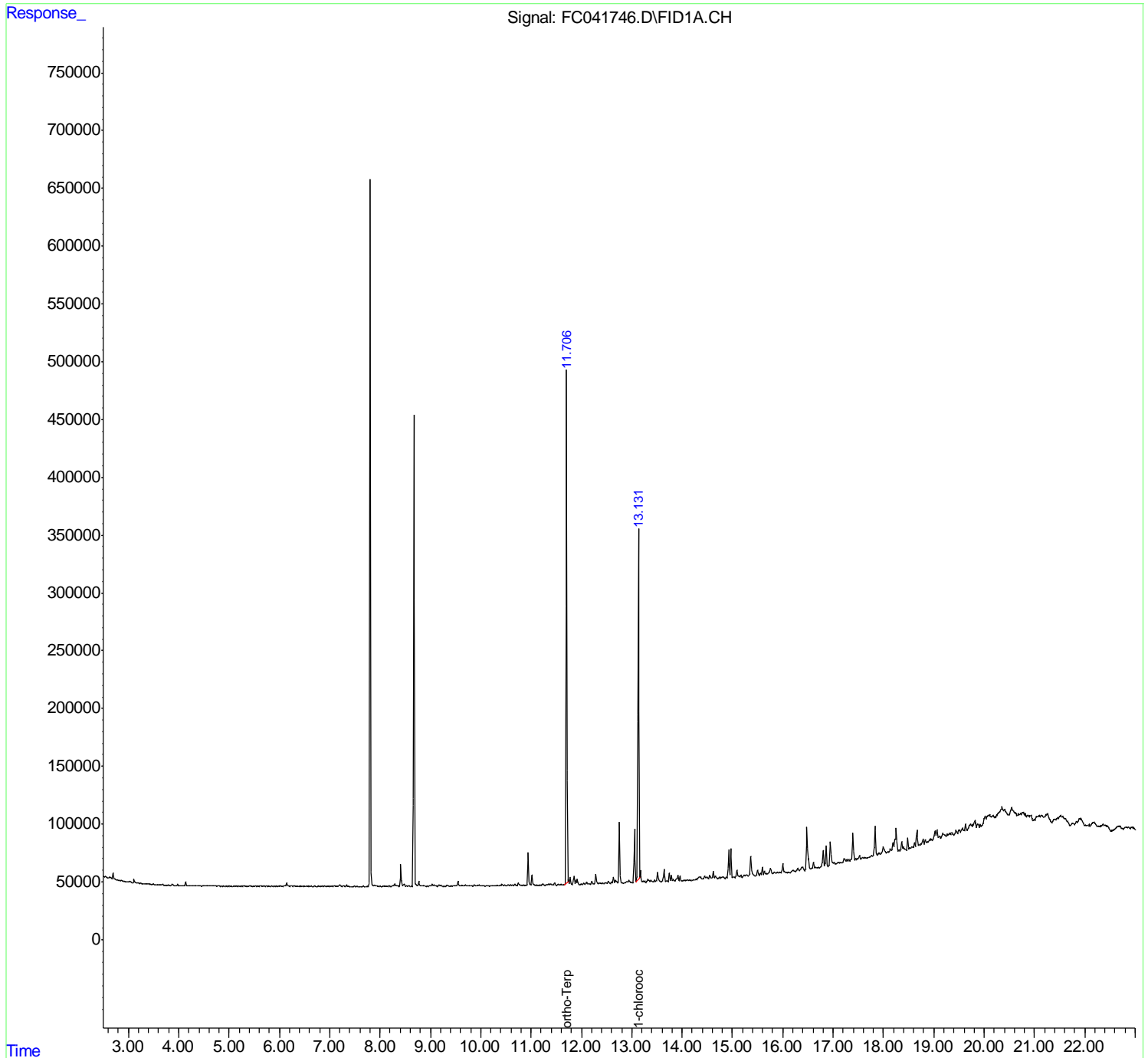
(f)=RT Delta > 1/2 Window

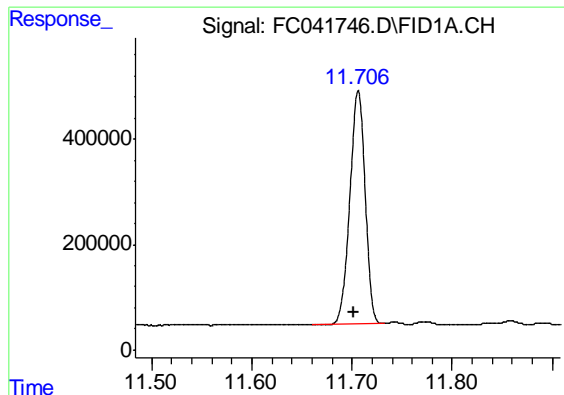
(m)=manual int.

Data Path : Z:\pestpcbsrv\HPCHEM1\FID_C\Data\FC061319AL\
 Data File : FC041746.D
 Signal(s) : FID1A.CH
 Acq On : 13 Jun 2019 12:12
 Operator : DD\AJ
 Sample : K3159-03
 Misc :
 ALS Vial : 6 Sample Multiplier: 1

Integration File: autoint1.e
 Quant Time: Jun 14 00:52:02 2019
 Quant Method : Z:\pestpcbsrv\HPCHEM1\FID_C\Method\Alaphatic EPH 061219.M
 Quant Title : GC Extractables
 QLast Update : Thu Jun 13 07:03:58 2019
 Response via : Initial Calibration
 Integrator: ChemStation 6890 Scale Mode: Large solvent peaks clipped

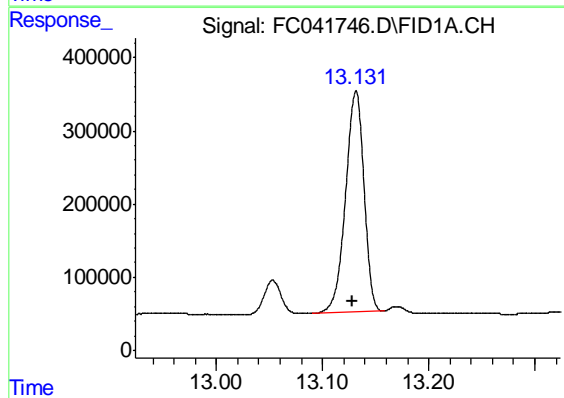
Volume Inj. : 1 ul
 Signal Phase : Rxi-1ms
 Signal Info : 20M x 0.18mm x 0.18um





#9 ortho-Terphenyl (SURR)

R.T.: 11.706 min
Delta R.T.: 0.004 min
Response: 4691167
Conc: 35.26 ug/ml



#12 1-chlorooctadecane (SURR)

R.T.: 13.132 min
Delta R.T.: 0.003 min
Response: 3650733
Conc: 33.22 ug/ml