

Data Path : Z:\pestpcbsrv\HPCHEM1\FID\_C\Data\FC061422AL\  
 Data File : FC060245.D  
 Signal(s) : FID1A.CH  
 Acq On : 15 Jun 2022 1:24  
 Operator : UA/NP  
 Sample : N3327-06  
 Misc :  
 ALS Vial : 20 Sample Multiplier: 1

Instrument :  
 FID\_C  
 ClientSampleId :  
 EW-WMR-EPH-6

Integration File: autoint1.e  
 Quant Time: Jun 15 05:36:46 2022  
 Quant Method : Z:\pestpcbsrv\HPCHEM1\FID\_C\Method\Aliphatic EPH 052722.M  
 Quant Title : GC Extractables  
 QLast Update : Sat May 28 08:22:04 2022  
 Response via : Initial Calibration  
 Integrator: ChemStation 6890 Scale Mode: Large solvent peaks clipped

Volume Inj. : 1 ul  
 Signal Phase : Rxi-1ms  
 Signal Info : 20M x 0.18mm x 0.18um

Compound	R.T.	Response	Conc Units
-----			
System Monitoring Compounds			
9) S ortho-Terphenyl (SURR)	10.653	6197157	39.822 ug/ml
Spiked Amount	50.000	Recovery	= 79.64%
12) S 1-chlorooctadecane (S...	12.023	5075852	40.938 ug/ml
Spiked Amount	50.000	Recovery	= 81.88%

Target Compounds

(f)=RT Delta > 1/2 Window

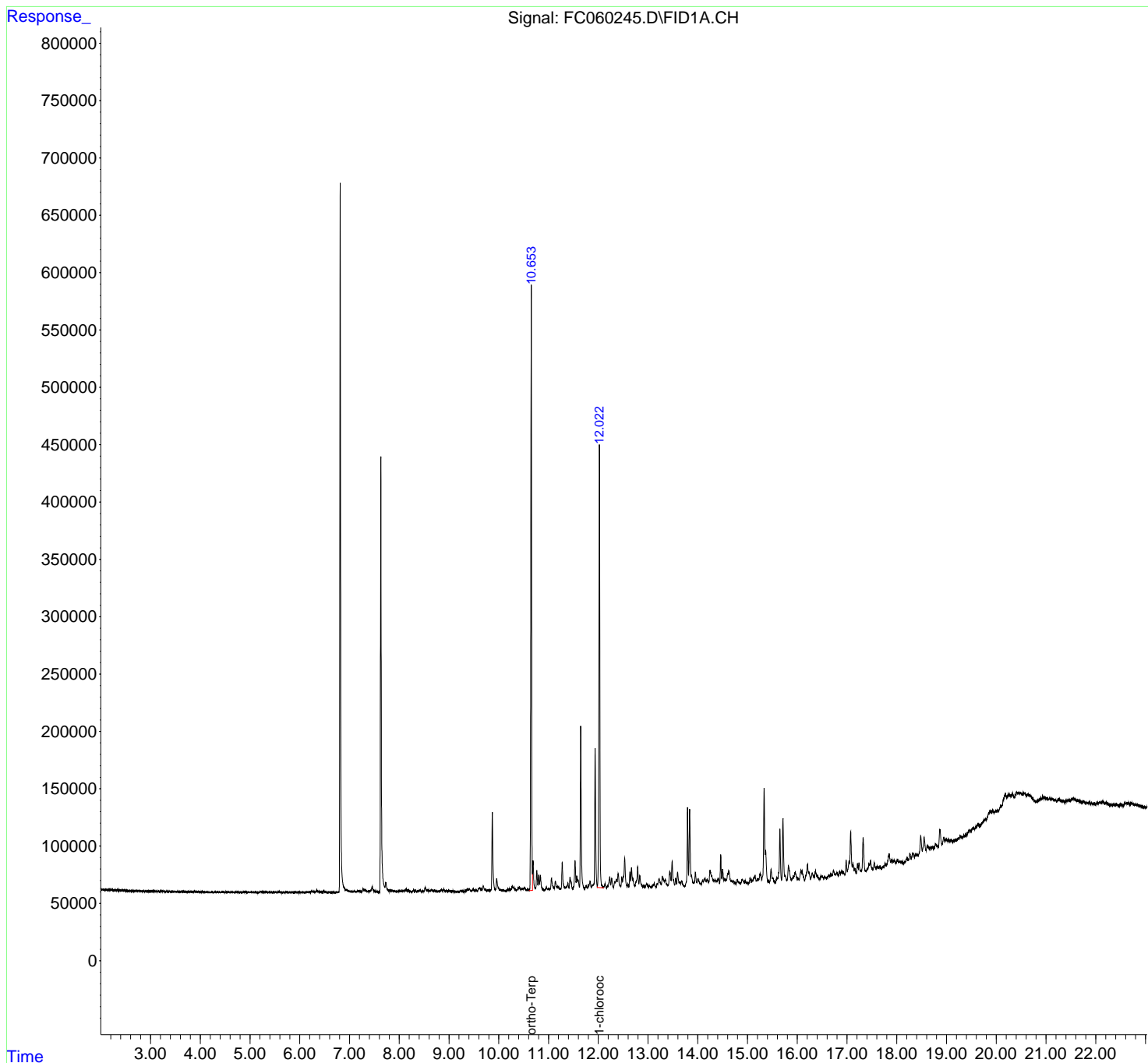
(m)=manual int.

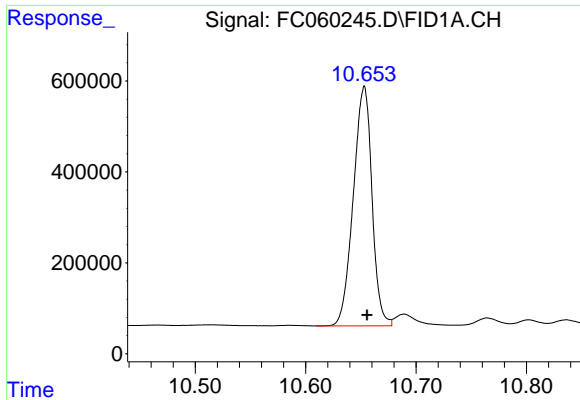
Data Path : Z:\pestpcbsrv\HPCHEM1\FID\_C\Data\FC061422AL\  
 Data File : FC060245.D  
 Signal(s) : FID1A.CH  
 Acq On : 15 Jun 2022 1:24  
 Operator : UA/NP  
 Sample : N3327-06  
 Misc :  
 ALS Vial : 20 Sample Multiplier: 1

Instrument :  
 FID\_C  
 ClientSampleId :  
 EW-WMR-EPH-6

Integration File: autoint1.e  
 Quant Time: Jun 15 05:36:46 2022  
 Quant Method : Z:\pestpcbsrv\HPCHEM1\FID\_C\Method\Aliphatic EPH 052722.M  
 Quant Title : GC Extractables  
 QLast Update : Sat May 28 08:22:04 2022  
 Response via : Initial Calibration  
 Integrator: ChemStation 6890 Scale Mode: Large solvent peaks clipped

Volume Inj. : 1 ul  
 Signal Phase : Rxi-1ms  
 Signal Info : 20M x 0.18mm x 0.18um

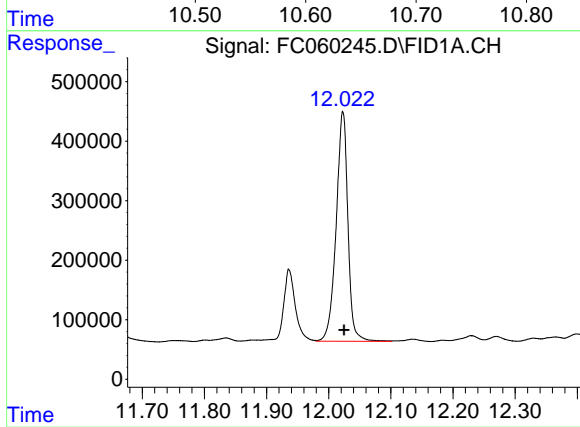




#9 ortho-Terphenyl (SURR)

R.T.: 10.653 min  
Delta R.T.: -0.003 min  
Response: 6197157  
Conc: 39.82 ug/ml

Instrument :  
FID\_C  
ClientSampleId :  
EW-WMR-EPH-6



#12 1-chlorooctadecane (SURR)

R.T.: 12.023 min  
Delta R.T.: -0.002 min  
Response: 5075852  
Conc: 40.94 ug/ml