

Data Path : Z:\pestpcbsrv\HPCHEM1\FID_C\Data\FC061522AL\
 Data File : FC060268.D
 Signal(s) : FID1A.CH
 Acq On : 15 Jun 2022 19:34
 Operator : UA/NP
 Sample : N3333-01DL 25X
 Misc :
 ALS Vial : 7 Sample Multiplier: 1

Instrument :
 FID_C
ClientSampleId :
 D-15-TP-15(7.5-8.0)DL

Manual Integrations
APPROVED

Reviewed By :Yogesh Patel 06/16/2022
 Supervised By :Ankita Jodhani 06/16/2022

Integration File: autoint1.e
 Quant Time: Jun 16 02:11:56 2022
 Quant Method : Z:\pestpcbsrv\HPCHEM1\FID_C\Method\Aliphatic EPH 052722.M
 Quant Title : GC Extractables
 QLast Update : Sat May 28 08:22:04 2022
 Response via : Initial Calibration
 Integrator: ChemStation 6890 Scale Mode: Large solvent peaks clipped

Volume Inj. : 1 ul
 Signal Phase : Rxi-1ms
 Signal Info : 20M x 0.18mm x 0.18um

Compound	R.T.	Response	Conc Units
System Monitoring Compounds			
9) S ortho-Terphenyl (SURR)	10.647	356256	2.289 ug/mlm
Spiked Amount	50.000	Recovery =	4.58%
12) S 1-chlorooctadecane (S...	12.019	262938	2.121 ug/ml
Spiked Amount	50.000	Recovery =	4.24%

Target Compounds

(f)=RT Delta > 1/2 Window

(m)=manual int.

Data Path : Z:\pestpcbsrv\HPCHEM1\FID_C\Data\FC061522AL\
 Data File : FC060268.D
 Signal(s) : FID1A.CH
 Acq On : 15 Jun 2022 19:34
 Operator : UA/NP
 Sample : N3333-01DL 25X
 Misc :
 ALS Vial : 7 Sample Multiplier: 1

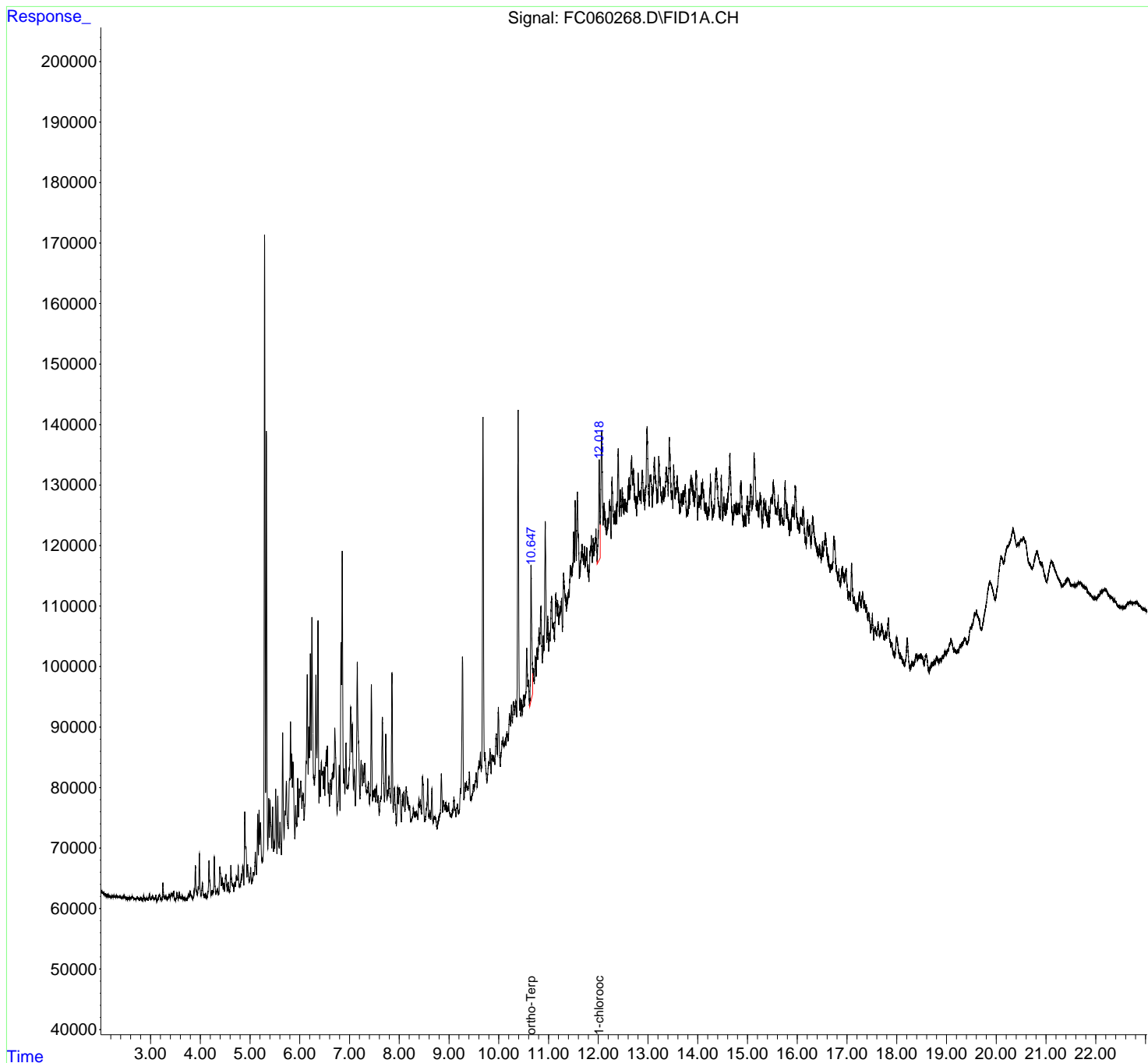
Instrument :
 FID_C
ClientSampleId :
 D-15-TP-15(7.5-8.0)DL

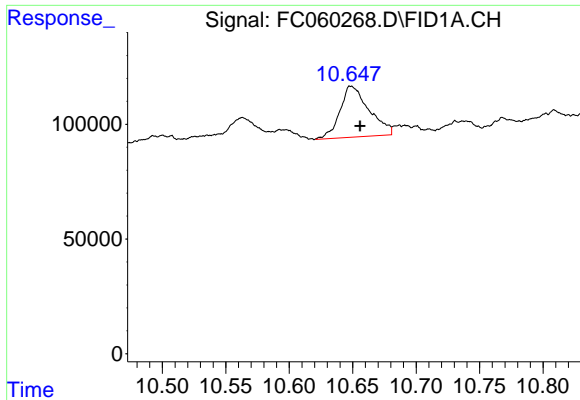
Manual Integrations
APPROVED

Reviewed By :Yogesh Patel 06/16/2022
 Supervised By :Ankita Jodhani 06/16/2022

Integration File: autoint1.e
 Quant Time: Jun 16 02:11:56 2022
 Quant Method : Z:\pestpcbsrv\HPCHEM1\FID_C\Method\Aliphatic EPH 052722.M
 Quant Title : GC Extractables
 QLast Update : Sat May 28 08:22:04 2022
 Response via : Initial Calibration
 Integrator: ChemStation 6890 Scale Mode: Large solvent peaks clipped

Volume Inj. : 1 ul
 Signal Phase : Rxi-1ms
 Signal Info : 20M x 0.18mm x 0.18um





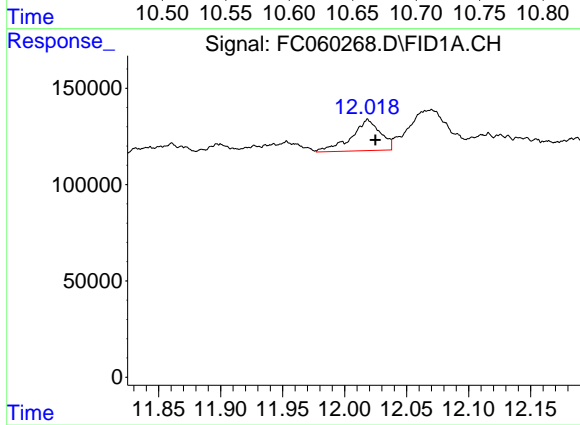
#9 ortho-Terphenyl (SURR)

R.T.: 10.647 min
 Delta R.T.: -0.009 min
 Response: 356256
 Conc: 2.29 ug/ml

Instrument : FID_C
 ClientSampleId : D-15-TP-15(7.5-8.0)DL

Manual Integrations
 APPROVED

Reviewed By :Yogesh Patel 06/16/2022
 Supervised By :Ankita Jodhani 06/16/2022



#12 1-chlorooctadecane (SURR)

R.T.: 12.019 min
 Delta R.T.: -0.006 min
 Response: 262938
 Conc: 2.12 ug/ml