

Data Path : Z:\pestpcbsrv\HPCHEM1\FID\_C\Data\FC061522AL\  
 Data File : FC060281.D  
 Signal(s) : FID1A.CH  
 Acq On : 16 Jun 2022 4:22  
 Operator : UA/NP  
 Sample : N3329-08  
 Misc :  
 ALS Vial : 20 Sample Multiplier: 1

**Instrument :**  
 FID\_C  
**ClientSampleId :**  
 PALMYRA-RT-73-EPH-2

Integration File: autoint1.e  
 Quant Time: Jun 16 06:03:49 2022  
 Quant Method : Z:\pestpcbsrv\HPCHEM1\FID\_C\Method\Aliphatic EPH 052722.M  
 Quant Title : GC Extractables  
 QLast Update : Sat May 28 08:22:04 2022  
 Response via : Initial Calibration  
 Integrator: ChemStation 6890 Scale Mode: Large solvent peaks clipped

Volume Inj. : 1 ul  
 Signal Phase : Rxi-1ms  
 Signal Info : 20M x 0.18mm x 0.18um

Compound	R.T.	Response	Conc Units
-----			
System Monitoring Compounds			
9) S ortho-Terphenyl (SURR)	10.648	3282613	21.093 ug/ml
Spiked Amount	50.000	Recovery	= 42.19%
12) S 1-chlorooctadecane (S...	12.018	2653725	21.403 ug/ml
Spiked Amount	50.000	Recovery	= 42.81%

Target Compounds

(f)=RT Delta > 1/2 Window

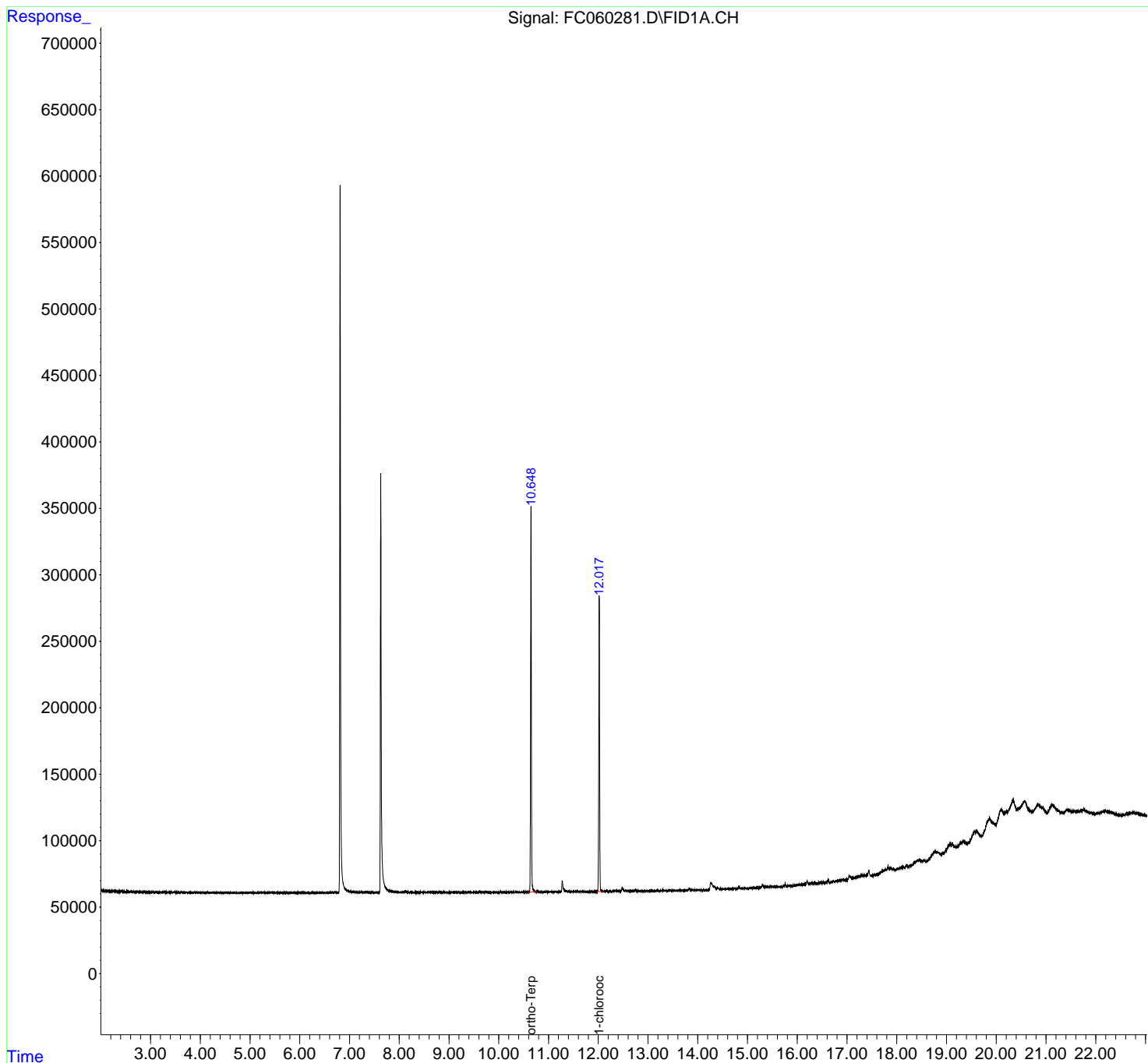
(m)=manual int.

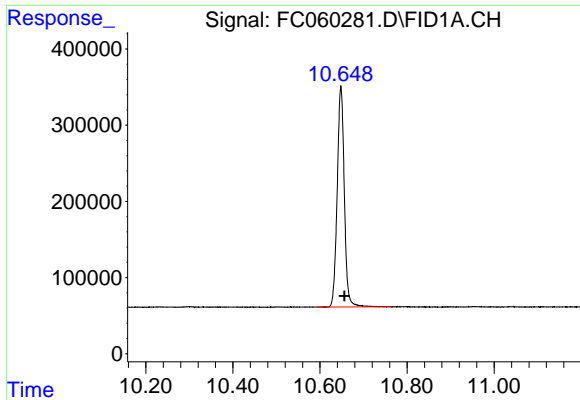
Data Path : Z:\pestpcbsrv\HPCHEM1\FID\_C\Data\FC061522AL\  
 Data File : FC060281.D  
 Signal(s) : FID1A.CH  
 Acq On : 16 Jun 2022 4:22  
 Operator : UA/NP  
 Sample : N3329-08  
 Misc :  
 ALS Vial : 20 Sample Multiplier: 1

Instrument :  
 FID\_C  
 ClientSampleId :  
 PALMYRA-RT-73-EPH-2

Integration File: autoint1.e  
 Quant Time: Jun 16 06:03:49 2022  
 Quant Method : Z:\pestpcbsrv\HPCHEM1\FID\_C\Method\Aliphatic EPH 052722.M  
 Quant Title : GC Extractables  
 QLast Update : Sat May 28 08:22:04 2022  
 Response via : Initial Calibration  
 Integrator: ChemStation 6890 Scale Mode: Large solvent peaks clipped

Volume Inj. : 1 ul  
 Signal Phase : Rxi-1ms  
 Signal Info : 20M x 0.18mm x 0.18um

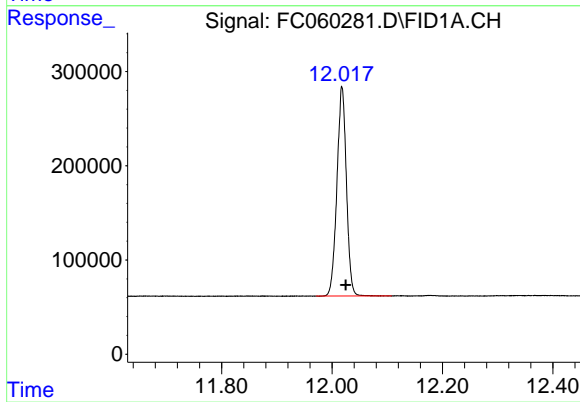




#9 ortho-Terphenyl (SURR)

R.T.: 10.648 min  
Delta R.T.: -0.008 min  
Response: 3282613  
Conc: 21.09 ug/ml

Instrument :  
FID\_C  
ClientSampleId :  
PALMYRA-RT-73-EPH-2



#12 1-chlorooctadecane (SURR)

R.T.: 12.018 min  
Delta R.T.: -0.007 min  
Response: 2653725  
Conc: 21.40 ug/ml