

Data Path : Z:\pestpcbsrv\HPCHEM1\FID_C\Data\FC061621AL\
 Data File : FC054278.D
 Signal(s) : FID1A.CH
 Acq On : 16 Jun 2021 22:06
 Operator : DD\AJ
 Sample : M2672-10
 Misc :
 ALS Vial : 16 Sample Multiplier: 1

Instrument :
 FID_C
ClientSampleId :
 17-B6(44-48)

Manual Integrations
APPROVED
 Ankita
 6/17/2021 3:18:11 PM

Integration File: autoint1.e
 Quant Time: Jun 17 01:20:04 2021
 Quant Method : Z:\pestpcbsrv\HPCHEM1\FID_C\Method\Alaphatic EPH 061021.M
 Quant Title : GC Extractables
 QLast Update : Fri Jun 11 04:43:57 2021
 Response via : Initial Calibration
 Integrator: ChemStation 6890 Scale Mode: Large solvent peaks clipped

Volume Inj. : 1 ul
 Signal Phase : Rxi-1ms
 Signal Info : 20M x 0.18mm x 0.18um

Compound	R.T.	Response	Conc Units

System Monitoring Compounds			
9) S ortho-Terphenyl (SURR)	11.352	6738734	44.374 ug/mlm
Spiked Amount	50.000	Recovery	= 88.75%
12) S 1-chlorooctadecane (S...	12.795	5070957	43.048 ug/ml
Spiked Amount	50.000	Recovery	= 86.10%

Target Compounds

(f)=RT Delta > 1/2 Window

(m)=manual int.

Data Path : Z:\pestpcbsrv\HPCHEM1\FID_C\Data\FC061621AL\
 Data File : FC054278.D
 Signal(s) : FID1A.CH
 Acq On : 16 Jun 2021 22:06
 Operator : DD\AJ
 Sample : M2672-10
 Misc :
 ALS Vial : 16 Sample Multiplier: 1

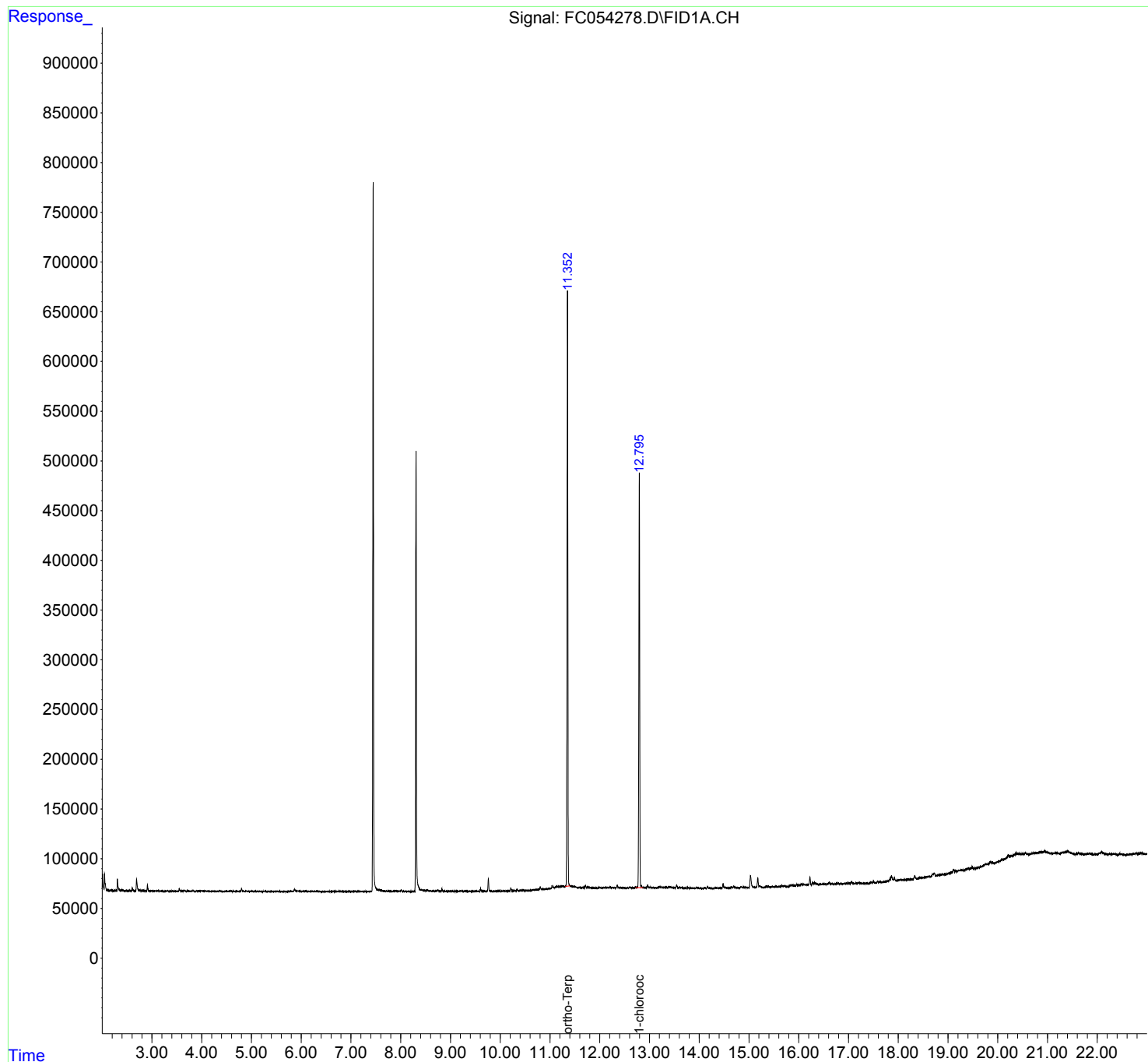
Instrument :
 FID_C
 ClientSampled :
 17-B6(44-48)

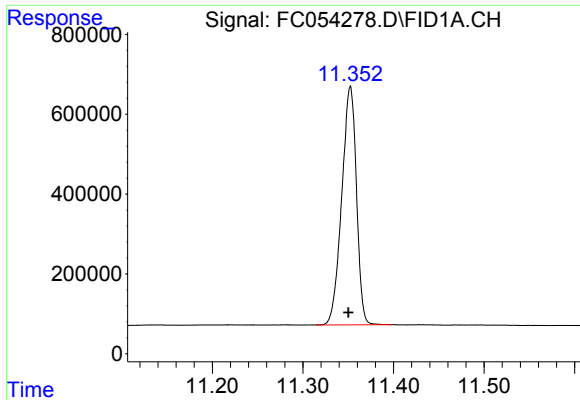
Manual Integrations
 APPROVED

Ankita
 6/17/2021 3:18:11 PM

Integration File: autoint1.e
 Quant Time: Jun 17 01:20:04 2021
 Quant Method : Z:\pestpcbsrv\HPCHEM1\FID_C\Method\Alaphatic EPH 061021.M
 Quant Title : GC Extractables
 QLast Update : Fri Jun 11 04:43:57 2021
 Response via : Initial Calibration
 Integrator: ChemStation 6890 Scale Mode: Large solvent peaks clipped

Volume Inj. : 1 ul
 Signal Phase : Rxi-1ms
 Signal Info : 20M x 0.18mm x 0.18um





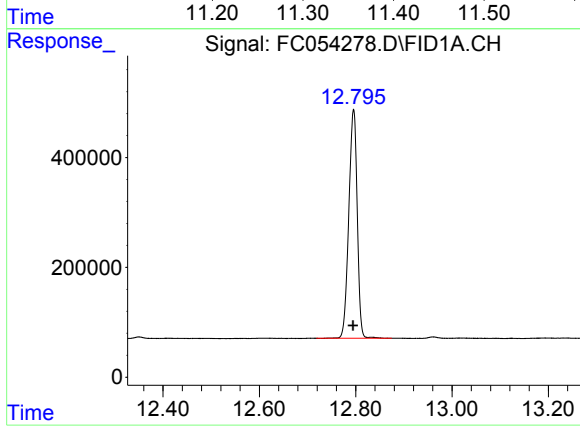
#9 ortho-Terphenyl (SURR)

R.T.: 11.352 min
Delta R.T.: 0.002 min
Response: 6738734
Conc: 44.37 ug/ml m

Instrument :
FID_C
ClientSampled :
17-B6(44-48)

Manual Integrations
APPROVED

Ankita
6/17/2021 3:18:11 PM



#12 1-chlorooctadecane (SURR)

R.T.: 12.795 min
Delta R.T.: 0.000 min
Response: 5070957
Conc: 43.05 ug/ml