

Data Path : Z:\pestpcbsrv\HPCHEM1\FID\_C\Data\FC061820AL\  
 Data File : FC047943.D  
 Signal(s) : FID1A.CH  
 Acq On : 19 Jun 2020 7:57  
 Operator : DD\AJ  
 Sample : L2817-09  
 Misc :  
 ALS Vial : 30 Sample Multiplier: 1

Instrument :  
 FID\_C  
 ClientSampleId :  
 SU-04-061720-2

Integration File: autoint1.e  
 Quant Time: Jun 19 10:46:43 2020  
 Quant Method : Z:\pestpcbsrv\HPCHEM1\FID\_C\Method\Alaphatic EPH 060920.M  
 Quant Title : GC Extractables  
 QLast Update : Wed Jun 10 08:39:57 2020  
 Response via : Initial Calibration  
 Integrator: ChemStation 6890 Scale Mode: Large solvent peaks clipped

Volume Inj. : 1 ul  
 Signal Phase : Rxi-1ms  
 Signal Info : 20M x 0.18mm x 0.18um

Compound	R.T.	Response	Conc Units
-----			
System Monitoring Compounds			
9) S ortho-Terphenyl (SURR)	11.724	3410743	28.433 ug/ml
Spiked Amount	50.000	Recovery	= 56.87%
12) S 1-chlorooctadecane (S...	13.137	3189884	32.571 ug/ml
Spiked Amount	50.000	Recovery	= 65.14%

Target Compounds

-----

(f)=RT Delta > 1/2 Window

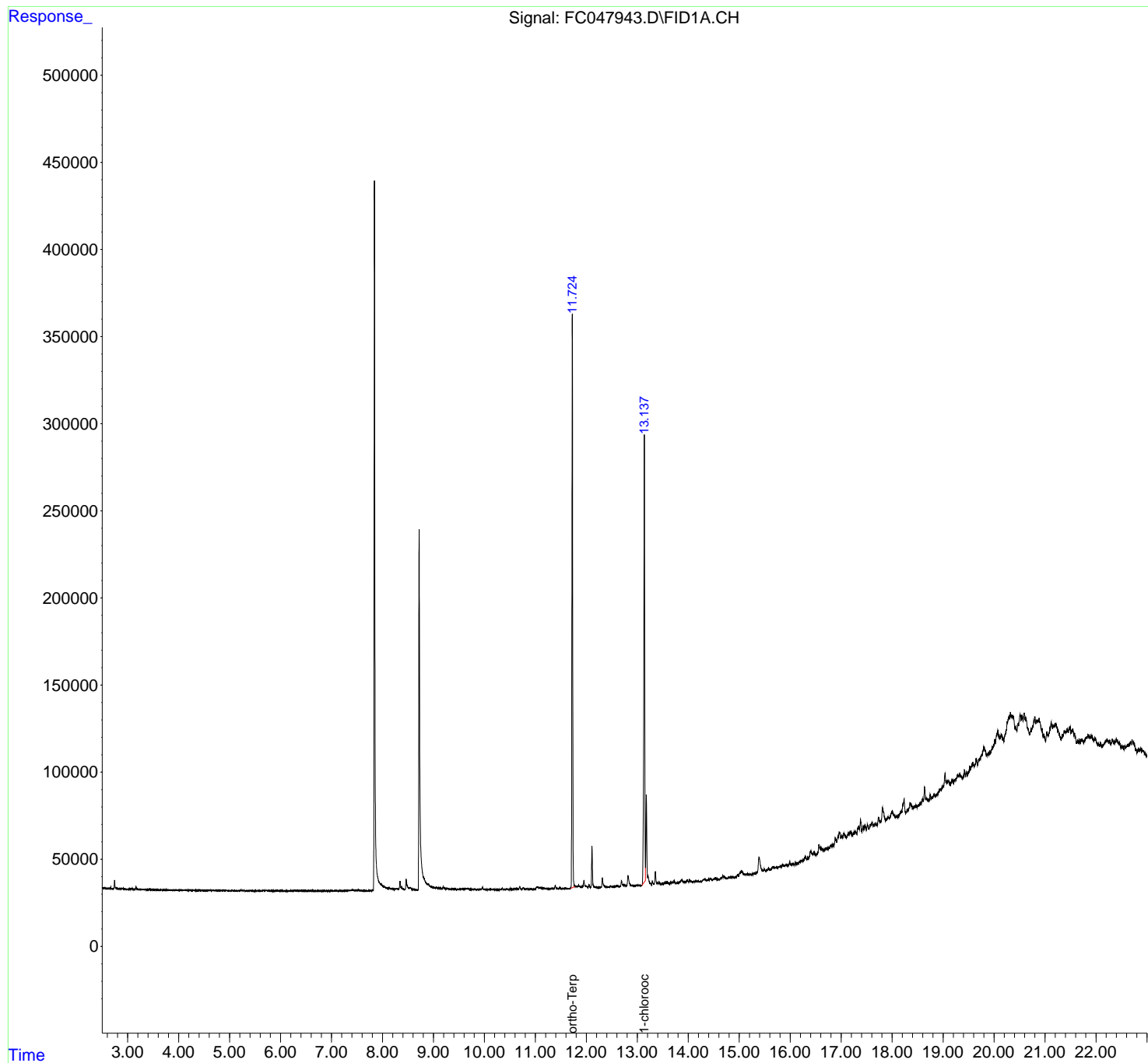
(m)=manual int.

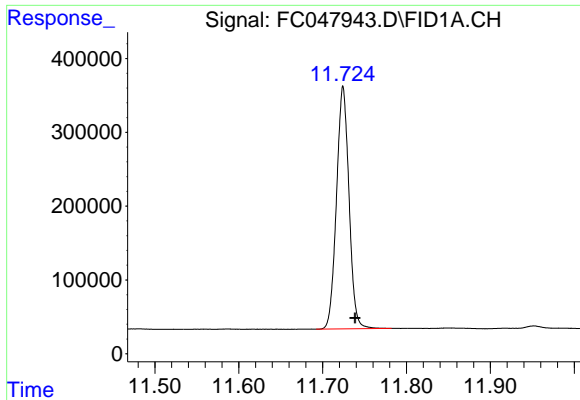
Data Path : Z:\pestpcbsrv\HPCHEM1\FID\_C\Data\FC061820AL\  
 Data File : FC047943.D  
 Signal(s) : FID1A.CH  
 Acq On : 19 Jun 2020 7:57  
 Operator : DD\AJ  
 Sample : L2817-09  
 Misc :  
 ALS Vial : 30 Sample Multiplier: 1

Instrument :  
 FID\_C  
 ClientSampleId :  
 SU-04-061720-2

Integration File: autoint1.e  
 Quant Time: Jun 19 10:46:43 2020  
 Quant Method : Z:\pestpcbsrv\HPCHEM1\FID\_C\Method\Alaphatic EPH 060920.M  
 Quant Title : GC Extractables  
 QLast Update : Wed Jun 10 08:39:57 2020  
 Response via : Initial Calibration  
 Integrator: ChemStation 6890 Scale Mode: Large solvent peaks clipped

Volume Inj. : 1 ul  
 Signal Phase : Rxi-1ms  
 Signal Info : 20M x 0.18mm x 0.18um

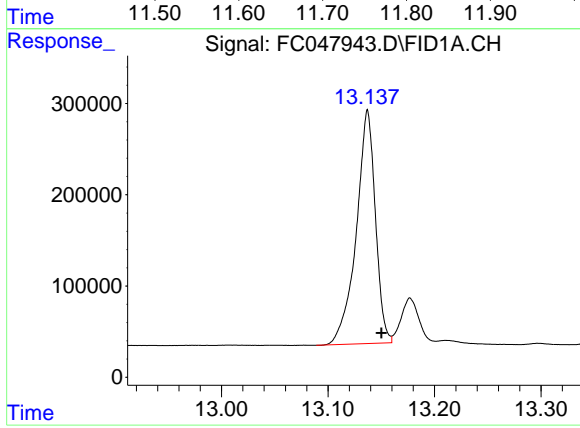




#9 ortho-Terphenyl (SURR)

R.T.: 11.724 min  
Delta R.T.: -0.014 min  
Response: 3410743  
Conc: 28.43 ug/ml

Instrument :  
FID\_C  
ClientSampleId :  
SU-04-061720-2



#12 1-chlorooctadecane (SURR)

R.T.: 13.137 min  
Delta R.T.: -0.013 min  
Response: 3189884  
Conc: 32.57 ug/ml