

Data Path : Z:\pestpcbsrv\HPCHEM1\FID\_C\Data\FC061822AL\  
 Data File : FC060337.D  
 Signal(s) : FID1A.CH  
 Acq On : 19 Jun 2022 2:10  
 Operator : UA/NP  
 Sample : N3213-02  
 Misc :  
 ALS Vial : 17 Sample Multiplier: 1

**Instrument :**  
 FID\_C  
**ClientSampleId :**  
 SW-W-A1

**Manual Integrations**  
**APPROVED**  
 Reviewed By :Yogesh Patel 06/20/2022  
 Supervised By :Ankita Jodhani 06/20/2022

Integration File: autoint1.e  
 Quant Time: Jun 20 01:01:58 2022  
 Quant Method : Z:\pestpcbsrv\HPCHEM1\FID\_C\Method\Aliphatic EPH 052722.M  
 Quant Title : GC Extractables  
 QLast Update : Sat May 28 08:22:04 2022  
 Response via : Initial Calibration  
 Integrator: ChemStation 6890 Scale Mode: Large solvent peaks clipped

Volume Inj. : 1 ul  
 Signal Phase : Rxi-1ms  
 Signal Info : 20M x 0.18mm x 0.18um

Compound	R.T.	Response	Conc Units
-----			
System Monitoring Compounds			
12) S 1-chlorooctadecane (S...	12.068	3557441	28.692 ug/mlm
Spiked Amount	50.000	Recovery	= 57.38%

Target Compounds

(f)=RT Delta > 1/2 Window (m)=manual int.

Data Path : Z:\pestpcbsrv\HPCHEM1\FID\_C\Data\FC061822AL\  
 Data File : FC060337.D  
 Signal(s) : FID1A.CH  
 Acq On : 19 Jun 2022 2:10  
 Operator : UA/NP  
 Sample : N3213-02  
 Misc :  
 ALS Vial : 17 Sample Multiplier: 1

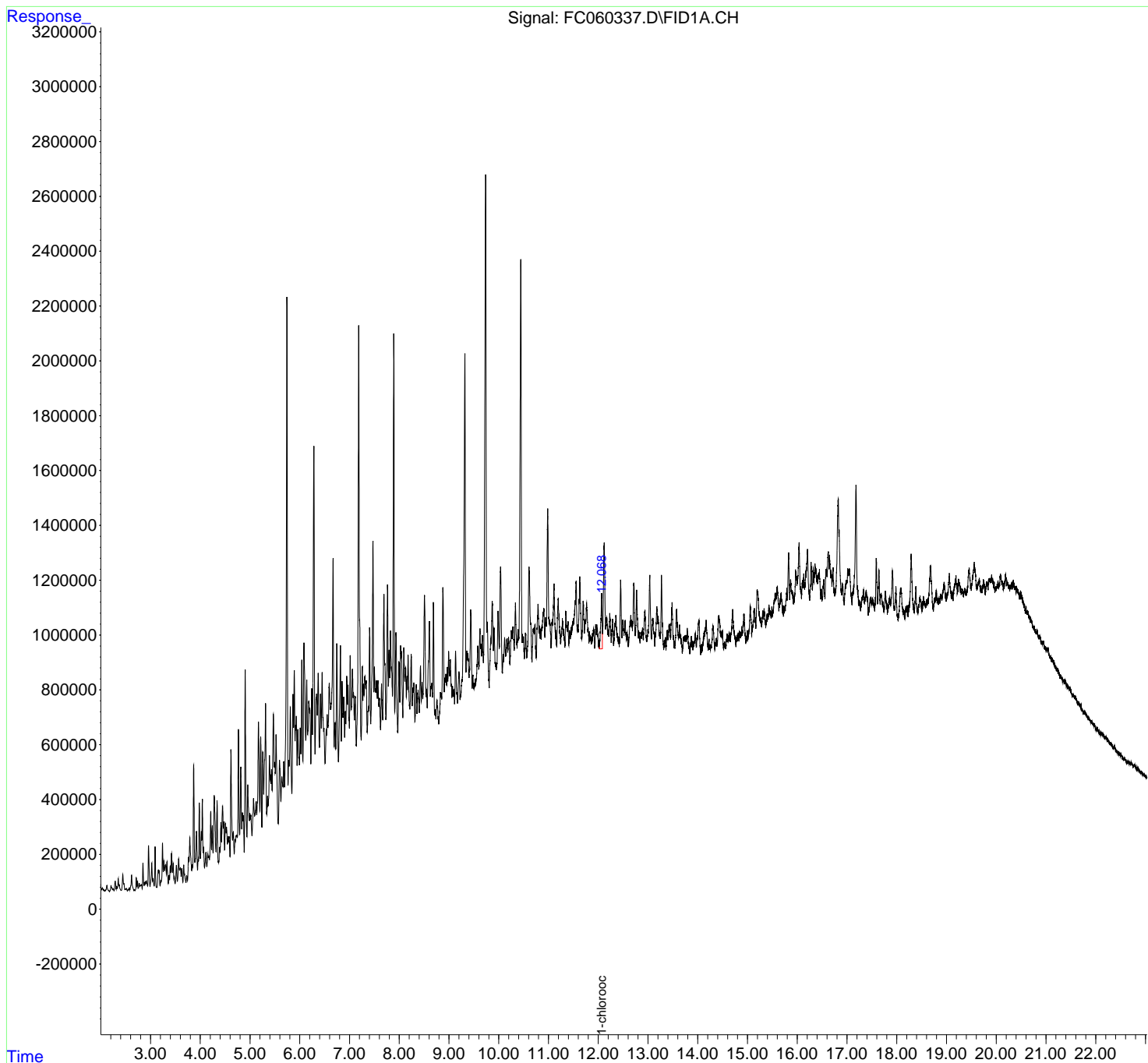
Instrument :  
 FID\_C  
 ClientSampleId :  
 SW-W-A1

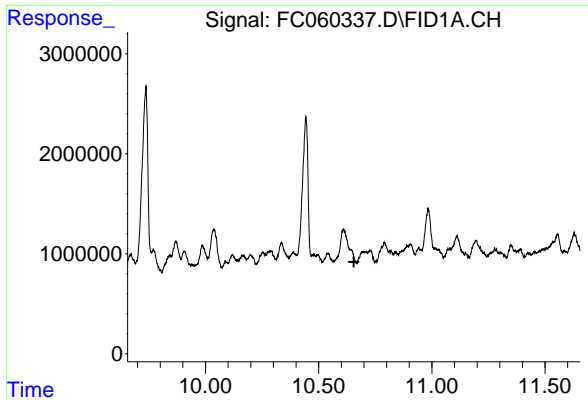
Manual Integrations  
**APPROVED**

Reviewed By :Yogesh Patel 06/20/2022  
 Supervised By :Ankita Jodhani 06/20/2022

Integration File: autoint1.e  
 Quant Time: Jun 20 01:01:58 2022  
 Quant Method : Z:\pestpcbsrv\HPCHEM1\FID\_C\Method\Aliphatic EPH 052722.M  
 Quant Title : GC Extractables  
 QLast Update : Sat May 28 08:22:04 2022  
 Response via : Initial Calibration  
 Integrator: ChemStation 6890 Scale Mode: Large solvent peaks clipped

Volume Inj. : 1 ul  
 Signal Phase : Rxi-1ms  
 Signal Info : 20M x 0.18mm x 0.18um





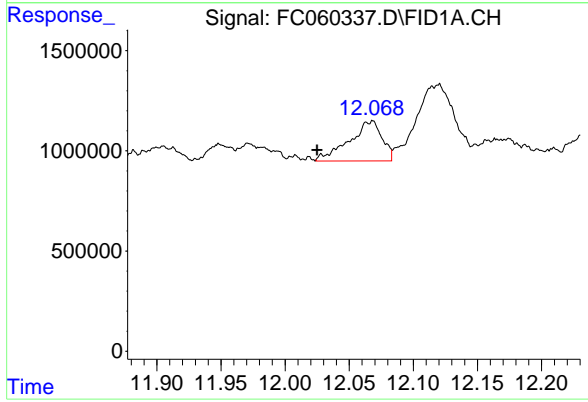
#9 ortho-Terphenyl (SURR)

R.T.: 0.000 min  
 Exp R.T.: 10.656 min  
 Response: 0  
 Conc: N.D.

Instrument :  
 FID\_C  
 ClientSampleId :  
 SW-W-A1

Manual Integrations  
 APPROVED

Reviewed By :Yogesh Patel 06/20/2022  
 Supervised By :Ankita Jodhani 06/20/2022



#12 1-chlorooctadecane (SURR)

R.T.: 12.068 min  
 Delta R.T.: 0.043 min  
 Response: 3557441  
 Conc: 28.69 ug/ml m