

Data Path : Z:\pestpcbsrv\HPCHEM1\FID\_C\Data\FC061923AL\  
 Data File : FC063879.D  
 Signal(s) : FID1A.ch  
 Acq On : 19 Jun 2023 11:07  
 Operator : YP/AJ  
 Sample : 03261-01DL2 50X  
 Misc :  
 ALS Vial : 13 Sample Multiplier: 1

**Instrument :**  
 FID\_C  
**ClientSampleId :**  
 CONC-1DL2

Integration File: autoint1.e  
 Quant Time: Jun 19 12:28:30 2023  
 Quant Method : Z:\pestpcbsrv\HPCHEM1\FID\_C\Method\Aliphatic EPH 052723.M  
 Quant Title : GC Extractables  
 QLast Update : Sat May 27 06:12:33 2023  
 Response via : Initial Calibration  
 Integrator: ChemStation

Volume Inj. : 1 ul  
 Signal Phase : Rxi-1ms  
 Signal Info : 20M x 0.18mm x 0.18um

Compound	R.T.	Response	Conc Units
-----			
System Monitoring Compounds			
12) S 1-chlorooctadecane (S...	12.961	134956	1.056 ug/ml
Spiked Amount	50.000	Recovery =	2.11%

Target Compounds

(f)=RT Delta > 1/2 Window

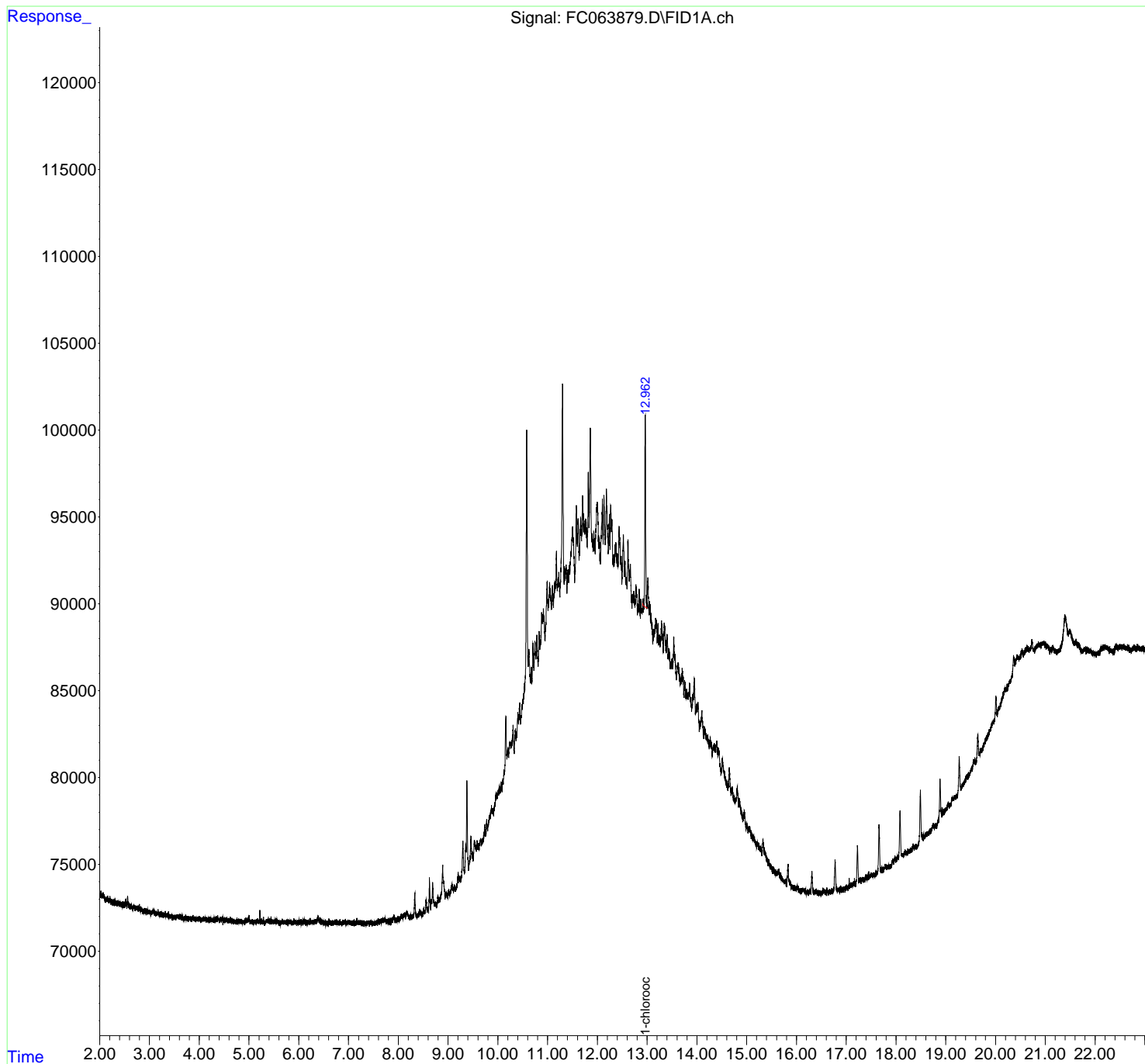
(m)=manual int.

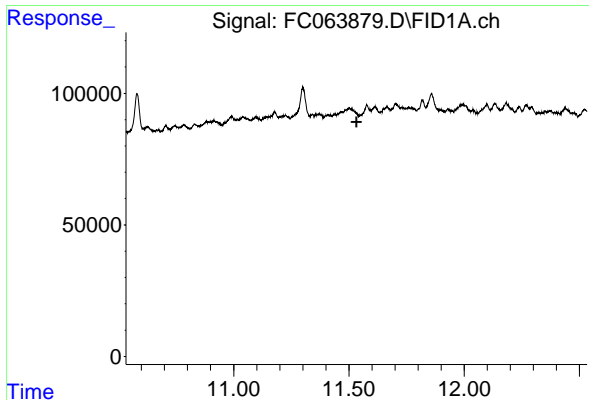
Data Path : Z:\pestpcbsrv\HPCHEM1\FID\_C\Data\FC061923AL\  
 Data File : FC063879.D  
 Signal(s) : FID1A.ch  
 Acq On : 19 Jun 2023 11:07  
 Operator : YP/AJ  
 Sample : 03261-01DL2 50X  
 Misc :  
 ALS Vial : 13 Sample Multiplier: 1

Instrument :  
 FID\_C  
 ClientSampleId :  
 CONC-1DL2

Integration File: autoint1.e  
 Quant Time: Jun 19 12:28:30 2023  
 Quant Method : Z:\pestpcbsrv\HPCHEM1\FID\_C\Method\Aliphatic EPH 052723.M  
 Quant Title : GC Extractables  
 QLast Update : Sat May 27 06:12:33 2023  
 Response via : Initial Calibration  
 Integrator: ChemStation

Volume Inj. : 1 ul  
 Signal Phase : Rxi-1ms  
 Signal Info : 20M x 0.18mm x 0.18um

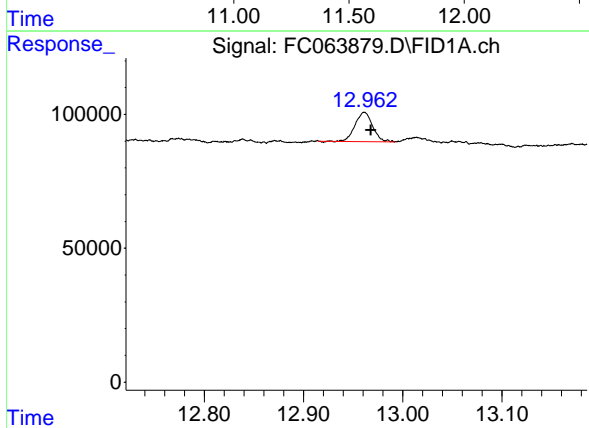




#9 ortho-Terphenyl (SURR)

R.T.: 0.000 min  
Exp R.T.: 11.533 min  
Response: 0  
Conc: N.D.

Instrument :  
FID\_C  
ClientSampleId :  
CONC-1DL2



#12 1-chlorooctadecane (SURR)

R.T.: 12.961 min  
Delta R.T.: -0.006 min  
Response: 134956  
Conc: 1.06 ug/ml