

Data Path : Z:\pestpcbsrv\HPCHEM1\FID_C\Data\FC062023AL\
 Data File : FC063930.D
 Signal(s) : FID1A.ch
 Acq On : 21 Jun 2023 01:27
 Operator : YP/AJ
 Sample : 03308-01
 Misc :
 ALS Vial : 41 Sample Multiplier: 1

Instrument :
 FID_C
 ClientSampleId :
 SP-LEFT

Integration File: autoint1.e
 Quant Time: Jun 21 02:33:34 2023
 Quant Method : Z:\pestpcbsrv\HPCHEM1\FID_C\Method\Aliphatic EPH 052723.M
 Quant Title : GC Extractables
 QLast Update : Sat May 27 06:12:33 2023
 Response via : Initial Calibration
 Integrator: ChemStation

Volume Inj. : 1 ul
 Signal Phase : Rxi-1ms
 Signal Info : 20M x 0.18mm x 0.18um

Compound	R.T.	Response	Conc Units

System Monitoring Compounds			
12) S 1-chlorooctadecane (S...	12.962	7514248	58.809 ug/ml
Spiked Amount	50.000	Recovery	= 117.62%

Target Compounds

(f)=RT Delta > 1/2 Window

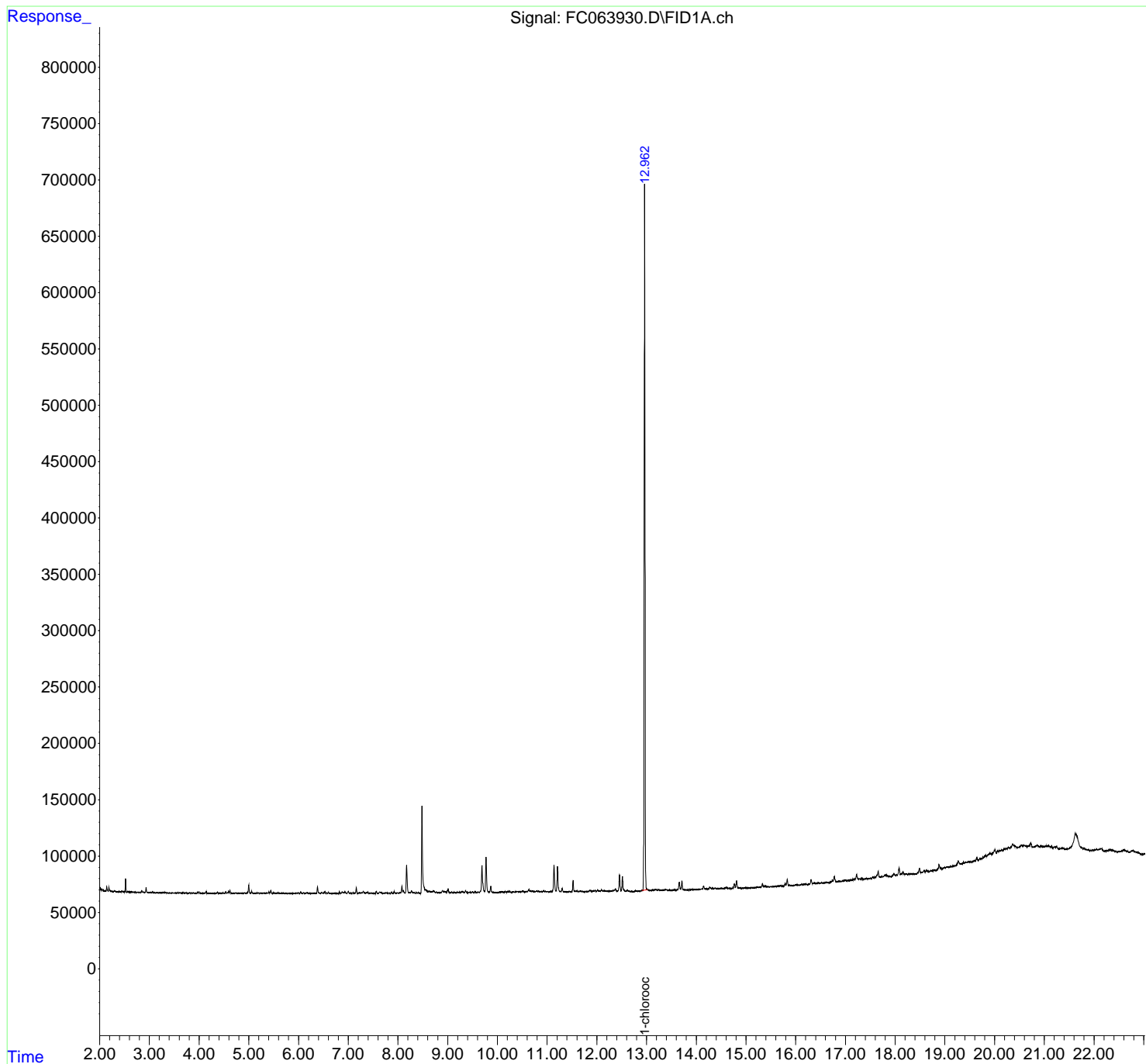
(m)=manual int.

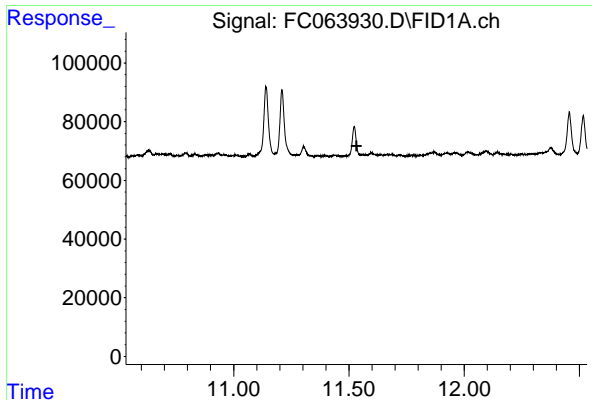
Data Path : Z:\pestpcbsrv\HPCHEM1\FID_C\Data\FC062023AL\
 Data File : FC063930.D
 Signal(s) : FID1A.ch
 Acq On : 21 Jun 2023 01:27
 Operator : YP/AJ
 Sample : 03308-01
 Misc :
 ALS Vial : 41 Sample Multiplier: 1

Instrument :
 FID_C
 ClientSampleId :
 SP-LEFT

Integration File: autoint1.e
 Quant Time: Jun 21 02:33:34 2023
 Quant Method : Z:\pestpcbsrv\HPCHEM1\FID_C\Method\Aliphatic EPH 052723.M
 Quant Title : GC Extractables
 QLast Update : Sat May 27 06:12:33 2023
 Response via : Initial Calibration
 Integrator: ChemStation

Volume Inj. : 1 ul
 Signal Phase : Rxi-1ms
 Signal Info : 20M x 0.18mm x 0.18um

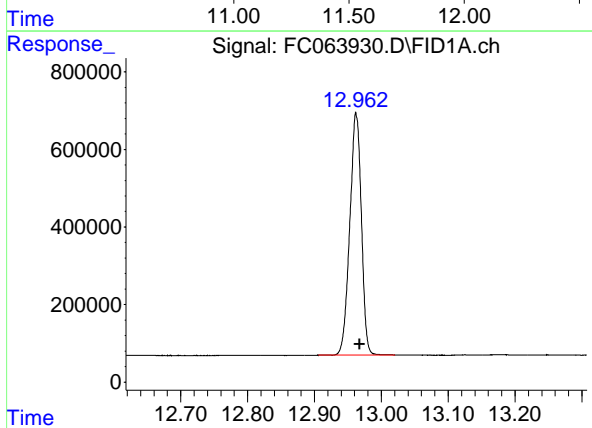




#9 ortho-Terphenyl (SURR)

R.T.: 0.000 min
Exp R.T.: 11.533 min
Response: 0
Conc: N.D.

Instrument :
FID_C
ClientSampleId :
SP-LEFT



#12 1-chlorooctadecane (SURR)

R.T.: 12.962 min
Delta R.T.: -0.005 min
Response: 7514248
Conc: 58.81 ug/ml