

Data Path : Z:\pestpcbsrv\HPCHEM1\FID\_C\Data\FC062119AL\  
 Data File : FC041930.D  
 Signal(s) : FID1A.CH  
 Acq On : 21 Jun 2019 12:17  
 Operator : DD\AJ  
 Sample : K3455-07RE  
 Misc :  
 ALS Vial : 5 Sample Multiplier: 1

Integration File: autoint1.e  
 Quant Time: Jun 22 01:35:59 2019  
 Quant Method : Z:\pestpcbsrv\HPCHEM1\FID\_C\Method\Alaphatic EPH 061219.M  
 Quant Title : GC Extractables  
 QLast Update : Thu Jun 13 07:03:58 2019  
 Response via : Initial Calibration  
 Integrator: ChemStation 6890 Scale Mode: Large solvent peaks clipped

Volume Inj. : 1 ul  
 Signal Phase : Rxi-1ms  
 Signal Info : 20M x 0.18mm x 0.18um

Compound	R.T.	Response	Conc Units
System Monitoring Compounds			
9) S ortho-Terphenyl (SURR)	11.706	2621087	19.701 ug/ml
Spiked Amount	50.000	Recovery =	39.40%
12) S 1-chlorooctadecane (S...	13.133	2588848	23.560 ug/ml
Spiked Amount	50.000	Recovery =	47.12%

Target Compounds

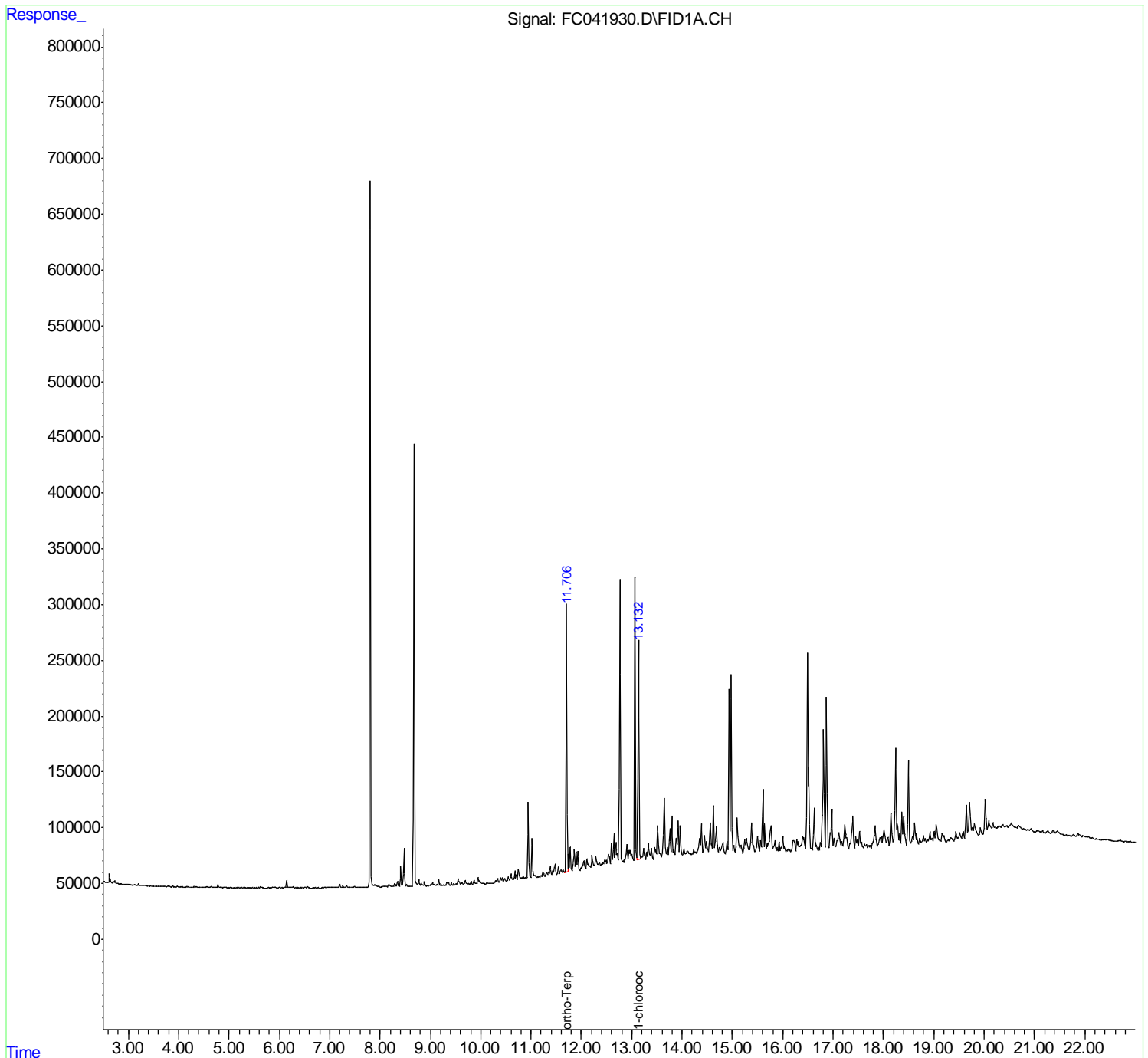
(f)=RT Delta > 1/2 Window

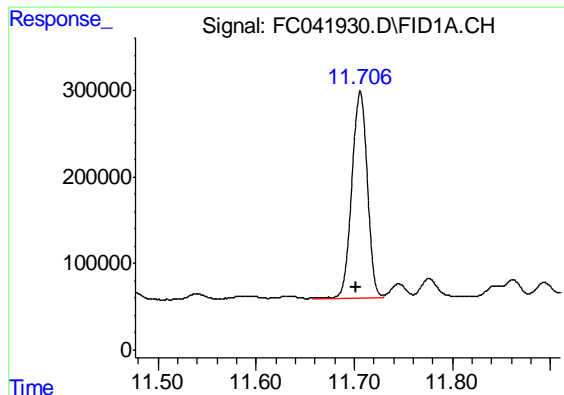
(m)=manual int.

Data Path : Z:\pestpcbsrv\HPCHEM1\FID\_C\Data\FC062119AL\  
 Data File : FC041930.D  
 Signal(s) : FID1A.CH  
 Acq On : 21 Jun 2019 12:17  
 Operator : DD\AJ  
 Sample : K3455-07RE  
 Misc :  
 ALS Vial : 5 Sample Multiplier: 1

Integration File: autoint1.e  
 Quant Time: Jun 22 01:35:59 2019  
 Quant Method : Z:\pestpcbsrv\HPCHEM1\FID\_C\Method\Aliphatic EPH 061219.M  
 Quant Title : GC Extractables  
 QLast Update : Thu Jun 13 07:03:58 2019  
 Response via : Initial Calibration  
 Integrator: ChemStation 6890 Scale Mode: Large solvent peaks clipped

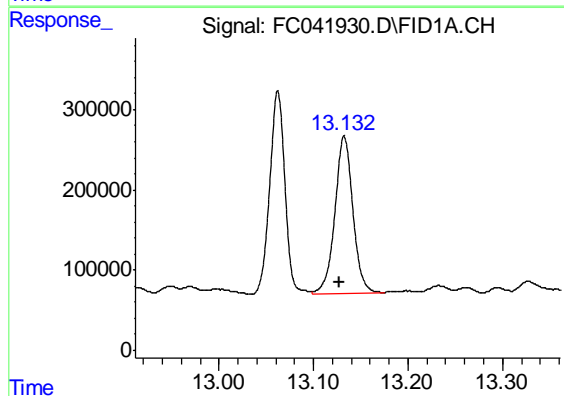
Volume Inj. : 1 ul  
 Signal Phase : Rxi-1ms  
 Signal Info : 20M x 0.18mm x 0.18um





#9 ortho-Terphenyl (SURR)

R.T.: 11.706 min  
Delta R.T.: 0.004 min  
Response: 2621087  
Conc: 19.70 ug/ml



#12 1-chlorooctadecane (SURR)

R.T.: 13.133 min  
Delta R.T.: 0.004 min  
Response: 2588848  
Conc: 23.56 ug/ml