

Data Path : Z:\pestpcbsrv\HPCHEM1\FID\_C\Data\FC062123AL\  
 Data File : FC063937.D  
 Signal(s) : FID1A.ch  
 Acq On : 21 Jun 2023 09:22  
 Operator : YP/AJ  
 Sample : 03314-04  
 Misc :  
 ALS Vial : 11 Sample Multiplier: 1

Integration File: autoint1.e  
 Quant Time: Jun 21 23:09:05 2023  
 Quant Method : Z:\pestpcbsrv\HPCHEM1\FID\_C\Method\Aliphatic EPH 052723.M  
 Quant Title : GC Extractables  
 QLast Update : Sat May 27 06:12:33 2023  
 Response via : Initial Calibration  
 Integrator: ChemStation

Volume Inj. : 1 ul  
 Signal Phase : Rxi-1ms  
 Signal Info : 20M x 0.18mm x 0.18um

Compound	R.T.	Response	Conc Units
-----			
System Monitoring Compounds			
9) S ortho-Terphenyl (SURR)	11.523	5084573	27.863 ug/ml
Spiked Amount	50.000	Recovery	= 55.73%
12) S 1-chlorooctadecane (S...	12.960	5445148	42.616 ug/ml
Spiked Amount	50.000	Recovery	= 85.23%
Target Compounds			
19) T n-Tetratriacontane (C34)	19.324	65771	0.533 ug/ml
-----			

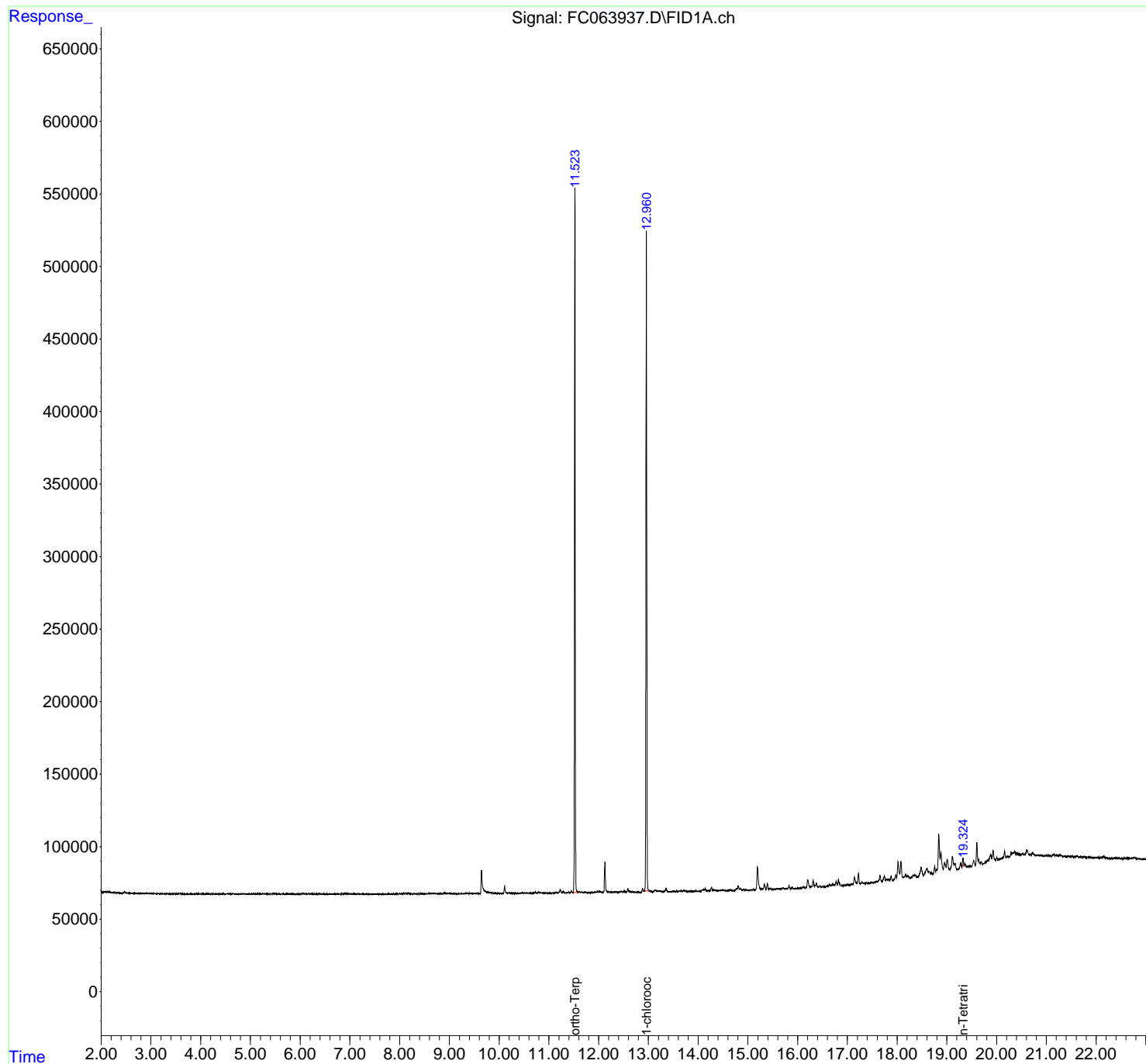
(f)=RT Delta > 1/2 Window

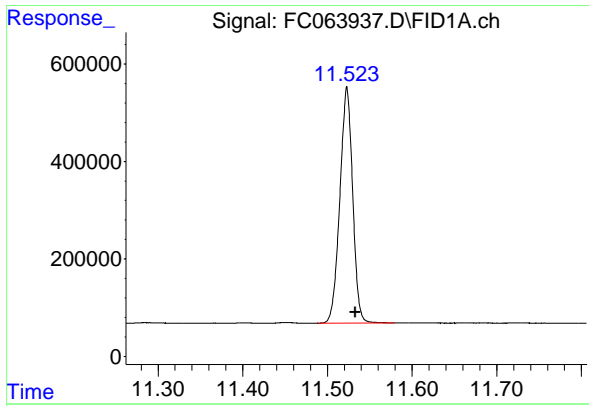
(m)=manual int.

Data Path : Z:\pestpcbsrv\HPCHEM1\FID\_C\Data\FC062123AL\  
Data File : FC063937.D  
Signal(s) : FID1A.ch  
Acq On : 21 Jun 2023 09:22  
Operator : YP/AJ  
Sample : 03314-04  
Misc :  
ALS Vial : 11 Sample Multiplier: 1

Integration File: autoint1.e  
Quant Time: Jun 21 23:09:05 2023  
Quant Method : Z:\pestpcbsrv\HPCHEM1\FID\_C\Method\Aliphatic EPH 052723.M  
Quant Title : GC Extractables  
QLast Update : Sat May 27 06:12:33 2023  
Response via : Initial Calibration  
Integrator: ChemStation

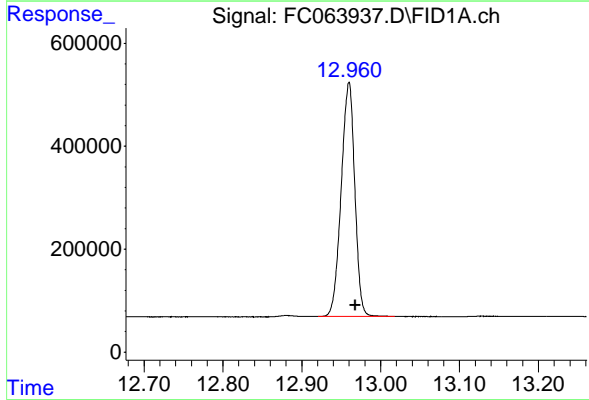
Volume Inj. : 1 ul  
Signal Phase : Rxi-1ms  
Signal Info : 20M x 0.18mm x 0.18um





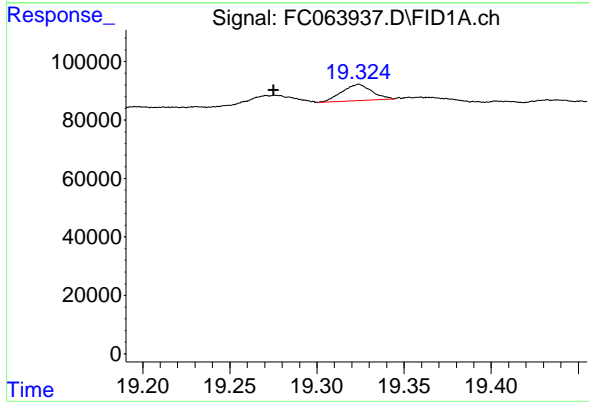
#9 ortho-Terphenyl (SURR)

R.T.: 11.523 min  
Delta R.T.: -0.010 min  
Response: 5084573  
Conc: 27.86 ug/ml



#12 1-chlorooctadecane (SURR)

R.T.: 12.960 min  
Delta R.T.: -0.008 min  
Response: 5445148  
Conc: 42.62 ug/ml



#19 n-Tetratriacontane (C34)

R.T.: 19.324 min  
Delta R.T.: 0.049 min  
Response: 65771  
Conc: 0.53 ug/ml