

Data Path : Z:\pestpcbsrv\HPCHEM1\FID\_C\Data\FC062321AL\  
 Data File : FC054408.D  
 Signal(s) : FID1A.CH  
 Acq On : 24 Jun 2021 3:09  
 Operator : DD\AJ  
 Sample : I.BLK  
 Misc :  
 ALS Vial : 1 Sample Multiplier: 1

Instrument :  
 FID\_C  
 ClientSampleId :

Integration File: autoint1.e  
 Quant Time: Jun 24 06:30:08 2021  
 Quant Method : Z:\pestpcbsrv\HPCHEM1\FID\_C\Method\Alaphatic EPH 061021.M  
 Quant Title : GC Extractables  
 QLast Update : Fri Jun 11 04:43:57 2021  
 Response via : Initial Calibration  
 Integrator: ChemStation 6890 Scale Mode: Large solvent peaks clipped

Volume Inj. : 1 ul  
 Signal Phase : Rxi-1ms  
 Signal Info : 20M x 0.18mm x 0.18um

Compound	R.T.	Response	Conc Units
-----			
System Monitoring Compounds			
Target Compounds			
21) T n-Octatriacontane (C38)	20.549	737231	7.212 ug/ml
-----			

(f)=RT Delta > 1/2 Window

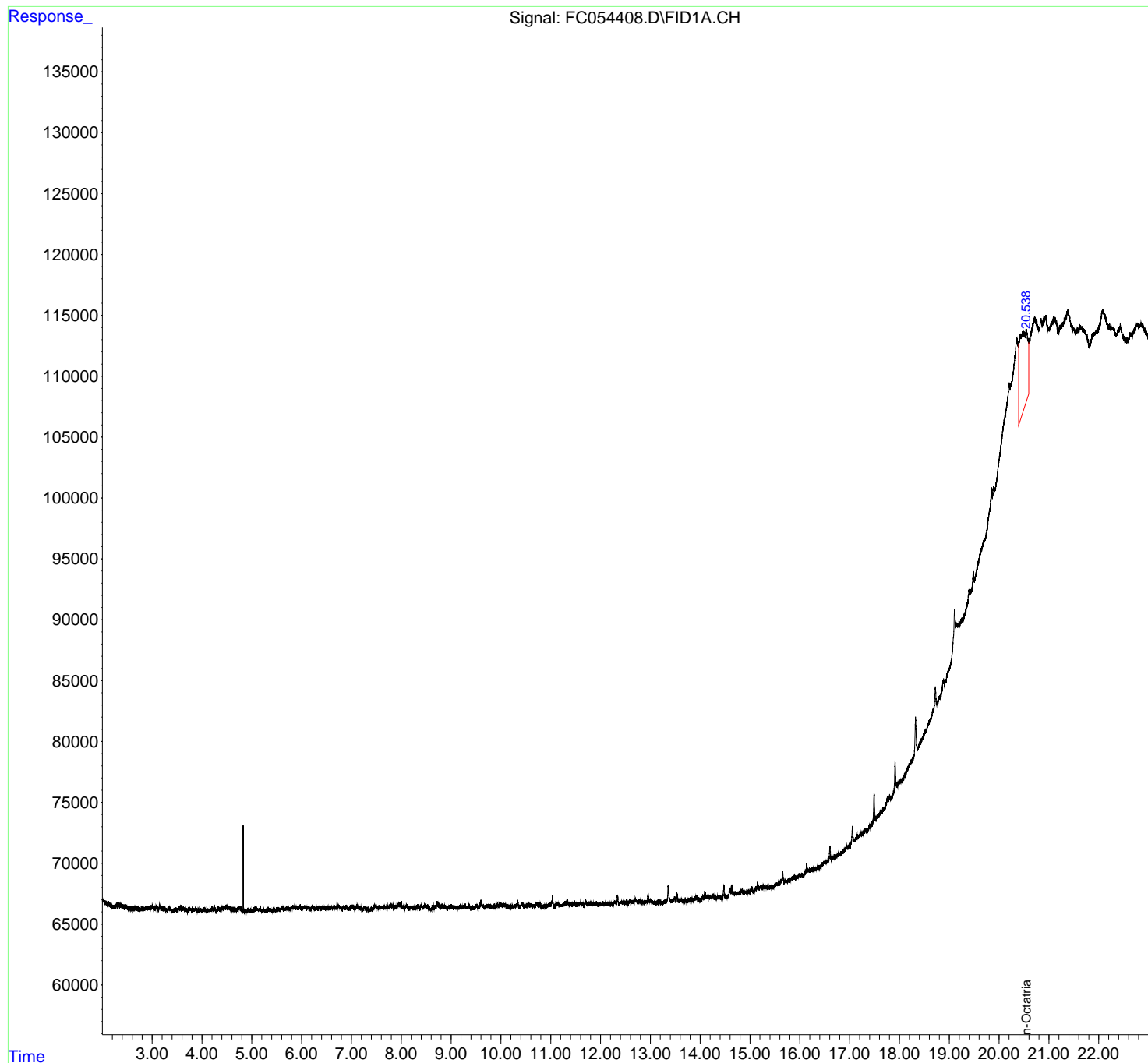
(m)=manual int.

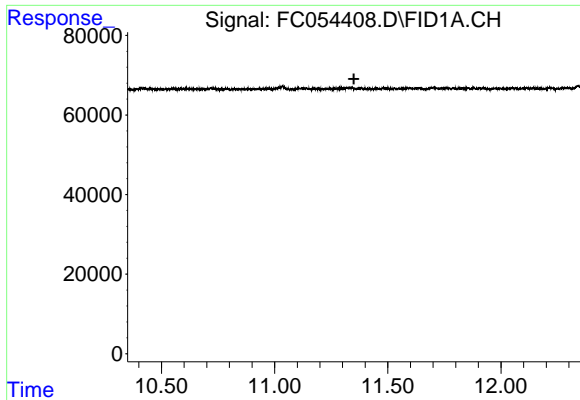
Data Path : Z:\pestpcbsrv\HPCHEM1\FID\_C\Data\FC062321AL\  
Data File : FC054408.D  
Signal(s) : FID1A.CH  
Acq On : 24 Jun 2021 3:09  
Operator : DD\AJ  
Sample : I.BLK  
Misc :  
ALS Vial : 1 Sample Multiplier: 1

Instrument :  
FID\_C  
ClientSampled :

Integration File: autoint1.e  
Quant Time: Jun 24 06:30:08 2021  
Quant Method : Z:\pestpcbsrv\HPCHEM1\FID\_C\Method\Aliphatic EPH 061021.M  
Quant Title : GC Extractables  
QLast Update : Fri Jun 11 04:43:57 2021  
Response via : Initial Calibration  
Integrator: ChemStation 6890 Scale Mode: Large solvent peaks clipped

Volume Inj. : 1 ul  
Signal Phase : Rxi-1ms  
Signal Info : 20M x 0.18mm x 0.18um

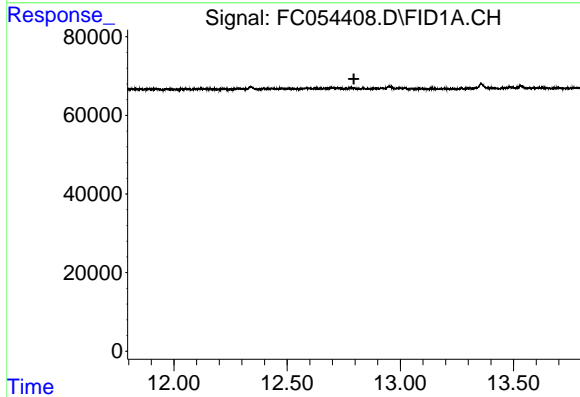




#9 ortho-Terphenyl (SURR)

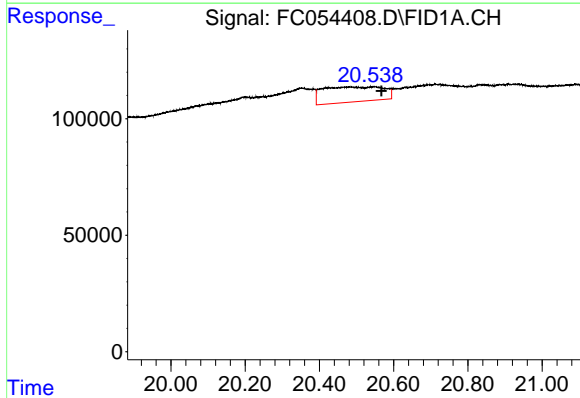
R.T.: 0.000 min  
 Exp R.T. : 11.350 min  
 Response: 0  
 Conc: N.D.

Instrument :  
 FID\_C  
 ClientSampleId :



#12 1-chlorooctadecane (SURR)

R.T.: 0.000 min  
 Exp R.T. : 12.795 min  
 Response: 0  
 Conc: N.D.



#21 n-Octatriacontane (C38)

R.T.: 20.549 min  
 Delta R.T.: -0.018 min  
 Response: 737231  
 Conc: 7.21 ug/ml