

Data Path : Z:\pestpcbsrv\HPCHEM1\FID\_C\Data\FC062325AL\  
 Data File : FC069255.D  
 Signal(s) : FID1A.ch  
 Acq On : 23 Jun 2025 23:29  
 Operator : YP/AJ  
 Sample : 20 PPM ALIPHATIC HC STD  
 Misc :  
 ALS Vial : 2 Sample Multiplier: 1

Instrument :  
 FID\_C  
 ClientSampleId :  
 20 PPM ALIPHATIC HC STD

Integration File: autoint1.e  
 Quant Time: Jun 24 01:27:55 2025  
 Quant Method : Z:\pestpcbsrv\HPCHEM1\FID\_C\Method\Aliphatic EPH 061825.M  
 Quant Title : GC Extractables  
 QLast Update : Wed Jun 18 14:24:27 2025  
 Response via : Initial Calibration  
 Integrator: ChemStation

Volume Inj. : 1 ul  
 Signal Phase : Rxi-1ms  
 Signal Info : 20M x 0.18mm x 0.18um

Compound	R.T.	Response	Conc Units
System Monitoring Compounds			
9) S ortho-Terphenyl (SURR)	11.680	3436683	19.893 ug/ml
Spiked Amount 50.000		Recovery =	39.79%
12) S 1-chlorooctadecane (S...)	13.116	2615353	20.019 ug/ml
Spiked Amount 50.000		Recovery =	40.04%
Target Compounds			
1) T n-Nonane (C9)	3.411	2830605	19.903 ug/ml
2) T n-Decane (C10)	4.482	2948703	20.142 ug/ml
3) T A~Naphthalene (C11.7)	6.077	3227376	20.059 ug/ml
4) T n-Dodecane (C12)	6.507	3061245	20.216 ug/ml
5) T A~2-methylnaphthalene...	7.137	3239093	20.468 ug/ml
6) T n-Tetradecane (C14)	8.307	3073517	19.828 ug/ml
7) T n-Hexadecane (C16)	9.912	3091878	18.920 ug/ml
8) T n-Octadecane (C18)	11.357	3009580	18.433 ug/ml
10) T n-Eicosane (C20)	12.669	2864316	18.765 ug/ml
11) T n-Heneicosane (C21)	13.282	2798862	18.989 ug/ml
13) T n-Docosane (C22)	13.870	2733742	19.000 ug/ml
14) T n-Tetracosane (C24)	14.975	2640588	19.144 ug/ml
15) T n-Hexacosane (C26)	15.997	2530040	19.354 ug/ml
16) T n-Octacosane (C28)	16.949	2474266	20.062 ug/ml
17) T n-Tricontane (C30)	17.837	2533050	21.307 ug/ml
18) T n-Dotriacontane (C32)	18.671	2482052	22.701 ug/ml
19) T n-Tetratriacontane (C34)	19.458	2195735	22.738 ug/ml
20) T n-Hexatriacontane (C36)	20.198	1756991	21.319 ug/ml
21) T n-Octatriacontane (C38)	20.966	1286148	17.210 ug/ml
22) T n-Tetracontane (C40)	21.938	1011073	14.277 ug/ml

(f)=RT Delta > 1/2 Window

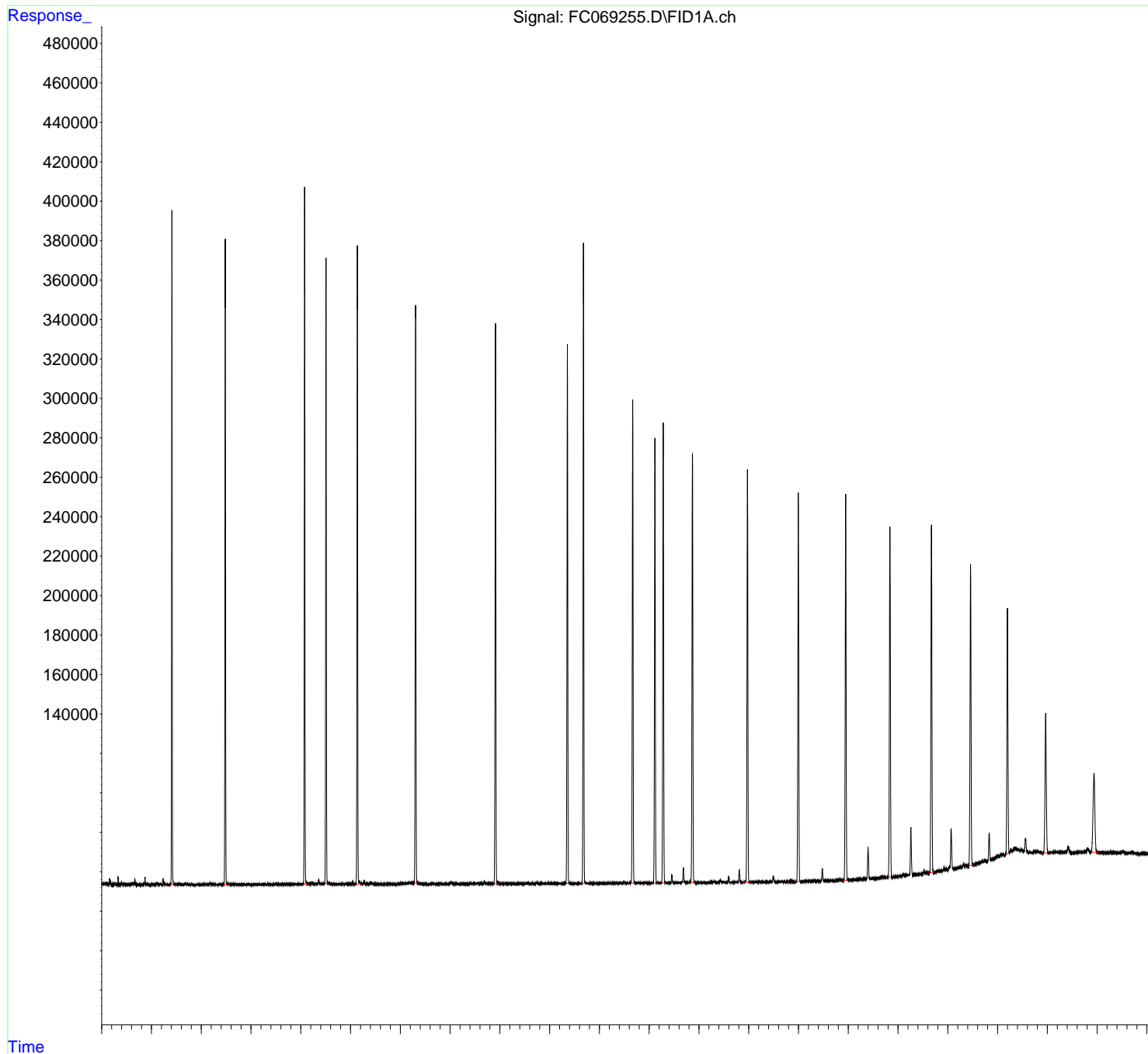
(m)=manual int.

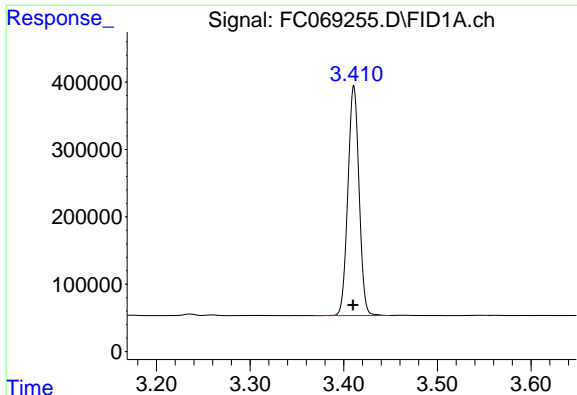
Data Path : Z:\pestpcbsrv\HPCHEM1\FID\_C\Data\FC062325AL\  
 Data File : FC069255.D  
 Signal(s) : FID1A.ch  
 Acq On : 23 Jun 2025 23:29  
 Operator : YP/AJ  
 Sample : 20 PPM ALIPHATIC HC STD  
 Misc :  
 ALS Vial : 2 Sample Multiplier: 1

**Instrument :**  
 FID\_C  
**ClientSampleId :**  
 20 PPM ALIPHATIC HC STD

Integration File: autoint1.e  
 Quant Time: Jun 24 01:27:55 2025  
 Quant Method : Z:\pestpcbsrv\HPCHEM1\FID\_C\Method\Aliphatic EPH 061825.M  
 Quant Title : GC Extractables  
 QLast Update : Wed Jun 18 14:24:27 2025  
 Response via : Initial Calibration  
 Integrator: ChemStation

Volume Inj. : 1 u1  
 Signal Phase : Rxi-1ms  
 Signal Info : 20M x 0.18mm x 0.18um

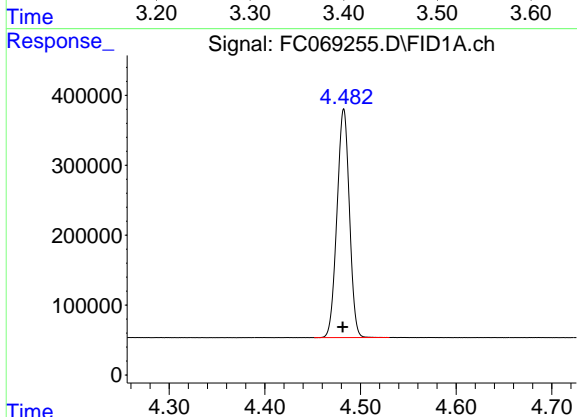




#1 n-Nonane (C9)

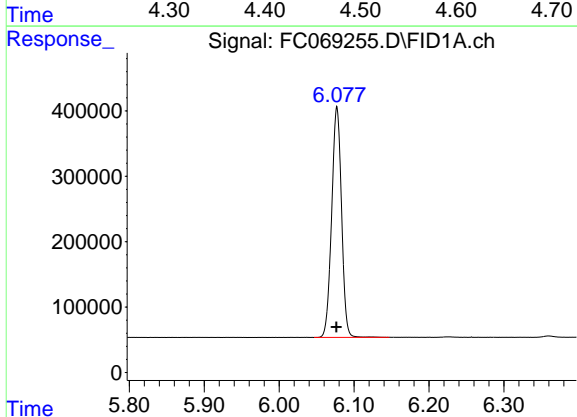
R.T.: 3.411 min  
 Delta R.T.: 0.000 min  
 Response: 2830605  
 Conc: 19.90 ug/ml

Instrument :  
 FID\_C  
 ClientSampleId :  
 20 PPM ALIPHATIC HC STD



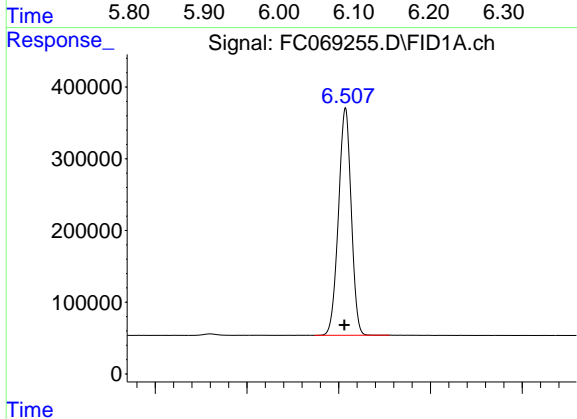
#2 n-Decane (C10)

R.T.: 4.482 min  
 Delta R.T.: 0.001 min  
 Response: 2948703  
 Conc: 20.14 ug/ml



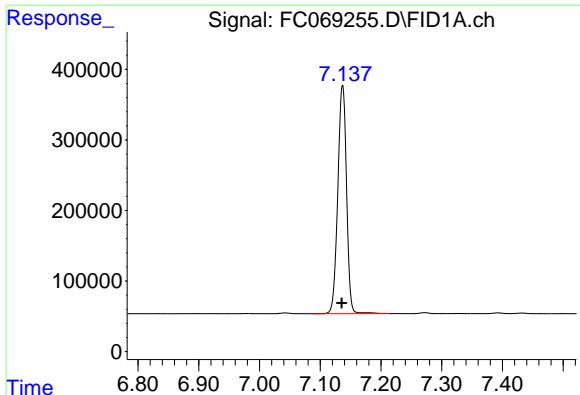
#3 A~Naphthalene (C11.7)

R.T.: 6.077 min  
 Delta R.T.: 0.000 min  
 Response: 3227376  
 Conc: 20.06 ug/ml



#4 n-Dodecane (C12)

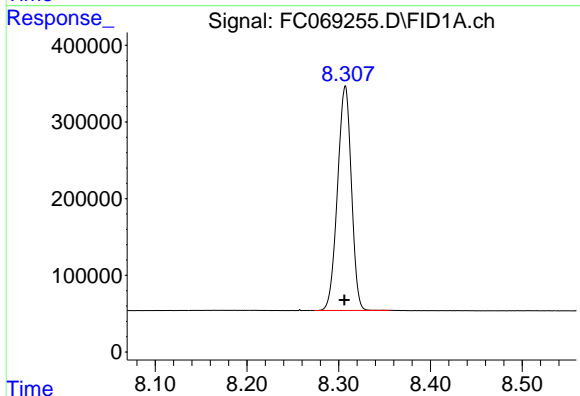
R.T.: 6.507 min  
 Delta R.T.: 0.001 min  
 Response: 3061245  
 Conc: 20.22 ug/ml



#5 A~2-methylnaphthalene (C12.89)

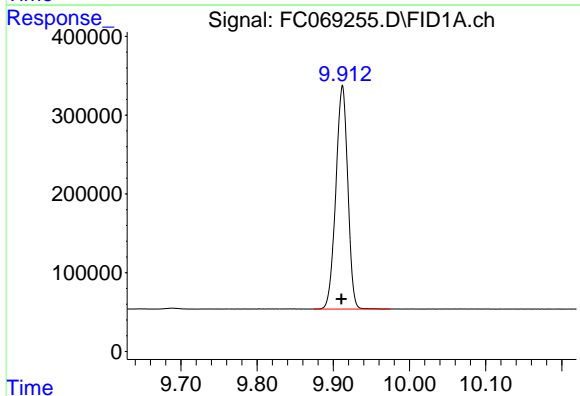
R.T.: 7.137 min  
 Delta R.T.: 0.001 min  
 Response: 3239093  
 Conc: 20.47 ug/ml

Instrument :  
 FID\_C  
 ClientSampleId :  
 20 PPM ALIPHATIC HC STD



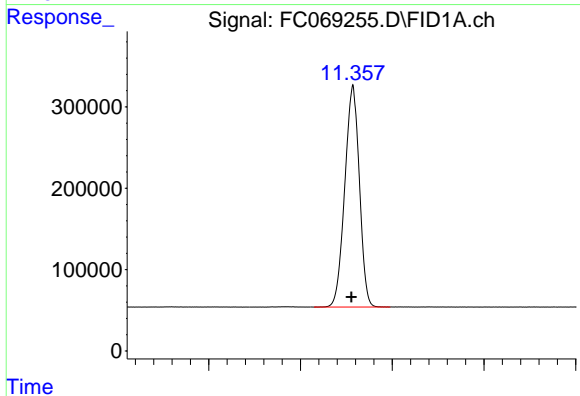
#6 n-Tetradecane (C14)

R.T.: 8.307 min  
 Delta R.T.: 0.001 min  
 Response: 3073517  
 Conc: 19.83 ug/ml



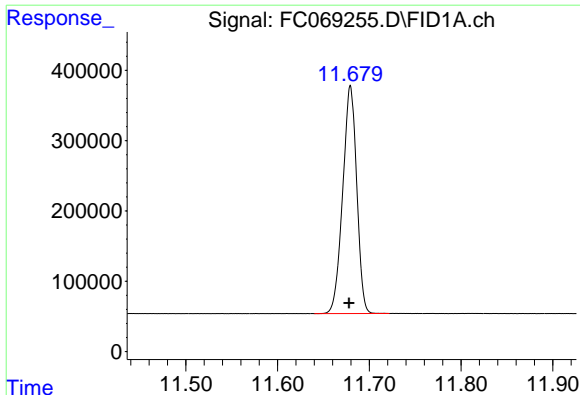
#7 n-Hexadecane (C16)

R.T.: 9.912 min  
 Delta R.T.: 0.001 min  
 Response: 3091878  
 Conc: 18.92 ug/ml



#8 n-Octadecane (C18)

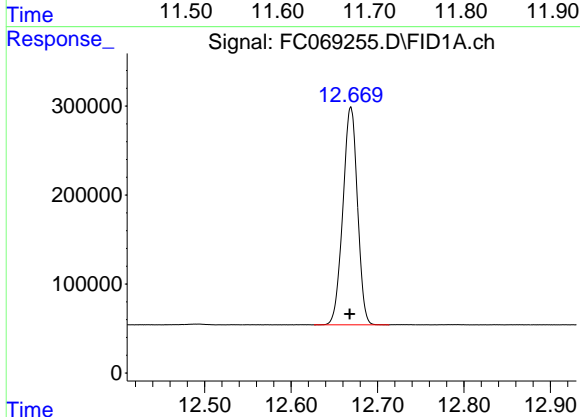
R.T.: 11.357 min  
 Delta R.T.: 0.001 min  
 Response: 3009580  
 Conc: 18.43 ug/ml



#9 ortho-Terphenyl (SURR)

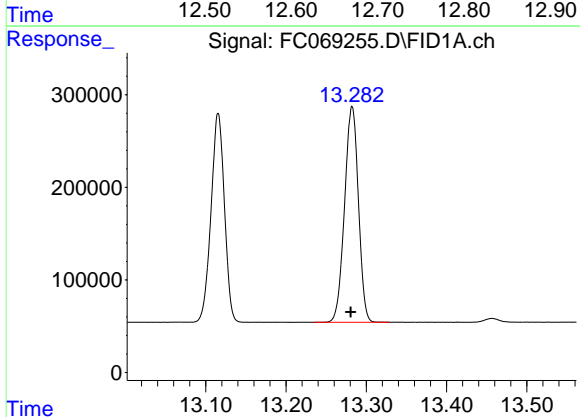
R.T.: 11.680 min  
 Delta R.T.: 0.002 min  
 Response: 3436683  
 Conc: 19.89 ug/ml

Instrument :  
 FID\_C  
 ClientSampleId :  
 20 PPM ALIPHATIC HC STD



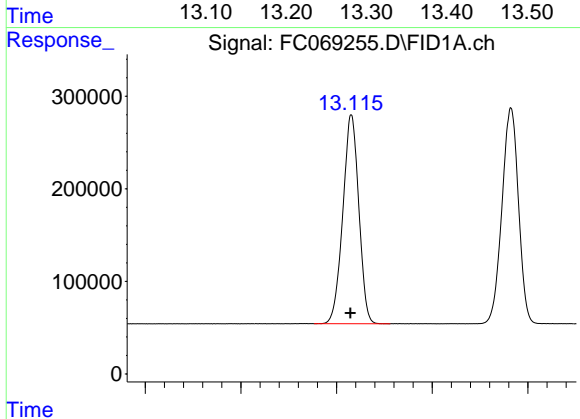
#10 n-Eicosane (C20)

R.T.: 12.669 min  
 Delta R.T.: 0.001 min  
 Response: 2864316  
 Conc: 18.77 ug/ml



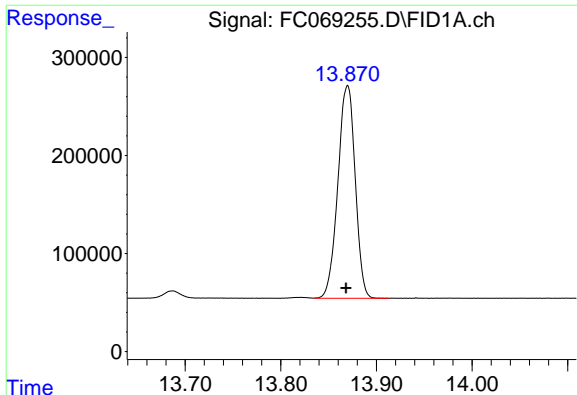
#11 n-Heneicosane (C21)

R.T.: 13.282 min  
 Delta R.T.: 0.002 min  
 Response: 2798862  
 Conc: 18.99 ug/ml



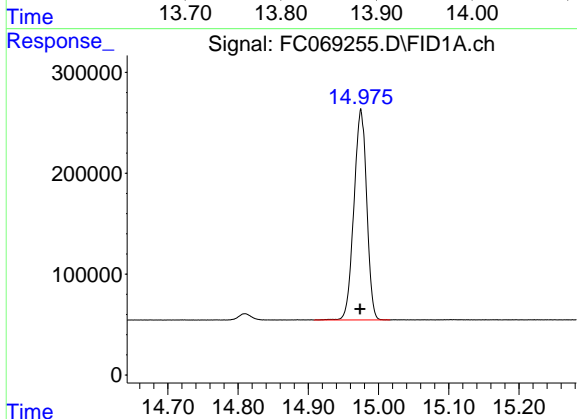
#12 1-chlorooctadecane (SURR)

R.T.: 13.116 min  
 Delta R.T.: 0.001 min  
 Response: 2615353  
 Conc: 20.02 ug/ml

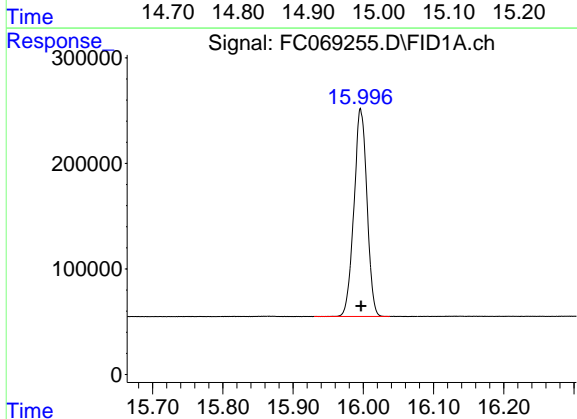


#13 n-Docosane (C22)  
 R.T.: 13.870 min  
 Delta R.T.: 0.001 min  
 Response: 2733742  
 Conc: 19.00 ug/ml

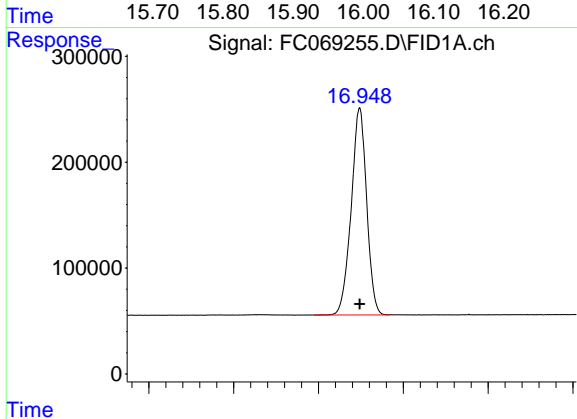
Instrument :  
 FID\_C  
 ClientSampleId :  
 20 PPM ALIPHATIC HC STD



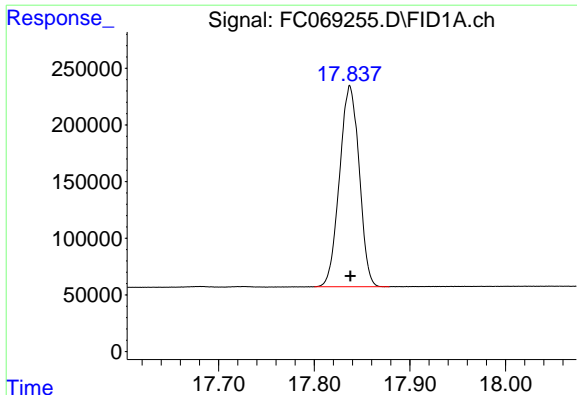
#14 n-Tetracosane (C24)  
 R.T.: 14.975 min  
 Delta R.T.: 0.001 min  
 Response: 2640588  
 Conc: 19.14 ug/ml



#15 n-Hexacosane (C26)  
 R.T.: 15.997 min  
 Delta R.T.: 0.000 min  
 Response: 2530040  
 Conc: 19.35 ug/ml



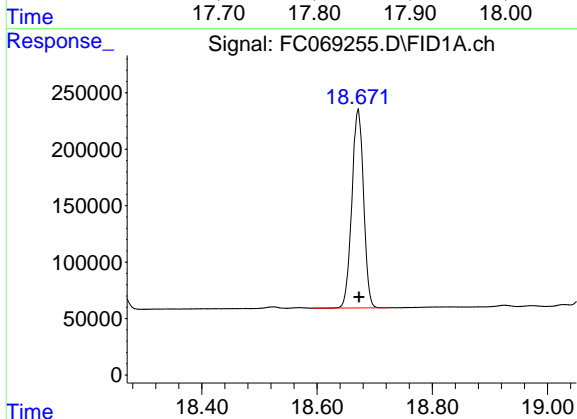
#16 n-Octacosane (C28)  
 R.T.: 16.949 min  
 Delta R.T.: 0.000 min  
 Response: 2474266  
 Conc: 20.06 ug/ml



#17 n-Tricontane (C30)

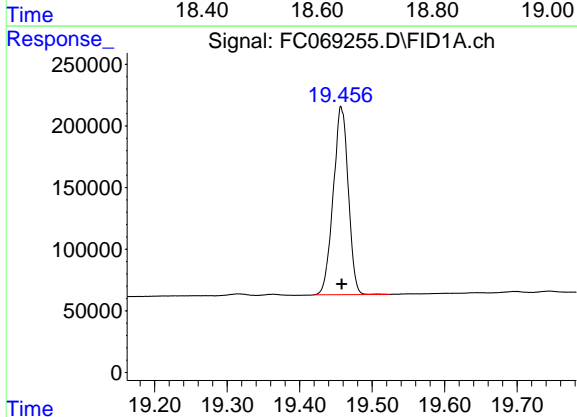
R.T.: 17.837 min  
Delta R.T.: 0.000 min  
Response: 2533050  
Conc: 21.31 ug/ml

Instrument :  
FID\_C  
ClientSampleId :  
20 PPM ALIPHATIC HC STD



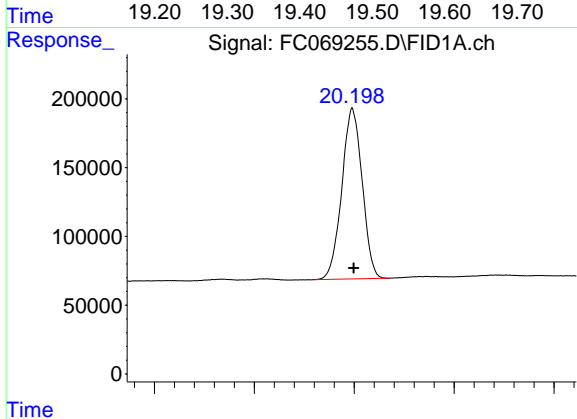
#18 n-Dotriacontane (C32)

R.T.: 18.671 min  
Delta R.T.: -0.002 min  
Response: 2482052  
Conc: 22.70 ug/ml



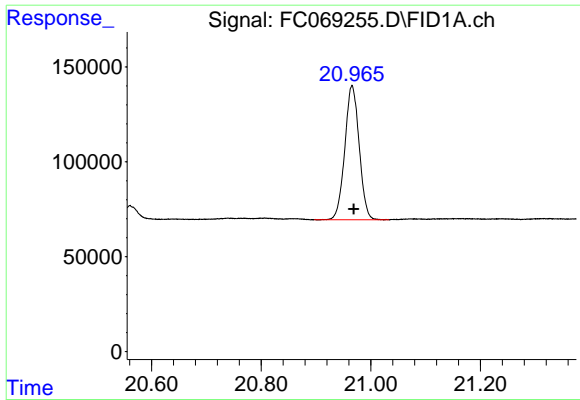
#19 n-Tetratriacontane (C34)

R.T.: 19.458 min  
Delta R.T.: 0.000 min  
Response: 2195735  
Conc: 22.74 ug/ml



#20 n-Hexatriacontane (C36)

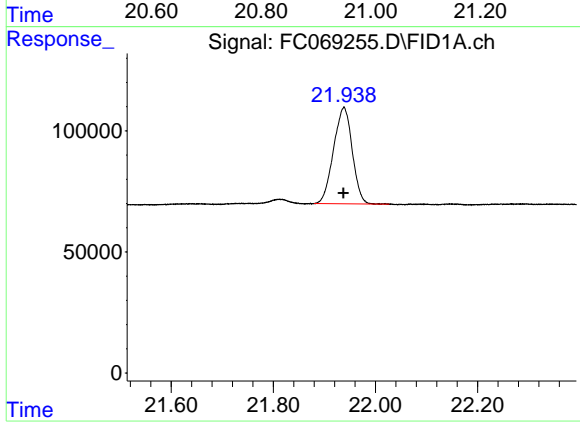
R.T.: 20.198 min  
Delta R.T.: -0.001 min  
Response: 1756991  
Conc: 21.32 ug/ml



#21 n-Octatriacontane (C38)

R.T.: 20.966 min  
Delta R.T.: -0.003 min  
Response: 1286148  
Conc: 17.21 ug/ml

Instrument :  
FID\_C  
ClientSampleId :  
20 PPM ALIPHATIC HC STD



#22 n-Tetracontane (C40)

R.T.: 21.938 min  
Delta R.T.: 0.000 min  
Response: 1011073  
Conc: 14.28 ug/ml