

Data Path : Z:\pestpcbsrv\HPCHEM1\FID_C\Data\FC062419AL\
 Data File : FC041979.D
 Signal(s) : FID1A.CH
 Acq On : 24 Jun 2019 19:17
 Operator : DD\AJ
 Sample : K3482-04
 Misc :
 ALS Vial : 13 Sample Multiplier: 1

Integration File: autoint1.e
 Quant Time: Jun 25 01:03:50 2019
 Quant Method : Z:\pestpcbsrv\HPCHEM1\FID_C\Method\Alaphatic EPH 061219.M
 Quant Title : GC Extractables
 QLast Update : Thu Jun 13 07:03:58 2019
 Response via : Initial Calibration
 Integrator: ChemStation 6890 Scale Mode: Large solvent peaks clipped

Volume Inj. : 1 ul
 Signal Phase : Rxi-1ms
 Signal Info : 20M x 0.18mm x 0.18um

Compound	R.T.	Response	Conc Units

System Monitoring Compounds			
9) S ortho-Terphenyl (SURR)	11.702	3318230	24.941 ug/ml
Spiked Amount	50.000	Recovery	= 49.88%
12) S 1-chlorooctadecane (S...	13.126	2668752	24.288 ug/ml
Spiked Amount	50.000	Recovery	= 48.58%
Target Compounds			
6) T n-Tetradecane (C14)	8.411f	438934	3.632 ug/ml
16) T n-Octacosane (C28)	16.938	299157	2.455 ug/ml
17) T n-Tricontane (C30)	17.824	396604	3.402 ug/ml
18) T n-Dotriacontane (C32)	18.653	225398	2.088 ug/ml

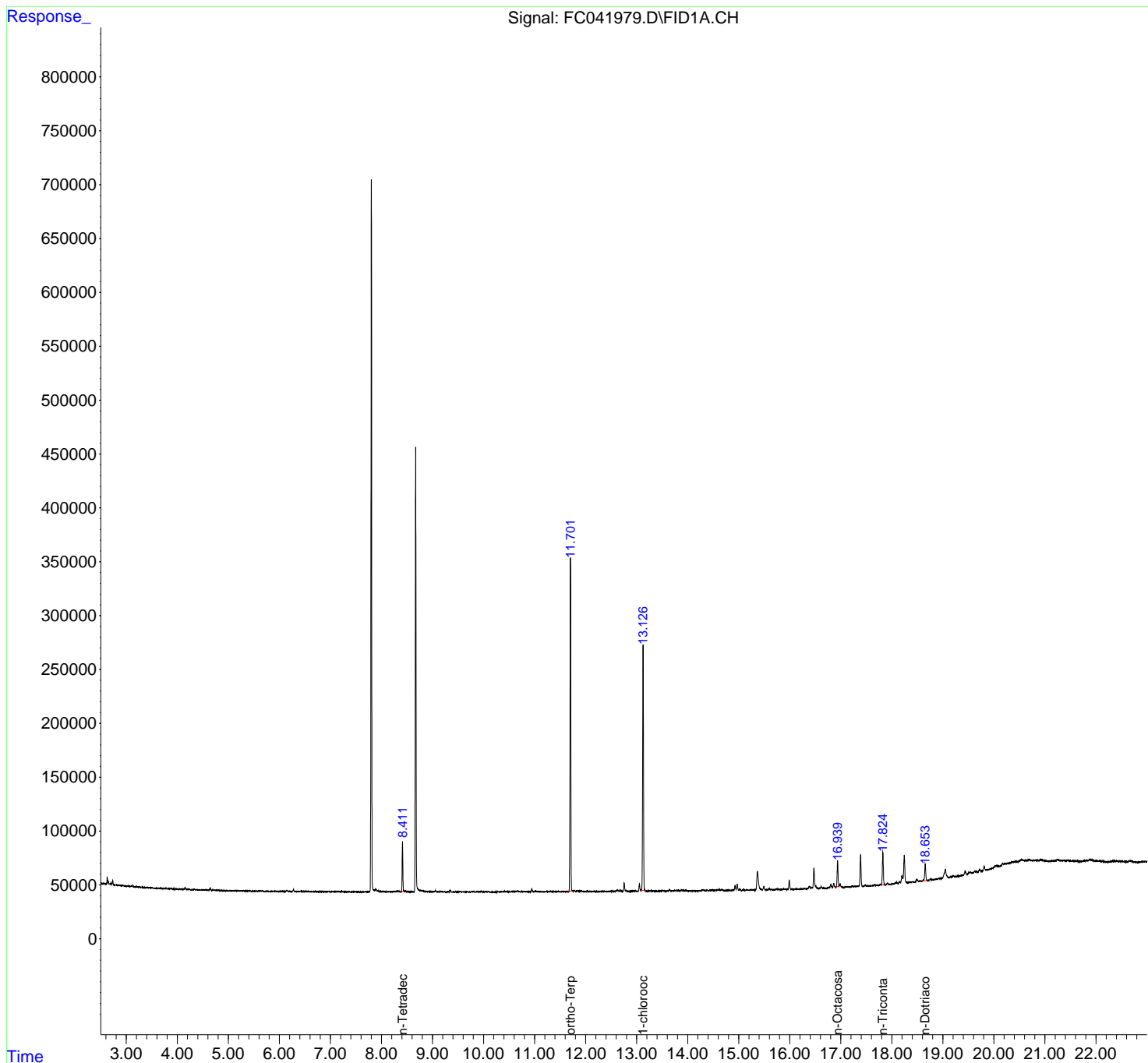
(f)=RT Delta > 1/2 Window

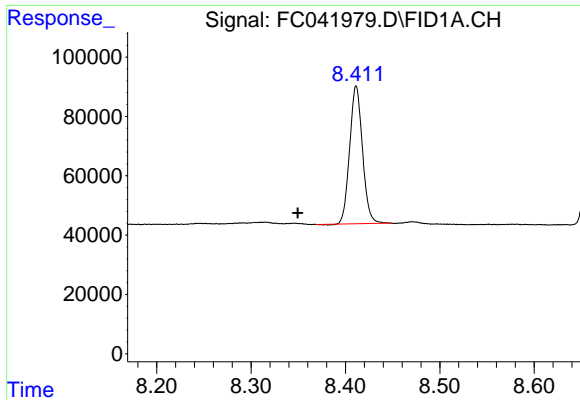
(m)=manual int.

Data Path : Z:\pestpcbsrv\HPCHEM1\FID_C\Data\FC062419AL\
Data File : FC041979.D
Signal(s) : FID1A.CH
Acq On : 24 Jun 2019 19:17
Operator : DD\AJ
Sample : K3482-04
Misc :
ALS Vial : 13 Sample Multiplier: 1

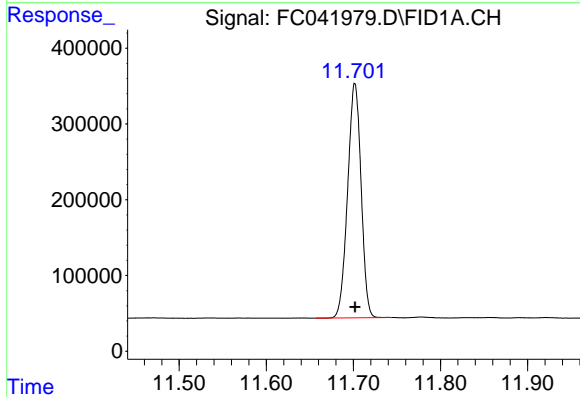
Integration File: autoint1.e
Quant Time: Jun 25 01:03:50 2019
Quant Method : Z:\pestpcbsrv\HPCHEM1\FID_C\Method\Alaphatic EPH 061219.M
Quant Title : GC Extractables
QLast Update : Thu Jun 13 07:03:58 2019
Response via : Initial Calibration
Integrator: ChemStation 6890 Scale Mode: Large solvent peaks clipped

Volume Inj. : 1 ul
Signal Phase : Rxi-1ms
Signal Info : 20M x 0.18mm x 0.18um

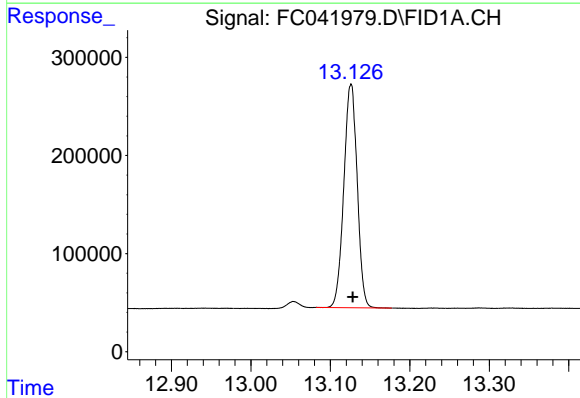




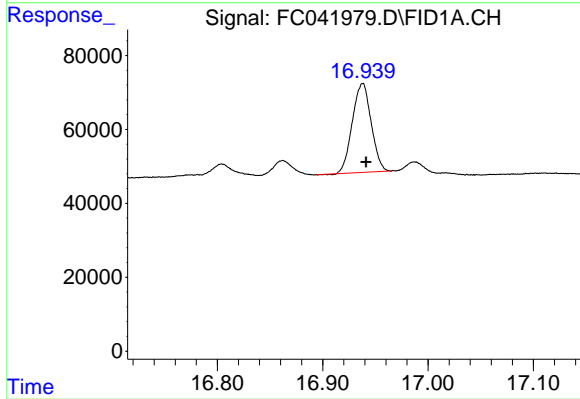
#6 n-Tetradecane (C14)
R.T.: 8.411 min
Delta R.T.: 0.062 min
Response: 438934
Conc: 3.63 ug/ml



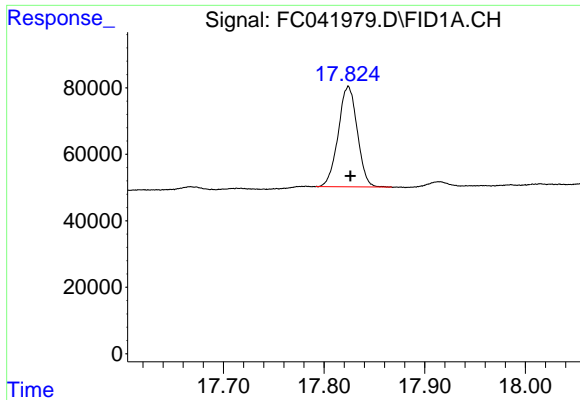
#9 ortho-Terphenyl (SURR)
R.T.: 11.702 min
Delta R.T.: 0.000 min
Response: 3318230
Conc: 24.94 ug/ml



#12 1-chlorooctadecane (SURR)
R.T.: 13.126 min
Delta R.T.: -0.002 min
Response: 2668752
Conc: 24.29 ug/ml

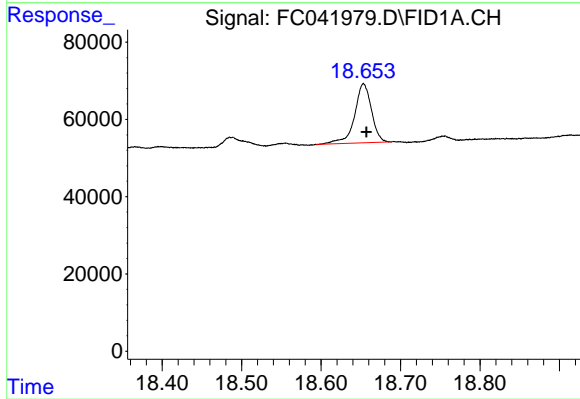


#16 n-Octacosane (C28)
R.T.: 16.938 min
Delta R.T.: -0.003 min
Response: 299157
Conc: 2.46 ug/ml



#17 n-Tricontane (C30)

R.T.: 17.824 min
Delta R.T.: -0.002 min
Response: 396604
Conc: 3.40 ug/ml



#18 n-Dotriacontane (C32)

R.T.: 18.653 min
Delta R.T.: -0.004 min
Response: 225398
Conc: 2.09 ug/ml