

Data Path : Z:\pestpcbsrv\HPCHEM1\FID_C\Data\FC062420AL\
 Data File : FC048050.D
 Signal(s) : FID1A.CH
 Acq On : 24 Jun 2020 20:37
 Operator : DD\AJ
 Sample : L3071-04
 Misc :
 ALS Vial : 16 Sample Multiplier: 1

Instrument :
 FID_C
 ClientSampleId :
 SB-B

Integration File: autoint1.e
 Quant Time: Jun 25 01:55:51 2020
 Quant Method : Z:\pestpcbsrv\HPCHEM1\FID_C\Method\Alaphatic EPH 060920.M
 Quant Title : GC Extractables
 QLast Update : Wed Jun 10 08:39:57 2020
 Response via : Initial Calibration
 Integrator: ChemStation 6890 Scale Mode: Large solvent peaks clipped

Volume Inj. : 1 ul
 Signal Phase : Rxi-1ms
 Signal Info : 20M x 0.18mm x 0.18um

Compound	R.T.	Response	Conc Units
System Monitoring Compounds			
12) S 1-chlorooctadecane (S...	13.136	1987703	20.296 ug/ml
Spiked Amount 50.000		Recovery =	40.59%
Target Compounds			
1) T n-Nonane (C9)	3.537	2645891	26.440 ug/ml
2) T n-Decane (C10)	4.600	1540760	15.335 ug/ml
3) T A~Naphthalene (C11.7)	6.216	395102	3.916 ug/ml
4) T n-Dodecane (C12)	6.598	944414	9.022 ug/ml
5) T A~2-methylnaphthalene...	7.250	190311	1.839 ug/ml
6) T n-Tetradecane (C14)	8.374	607169	5.785 ug/ml
7) T n-Hexadecane (C16)	9.961	606736	5.807 ug/ml
8) T n-Octadecane (C18)	11.391	470635	4.234 ug/ml
10) T n-Eicosane (C20)	12.690	289414	2.543 ug/ml
11) T n-Heneicosane (C21)	13.298	167461	1.463 ug/ml
13) T n-Docosane (C22)	13.881	121805	1.062 ug/ml

(f)=RT Delta > 1/2 Window

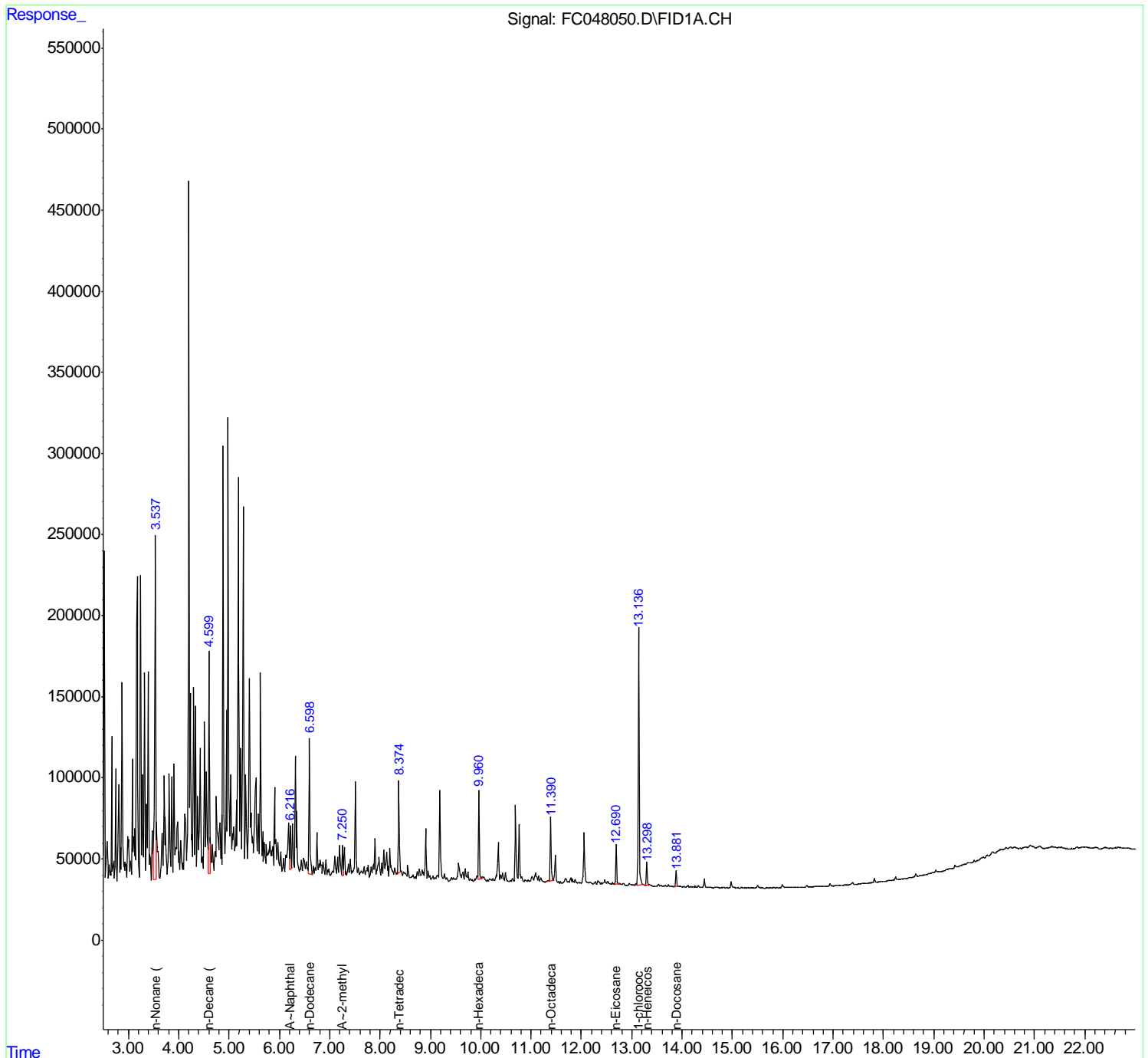
(m)=manual int.

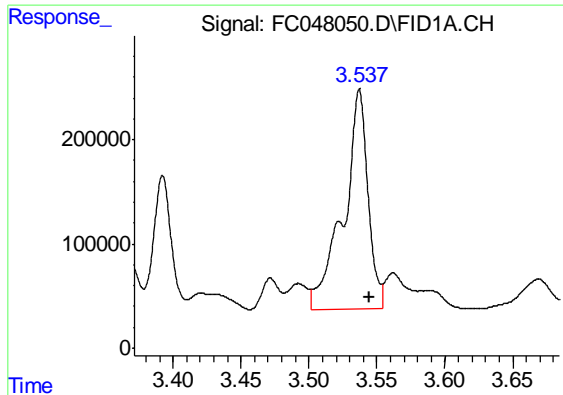
Data Path : Z:\pestpcbsrv\HPCHEM1\FID_C\Data\FC062420AL\
Data File : FC048050.D
Signal(s) : FID1A.CH
Acq On : 24 Jun 2020 20:37
Operator : DD\AJ
Sample : L3071-04
Misc :
ALS Vial : 16 Sample Multiplier: 1

Instrument :
FID_C
ClientSampled :
SB-B

Integration File: autoint1.e
Quant Time: Jun 25 01:55:51 2020
Quant Method : Z:\pestpcbsrv\HPCHEM1\FID_C\Method\Aliphatic EPH 060920.M
Quant Title : GC Extractables
QLast Update : Wed Jun 10 08:39:57 2020
Response via : Initial Calibration
Integrator: ChemStation 6890 Scale Mode: Large solvent peaks clipped

Volume Inj. : 1 ul
Signal Phase : Rxi-1ms
Signal Info : 20M x 0.18mm x 0.18um

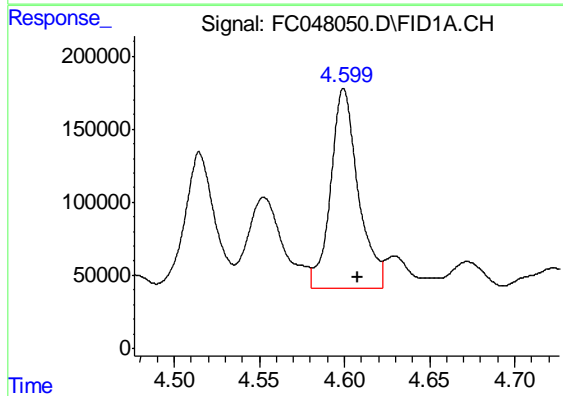




#1 n-Nonane (C9)

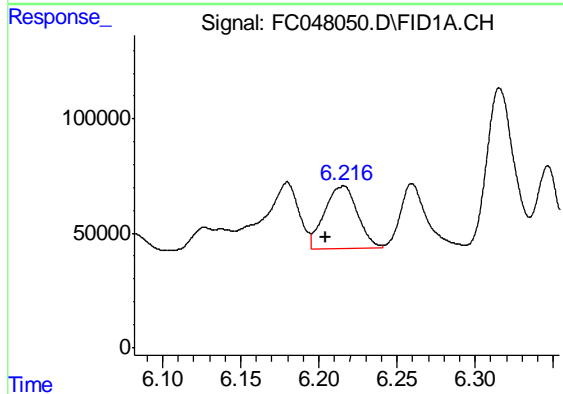
R.T.: 3.537 min
Delta R.T.: -0.007 min
Response: 2645891
Conc: 26.44 ug/ml

Instrument :
FID_C
ClientSampled :
SB-B



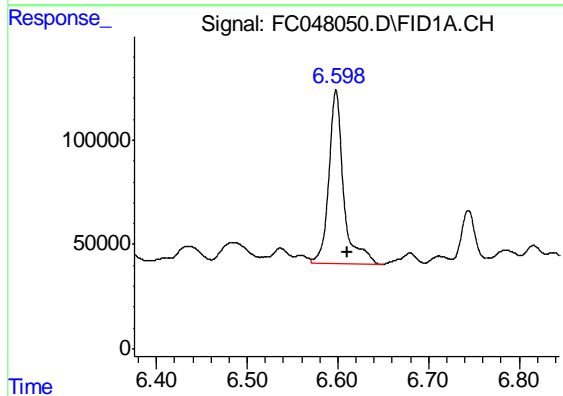
#2 n-Decane (C10)

R.T.: 4.600 min
Delta R.T.: -0.009 min
Response: 1540760
Conc: 15.33 ug/ml



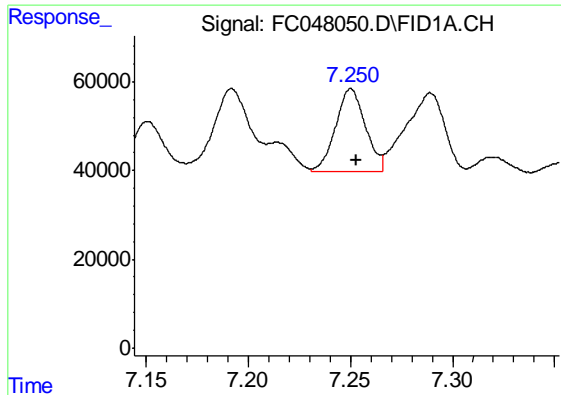
#3 A-Naphthalene (C11.7)

R.T.: 6.216 min
Delta R.T.: 0.011 min
Response: 395102
Conc: 3.92 ug/ml



#4 n-Dodecane (C12)

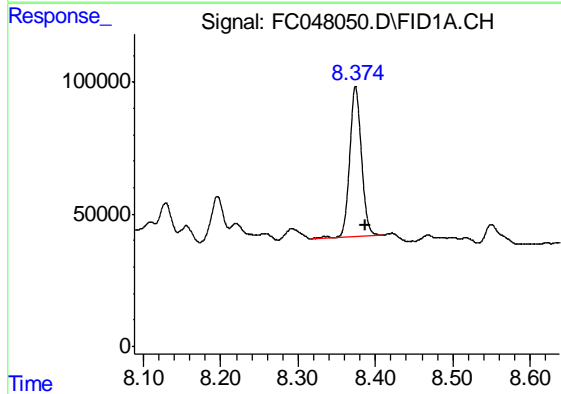
R.T.: 6.598 min
Delta R.T.: -0.012 min
Response: 944414
Conc: 9.02 ug/ml



#5 A~2-methylnaphthalene (C12.89)

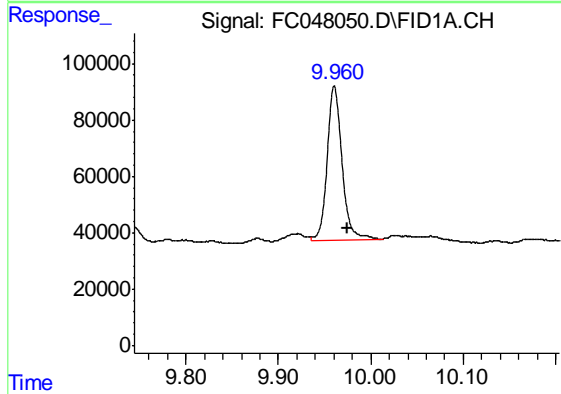
R.T.: 7.250 min
 Delta R.T.: -0.002 min
 Response: 190311
 Conc: 1.84 ug/ml

Instrument :
 FID_C
 ClientSampled :
 SB-B



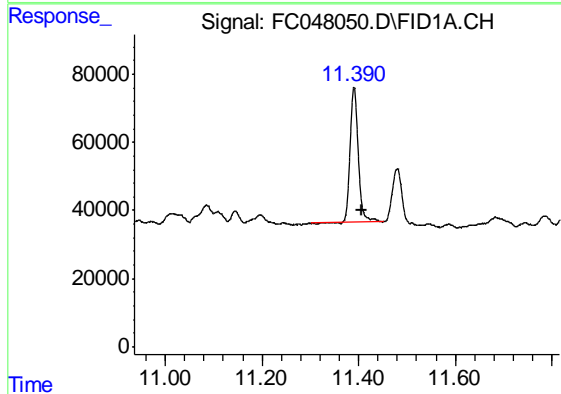
#6 n-Tetradecane (C14)

R.T.: 8.374 min
 Delta R.T.: -0.013 min
 Response: 607169
 Conc: 5.79 ug/ml



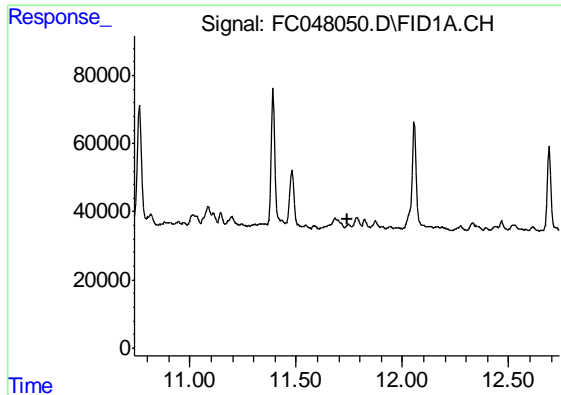
#7 n-Hexadecane (C16)

R.T.: 9.961 min
 Delta R.T.: -0.014 min
 Response: 606736
 Conc: 5.81 ug/ml



#8 n-Octadecane (C18)

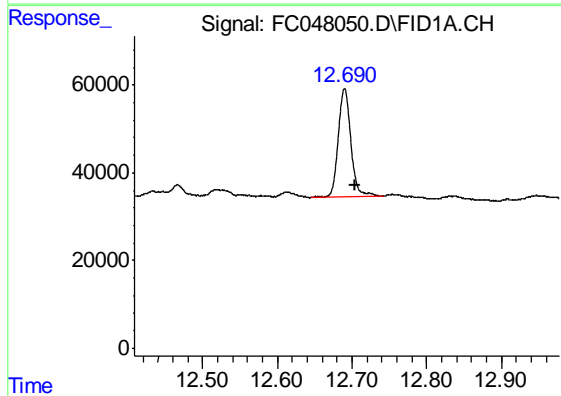
R.T.: 11.391 min
 Delta R.T.: -0.015 min
 Response: 470635
 Conc: 4.23 ug/ml



#9 ortho-Terphenyl (SURR)

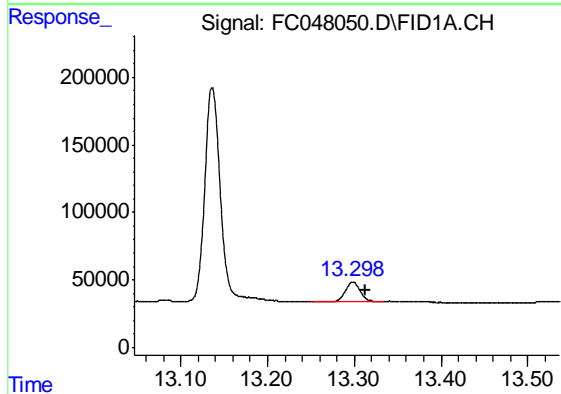
R.T.: 0.000 min
 Exp R.T. : 11.739 min
 Response: 0
 Conc: N.D.

Instrument :
 FID_C
 ClientSampleId :
 SB-B



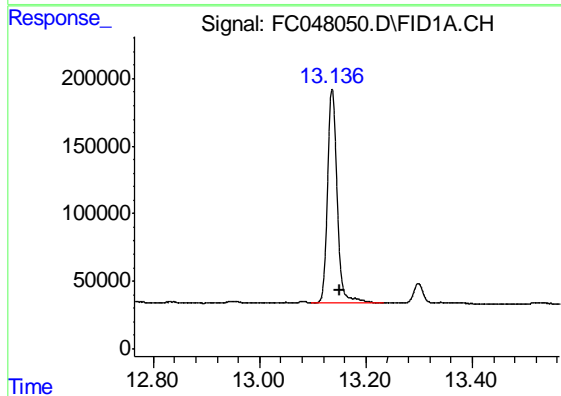
#10 n-Eicosane (C20)

R.T.: 12.690 min
 Delta R.T.: -0.015 min
 Response: 289414
 Conc: 2.54 ug/ml



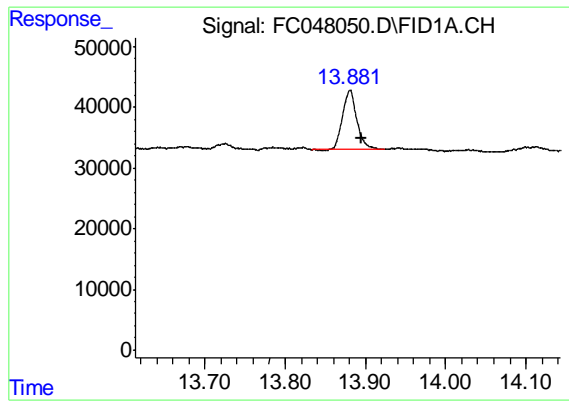
#11 n-Heneicosane (C21)

R.T.: 13.298 min
 Delta R.T.: -0.014 min
 Response: 167461
 Conc: 1.46 ug/ml



#12 1-chlorooctadecane (SURR)

R.T.: 13.136 min
 Delta R.T.: -0.014 min
 Response: 1987703
 Conc: 20.30 ug/ml



#13 n-Docosane (C22)

R.T.: 13.881 min
Delta R.T.: -0.014 min
Response: 121805
Conc: 1.06 ug/ml

Instrument :
FID_C
ClientSampled :
SB-B