

Data Path : Z:\pestpcbsrv\HPCHEM1\FID\_C\Data\FC062518AL\  
 Data File : FC034932.D  
 Signal(s) : FID1A.CH  
 Acq On : 25 Jun 2018 12:45  
 Operator : UA/AJ  
 Sample : 20 PPM ALIPHATIC HC STD  
 Misc :  
 ALS Vial : 4 Sample Multiplier: 1

Integration File: autoint1.e  
 Quant Time: Jun 25 13:53:54 2018  
 Quant Method : Z:\PESTPCBSRV\HPCHEM1\FID\_C\Method\Aliphatic EPH 062518.M  
 Quant Title : GC Extractables  
 QLast Update : Mon Jun 25 13:54:03 2018  
 Response via : Initial Calibration  
 Integrator: ChemStation 6890 Scale Mode: Large solvent peaks clipped

Volume Inj. : 1 ul  
 Signal Phase : Rxi-lms  
 Signal Info : 20M x 0.18mm x 0.18um

Compound	R.T.	Response	Conc Units
-----			
System Monitoring Compounds			
9) S ortho-Terphenyl (SURR)	11.459	2025805	20.000 ug/ml
Spiked Amount	50.000	Recovery	= 40.00%
12) S 1-chlorooctadecane (S...	12.899	1572440	20.000 ug/ml
Spiked Amount	50.000	Recovery	= 40.00%
Target Compounds			
1) T n-Nonane (C9)	3.245	1730221	20.000 ug/ml
2) T n-Decane (C10)	4.314	1722437	20.000 ug/ml
3) T A-Naphthalene (C11.7)	5.891	1948530	20.000 ug/ml
4) T n-Dodecane (C12)	6.330	1749748	20.000 ug/ml
5) T A-2-methylnaphthalene...	6.944	1963687	20.000 ug/ml
6) T n-Tetradecane (C14)	8.118	1788643	20.000 ug/ml
7) T n-Hexadecane (C16)	9.713	1810061	20.000 ug/ml
8) T n-Octadecane (C18)	11.151	1876155	20.000 ug/ml
10) T n-Eicosane (C20)	12.457	1887629	20.000 ug/ml
11) T n-Heneicosane (C21)	13.068	1859956	20.000 ug/ml
13) T n-Docosane (C22)	13.652	1872470	20.000 ug/ml
14) T n-Tetracosane (C24)	14.754	1878312	20.000 ug/ml
15) T n-Hexacosane (C26)	15.773	1864195	20.000 ug/ml
16) T n-Octacosane (C28)	16.721	1866548	20.000 ug/ml
17) T n-Tricontane (C30)	17.607	1823243	20.000 ug/ml
18) T n-Dotriacontane (C32)	18.436	1771029	20.000 ug/ml
19) T n-Tetratriacontane (C34)	19.220	1804599	20.000 ug/ml
20) T n-Hexatriacontane (C36)	19.958	1793390	20.000 ug/ml
21) T n-Octatriacontane (C38)	20.678	1808413	20.000 ug/ml
22) T n-Tetracontane (C40)	21.548	1875047	20.000 ug/ml
-----			

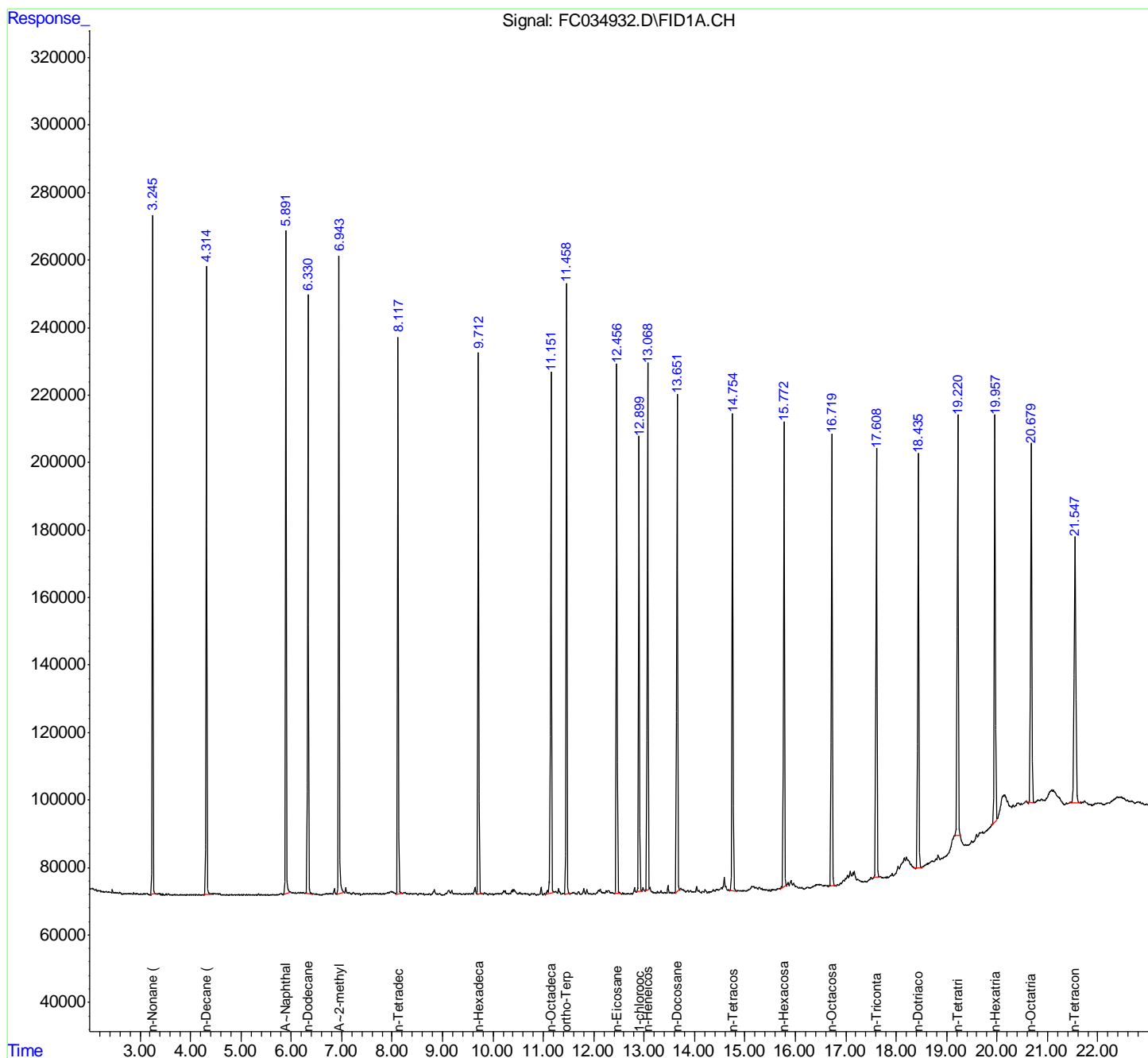
(f)=RT Delta > 1/2 Window

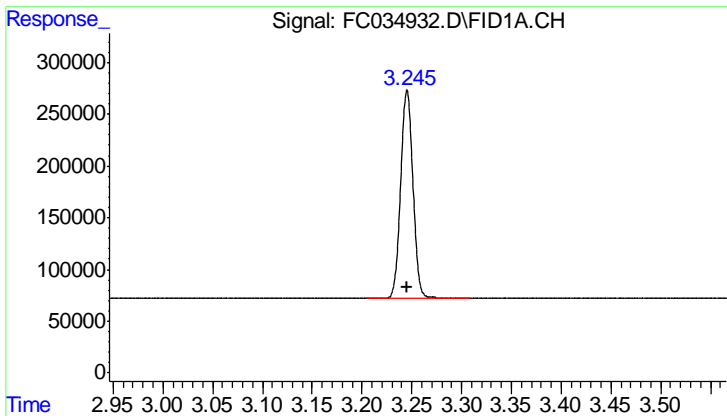
(m)=manual int.

Data Path : Z:\pestpcbsrv\HPCHEM1\FID\_C\Data\FC062518AL\  
 Data File : FC034932.D  
 Signal(s) : FID1A.CH  
 Acq On : 25 Jun 2018 12:45  
 Operator : UA/AJ  
 Sample : 20 PPM ALIPHATIC HC STD  
 Misc :  
 ALS Vial : 4 Sample Multiplier: 1

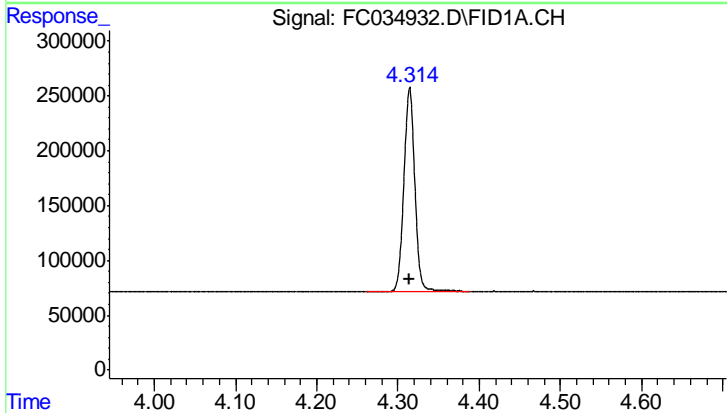
Integration File: autoint1.e  
 Quant Time: Jun 25 13:53:54 2018  
 Quant Method : Z:\PESTPCBSRV\HPCHEM1\FID\_C\Method\Alaphatic EPH 062518.M  
 Quant Title : GC Extractables  
 QLast Update : Mon Jun 25 13:54:03 2018  
 Response via : Initial Calibration  
 Integrator: ChemStation 6890 Scale Mode: Large solvent peaks clipped

Volume Inj. : 1 ul  
 Signal Phase : Rxi-lms  
 Signal Info : 20M x 0.18mm x 0.18um

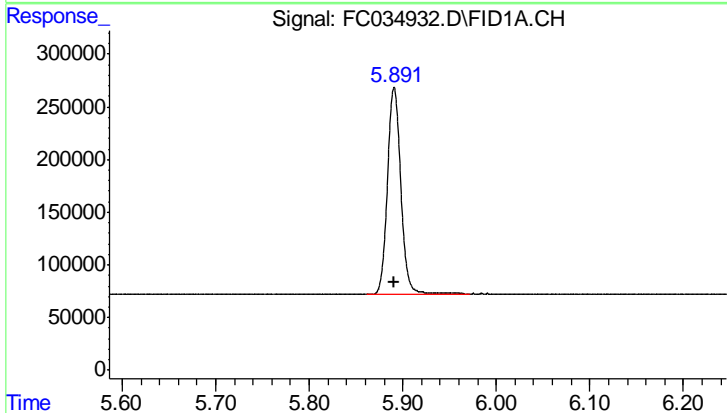




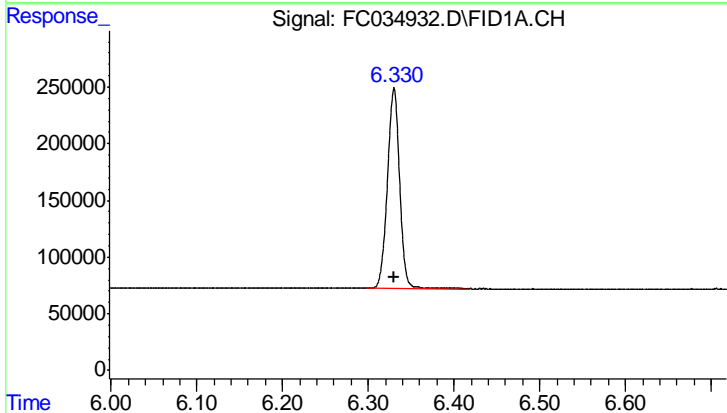
#1 n-Nonane (C9)  
R.T.: 3.245 min  
Delta R.T.: 0.000 min  
Response: 1730221  
Conc: 20.00 ug/ml



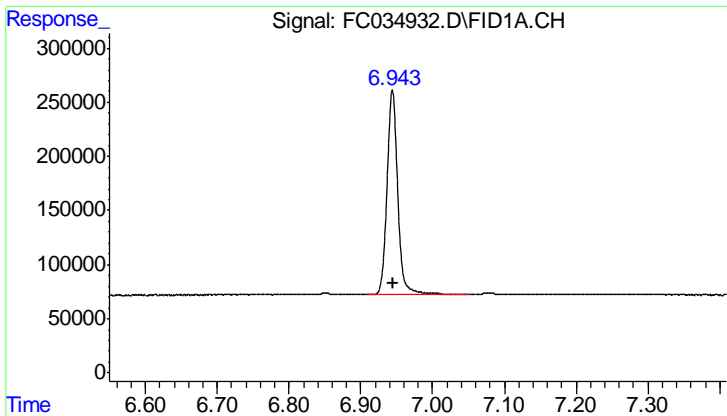
#2 n-Decane (C10)  
R.T.: 4.314 min  
Delta R.T.: 0.000 min  
Response: 1722437  
Conc: 20.00 ug/ml



#3 A~Naphthalene (C11.7)  
R.T.: 5.891 min  
Delta R.T.: 0.000 min  
Response: 1948530  
Conc: 20.00 ug/ml

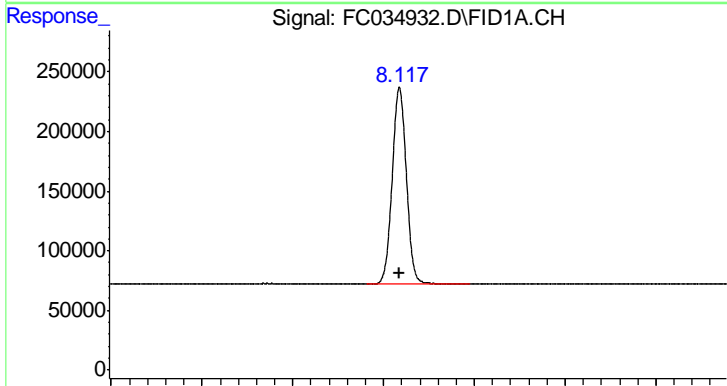


#4 n-Dodecane (C12)  
R.T.: 6.330 min  
Delta R.T.: 0.000 min  
Response: 1749748  
Conc: 20.00 ug/ml



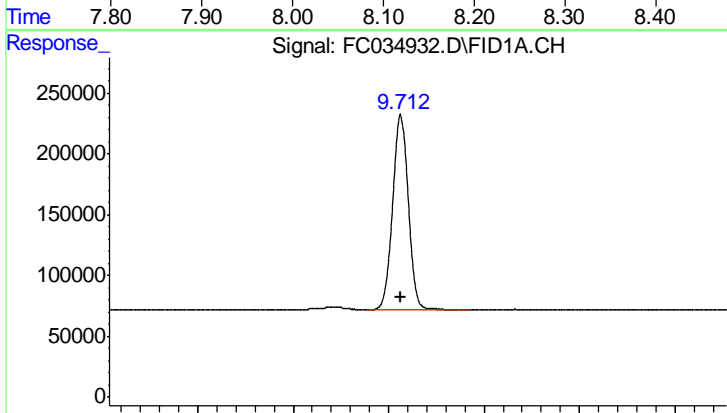
#5 A~2-methylnaphthalene (C12.89)

R.T.: 6.944 min  
Delta R.T.: 0.000 min  
Response: 1963687  
Conc: 20.00 ug/ml



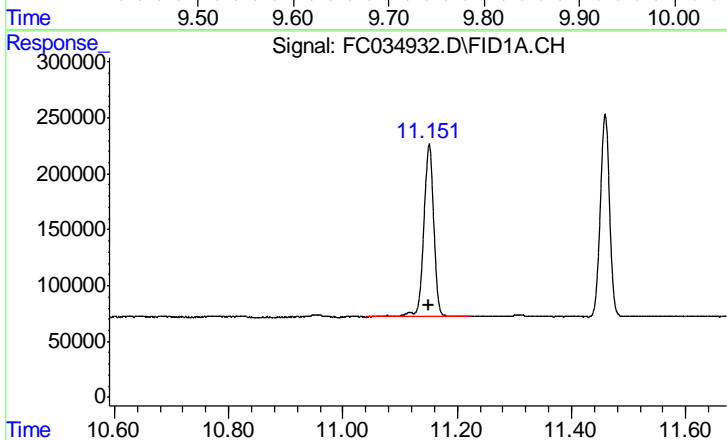
#6 n-Tetradecane (C14)

R.T.: 8.118 min  
Delta R.T.: 0.000 min  
Response: 1788643  
Conc: 20.00 ug/ml



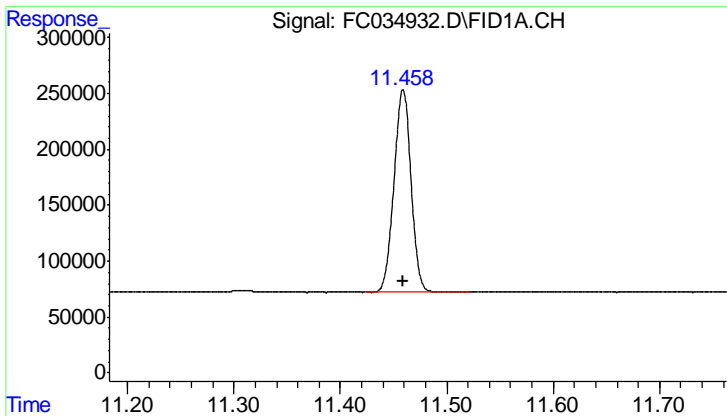
#7 n-Hexadecane (C16)

R.T.: 9.713 min  
Delta R.T.: 0.000 min  
Response: 1810061  
Conc: 20.00 ug/ml



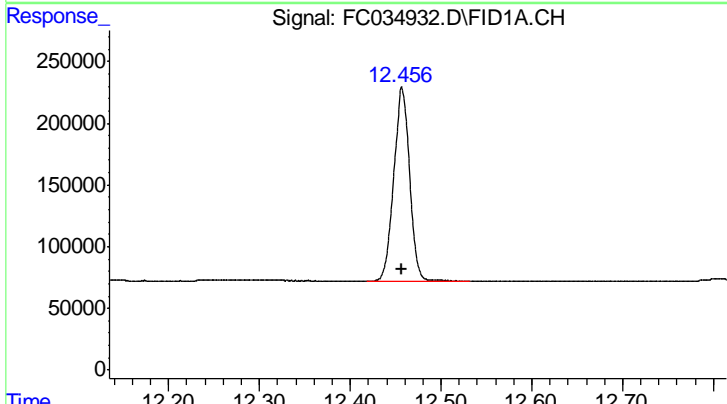
#8 n-Octadecane (C18)

R.T.: 11.151 min  
Delta R.T.: 0.000 min  
Response: 1876155  
Conc: 20.00 ug/ml



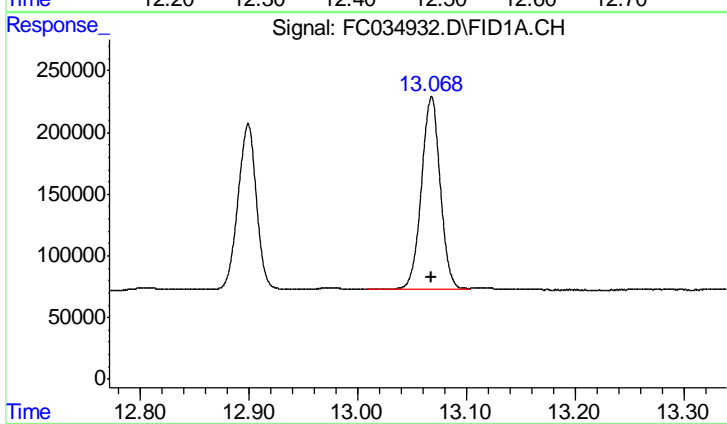
#9 ortho-Terphenyl (SURR)

R.T.: 11.459 min  
 Delta R.T.: 0.000 min  
 Response: 2025805  
 Conc: 20.00 ug/ml



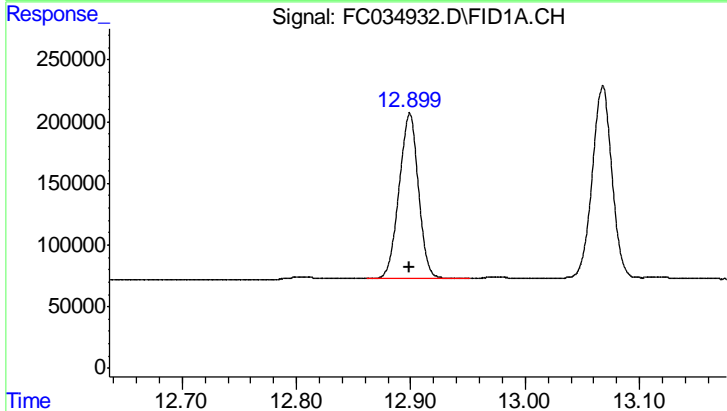
#10 n-Eicosane (C20)

R.T.: 12.457 min  
 Delta R.T.: 0.000 min  
 Response: 1887629  
 Conc: 20.00 ug/ml



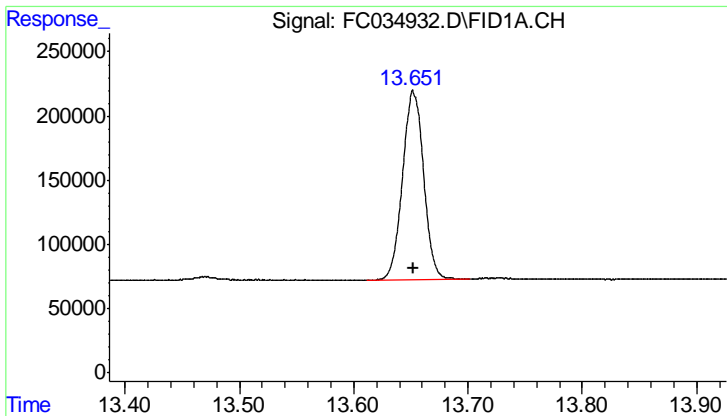
#11 n-Heneicosane (C21)

R.T.: 13.068 min  
 Delta R.T.: 0.000 min  
 Response: 1859956  
 Conc: 20.00 ug/ml

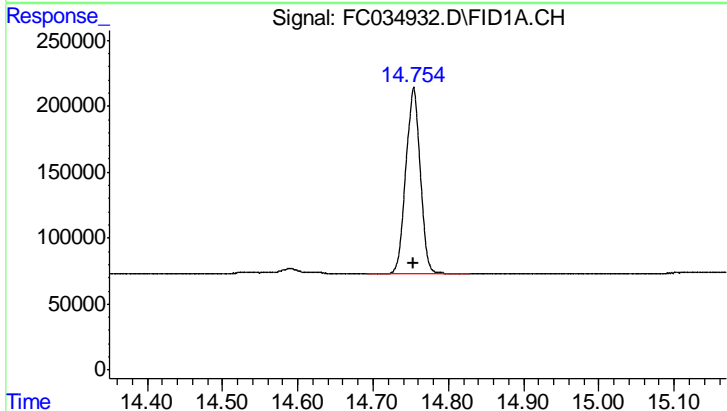


#12 1-chlorooctadecane (SURR)

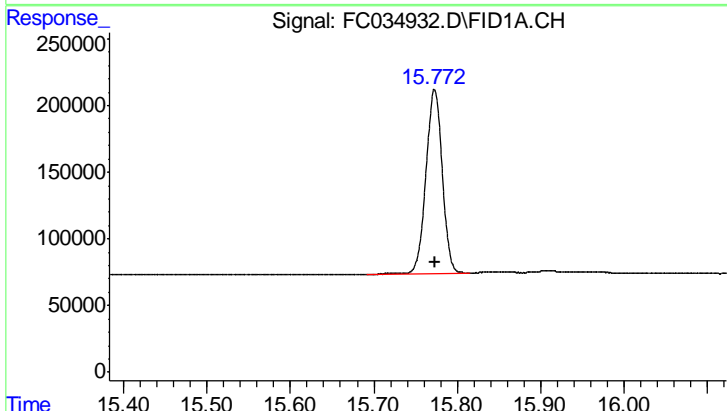
R.T.: 12.899 min  
 Delta R.T.: 0.000 min  
 Response: 1572440  
 Conc: 20.00 ug/ml



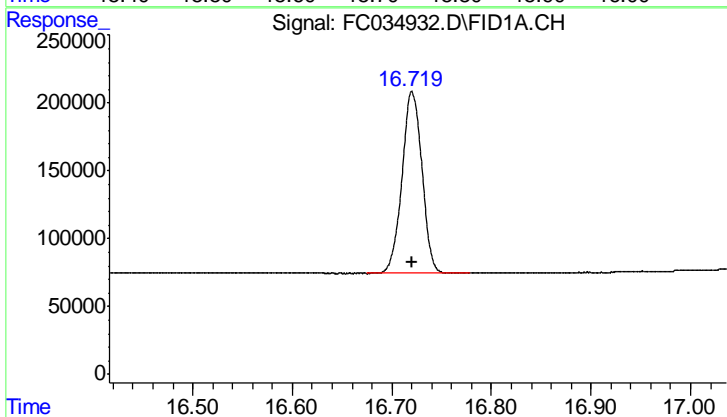
#13 n-Docosane (C22)  
R.T.: 13.652 min  
Delta R.T.: 0.000 min  
Response: 1872470  
Conc: 20.00 ug/ml



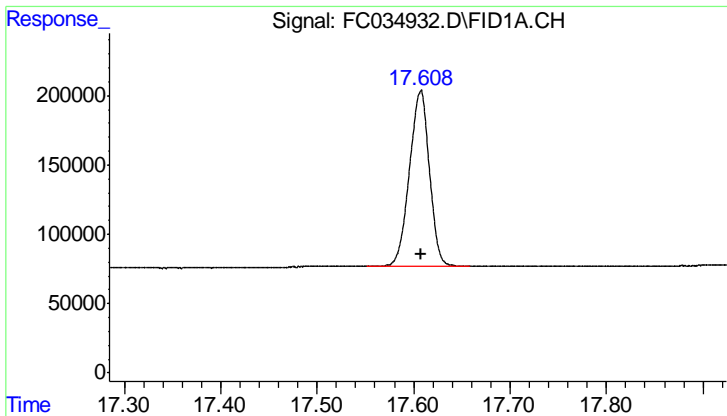
#14 n-Tetracosane (C24)  
R.T.: 14.754 min  
Delta R.T.: 0.000 min  
Response: 1878312  
Conc: 20.00 ug/ml



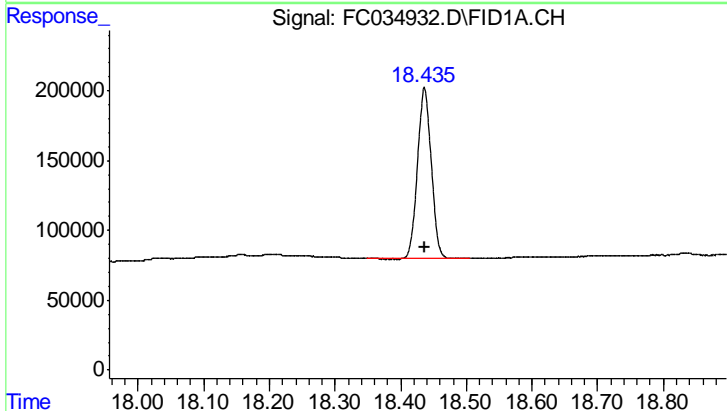
#15 n-Hexacosane (C26)  
R.T.: 15.773 min  
Delta R.T.: 0.000 min  
Response: 1864195  
Conc: 20.00 ug/ml



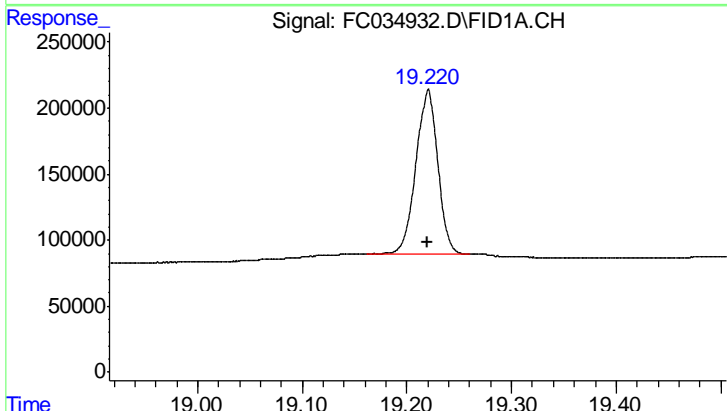
#16 n-Octacosane (C28)  
R.T.: 16.721 min  
Delta R.T.: 0.000 min  
Response: 1866548  
Conc: 20.00 ug/ml



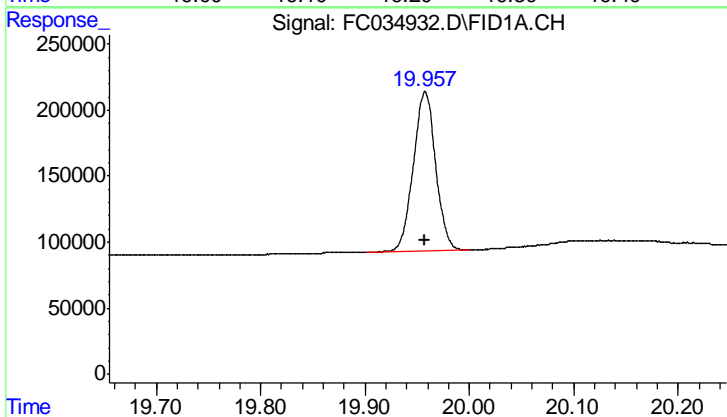
#17 n-Tricontane (C30)  
R.T.: 17.607 min  
Delta R.T.: 0.000 min  
Response: 1823243  
Conc: 20.00 ug/ml



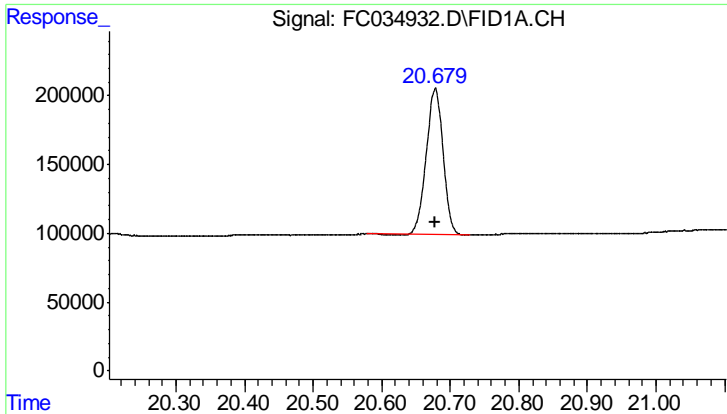
#18 n-Dotriacontane (C32)  
R.T.: 18.436 min  
Delta R.T.: 0.000 min  
Response: 1771029  
Conc: 20.00 ug/ml



#19 n-Tetratriacontane (C34)  
R.T.: 19.220 min  
Delta R.T.: 0.000 min  
Response: 1804599  
Conc: 20.00 ug/ml

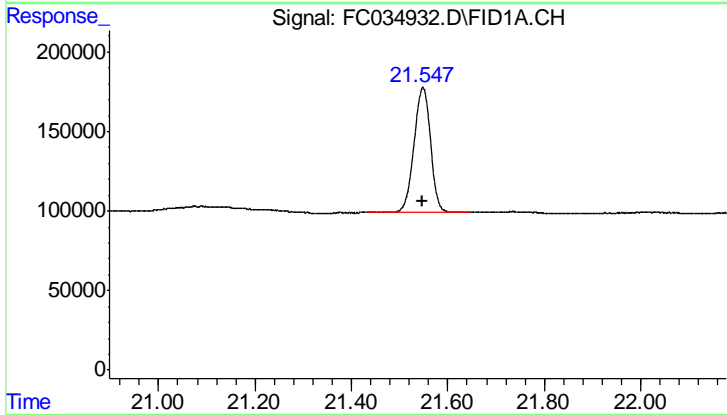


#20 n-Hexatriacontane (C36)  
R.T.: 19.958 min  
Delta R.T.: 0.000 min  
Response: 1793390  
Conc: 20.00 ug/ml



#21 n-Octatriacontane (C38)

R.T.: 20.678 min  
Delta R.T.: 0.000 min  
Response: 1808413  
Conc: 20.00 ug/ml



#22 n-Tetracontane (C40)

R.T.: 21.548 min  
Delta R.T.: 0.000 min  
Response: 1875047  
Conc: 20.00 ug/ml