

Data Path : Z:\pestpcbsrv\HPCHEM1\FID\_C\Data\FC062521AL\  
 Data File : FC054458.D  
 Signal(s) : FID1A.CH  
 Acq On : 26 Jun 2021 4:20  
 Operator : DD\AJ  
 Sample : M2832-03DL 5X  
 Misc :  
 ALS Vial : 18 Sample Multiplier: 1

Instrument :  
 FID\_C  
 ClientSampleId :

Integration File: autoint1.e  
 Quant Time: Jun 26 06:30:16 2021  
 Quant Method : Z:\pestpcbsrv\HPCHEM1\FID\_C\Method\Alaphatic EPH 062521.M  
 Quant Title : GC Extractables  
 QLast Update : Sat Jun 26 02:10:35 2021  
 Response via : Initial Calibration  
 Integrator: ChemStation 6890 Scale Mode: Large solvent peaks clipped

Volume Inj. : 1 ul  
 Signal Phase : Rxi-1ms  
 Signal Info : 20M x 0.18mm x 0.18um

Compound	R.T.	Response	Conc Units
-----			
System Monitoring Compounds			
9) S ortho-Terphenyl (SURR)	11.329	1154644	8.156 ug/ml
Spiked Amount	50.000	Recovery	= 16.31%
12) S 1-chlorooctadecane (S...	12.773	892016	8.002 ug/ml
Spiked Amount	50.000	Recovery	= 16.00%

Target Compounds

(f)=RT Delta > 1/2 Window

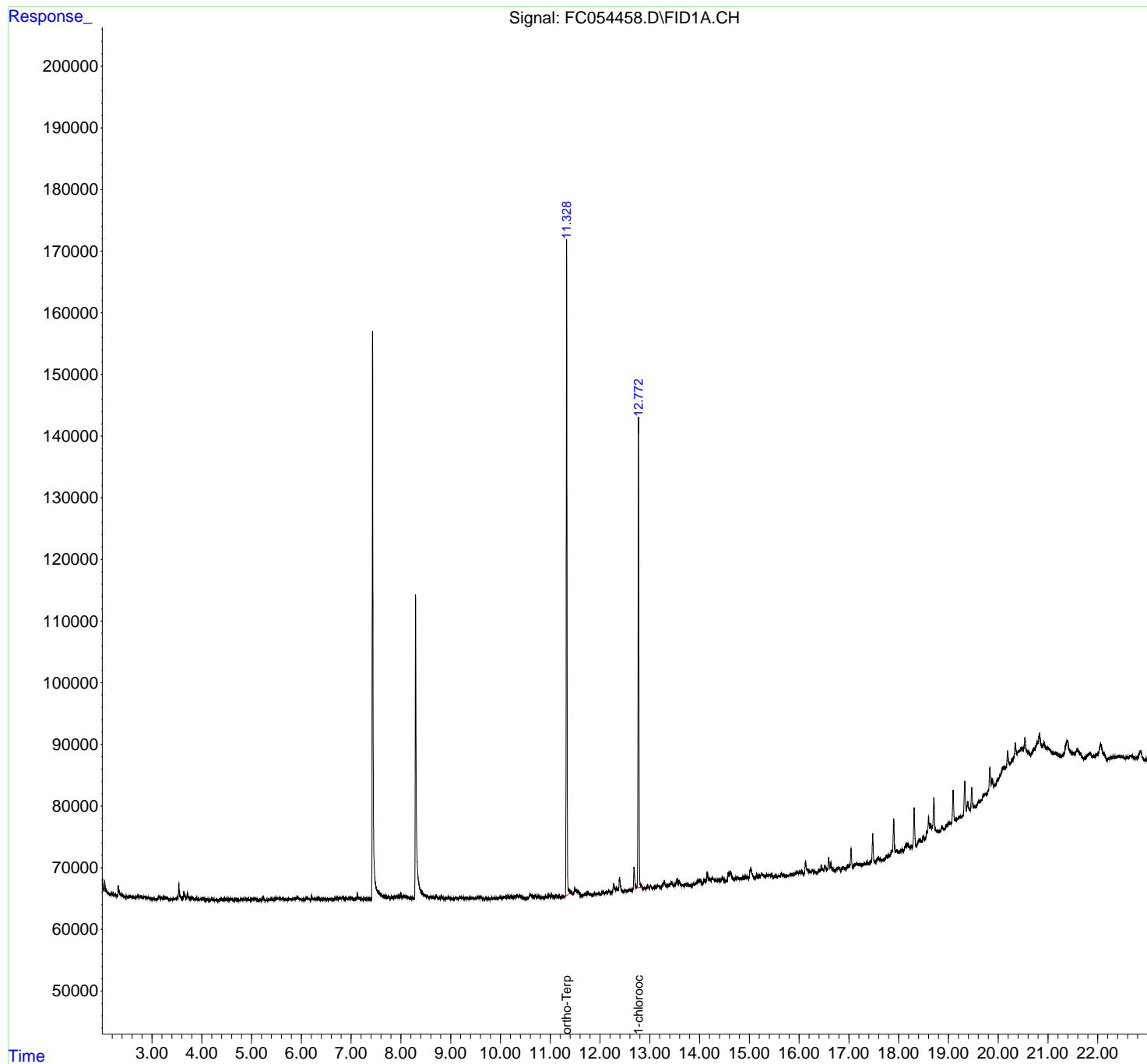
(m)=manual int.

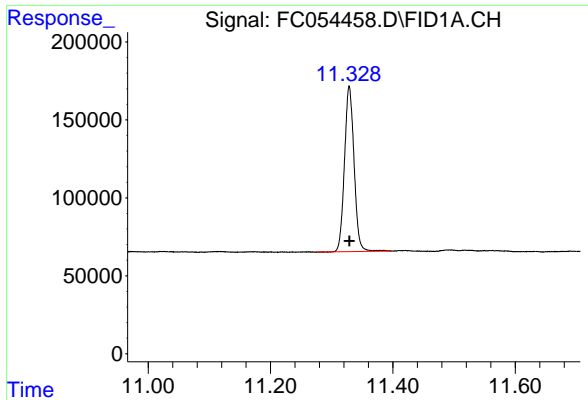
Data Path : Z:\pestpcbsrv\HPCHEM1\FID\_C\Data\FC062521AL\  
Data File : FC054458.D  
Signal(s) : FID1A.CH  
Acq On : 26 Jun 2021 4:20  
Operator : DD\AJ  
Sample : M2832-03DL 5X  
Misc :  
ALS Vial : 18 Sample Multiplier: 1

Instrument :  
FID\_C  
ClientSampled :

Integration File: autoint1.e  
Quant Time: Jun 26 06:30:16 2021  
Quant Method : Z:\pestpcbsrv\HPCHEM1\FID\_C\Method\Alaphatic EPH 062521.M  
Quant Title : GC Extractables  
QLast Update : Sat Jun 26 02:10:35 2021  
Response via : Initial Calibration  
Integrator: ChemStation 6890 Scale Mode: Large solvent peaks clipped

Volume Inj. : 1 ul  
Signal Phase : Rxi-1ms  
Signal Info : 20M x 0.18mm x 0.18um

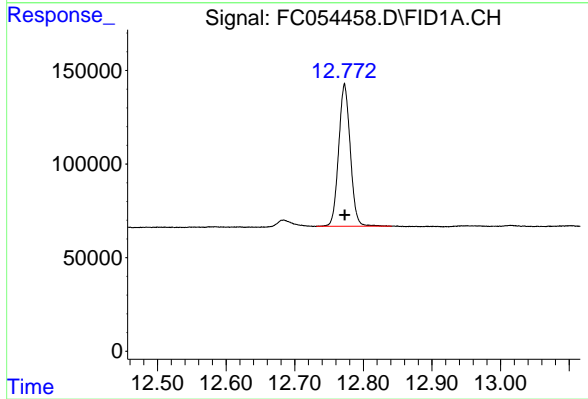




#9 ortho-Terphenyl (SURR)

R.T.: 11.329 min  
Delta R.T.: 0.000 min  
Response: 1154644  
Conc: 8.16 ug/ml

Instrument :  
FID\_C  
ClientSampleId :



#12 1-chlorooctadecane (SURR)

R.T.: 12.773 min  
Delta R.T.: 0.000 min  
Response: 892016  
Conc: 8.00 ug/ml