

Data Path : Z:\pestpcbsrv\HPCHEM1\FID_C\Data\FC062620AL\
 Data File : FC048115.D
 Signal(s) : FID1A.CH
 Acq On : 26 Jun 2020 20:29
 Operator : DD\AJ
 Sample : L3126-02
 Misc :
 ALS Vial : 15 Sample Multiplier: 1

Instrument :
 FID_C
 ClientSampleId :
 TP-8-S2

Integration File: autoint1.e
 Quant Time: Jun 27 01:09:32 2020
 Quant Method : Z:\pestpcbsrv\HPCHEM1\FID_C\Method\Alaphatic EPH 060920.M
 Quant Title : GC Extractables
 QLast Update : Wed Jun 10 08:39:57 2020
 Response via : Initial Calibration
 Integrator: ChemStation 6890 Scale Mode: Large solvent peaks clipped

Volume Inj. : 1 ul
 Signal Phase : Rxi-1ms
 Signal Info : 20M x 0.18mm x 0.18um

Compound	R.T.	Response	Conc Units

System Monitoring Compounds			
9) S ortho-Terphenyl (SURR)	11.722	4673202	38.958 ug/ml
Spiked Amount	50.000	Recovery =	77.92%
12) S 1-chlorooctadecane (S...	13.133	3764785	38.442 ug/ml
Spiked Amount	50.000	Recovery =	76.88%

Target Compounds

(f)=RT Delta > 1/2 Window

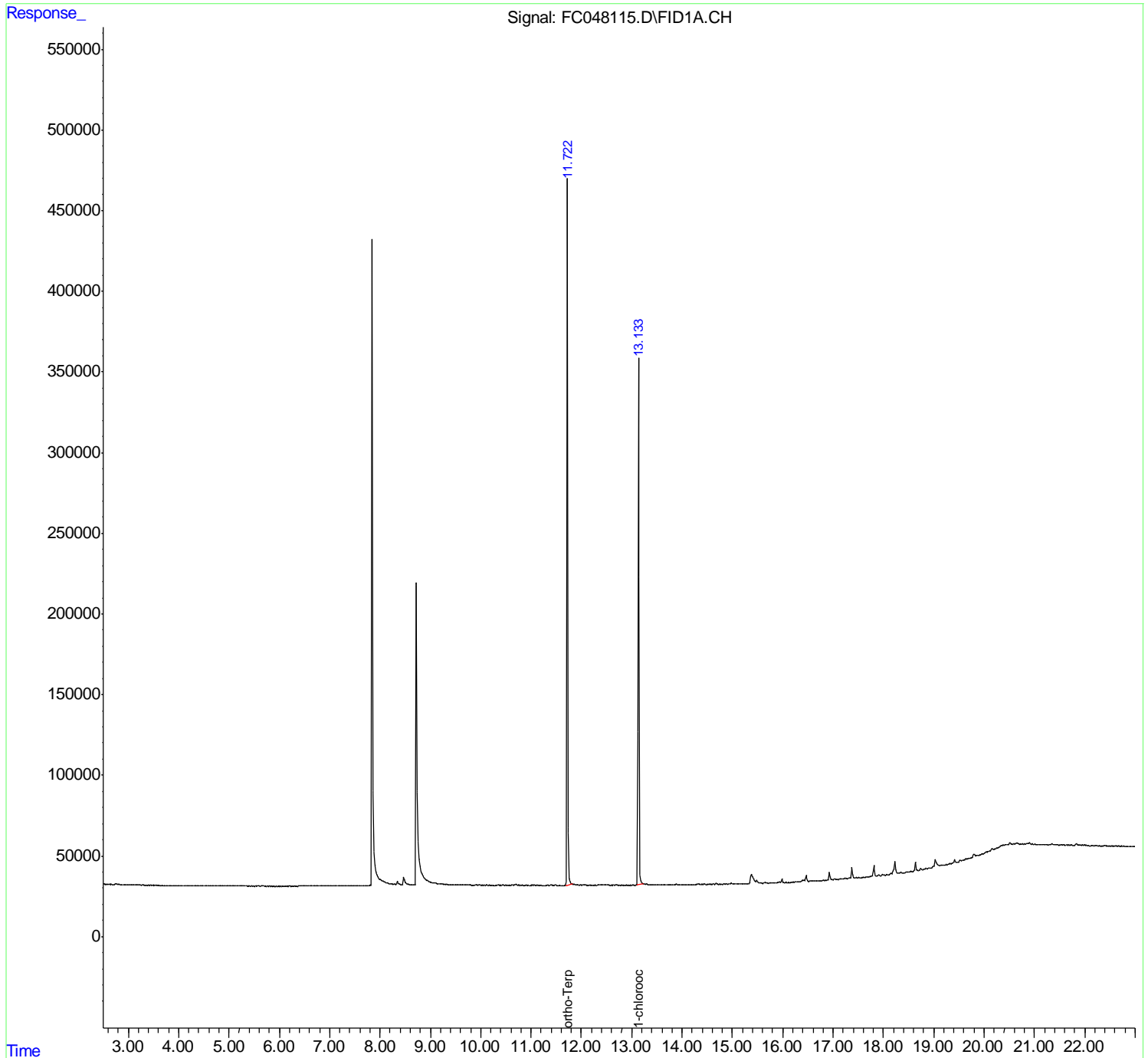
(m)=manual int.

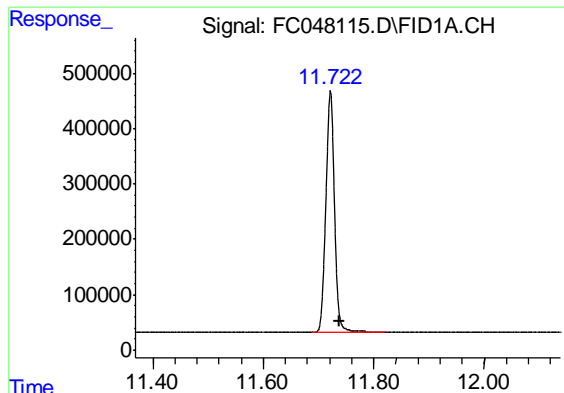
Data Path : Z:\pestpcbsrv\HPCHEM1\FID_C\Data\FC062620AL\
 Data File : FC048115.D
 Signal(s) : FID1A.CH
 Acq On : 26 Jun 2020 20:29
 Operator : DD\AJ
 Sample : L3126-02
 Misc :
 ALS Vial : 15 Sample Multiplier: 1

Instrument :
 FID_C
 ClientSampled :
 TP-8-S2

Integration File: autoint1.e
 Quant Time: Jun 27 01:09:32 2020
 Quant Method : Z:\pestpcbsrv\HPCHEM1\FID_C\Method\Aliphatic EPH 060920.M
 Quant Title : GC Extractables
 QLast Update : Wed Jun 10 08:39:57 2020
 Response via : Initial Calibration
 Integrator: ChemStation 6890 Scale Mode: Large solvent peaks clipped

Volume Inj. : 1 ul
 Signal Phase : Rxi-1ms
 Signal Info : 20M x 0.18mm x 0.18um

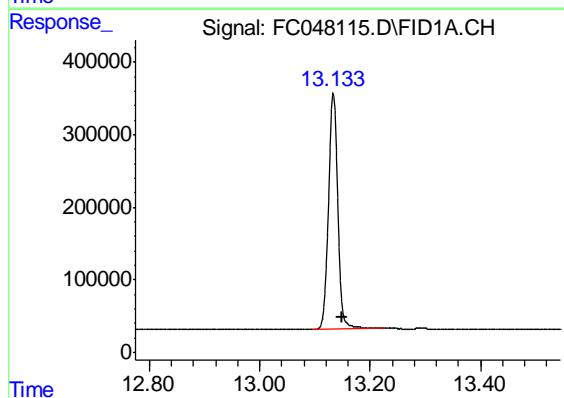




#9 ortho-Terphenyl (SURR)

R.T.: 11.722 min
Delta R.T.: -0.017 min
Response: 4673202
Conc: 38.96 ug/ml

Instrument :
FID_C
ClientSampleId :
TP-8-S2



#12 1-chlorooctadecane (SURR)

R.T.: 13.133 min
Delta R.T.: -0.017 min
Response: 3764785
Conc: 38.44 ug/ml