

Data Path : Z:\pestpcbsrv\HPCHEM1\FID_C\Data\FC062620AL\
 Data File : FC048124.D
 Signal(s) : FID1A.CH
 Acq On : 27 Jun 2020 1:56
 Operator : DD\AJ
 Sample : L3126-01DL 2X
 Misc :
 ALS Vial : 22 Sample Multiplier: 1

Instrument :
 FID_C
 ClientSampleID :
 TP-8-S1DL

Integration File: autoint1.e
 Quant Time: Jun 27 04:07:07 2020
 Quant Method : Z:\pestpcbsrv\HPCHEM1\FID_C\Method\Alaphatic EPH 060920.M
 Quant Title : GC Extractables
 QLast Update : Wed Jun 10 08:39:57 2020
 Response via : Initial Calibration
 Integrator: ChemStation 6890 Scale Mode: Large solvent peaks clipped

Volume Inj. : 1 ul
 Signal Phase : Rxi-1ms
 Signal Info : 20M x 0.18mm x 0.18um

Compound	R.T.	Response	Conc Units
System Monitoring Compounds			
9) S ortho-Terphenyl (SURR)	11.720	2117898	17.656 ug/ml
Spiked Amount	50.000	Recovery =	35.31%
12) S 1-chlorooctadecane (S...	13.132	1690654	17.263 ug/ml
Spiked Amount	50.000	Recovery =	34.53%

Target Compounds

(f)=RT Delta > 1/2 Window

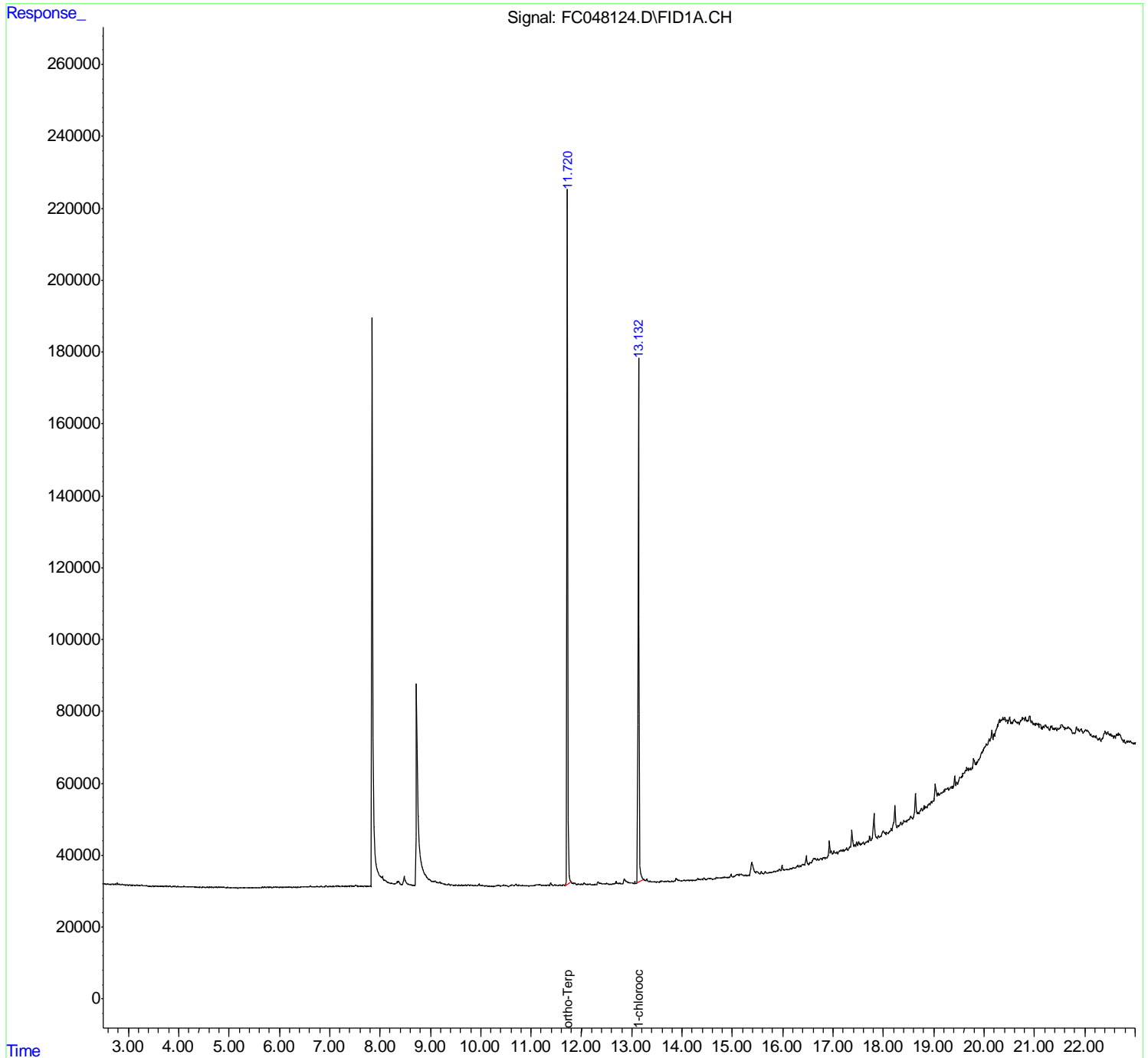
(m)=manual int.

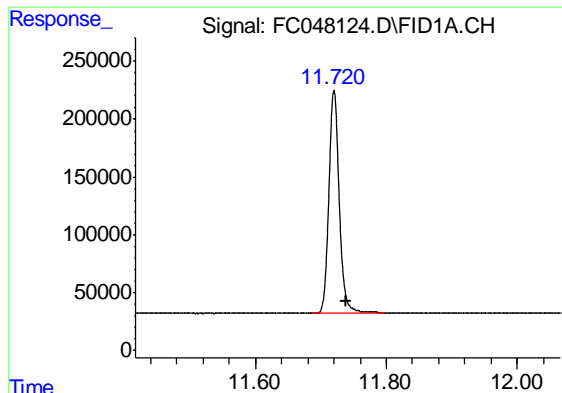
Data Path : Z:\pestpcbsrv\HPCHEM1\FID_C\Data\FC062620AL\
 Data File : FC048124.D
 Signal(s) : FID1A.CH
 Acq On : 27 Jun 2020 1:56
 Operator : DD\AJ
 Sample : L3126-01DL 2X
 Misc :
 ALS Vial : 22 Sample Multiplier: 1

Instrument :
 FID_C
 ClientSampled :
 TP-8-S1DL

Integration File: autoint1.e
 Quant Time: Jun 27 04:07:07 2020
 Quant Method : Z:\pestpcbsrv\HPCHEM1\FID_C\Method\Aliphatic EPH 060920.M
 Quant Title : GC Extractables
 QLast Update : Wed Jun 10 08:39:57 2020
 Response via : Initial Calibration
 Integrator: ChemStation 6890 Scale Mode: Large solvent peaks clipped

Volume Inj. : 1 ul
 Signal Phase : Rxi-1ms
 Signal Info : 20M x 0.18mm x 0.18um

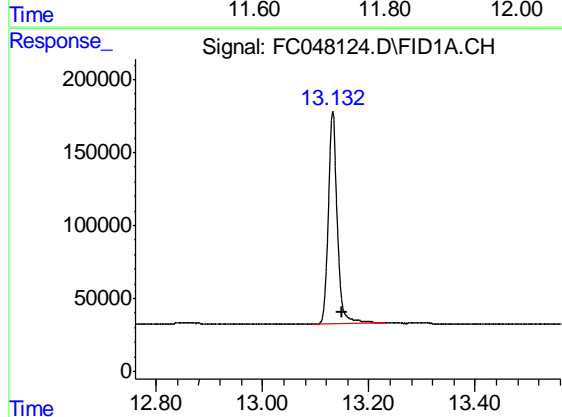




#9 ortho-Terphenyl (SURR)

R.T.: 11.720 min
Delta R.T.: -0.019 min
Response: 2117898
Conc: 17.66 ug/ml

Instrument :
FID_C
ClientSampleId :
TP-8-S1DL



#12 1-chlorooctadecane (SURR)

R.T.: 13.132 min
Delta R.T.: -0.018 min
Response: 1690654
Conc: 17.26 ug/ml