

Data Path : Z:\pestpcbsrv\HPCHEM1\FID C\Data\FC062718AL\
Data File : FC035035.D
Signal(s) : FID1A.CH
Acq On : 28 Jun 2018 8:37
Operator : UA/AJ
Sample : J3629-09DL2 50X
Misc :
ALS Vial : 21 Sample Multiplier: 1

Integration File: autoint1.e
Quant Time: Jun 28 12:38:56 2018
Quant Method : Z:\PESTPCBSRV\HPCHEM1\FID_C\Method\Alaphatic EPH 062518.M
Quant Title : GC Extractables
QLast Update : Mon Jun 25 14:27:40 2018
Response via : Initial Calibration
Integrator: ChemStation 6890 Scale Mode: Large solvent peaks clipped

Volume Inj. : 1 ul
Signal Phase : Rxi-lms
Signal Info : 20M x 0.18mm x 0.18um

Compound	R.T.	Response	Conc Units
----------	------	----------	------------

System Monitoring Compounds

Target Compounds

18) T	n-Dotriacontane (C32)	18.438	47221	0.532 ug/ml
-------	-----------------------	--------	-------	-------------

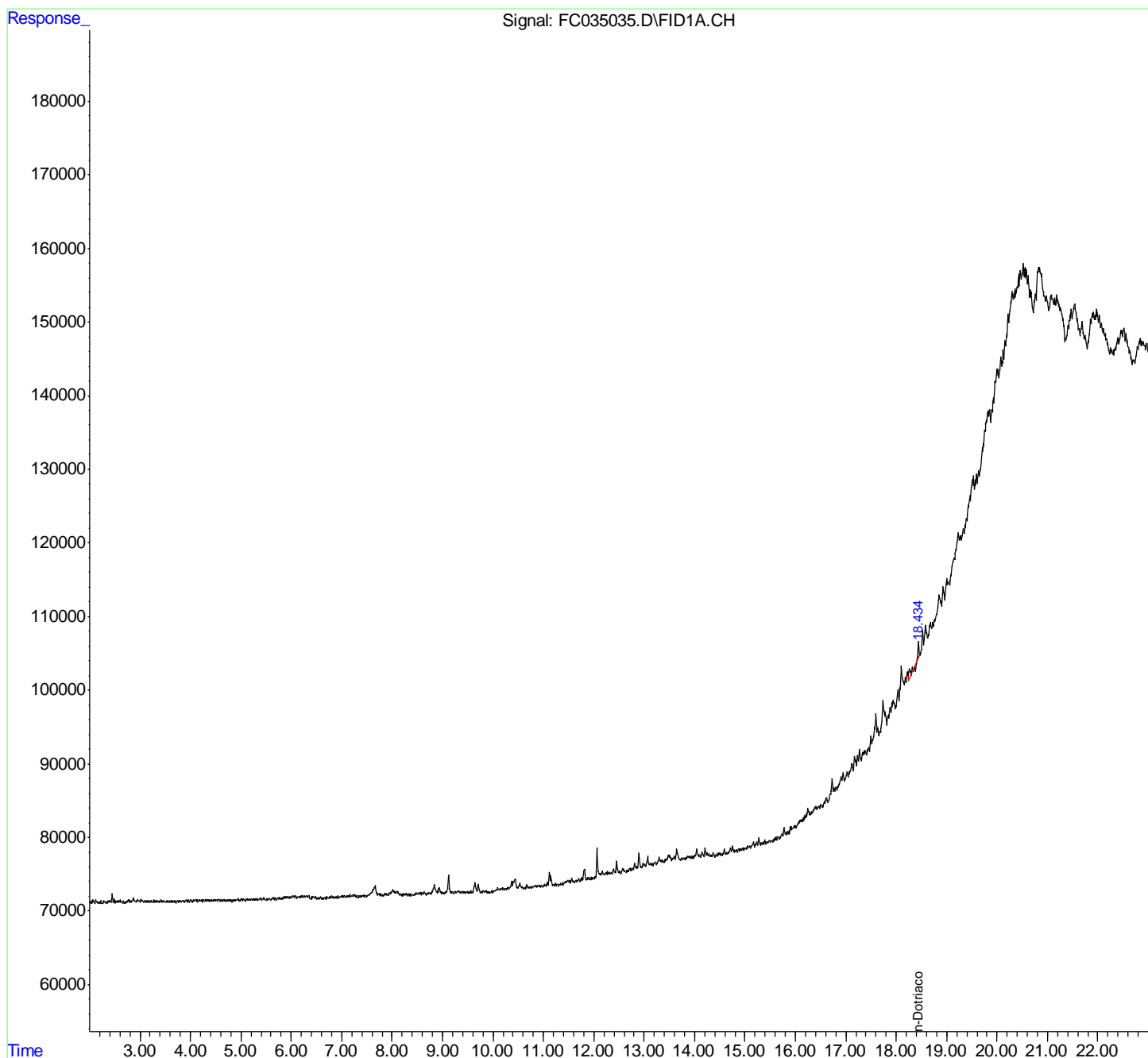
(f)=RT Delta > 1/2 Window

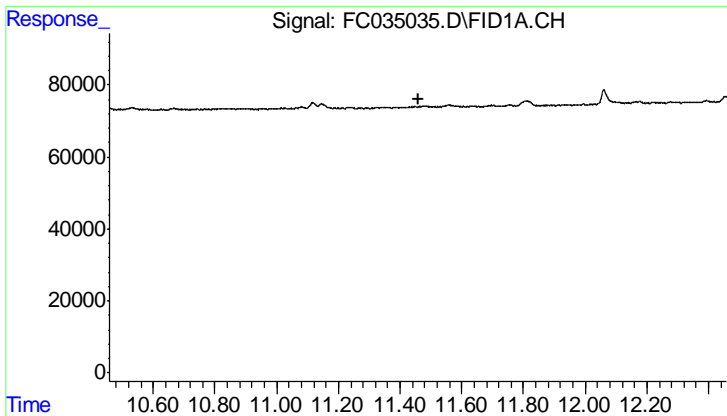
(m)=manual int.

Data Path : Z:\pestpcbsrv\HPCHEM1\FID C\Data\FC062718AL\
 Data File : FC035035.D
 Signal(s) : FID1A.CH
 Acq On : 28 Jun 2018 8:37
 Operator : UA/AJ
 Sample : J3629-09DL2 50X
 Misc :
 ALS Vial : 21 Sample Multiplier: 1

Integration File: autoint1.e
 Quant Time: Jun 28 12:38:56 2018
 Quant Method : Z:\PESTPCBSRV\HPCHEM1\FID_C\Method\Alaphatic EPH 062518.M
 Quant Title : GC Extractables
 QLast Update : Mon Jun 25 14:27:40 2018
 Response via : Initial Calibration
 Integrator: ChemStation 6890 Scale Mode: Large solvent peaks clipped

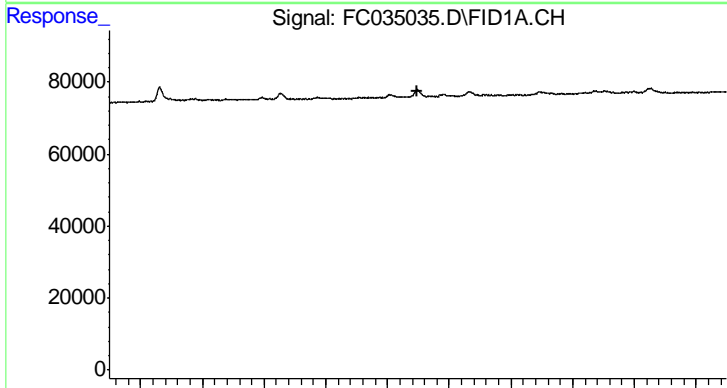
Volume Inj. : 1 ul
 Signal Phase : Rxi-lms
 Signal Info : 20M x 0.18mm x 0.18um





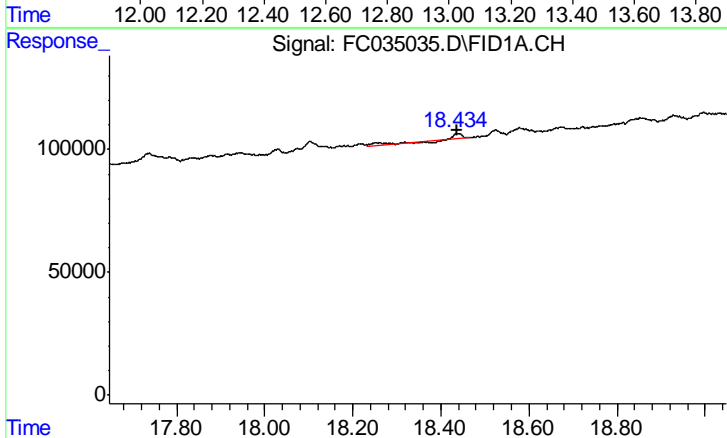
#9 ortho-Terphenyl (SURR)

R.T.: 0.000 min
 Exp R.T.: 11.458 min
 Response: 0
 Conc: N.D.



#12 1-chlorooctadecane (SURR)

R.T.: 0.000 min
 Exp R.T.: 12.898 min
 Response: 0
 Conc: N.D.



#18 n-Dotriacontane (C32)

R.T.: 18.438 min
 Delta R.T.: 0.003 min
 Response: 47221
 Conc: 0.53 ug/ml