

Data Path : Z:\pestpcbsrv\HPCHEM1\FID_C\Data\FC062723AL\
 Data File : FC064018.D
 Signal(s) : FID1A.ch
 Acq On : 27 Jun 2023 20:58
 Operator : YP/AJ
 Sample : 03415-01
 Misc :
 ALS Vial : 84 Sample Multiplier: 1

Instrument :
 FID_C
 ClientSampleId :

Integration File: autoint1.e
 Quant Time: Jun 28 00:49:58 2023
 Quant Method : Z:\pestpcbsrv\HPCHEM1\FID_C\Method\Aliphatic EPH 062423.M
 Quant Title : GC Extractables
 QLast Update : Sun Jun 25 04:03:48 2023
 Response via : Initial Calibration
 Integrator: ChemStation

Volume Inj. : 1 ul
 Signal Phase : Rxi-1ms
 Signal Info : 20M x 0.18mm x 0.18um

Compound	R.T.	Response	Conc Units

System Monitoring Compounds			
9) S ortho-Terphenyl (SURR)	11.529	6935361	35.719 ug/ml
Spiked Amount	50.000	Recovery	= 71.44%
12) S 1-chlorooctadecane (S...	12.964	5509309	39.598 ug/ml
Spiked Amount	50.000	Recovery	= 79.20%
Target Compounds			
10) T n-Eicosane (C20)	12.581f	209590	1.284 ug/ml
14) T n-Tetracosane (C24)	14.800	176271	1.118 ug/ml
17) T n-Tricontane (C30)	17.659	70883	0.454 ug/ml
18) T n-Dotriacontane (C32)	18.488	127507	0.807 ug/ml
19) T n-Tetratriacontane (C34)	19.287	94225	0.612 ug/ml

(f)=RT Delta > 1/2 Window

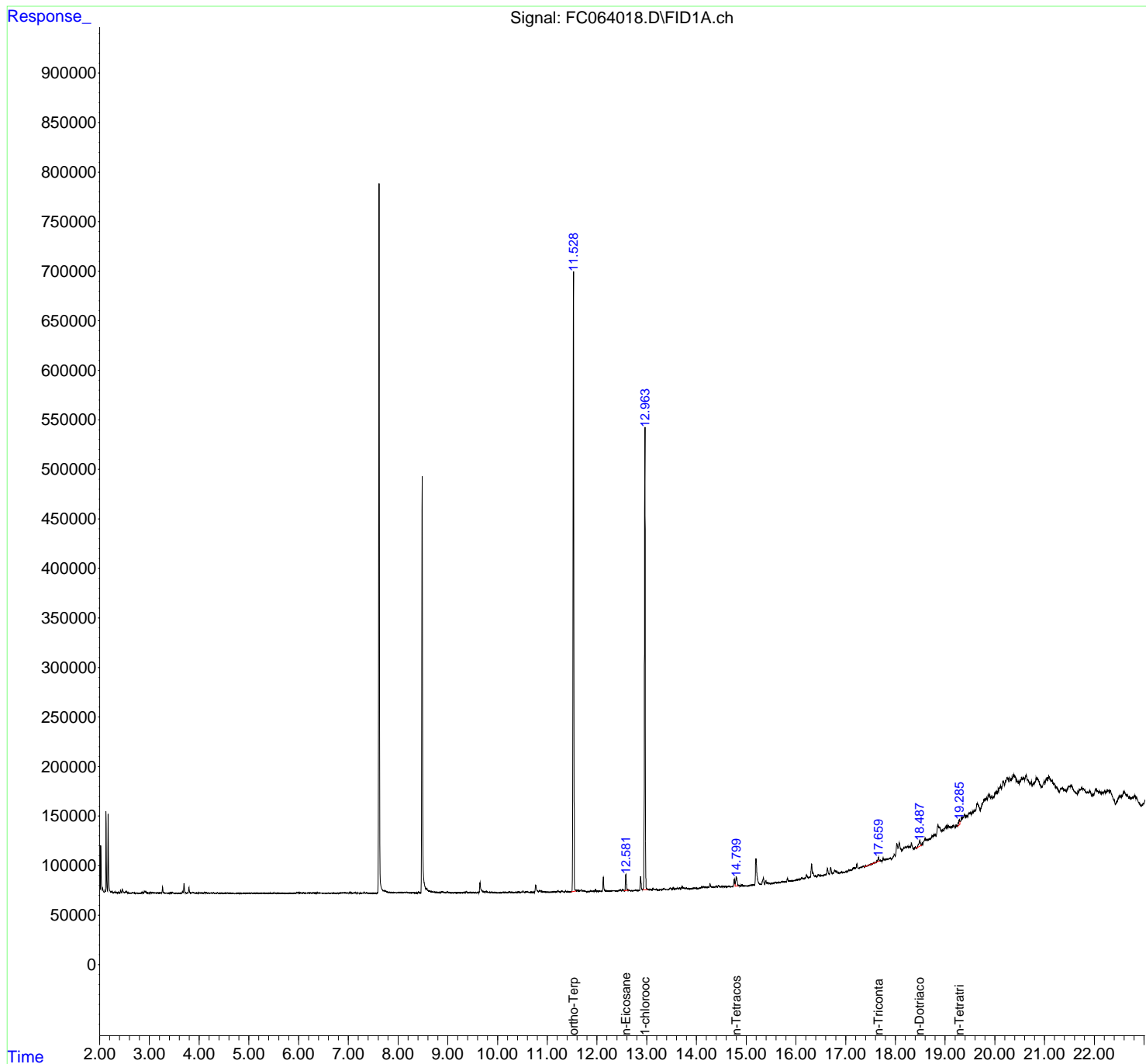
(m)=manual int.

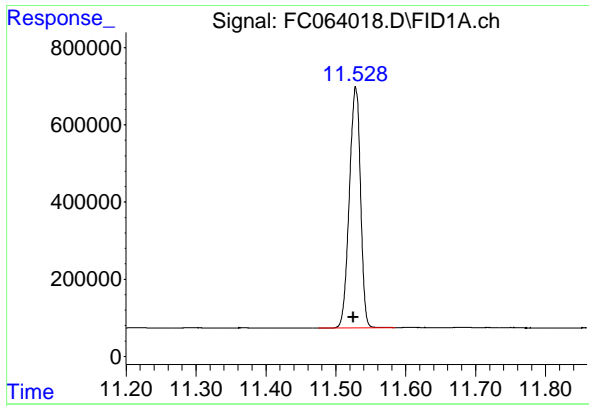
Data Path : Z:\pestpcbsrv\HPCHEM1\FID_C\Data\FC062723AL\
 Data File : FC064018.D
 Signal(s) : FID1A.ch
 Acq On : 27 Jun 2023 20:58
 Operator : YP/AJ
 Sample : 03415-01
 Misc :
 ALS Vial : 84 Sample Multiplier: 1

Instrument :
 FID_C
 ClientSampleId :

Integration File: autoint1.e
 Quant Time: Jun 28 00:49:58 2023
 Quant Method : Z:\pestpcbsrv\HPCHEM1\FID_C\Method\Aliphatic EPH 062423.M
 Quant Title : GC Extractables
 QLast Update : Sun Jun 25 04:03:48 2023
 Response via : Initial Calibration
 Integrator: ChemStation

Volume Inj. : 1 ul
 Signal Phase : Rxi-1ms
 Signal Info : 20M x 0.18mm x 0.18um

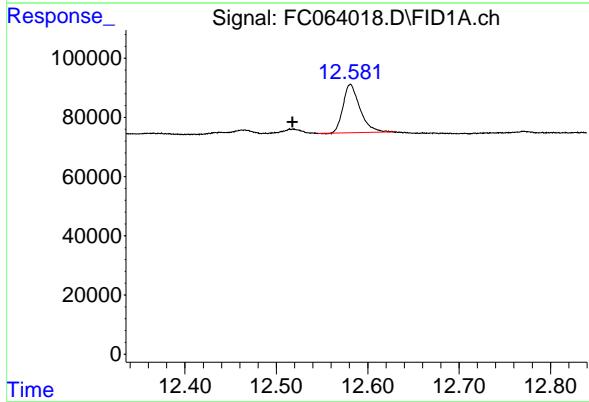




#9 ortho-Terphenyl (SURR)

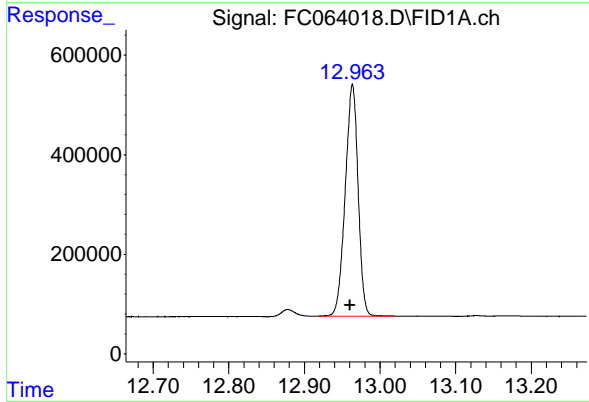
R.T.: 11.529 min
 Delta R.T.: 0.003 min
 Response: 6935361
 Conc: 35.72 ug/ml

Instrument : FID_C
 ClientSampleId :



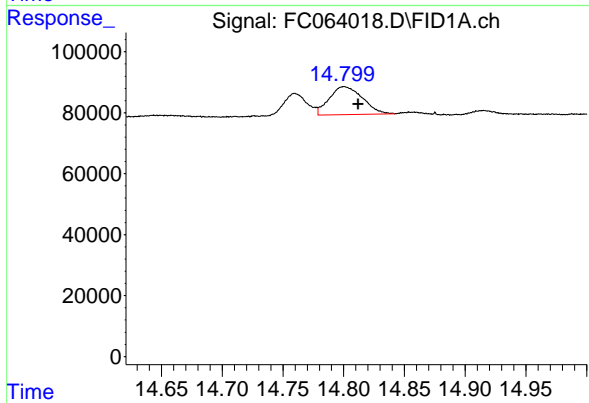
#10 n-Eicosane (C20)

R.T.: 12.581 min
 Delta R.T.: 0.063 min
 Response: 209590
 Conc: 1.28 ug/ml



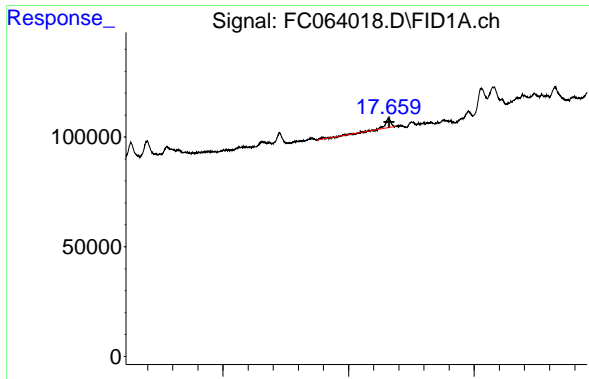
#12 1-chlorooctadecane (SURR)

R.T.: 12.964 min
 Delta R.T.: 0.003 min
 Response: 5509309
 Conc: 39.60 ug/ml



#14 n-Tetracosane (C24)

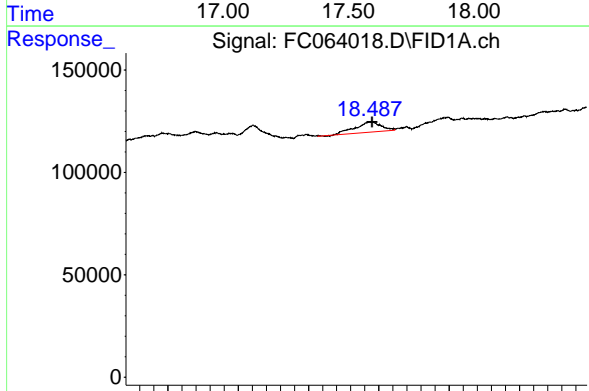
R.T.: 14.800 min
 Delta R.T.: -0.012 min
 Response: 176271
 Conc: 1.12 ug/ml



#17 n-Tricontane (C30)

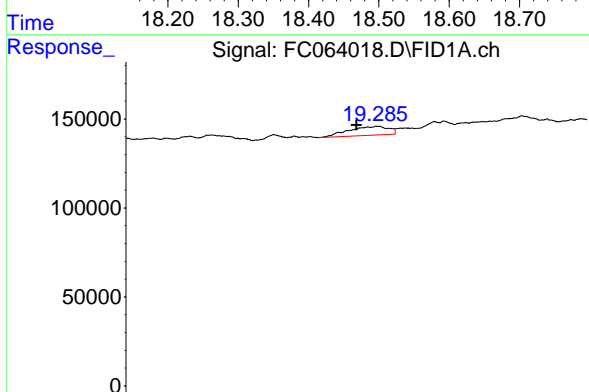
R.T.: 17.659 min
 Delta R.T.: -0.003 min
 Response: 70883
 Conc: 0.45 ug/ml

Instrument :
 FID_C
 ClientSampleId :



#18 n-Dotriacontane (C32)

R.T.: 18.488 min
 Delta R.T.: -0.003 min
 Response: 127507
 Conc: 0.81 ug/ml



#19 n-Tetratriacontane (C34)

R.T.: 19.287 min
 Delta R.T.: 0.014 min
 Response: 94225
 Conc: 0.61 ug/ml