

Data Path : Z:\pestpcbsrv\HPCHEM1\FID\_C\Data\FC062821AL\  
 Data File : FC054467.D  
 Signal(s) : FID1A.CH  
 Acq On : 28 Jun 2021 12:14  
 Operator : DD\AJ  
 Sample : M2842-01  
 Misc :  
 ALS Vial : 5 Sample Multiplier: 1

Integration File: autoint1.e  
 Quant Time: Jun 29 04:53:25 2021  
 Quant Method : Z:\pestpcbsrv\HPCHEM1\FID\_C\Method\Alaphatic EPH 062521.M  
 Quant Title : GC Extractables  
 QLast Update : Sat Jun 26 02:10:35 2021  
 Response via : Initial Calibration  
 Integrator: ChemStation 6890 Scale Mode: Large solvent peaks clipped

Volume Inj. : 1 ul  
 Signal Phase : Rxi-1ms  
 Signal Info : 20M x 0.18mm x 0.18um

Compound	R.T.	Response	Conc Units
System Monitoring Compounds			
9) S ortho-Terphenyl (SURR)	11.339	6094424	43.049 ug/ml
Spiked Amount	50.000	Recovery	= 86.10%
12) S 1-chlorooctadecane (S...	12.794	43939067	394.160 ug/ml
Spiked Amount	50.000	Recovery	= 788.32%
Target Compounds			
5) T A~2-methylnaphthalene...	6.828	233252	1.767 ug/ml
6) T n-Tetradecane (C14)	7.999	460659	3.781 ug/ml
7) T n-Hexadecane (C16)	9.594	1051914	8.445 ug/ml
8) T n-Octadecane (C18)	11.032	1065912	8.253 ug/ml
10) T n-Eicosane (C20)	12.338	1026518	7.889 ug/ml
11) T n-Heneicosane (C21)	12.955	852787	6.423 ug/ml
13) T n-Docosane (C22)	13.535	590522	4.457 ug/ml
14) T n-Tetracosane (C24)	14.629	2089419	15.435 ug/ml
15) T n-Hexacosane (C26)	15.655	486689	3.592 ug/ml
16) T n-Octacosane (C28)	16.606	620198	4.519 ug/ml
17) T n-Tricontane (C30)	17.488	774576	5.592 ug/ml
18) T n-Dotriacontane (C32)	18.324	1065554	7.788 ug/ml
19) T n-Tetratriacontane (C34)	19.112	820616	6.073 ug/ml
20) T n-Hexatriacontane (C36)	19.850	60851	0.493 ug/ml
21) T n-Octatriacontane (C38)	20.558	1532357	13.547 ug/ml
22) T n-Tetracontane (C40)	21.392	668907	5.918 ug/ml

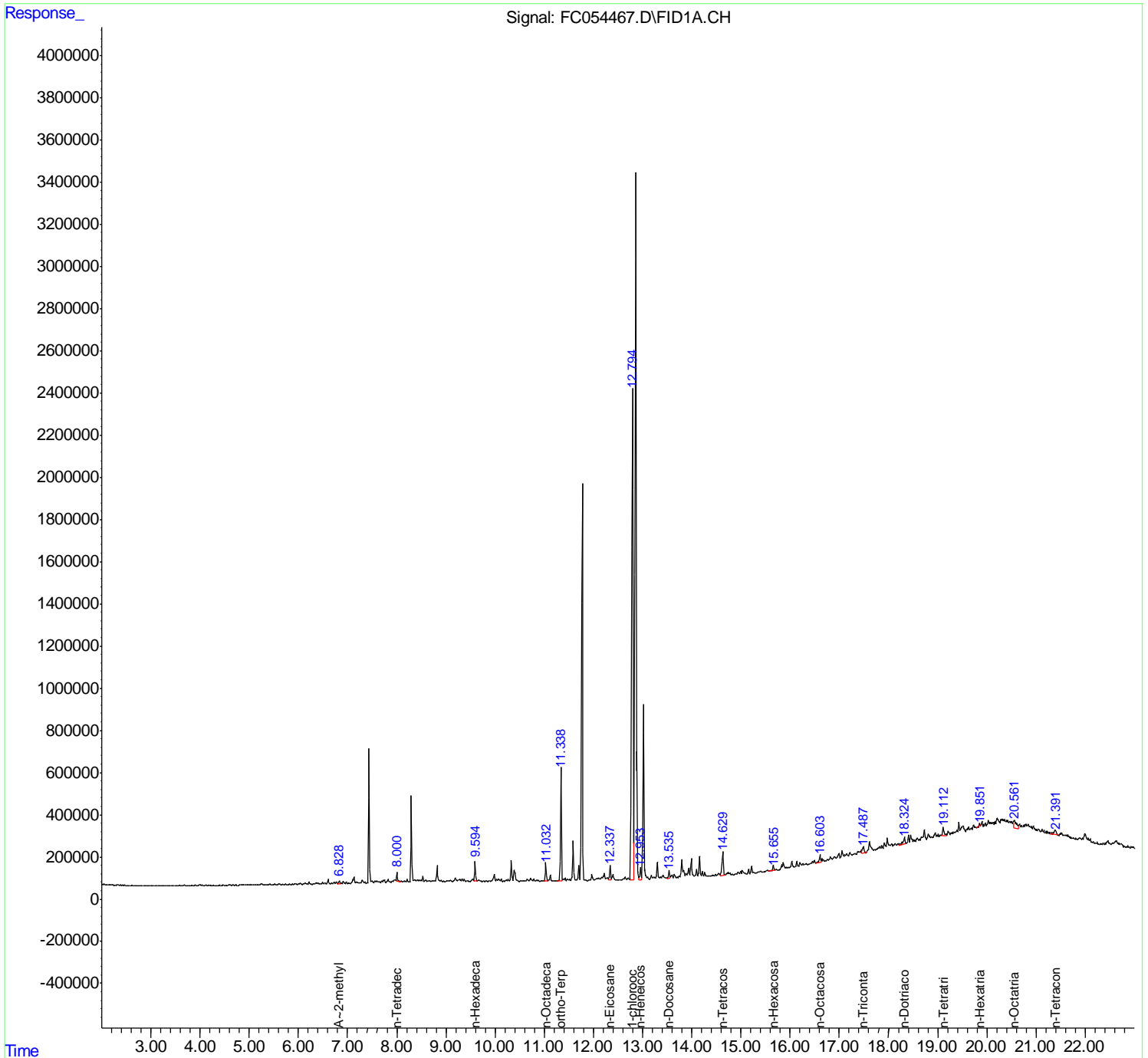
(f)=RT Delta > 1/2 Window

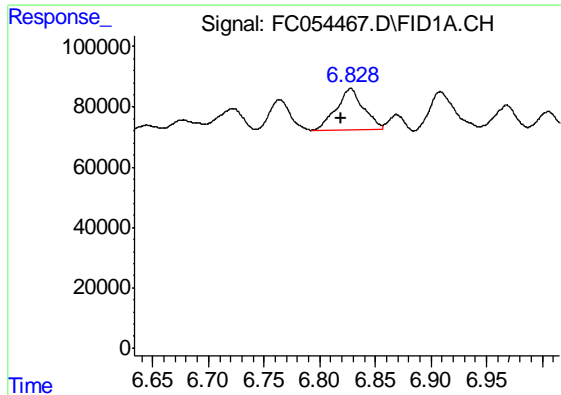
(m)=manual int.

Data Path : Z:\pestpcbsrv\HPCHEM1\FID\_C\Data\FC062821AL\  
 Data File : FC054467.D  
 Signal(s) : FID1A.CH  
 Acq On : 28 Jun 2021 12:14  
 Operator : DD\AJ  
 Sample : M2842-01  
 Misc :  
 ALS Vial : 5 Sample Multiplier: 1

Integration File: autoint1.e  
 Quant Time: Jun 29 04:53:25 2021  
 Quant Method : Z:\pestpcbsrv\HPCHEM1\FID\_C\Method\Alaphatic EPH 062521.M  
 Quant Title : GC Extractables  
 QLast Update : Sat Jun 26 02:10:35 2021  
 Response via : Initial Calibration  
 Integrator: ChemStation 6890 Scale Mode: Large solvent peaks clipped

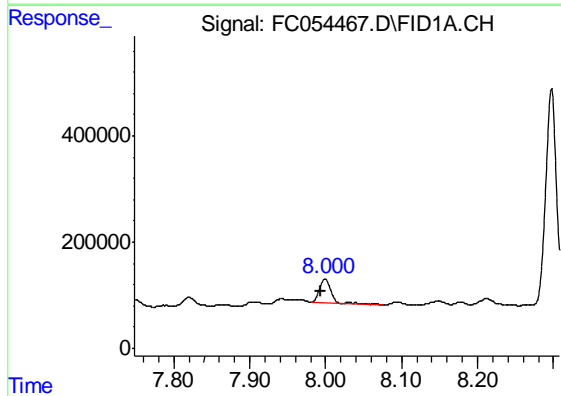
Volume Inj. : 1 ul  
 Signal Phase : Rxi-1ms  
 Signal Info : 20M x 0.18mm x 0.18um





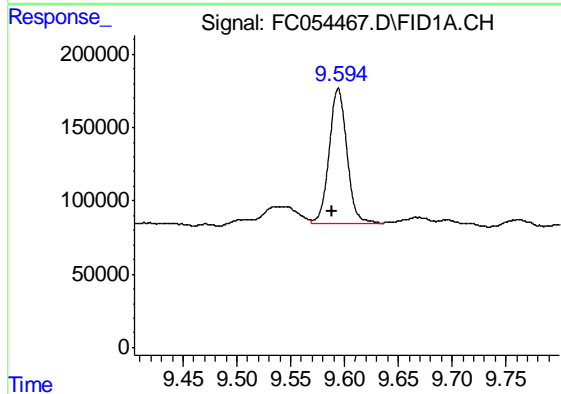
#5 A~2-methylnaphthalene (C12.89)

R.T.: 6.828 min  
Delta R.T.: 0.008 min  
Response: 233252  
Conc: 1.77 ug/ml



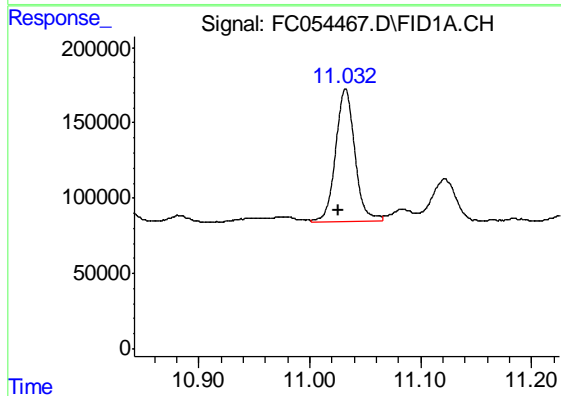
#6 n-Tetradecane (C14)

R.T.: 7.999 min  
Delta R.T.: 0.006 min  
Response: 460659  
Conc: 3.78 ug/ml



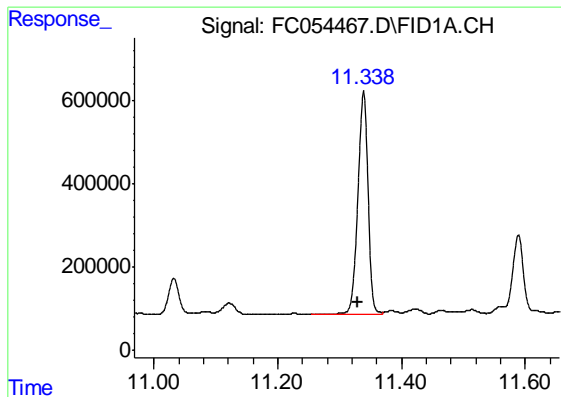
#7 n-Hexadecane (C16)

R.T.: 9.594 min  
Delta R.T.: 0.006 min  
Response: 1051914  
Conc: 8.44 ug/ml



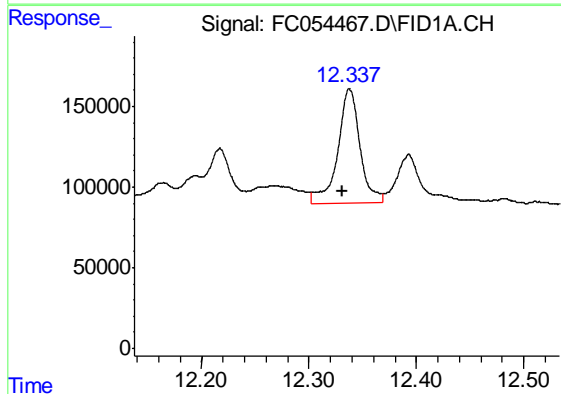
#8 n-Octadecane (C18)

R.T.: 11.032 min  
Delta R.T.: 0.007 min  
Response: 1065912  
Conc: 8.25 ug/ml



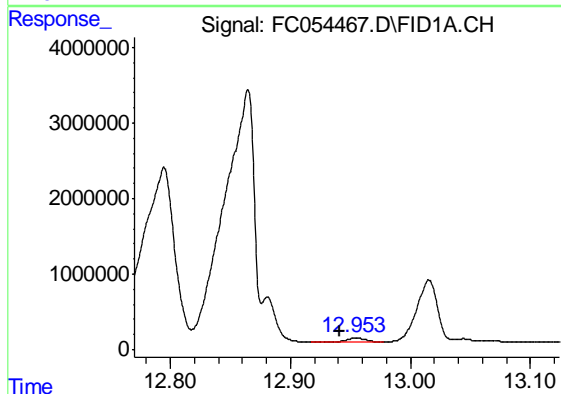
#9 ortho-Terphenyl (SURR)

R.T.: 11.339 min  
 Delta R.T.: 0.010 min  
 Response: 6094424  
 Conc: 43.05 ug/ml



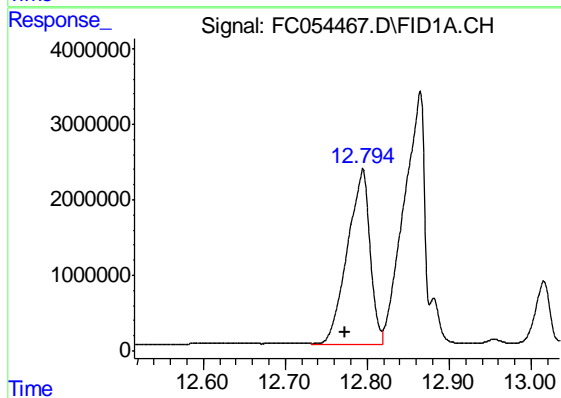
#10 n-Eicosane (C20)

R.T.: 12.338 min  
 Delta R.T.: 0.006 min  
 Response: 1026518  
 Conc: 7.89 ug/ml



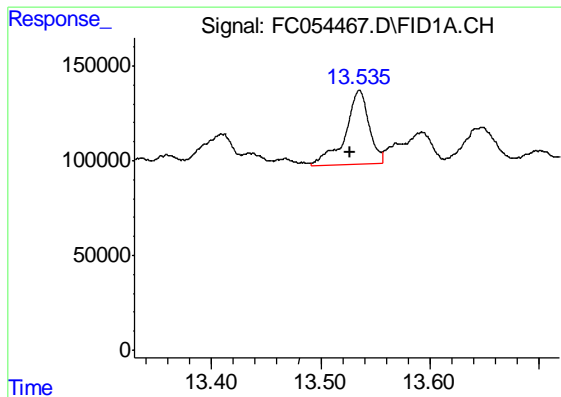
#11 n-Heneicosane (C21)

R.T.: 12.955 min  
 Delta R.T.: 0.013 min  
 Response: 852787  
 Conc: 6.42 ug/ml



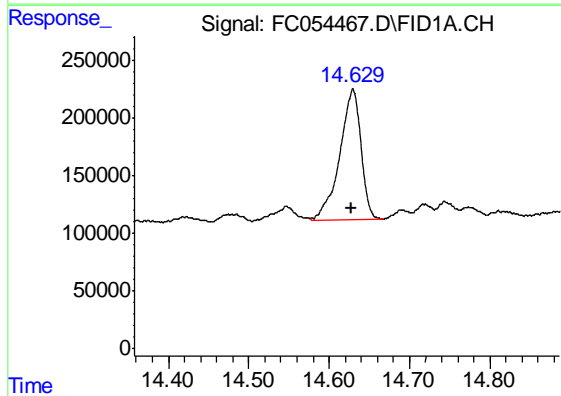
#12 1-chlorooctadecane (SURR)

R.T.: 12.794 min  
 Delta R.T.: 0.021 min  
 Response: 43939067  
 Conc: 394.16 ug/ml



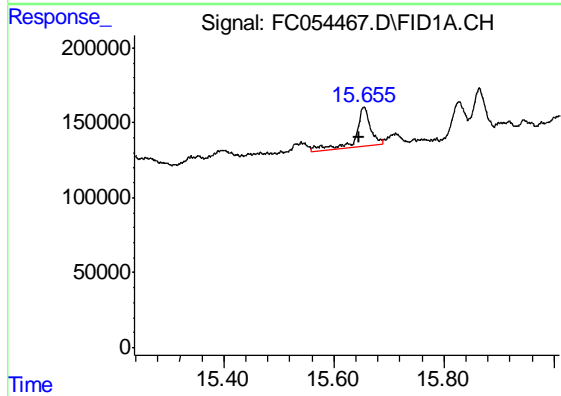
#13 n-Docosane (C22)

R.T.: 13.535 min  
 Delta R.T.: 0.008 min  
 Response: 590522  
 Conc: 4.46 ug/ml



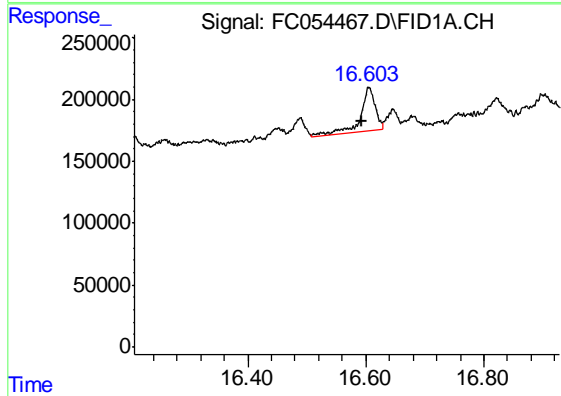
#14 n-Tetracosane (C24)

R.T.: 14.629 min  
 Delta R.T.: 0.002 min  
 Response: 2089419  
 Conc: 15.43 ug/ml



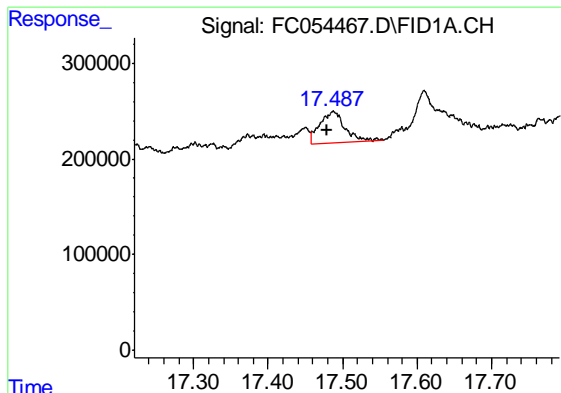
#15 n-Hexacosane (C26)

R.T.: 15.655 min  
 Delta R.T.: 0.009 min  
 Response: 486689  
 Conc: 3.59 ug/ml



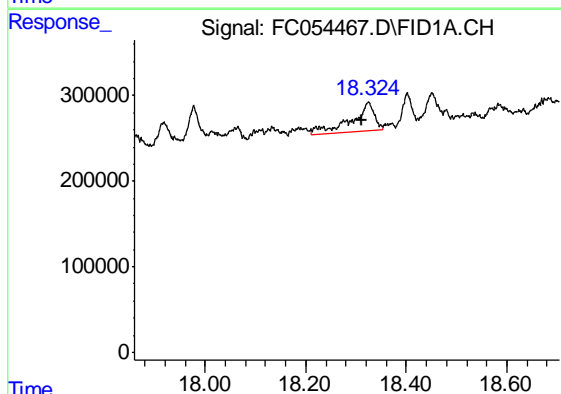
#16 n-Octacosane (C28)

R.T.: 16.606 min  
 Delta R.T.: 0.012 min  
 Response: 620198  
 Conc: 4.52 ug/ml



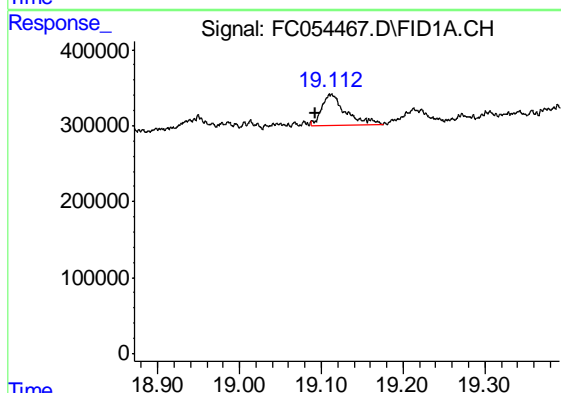
#17 n-Tricontane (C30)

R.T.: 17.488 min  
Delta R.T.: 0.009 min  
Response: 774576  
Conc: 5.59 ug/ml



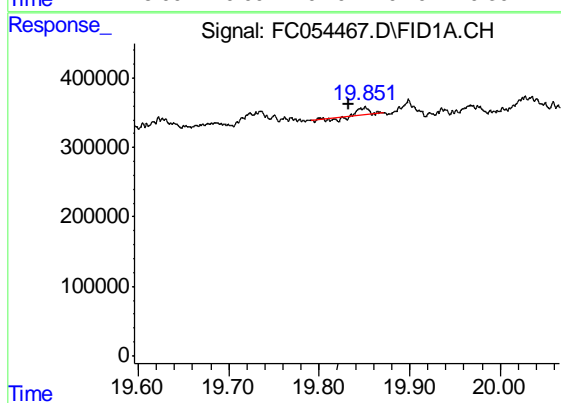
#18 n-Dotriacontane (C32)

R.T.: 18.324 min  
Delta R.T.: 0.013 min  
Response: 1065554  
Conc: 7.79 ug/ml



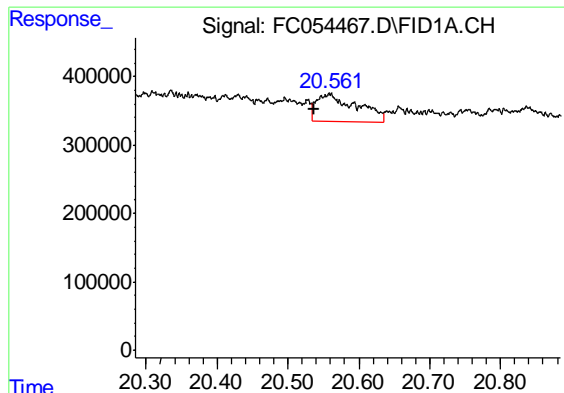
#19 n-Tetratriacontane (C34)

R.T.: 19.112 min  
Delta R.T.: 0.019 min  
Response: 820616  
Conc: 6.07 ug/ml



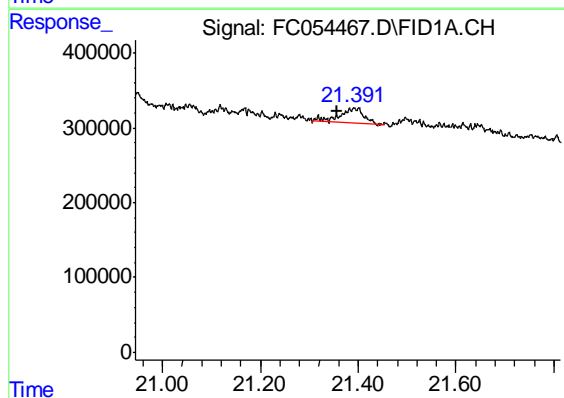
#20 n-Hexatriacontane (C36)

R.T.: 19.850 min  
Delta R.T.: 0.017 min  
Response: 60851  
Conc: 0.49 ug/ml



#21 n-Octatriacontane (C38)

R.T.: 20.558 min  
Delta R.T.: 0.021 min  
Response: 1532357  
Conc: 13.55 ug/ml



#22 n-Tetracontane (C40)

R.T.: 21.392 min  
Delta R.T.: 0.036 min  
Response: 668907  
Conc: 5.92 ug/ml