

Data Path : Z:\pestpcbsrv\HPCHEM1\FID_C\Data\FC062822AL\
 Data File : FC060496.D
 Signal(s) : FID1A.ch
 Acq On : 28 Jun 2022 21:43
 Operator : YP/AJ
 Sample : PB143205BL
 Misc :
 ALS Vial : 13 Sample Multiplier: 1

Instrument :
 FID_C
 ClientSampleId :
 PB143205BL

Integration File: autoint1.e
 Quant Time: Jun 29 03:16:49 2022
 Quant Method : Z:\pestpcbsrv\HPCHEM1\FID_C\Method\Aliphatic EPH 062422.M
 Quant Title : GC Extractables
 QLast Update : Sat Jun 25 04:15:44 2022
 Response via : Initial Calibration
 Integrator: ChemStation

Volume Inj. : 1 ul
 Signal Phase : Rxi-1ms
 Signal Info : 20M x 0.18mm x 0.18um

Compound	R.T.	Response	Conc Units

System Monitoring Compounds			
12) S 1-chlorooctadecane (S...	12.005	3685340	25.003 ug/ml
Spiked Amount	50.000	Recovery	= 50.01%

Target Compounds

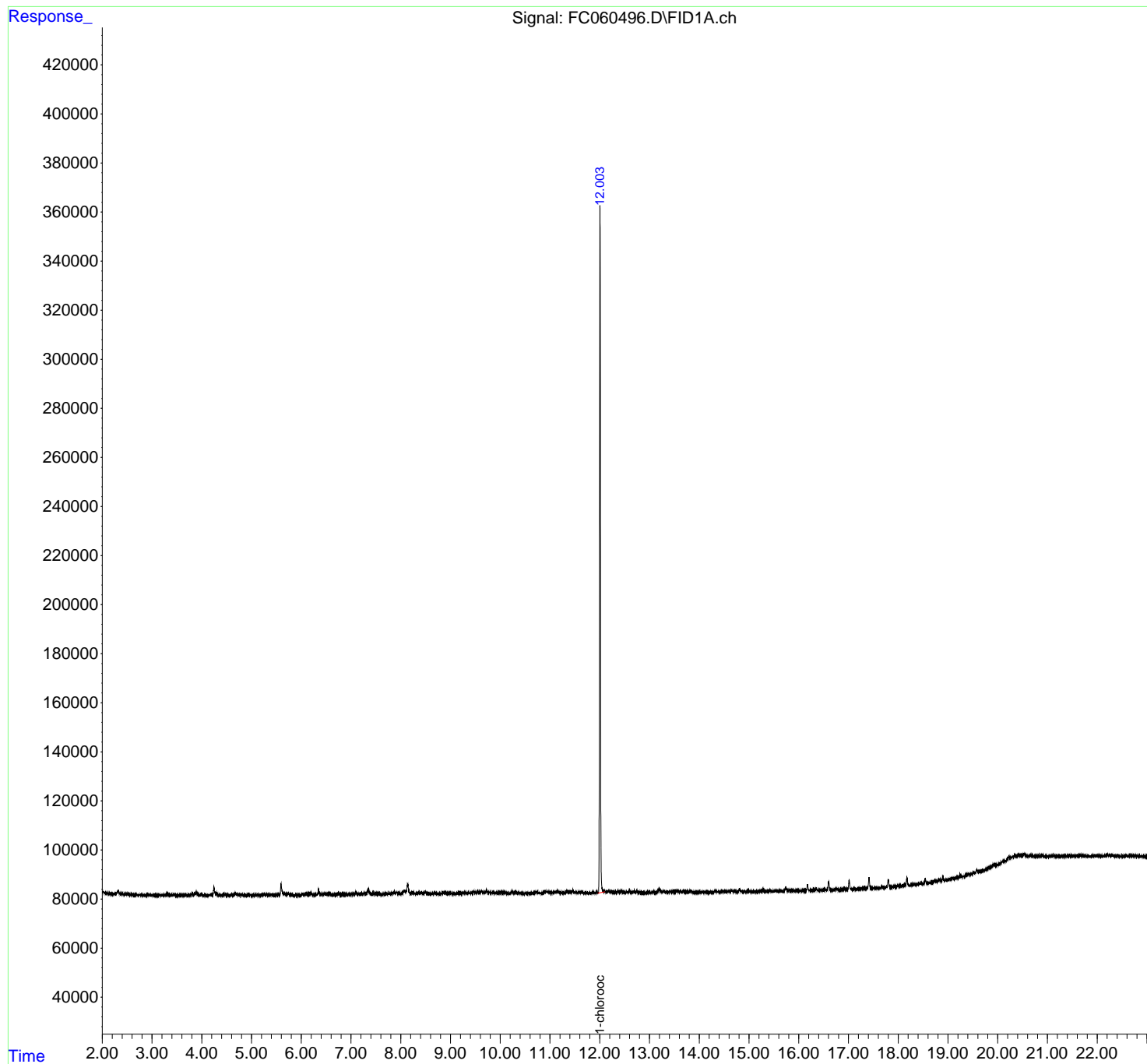
(f)=RT Delta > 1/2 Window (m)=manual int.

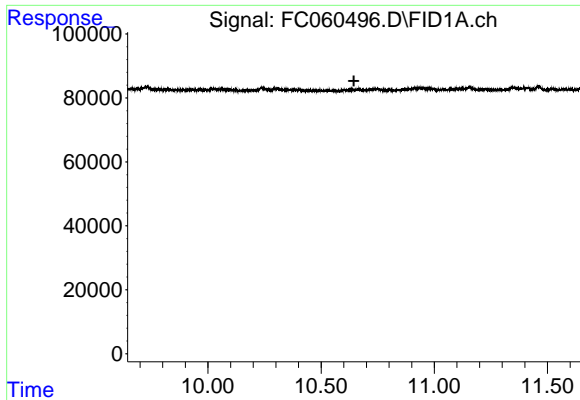
Data Path : Z:\pestpcbsrv\HPCHEM1\FID_C\Data\FC062822AL\
Data File : FC060496.D
Signal(s) : FID1A.ch
Acq On : 28 Jun 2022 21:43
Operator : YP/AJ
Sample : PB143205BL
Misc :
ALS Vial : 13 Sample Multiplier: 1

Instrument :
FID_C
ClientSampleId :
PB143205BL

Integration File: autoint1.e
Quant Time: Jun 29 03:16:49 2022
Quant Method : Z:\pestpcbsrv\HPCHEM1\FID_C\Method\Aliphatic EPH 062422.M
Quant Title : GC Extractables
QLast Update : Sat Jun 25 04:15:44 2022
Response via : Initial Calibration
Integrator: ChemStation

Volume Inj. : 1 ul
Signal Phase : Rxi-1ms
Signal Info : 20M x 0.18mm x 0.18um

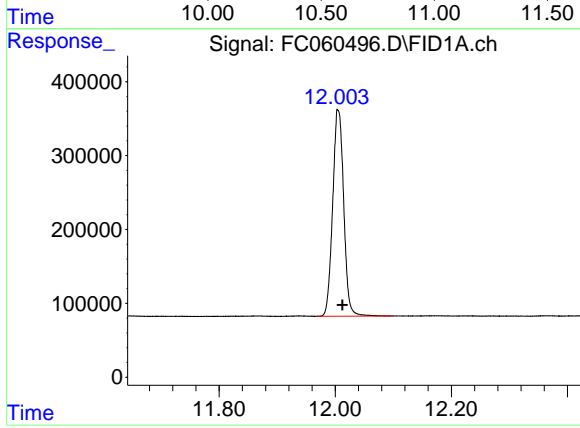




#9 ortho-Terphenyl (SURR)

R.T.: 0.000 min
 Exp R.T.: 10.645 min
 Response: 0
 Conc: N.D.

Instrument : FID_C
 ClientSampleId : PB143205BL



#12 1-chlorooctadecane (SURR)

R.T.: 12.005 min
 Delta R.T.: -0.007 min
 Response: 3685340
 Conc: 25.00 ug/ml