

Data Path : Z:\pestpcbsrv\HPCHEM1\FID_C\Data\FC070125AL\
 Data File : FC069344.D
 Signal(s) : FID1A.ch
 Acq On : 01 Jul 2025 13:51
 Operator : YP/AJ
 Sample : PB168673BL
 Misc :
 ALS Vial : 11 Sample Multiplier: 1

Instrument :
 FID_C
ClientSampleId :
 PB168673BL

Integration File: autoint1.e
 Quant Time: Jul 02 00:32:04 2025
 Quant Method : Z:\pestpcbsrv\HPCHEM1\FID_C\Method\Aliphatic EPH 061825.M
 Quant Title : GC Extractables
 QLast Update : Wed Jun 18 14:24:27 2025
 Response via : Initial Calibration
 Integrator: ChemStation

Volume Inj. : 1 ul
 Signal Phase : Rxi-1ms
 Signal Info : 20M x 0.18mm x 0.18um

Compound	R.T.	Response	Conc Units
System Monitoring Compounds			
9) S ortho-Terphenyl (SURR)	11.680	6523006	37.758 ug/ml
Spiked Amount	50.000	Recovery	= 75.52%
12) S 1-chlorooctadecane (S...	13.116	5120500	39.195 ug/ml
Spiked Amount	50.000	Recovery	= 78.39%

Target Compounds

(f)=RT Delta > 1/2 Window

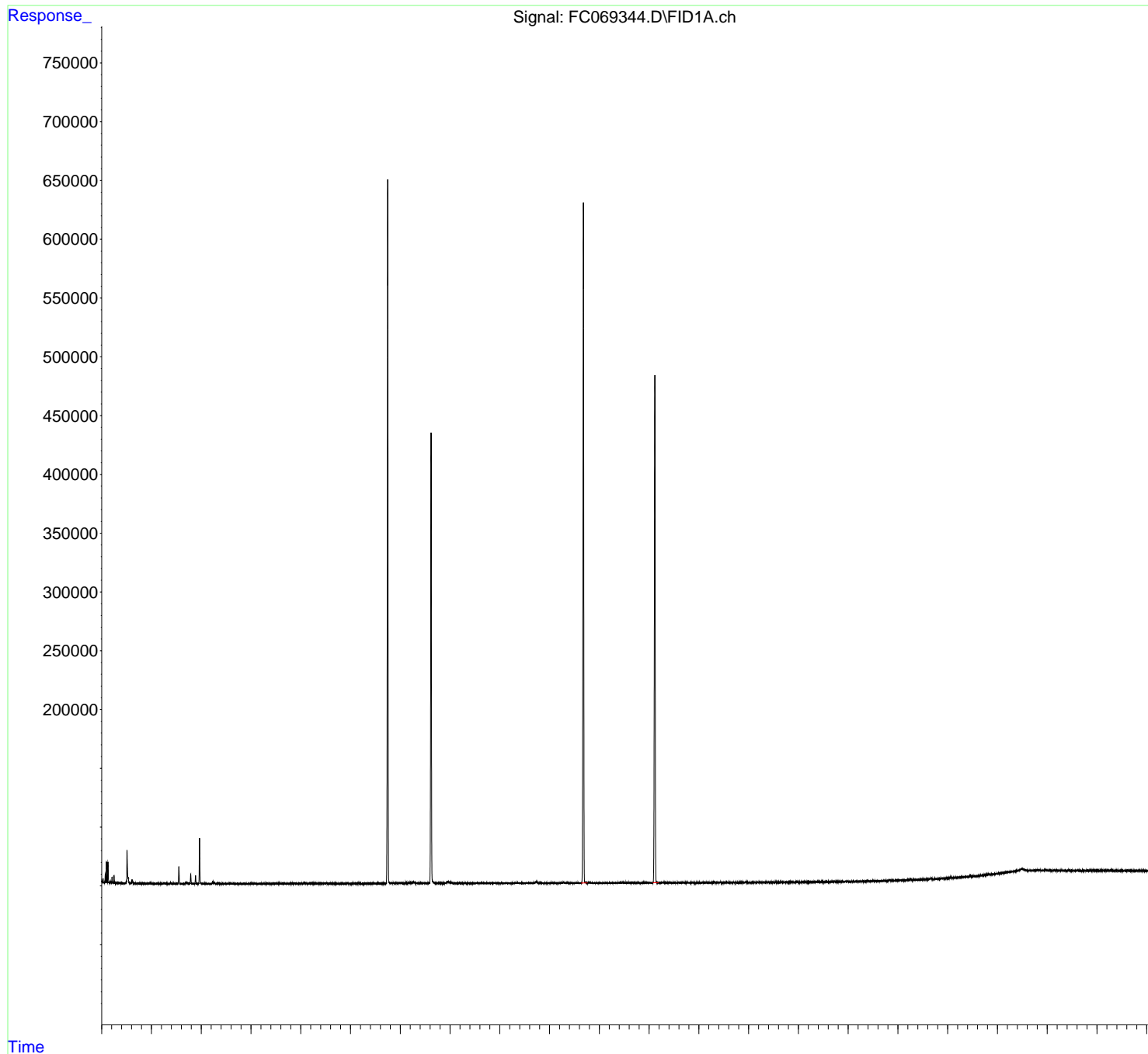
(m)=manual int.

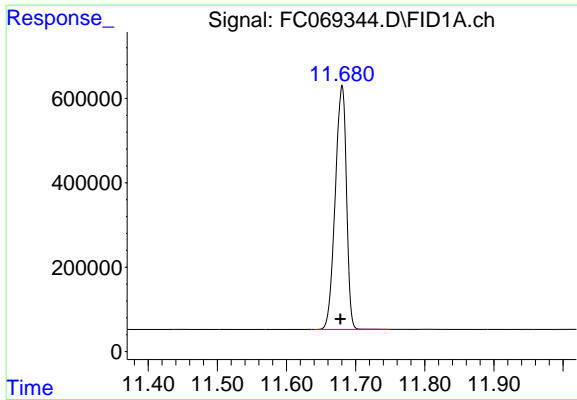
Data Path : Z:\pestpcbsrv\HPCHEM1\FID_C\Data\FC070125AL\
 Data File : FC069344.D
 Signal(s) : FID1A.ch
 Acq On : 01 Jul 2025 13:51
 Operator : YP/AJ
 Sample : PB168673BL
 Misc :
 ALS Vial : 11 Sample Multiplier: 1

Instrument :
 FID_C
 ClientSampleId :
 PB168673BL

Integration File: autoint1.e
 Quant Time: Jul 02 00:32:04 2025
 Quant Method : Z:\pestpcbsrv\HPCHEM1\FID_C\Method\Aliphatic EPH 061825.M
 Quant Title : GC Extractables
 QLast Update : Wed Jun 18 14:24:27 2025
 Response via : Initial Calibration
 Integrator: ChemStation

Volume Inj. : 1 ul
 Signal Phase : Rxi-1ms
 Signal Info : 20M x 0.18mm x 0.18um

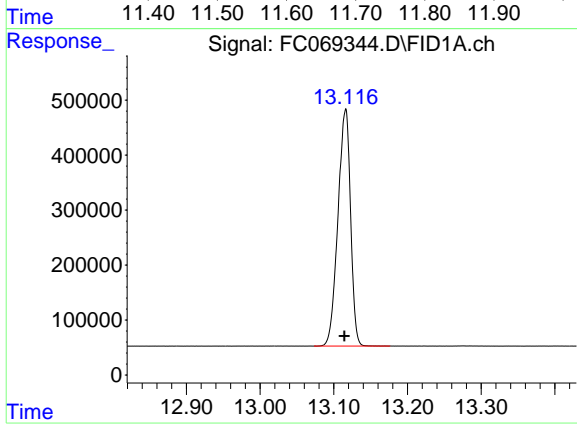




#9 ortho-Terphenyl (SURR)

R.T.: 11.680 min
Delta R.T.: 0.002 min
Response: 6523006
Conc: 37.76 ug/ml

Instrument :
FID_C
ClientSampleId :
PB168673BL



#12 1-chlorooctadecane (SURR)

R.T.: 13.116 min
Delta R.T.: 0.001 min
Response: 5120500
Conc: 39.19 ug/ml